

Product datasheet for RC220039

COLEC10 (NM_006438) Human Tagged ORF Clone

Product data:

Product Type:	Expression Plasmids
Product Name:	COLEC10 (NM_006438) Human Tagged ORF Clone
Tag:	Myc-DDK
Symbol:	COLEC10
Synonyms:	3MC3; CL-10; CL-34; CLL1
Mammalian Cell Selection:	Neomycin
Vector:	pCMV6-Entry (PS100001)
E. coli Selection:	Kanamycin (25 ug/mL)
ORF Nucleotide Sequence:	>RC220039 ORF sequence Red=Cloning site Blue=ORF Green=Tags(s)

TTTTGTAATACGACTCACTATAGGGCGGCCGGAATTCGTCGACTGGATCCGGTACCGAGGAGATCTGCC
GCC**CGGATCGCC**

ATGAATGGCTTTGCATCCTTGCTTCGAAGAAACCAATTTATCCTCCTGGTACTATTTCTTTTGCAAATTC
AGAGTCTGGGTCTGGATATTGATAGCCGTCCTACCGCTGAAGTCTGTGCCACACACAATTTACCAGG
ACCCAAAGGAGATGATGGTGAAAAGGAGATCCAGGAGAAGAGGGAAAGCATGGCAAAGTGGGACGCATG
GGGCCGAAAGGAATTAAGGAGAACTGGGTGATATGGGAGATCAGGGCAATATTGGCAAGACTGGGCCCA
TTGGGAAGAAGGGTGACAAAGGGGAAAAAGGTTTGCTTGAATACCTGGAGAAAAAGGCAAAGCAGGTAC
TGTCTGTGATTGTGGAAGATACCGGAAATTTGTTGGACAACCTGGATATTAGTATTGCTCGGCTCAAGACA
TCTATGAAGTTTGTCAAGAATGTGATAGCAGGGATTAGGGAAACTGAAGAGAAATTTACTACTACATCGTGC
AGGAAGAGAAGAACTACAGGGAATCCCTAACCCACTGCAGGATTCGGGGTGGAAATGCTAGCCATGCCCAA
GGATGAAGCTGCCAACACACTCATCGCTGACTATGTTGCCAAGAGTGGCTTCTTTCCGGGTGTTTCATTGGC
GTGAATGACCTTGAAAGGGAGGGACAGTACATGTTACAGACAACACTCCACTGCAGAATATAGCAACT
GGAATGAGGGGAAACCCAGCGACCCCTATGGTCATGAGGACTGTGTGGAGATGCTGAGCTCTGGCAGATG
GAATGACACAGAGTGCCATCTTACCATGTACTTTGTCTGTGAGTTCATCAAGAAGAAAAAG

ACGCGTACGCGGCCGCTCGAGCAGAAACTCATCTCAGAAGAGGATCTGGCAGCAAATGATATCCTGGATT
ACAAGGATGACGACGATAAGGTTTAA



[View online »](#)

Protein Sequence: >RC220039 protein sequence
Red=Cloning site Green=Tags(s)

MNGFASLLRRNQFILLVFLFLLQIQLGLDIDSRPTAEVCATHTISPGPKGDDGEKGDPPGEEGKHGKVGGRM
 GPKGIKGEIGDMGDQGNIGKTGPIGKKGDKGEKGLLIPGEGKAGTVDCGRYRKFVQQLDISIARLKT
 SMKFKVKNVIAGIRETEEFYIIVQEEKNYRESLTHCRIRGGMAMPKDEAANTLIADYVAKSGFFRVFIG
 VNDLEREGQYMFDTNTPLQNYSNWNEGEPSPDYPGHEDCVEMLSSGRWNDTECHL TMYFVCEF I K K K K

TRTRPLEQKLISEEDLAANDILDYKDDDDKV

Chromatograms: https://cdn.origene.com/chromatograms/mk6448_c01.zip

Restriction Sites: SgfI-MluI

Cloning Scheme:

Cloning sites used for ORF Shuttling:



* The last codon before the Stop codon of the ORF

ACCN: NM_006438

ORF Size: 831 bp

OTI Disclaimer: The molecular sequence of this clone aligns with the gene accession number as a point of reference only. However, individual transcript sequences of the same gene can differ through naturally occurring variations (e.g. polymorphisms), each with its own valid existence. This clone is substantially in agreement with the reference, but a complete review of all prevailing variants is recommended prior to use. [More info](#)

OTI Annotation: This clone was engineered to express the complete ORF with an expression tag. Expression varies depending on the nature of the gene.

Components: The ORF clone is ion-exchange column purified and shipped in a 2D barcoded Matrix tube containing 10ug of transfection-ready, dried plasmid DNA (reconstitute with 100 ul of water).

Reconstitution Method:

1. Centrifuge at 5,000xg for 5min.
2. Carefully open the tube and add 100ul of sterile water to dissolve the DNA.
3. Close the tube and incubate for 10 minutes at room temperature.
4. Briefly vortex the tube and then do a quick spin (less than 5000xg) to concentrate the liquid at the bottom.
5. Store the suspended plasmid at -20°C. The DNA is stable for at least one year from date of shipping when stored at -20°C.

RefSeq: [NM_006438.5](#)

RefSeq Size: 1708 bp

RefSeq ORF: 834 bp

Locus ID: 10584

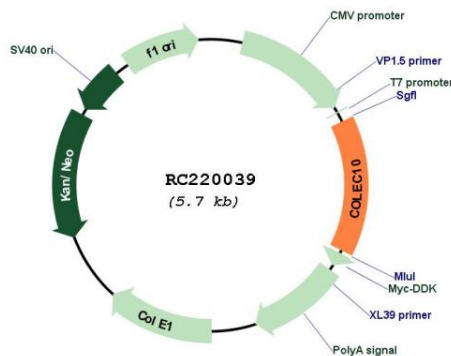
UniProt ID: [Q9Y6Z7](#)

Cytogenetics: 8q24.12

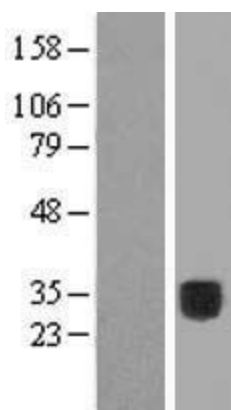
MW: 30.7 kDa

Gene Summary: This gene encodes a member of the C-lectin family, proteins that possess collagen-like sequences and carbohydrate recognition domains. The other members of this family are secreted proteins and bind to carbohydrate antigens on microorganisms facilitating their recognition and removal. This gene product is a cytosolic protein, a characteristic that suggests that it may have different biological functions than other C-lectins. [provided by RefSeq, Jul 2008]

Product images:



Circular map for RC220039



Western blot validation of overexpression lysate (Cat# [LY416646]) using anti-DDK antibody (Cat# [TA50011-100]). Left: Cell lysates from untransfected HEK293T cells; Right: Cell lysates from HEK293T cells transfected with RC220039 using transfection reagent MegaTran 2.0 (Cat# [TT210002]).