

## Product datasheet for **RC220030**

### LDLRAD1 (NM\_001010978) Human Tagged ORF Clone

#### Product data:

Product Type: Expression Plasmids  
 Product Name: LDLRAD1 (NM\_001010978) Human Tagged ORF Clone  
 Tag: Myc-DDK  
 Symbol: LDLRAD1  
 Mammalian Cell Selection: Neomycin  
 Vector: pCMV6-Entry (PS100001)  
 E. coli Selection: Kanamycin (25 ug/mL)  
 ORF Nucleotide Sequence: >RC220030 ORF sequence  
 Red=Cloning site Blue=ORF Green=Tags(s)

TTTTGTAATACGACTCACTATAGGGCGGCCGGAATTCGTCGACTGGATCCGGTACCGAGGAGATCTGCC  
 GCC**CGATCGCC**

ATGAACAAGGTCTTCCCCAGGGAGAGAATGGCTACACTGCTGCTGAATCCAAAGCCCACCCTGGAGGGG  
 AAGCAGGCGGGCCACCTCTGCTGCTCACGTCGCGGGGCTGCCTCTCTGCCTCTCTGCTGCTCCTCT  
 GGCAACTGTGGCGGCCCTCATCGCTTGGTCACCATTCTTGGACTCCCATCATGCACCCAGGAGCCCAA  
 GCTTGTATAACACTGACAAACAGGACAGGCTTCTTGTGCCATGACCAGAGGAGCTGCATTCCAGCCAGT  
 GGGTCTGTGATGGCGTTTCGACCTGTACCCACGGCAGGAGGATGAGAGCTTGTGCCGAGATGTGCC  
 CCAGAGCCTCCCCACTTCCTTGTGGCCACTGTGGAGACCCGGCCTCCTGGATCTACTCAGACCAAAAA  
 TGTGATGGCACTAACAACACTGCGGGGACTGTTCAAGTGAAGTGAAGTGAAGTGAAGTGAAGTGAAGT  
 GCCCTGGGTGGTGGCGCTGCTTCAACCTTCTTCAAGTACTGCGACTGTATACCGAGGCATCTCTGCC  
 CGACCATGTACAGCACTGCTCCGACTGGTCCGATGAGTATGCCTGTCCCGGACCC

**ACGCGT**ACGCGGGCGCTCGAGCAGAAACTCATCTCAGAAGAGGATCTGGCAGCAATGATATCCTGGATT  
 ACAAGGATGACGACGATAAGGTTTAA

Protein Sequence: >RC220030 protein sequence  
 Red=Cloning site Green=Tags(s)

MNKVFPQGENGYTAAESKAHPGGEAGGGHLCSSRRGACLSASLLLLLATVAALIALVILGLPSCTPGAQ  
 ACITLTNRGFLCHDQRSCIPASGVCDGVRTCTHGEDEDESLCRDVPQSLPHFLVAHCGDPASWIYSDQK  
 CDGTNCCGDCSDELSPTVCPPCPGWWRCPSTFFKYCDCIPRHLCRDHVQHCSDSWSEYACPGP

**TR**TRPLEQKLISEEDLAANDILDYKDDDDKV

Chromatograms: [https://cdn.origene.com/chromatograms/mk6452\\_c05.zip](https://cdn.origene.com/chromatograms/mk6452_c05.zip)



[View online »](#)

**Restriction Sites:** SgfI-MluI

**Cloning Scheme:**



**ACCN:** NM\_001010978

**ORF Size:** 615 bp

**OTI Disclaimer:** The molecular sequence of this clone aligns with the gene accession number as a point of reference only. However, individual transcript sequences of the same gene can differ through naturally occurring variations (e.g. polymorphisms), each with its own valid existence. This clone is substantially in agreement with the reference, but a complete review of all prevailing variants is recommended prior to use. [More info](#)

**OTI Annotation:** This clone was engineered to express the complete ORF with an expression tag. Expression varies depending on the nature of the gene.

**Components:** The ORF clone is ion-exchange column purified and shipped in a 2D barcoded Matrix tube containing 10ug of transfection-ready, dried plasmid DNA (reconstitute with 100 ul of water).

**Reconstitution Method:**

1. Centrifuge at 5,000xg for 5min.
2. Carefully open the tube and add 100ul of sterile water to dissolve the DNA.
3. Close the tube and incubate for 10 minutes at room temperature.
4. Briefly vortex the tube and then do a quick spin (less than 5000xg) to concentrate the liquid at the bottom.
5. Store the suspended plasmid at -20°C. The DNA is stable for at least one year from date of shipping when stored at -20°C.

**RefSeq:** [NM\\_001010978.4](#)

**RefSeq Size:** 2393 bp

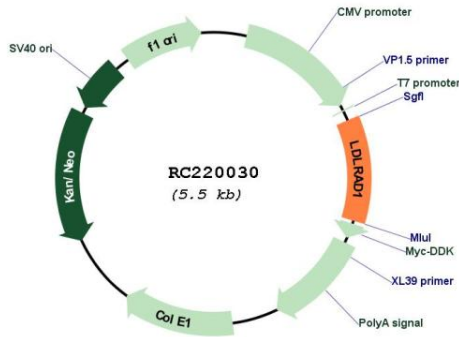
**RefSeq ORF:** 618 bp

**Locus ID:** 388633

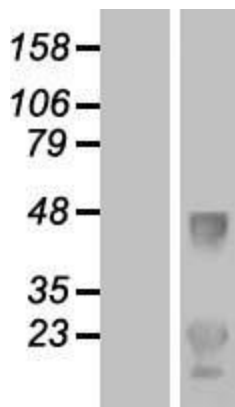
**UniProt ID:** [Q5T700](#)

**Cytogenetics:** 1p32.3  
**Protein Families:** Transmembrane  
**MW:** 21.8 kDa

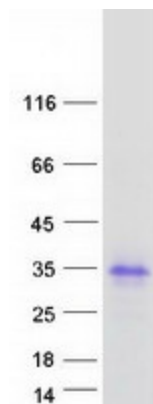
**Product images:**



Circular map for RC220030



Western blot validation of overexpression lysate (Cat# [LY423251]) using anti-DDK antibody (Cat# [TA50011-100]). Left: Cell lysates from untransfected HEK293T cells; Right: Cell lysates from HEK293T cells transfected with RC220030 using transfection reagent MegaTran 2.0 (Cat# [TT210002]).



Coomassie blue staining of purified LDLRAD1 protein (Cat# [TP320030]). The protein was produced from HEK293T cells transfected with LDLRAD1 cDNA clone (Cat# RC220030) using MegaTran 2.0 (Cat# [TT210002]).