

Product datasheet for **RC220022**

FCRL6 (NM_001004310) Human Tagged ORF Clone

Product data:

Product Type:	Expression Plasmids
Product Name:	FCRL6 (NM_001004310) Human Tagged ORF Clone
Tag:	Myc-DDK
Symbol:	FCRL6
Synonyms:	FcRH6
Mammalian Cell Selection:	Neomycin
Vector:	pCMV6-Entry (PS100001)
E. coli Selection:	Kanamycin (25 ug/mL)



[View online »](#)

ORF Nucleotide Sequence:

>RC220022 representing NM_001004310
 Red=Cloning site Blue=ORF Green=Tags(s)

TTTTGTAATACGACTCACTATAGGGCGGCCGGAATTCGTCGACTGGATCCGGTACCGAGGAGATCTGCC
 GCC**CGCATCGCC**

ATGCTGCTCTGGACGGCTGTGCTGCTCTTTGTTCCCTGTGTTGGGAAACTGTCTGGCTGTACCTCCAAG
 CCTGGCCAAACCTGTGTTTGAAGGAGATGCCCTAACTCTGCGATGTGAGGGATGGAAGAATACACCACT
 GTCTCAGGTGAAGTTCTACAGAGATGGAAAATTCCTTCATTTCTCTAAGGAAAACAGACTCTGTCCATG
 GGAGCAGCAACAGTGCAGAGCCGTGGCCAGTACAGCTGCTCTGGGCAGGTGATGTATATCCACAGACAT
 TCACACAAACTTCAGAGACTGCCATGGTTCAAGTCCAAGAGCTGTTTCCACCTCCTGTGCTGAGTGCCAT
 CCCCTCTCCTGAGCCCCGAGAGGGTAGCCTGGTGACCCTGAGATGTGAGACAAAGCTGCACCCCTGAGG
 TCAGCCTTGAGGCTCCTTTCTCCTTCCACAAGGACGGCCACACCTTGACAGGACAGGGGCCCTACCCAG
 AACTCTGCATCCCGGAGCCAAGGAGGGAGACTCTGGGCTTTACTGGTGTGAGGTGGCCCTGAGGGTGG
 CCAGGTCCAGAAGCAGAGCCCCAGCTGGAGGTCAGAGTGCAGGCTCCTGTATCCCGTCTGTGCTCACT
 CTGCACCAACGGGCTGCTGACCCCTGCTGTGGGGGACATGGTGCAGCTCCTCTGTGAGGCACAGAGGGCT
 CCCCTCCGATCCTGTATTCTTCTACCTTGATGAGAAGATTGTGGGGAGCCACTCAGCTCCCTGTGGTGG
 AACCACTCCCTCCTCTCCAGTGAAGTCAGAACAGGATGCTGGGAACTACTCCTGCGAGGCTGAGAAC
 AGTGTCTCCAGAGAGAGGAGTGAGCCCAAGAAGCTGTCTCTGAAGGGTTCTCAAGCTTGTCTCACTCCC
 CCAGCAACTGGCTGGTTCCTTGGCTTCTGCGAGCCTGCTTGGCCTGATGGTTATTGCTGCTGCACTTCT
 GGTTTATGTGAGATCCTGGAGAAAAGCTGGGCCCTTCCATCCCAGATACCACCCACAGCTCCAGGTGGA
 GAGCAGTGCCCACTATATGCCAACGTGCATCACCAGAAAGGAAAGATGAAGGTGTTGTCTACTCTGTGG
 TGCATAGAACCCTCAAAGAGGAGTGAAGCCAGTCTGCTGAGTTCACCGTGGGAGAAAGGACAGTTCTAT
 CATCTGTGCGGAGGTGAGATGCCTGCAGCCAGTGCAGGTTTCATCCACGGAGTGAATATGAGAAGCAGG
 ACTCTCCAAGAACCCTTAGCGACTGTGAGGAGTTCTCTGC

ACGCGTACGCGGCCGCTCGAGCAGAACTCATCTCAGAAGAGGATCTGGCAGCAATGATATCCTGGATT
 ACAAGGATGACGACGATAAGGTTTAA

Protein Sequence:

>RC220022 representing NM_001004310
 Red=Cloning site Green=Tags(s)

MLLWTAVLLFVPCVGKTVWLYLQAWPNPVFEGDALTLRCQGWKNTPLSQVKFYRDGKFLHFSKENQTL
 SMGAATVQSRGQYSCSGQVMYIPQTFQTSETAMVQVQELFPPVLSAIPSEPEPREGSLVTLRCQTKLHPLR
 SALRLLFSFKDGHLLQDRGPHPELCIPGAKEGDSGLYWCEVAPEGGQVQKQSPQLEVRVQAPVSRPVL
 LHHGPADPAVGDMMVQLLCEAQRGSPPILYSFYLDEKIVGSHSAPCGGTTSLLPVKSEQDAGNYSCEAEN
 SVSRERSEPKKLSLKGSQVLFPTASNWLVPWLPASLLGLMVIAAALLVYVRSWRKAGPLPSQIPPTAPGG
 EQCPLYANVHHQKKGKDEGVVYSVVHRTSKRSEARSAEFTVGRKDSSIICAEVRCLQPSEVSSTEVMRMR
 TLQEPLSDCEEVLC

TRTRPLEQKLISEEDLAANDILDYKDDDDKVV

Chromatograms:

https://cdn.origene.com/chromatograms/mk8001_h05.zip

Restriction Sites:

SgfI-MluI

Cloning Scheme:


ACCN: NM_001004310

ORF Size: 1302 bp

OTI Disclaimer: The molecular sequence of this clone aligns with the gene accession number as a point of reference only. However, individual transcript sequences of the same gene can differ through naturally occurring variations (e.g. polymorphisms), each with its own valid existence. This clone is substantially in agreement with the reference, but a complete review of all prevailing variants is recommended prior to use. [More info](#)

OTI Annotation: This clone was engineered to express the complete ORF with an expression tag. Expression varies depending on the nature of the gene.

Components: The ORF clone is ion-exchange column purified and shipped in a 2D barcoded Matrix tube containing 10ug of transfection-ready, dried plasmid DNA (reconstitute with 100 ul of water).

- Reconstitution Method:**
1. Centrifuge at 5,000xg for 5min.
 2. Carefully open the tube and add 100ul of sterile water to dissolve the DNA.
 3. Close the tube and incubate for 10 minutes at room temperature.
 4. Briefly vortex the tube and then do a quick spin (less than 5000xg) to concentrate the liquid at the bottom.
 5. Store the suspended plasmid at -20°C. The DNA is stable for at least one year from date of shipping when stored at -20°C.

RefSeq: [NM_001004310.1](#), [NP_001004310.1](#)

RefSeq Size: 1306 bp

RefSeq ORF: 1305 bp

Locus ID: 343413

UniProt ID: [Q6DN72](#)

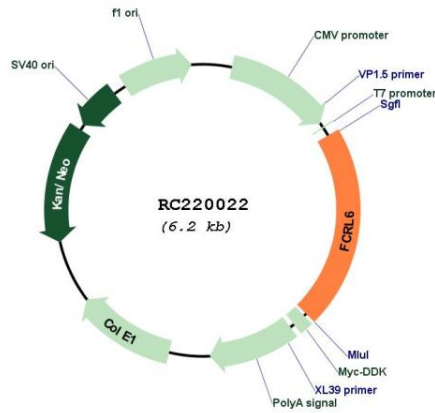
Cytogenetics: 1q23.2

Protein Families: Druggable Genome, Transmembrane

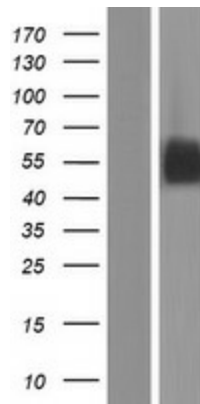
MW: 47.6 kDa

Gene Summary: Acts as a MHC class II receptor (PubMed:20519654). When stimulated on its own, does not play a role in cytokine production or the release of cytotoxic granules by NK cells and cytotoxic CD8(+) T cells (PubMed:17213291, PubMed:18991291). Does not act as an Fc receptor (PubMed:18991291).[UniProtKB/Swiss-Prot Function]

Product images:



Circular map for RC220022



Western blot validation of overexpression lysate (Cat# [LY424086]) using anti-DDK antibody (Cat# [TA50011-100]). Left: Cell lysates from untransfected HEK293T cells; Right: Cell lysates from HEK293T cells transfected with RC220022 using transfection reagent MegaTran 2.0 (Cat# [TT210002]).