

Product datasheet for RC220013

LHFPL3 (NM_199000) Human Tagged ORF Clone

Product data:

Product Type:	Expression Plasmids
Product Name:	LHFPL3 (NM_199000) Human Tagged ORF Clone
Tag:	Myc-DDK
Symbol:	LHFPL3
Synonyms:	LHFPL4
Mammalian Cell Selection:	Neomycin
Vector:	pCMV6-Entry (PS100001)
E. coli Selection:	Kanamycin (25 ug/mL)
ORF Nucleotide Sequence:	>RC220013 ORF sequence Red=Cloning site Blue=ORF Green=Tags(s)

TTTTGTAATACGACTCACTATAGGGCGGCCGGAATTCGTCGACTGGATCCGGTACCGAGGAGATCTGCC
GCC**CGATCGCC**

ATGCCCGAGCCGCCGCTGCCGCCGCCGCCGCCGCGATGCTCCCGACTCAGGAGGCTGCCAAGC
TGTACCACACCAACTATGTGCGAACTCGCGGCCATCGGCGTGTGTGGCCATCTTCACCATCTGCTT
TGCCATCGTCAACGTGGTGTGCTTCATCCAGCCCTACTGGATAGGCGACGGCGTGGACCCCCGCAAGCC
GGCTATTTGGGGCTCTTCCACTACTGCATCGGCAACGGCTTCTCCGGGAGCTGACCTGCAGGGGACGCT
TCACGGACTTCTCCACGCTGCCCTCGGGCGCCTCAAAGCCGCCCTCTTCTTTATCGGCCCTCCATGAT
GCTCATCATTGCCTGCATCATTTGCTTTACCCTCTTCTTCTGCAACACGGCCACTGTGTACAAGATA
TGTGCCTGGATGCAGCTCACCTCCGCTGCCTGTGCTTGGCTGTATGATTTCCCTGATGGCTGGG
ACTCAGATGAAGTAAAACGGATGTGTGGAGAAAAGACAGACAAGTACACTCTTGGGGCTTGTCTAGTCCG
CTGGGCATACATCCTGGCTATTATTGGAATTTGGATGCCCTGATCCTCTCATTCTAGCATTGTGCTT
GGTAATCGACAAGACAGCTTGTATGGCAGAGGAAGTGAAGGCAGAAAACAAAGTTCTGCTAAGCCAATATT
CTCTAGAA

ACGCGTACGCGGCCGCTCGAGCAGAACTCATCTCAGAAGAGGATCTGGCAGCAAATGATATCCTGGATT
ACAAGGATGACGACGATAAGGTTTAA



[View online »](#)

Protein Sequence: >RC220013 protein sequence
Red=Cloning site Green=Tags(s)

MPGAAAAAAAAAAMLPTQEAAKLYHTNYVRNSRAIGVLWAIFTICFAIVNVVCFIQPYWIGDGVDPQA
 GYFGLFHYCIGNGFSRELTCRGSFTDFSTLPSGAFKAASFFIGLMMLLIACIIICFTLFFFCNTATVYKI
 CAWMQLTSAACLVLGCMIFPDGWDSDVEVKRMCGEKTDKYTLGACSVRWAYILAIIGILDALILSFLAFVL
 GNRQDSLMAEELKAENKVLVLSQYSLE

TRTRPLEQKLISEEDLAANDILDYKDDDDKV

Chromatograms: https://cdn.origene.com/chromatograms/mk6558_d12.zip

Restriction Sites: SgfI-MluI

Cloning Scheme:

Cloning sites used for ORF Shuttling:



* The last codon before the Stop codon of the ORF

ACCN: NM_199000

ORF Size: 708 bp

OTI Disclaimer: The molecular sequence of this clone aligns with the gene accession number as a point of reference only. However, individual transcript sequences of the same gene can differ through naturally occurring variations (e.g. polymorphisms), each with its own valid existence. This clone is substantially in agreement with the reference, but a complete review of all prevailing variants is recommended prior to use. [More info](#)

OTI Annotation: This clone was engineered to express the complete ORF with an expression tag. Expression varies depending on the nature of the gene.

Components: The ORF clone is ion-exchange column purified and shipped in a 2D barcoded Matrix tube containing 10ug of transfection-ready, dried plasmid DNA (reconstitute with 100 ul of water).

Reconstitution Method:

1. Centrifuge at 5,000xg for 5min.
2. Carefully open the tube and add 100ul of sterile water to dissolve the DNA.
3. Close the tube and incubate for 10 minutes at room temperature.
4. Briefly vortex the tube and then do a quick spin (less than 5000xg) to concentrate the liquid at the bottom.
5. Store the suspended plasmid at -20°C. The DNA is stable for at least one year from date of shipping when stored at -20°C.

RefSeq: [NM_199000.2](#), [NP_945351.1](#)

RefSeq Size: 3191 bp

RefSeq ORF: 711 bp

Locus ID: 375612

UniProt ID: [Q86UP9](#)

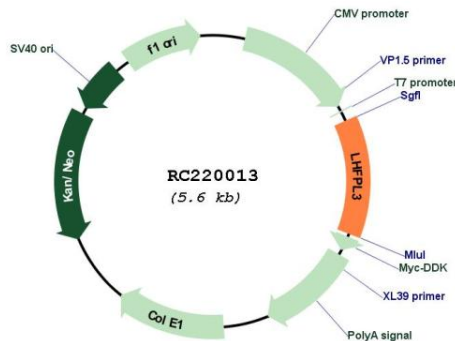
Cytogenetics: 7q22.2-q22.3

Protein Families: Transmembrane

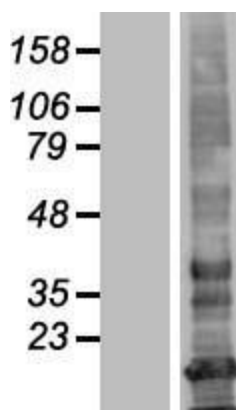
MW: 25.8 kDa

Gene Summary: This gene is a member of the lipoma HMGIC fusion partner (LHFP) gene family, which is a subset of the superfamily of tetraspan transmembrane protein encoding genes. Mutations in one LHFP-like gene result in deafness in humans and mice, and a second LHFP-like gene is fused to a high-mobility group gene in a translocation-associated lipoma. A partial gene fragment named LHFPL4 corresponds to a portion of the first exon of this gene. [provided by RefSeq, Jul 2008]

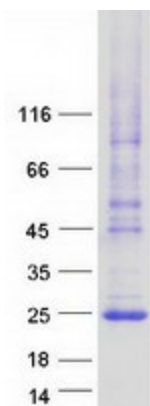
Product images:



Circular map for RC220013



Western blot validation of overexpression lysate (Cat# [LY404712]) using anti-DDK antibody (Cat# [TA50011-100]). Left: Cell lysates from untransfected HEK293T cells; Right: Cell lysates from HEK293T cells transfected with RC220013 using transfection reagent MegaTran 2.0 (Cat# [TT210002]).



Coomassie blue staining of purified LHFPL3 protein (Cat# [TP320013]). The protein was produced from HEK293T cells transfected with LHFPL3 cDNA clone (Cat# RC220013) using MegaTran 2.0 (Cat# [TT210002]).