

Product datasheet for **RC220012**

CCDC125 (NM_176816) Human Tagged ORF Clone

Product data:

Product Type:	Expression Plasmids
Product Name:	CCDC125 (NM_176816) Human Tagged ORF Clone
Tag:	Myc-DDK
Symbol:	CCDC125
Synonyms:	KENAE
Mammalian Cell Selection:	Neomycin
Vector:	pCMV6-Entry (PS100001)
E. coli Selection:	Kanamycin (25 ug/mL)



[View online »](#)

ORF Nucleotide Sequence:

>RC220012 representing NM_176816
 Red=Cloning site Blue=ORF Green=Tags(s)

TTTTGTAATACGACTCACTATAGGGCGGCCGGAATTCGTCGACTGGATCCGGTACCGAGGAGATCTGCC
 GCC**CGCATCGCC**

ATGAGCAAGTGGCAAGATCATCAAGTGAAGTGCAGCTCTGGGAAACAGAAGAGGATGACATGA
 CAGAAGGTGATTTAGGGTATGGCCTCGGAAGGAAACCTGGTGGGATTTATGAAATAGAATTTTCACATAG
 GTCTAGAAAAAGATCAGATGAAAGAACCTTAGCCCTCCTCCATTTCCGAGAAAGGGAGAAGAAAGAAAT
 GAAGCGAGTTTTCAAGTATTCCAAGCATAAGAGCCAGCAAGATACATTCCTCAAGTGTCCAGAATTTCCA
 ATTACAGACGACAAAGTAGCACTGTAGATTGCAATTCAGAATTGTCAAATGAAGAATTAAGGCAATGTCT
 TAATGAACTTTAGAGGAGGTAGAAATGTTAAAACTGAACTTGAGGCATCTCAAAGACAACCTCAGAGGT
 AAAGAGGAAGCATTGAAAATTTCAAAGCATGGCAACTGAGGCAAGCAAGTCAACGAGGCAAGTCAACGAGGCA
 TGCTTCAAAAACTATGGAACAAAACAGATCCTTGGAGAAGGAAATAAATGCCTTGCAAGTGGGAAATAGA
 ATTTGATCATAATAGATTTAAAAATATAGAGGAATCTTGGATCCAAAAATATGACAGGCTAAACTGTGAA
 AATGCAGTCTCAAAGAGAATTTGAAAGTGAACAGAAAGAAATTAATGCTGAAGTCTGACAATGCAG
 TTTTGAATCAACGGTATTTGGAGGCCCTCGCCATGCTTGATATCAACAGCAGAAGATGGCTCAGAAAA
 CATGTGCTGTGATAAAAGTGGCTTTGCAGAGGCTTCAGGTCTTGAGCTTGCGGTCTCGGAGCCTGCCTT
 TGTGATGGGCCCGGAGGGAACCCCTGTTCTTGTGCCAGAAATGGCAGCATCCACTCGGAACTGCTTCTTC
 AGCTCAAACAAGAGTTGGAAATTTGCAGAAGAGTAAAGAAGAAGCTTACGTGATGGCAGATGCTTTTCAG
 AATTGCATTTGAGCAACAATTAATGAGAAAAATGACCAGGCACTACAATTGACACAAATGGATAAAATG
 CATAAAAAAGCAACAAAATGGATGAATTGGAAGCACCTTAAAGAGGATGGATTTCCATCACCAAGGAGTA
 AGAAGACCTTCGGGCAGAGACTGTTGGGTATGCTCCCTTCAGAAAACAGTCTAAGAGGATGGAAGACCA
 GGACAGTCTCAAGAGGTCCTTAAGATGCTCATAGATTTGCTTAATGATAAAGAAGAAGCTTTGGCTCAT
 CAAAGAAAAGTTAGCTACATGCTTGTGCTCGGCATTGGAAGACAAAAGACACTGCTTCAAACGAGAATAAAG
 AAAAAATCCTATAAAAGAGAATTTCCCTTTCAACAACCCCTGGCGTAAGACTTCAGAATTTCTGTGTTT
 GGGTGATCCTATACATCAAGTGTCTGCATTTAAATTCTGTGGGCTGCATTTGTTCAATCCAGCACTCT
 CAAATAGATCCAACTATAGAATCTTAAAGATCCCATTCTTTGCCATCAAGTATCATATTT

ACGCGTACGCGGCCGCTCGAGCAGAAACTCATCTCAGAAGAGGATCTGGCAGCAAATGATATCCTGGATT
 ACAAGGATGACGACGATAAGGTTTAA

Protein Sequence:

>RC220012 representing NM_176816
 Red=Cloning site Green=Tags(s)

MSKVARSSSESDVQLWETEEDDMTEGDLGYGLGRKPGGIYEIEFSHRSRKRSDGKNFSPPPFPRKGEERN
 EASFQYSKHKSSQDTPQVSRISNYRRQSTVDSNSELSNEELRQCLNETLEEVEMLKTELEASQRQLRG
 KEEALKILQSMAILGKATSHTQAVLQKTMENRSLKEINALQWEIEFDHNRFKNIEESWIQKYDRLNCE
 NAVLKENLKVKTEEIKMLKSDNAVLNQRYLEALMLDIKQKMAQENMCCDKSGFAEASGLELAVLGACL
 CHGPGGNPCSCARMASTRKLLQLKQELEILQKSKEEAYVMADAFRIAFEQQLMRKNDQALQLTQMDKM
 HKKATKWMNWKHLKEDGFSPRSKKTFGQRLGMLPSENSSKRMEDQDSPQEVLMKIDLLNDKEEALAH
 QRKVSYMLARALEDKDTASNENKEKNPIKENFPFNNPWRKTSEFSVLGDPHSSVCILNSVGCICSIQHS
 QIDPNYRTLKRSHSLPSSIIF

TRTRPLEQKLISEEDLAANDILDYKDDDDKV

Chromatograms:

https://cdn.origene.com/chromatograms/mk8020_c09.zip

Restriction Sites:

SgfI-MluI

Cloning Scheme:


ACCN: NM_176816

ORF Size: 1533 bp

OTI Disclaimer: The molecular sequence of this clone aligns with the gene accession number as a point of reference only. However, individual transcript sequences of the same gene can differ through naturally occurring variations (e.g. polymorphisms), each with its own valid existence. This clone is substantially in agreement with the reference, but a complete review of all prevailing variants is recommended prior to use. [More info](#)

OTI Annotation: This clone was engineered to express the complete ORF with an expression tag. Expression varies depending on the nature of the gene.

Components: The ORF clone is ion-exchange column purified and shipped in a 2D barcoded Matrix tube containing 10ug of transfection-ready, dried plasmid DNA (reconstitute with 100 ul of water).

- Reconstitution Method:**
1. Centrifuge at 5,000xg for 5min.
 2. Carefully open the tube and add 100ul of sterile water to dissolve the DNA.
 3. Close the tube and incubate for 10 minutes at room temperature.
 4. Briefly vortex the tube and then do a quick spin (less than 5000xg) to concentrate the liquid at the bottom.
 5. Store the suspended plasmid at -20°C. The DNA is stable for at least one year from date of shipping when stored at -20°C.

RefSeq: [NM_176816.5](#)

RefSeq Size: 2739 bp

RefSeq ORF: 1536 bp

Locus ID: 202243

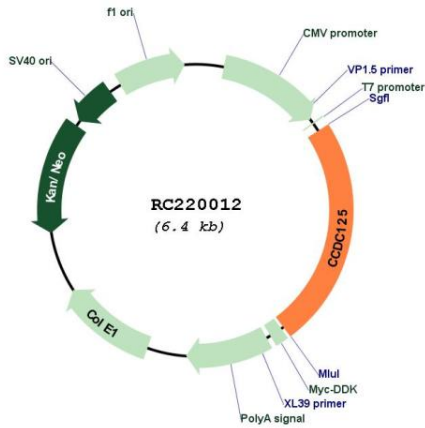
UniProt ID: [Q86Z20](#)

Cytogenetics: 5q13.2

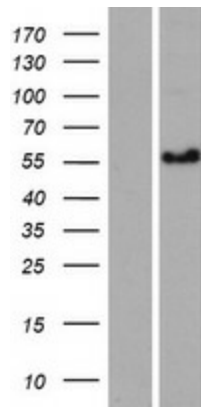
MW: 58.4 kDa

Gene Summary: May be involved in the regulation of cell migration.[UniProtKB/Swiss-Prot Function]

Product images:



Circular map for RC220012



Western blot validation of overexpression lysate (Cat# [LY406052]) using anti-DDK antibody (Cat# [TA50011-100]). Left: Cell lysates from untransfected HEK293T cells; Right: Cell lysates from HEK293T cells transfected with RC220012 using transfection reagent MegaTran 2.0 (Cat# [TT210002]).