

Product datasheet for **RC219998**

P2X2 (P2RX2) (NM_016318) Human Tagged ORF Clone

Product data:

Product Type:	Expression Plasmids
Product Name:	P2X2 (P2RX2) (NM_016318) Human Tagged ORF Clone
Tag:	Myc-DDK
Symbol:	P2X2
Synonyms:	DFNA41; P2X2
Mammalian Cell Selection:	Neomycin
Vector:	pCMV6-Entry (PS100001)
E. coli Selection:	Kanamycin (25 ug/mL)



[View online »](#)

ORF Nucleotide Sequence:

>RC219998 representing NM_016318
 Red=Cloning site Blue=ORF Green=Tags(s)

TTTTGTAATACGACTCACTATAGGGCGGCCGGGAATTCGTGACTGGATCCGGTACCGAGGAGATCTGCC
 GCC**CGGATCGCC**

ATGGCCGCGCCAGCCCAAGTACCCCGCGGGGCGACCGCCGCGCCTGGCCCGGGCTGCTGGTCCG
 CCTCTGGGACTACGAGACGCCAAGGTGATCGTGGTGAGGAACCGCGCCTGGGGTCTGTACCGCGC
 CGTGACGTGCTCATCTGCTCTACTTCGTGTGGTACGTATTCATCGTGCAGAAAAGCTACCAGGAGAGC
 GAGACGGGCCCGAGAGCTCCATCATCACCAAGGTCAAGGGGATCACACGTCCGAGCACAAAGTGTGGG
 ACGTGGAGGAGTACGTGAAGCCCCCGAGAGCATAAGGGTCCACAACGCCACCTGCCTCTCCGACGCCGA
 CTGCGTGGCTGGGGAGCTGGACATGCTGGGAAACGGCCTGAGGACTGGGCGCTGTGTGCCATTACCAG
 GGGCCCTCCAAGACCTGCGAGGTGTTCCGCTGGTGCCCGTGAAGATGGGGCCTCTGTCAGCCAATTTT
 TGGGTACGATGGCCCAAATTTACCATCTCATCAAGAACAGCATCCACTACCCCAAATTCACCTTCTC
 CAAGGGCAACATCGCCGACCGCACAGACGGGTACCTGAAGCGCTGCACGTTCCACGAGGCCTCCGACCTC
 TACTGCCCATCTTCAAGCTGGGCTTTATCGTGGAGAAGGCTGGGGAGAGCTTACAGAGCTCGCACACA
 AGGGTGGTGTATCGGGTCAATCAACTGGGACTGTGACCTGGACCTGCCTGCATCGGAGTGCAACCC
 CAAGTACTCCTTCGGAGGCTTGACCCCAAGCAGTGCCTGCCTCGTCAGGCTACAACTTTCAGGTTTGC
 AAATACTACAAGTCAATGGCACCACCACCGCACGCTCATCAAGGCCTACGGGATCCGCATTGACGTCA
 TTGTGCATGGACAGGCCGGGAAGTTCAGCCTGATCCCACCATTATTAATCTGGCCACAGCTCTGACTTC
 CGTCGGGTGGCTCCTTCTGTGCGACTGGATCTTGTAACATTCATGAACAAAAACAAGGTCTACAGC
 CATAAGAAATTTGACAAGGTGTGTACGCCGAGCCACCCCTCAGGTAGCTGGCCTGTGACCCTTGGCCGTG
 TATTGGGCCAGGCCCTCCCGAACCCGGCCACCGCTCCGAGGACCAGCACCCAGCCCTCCATCAGGCCA
 GGAGGGCCAACAAGGGGAGAGTGTGGCCAGCCTTCCCGCCCTGCGGCCTTGGCCCATCTCTGCCCT
 TCTGAGCAGATGGTGGACTCTGCTCCGAGCCTGCCAAGCCTCCACACCCACAGACCCCAAAGGTT
 TGGCTCAACTC

ACGCGTACGCGGCCGCTCGAGCAGAAACTCATCTCAGAAGAGGATCTGGCAGCAAATGATATCCTGGATT
 ACAAGGATGACGACGATAAGGTTTAA

Protein Sequence:

>RC219998 representing NM_016318
 Red=Cloning site Green=Tags(s)

MAAAQPKYPAGATARRLARGCWSALWDYETPKVIIVRNRRLGVL YRAVQLL ILLYFVWYV FIVQKSYQES
 ETGPESIITKVKGITTESEHKVWDVEEYVKPPESIRVHNATCLSDADCVAGELDMLGNLRTGRCVPYYQ
 GPSKTCVFGWCPVEDGASVSQFLGTMAPNFTILIKNSIHYPKFHF SKGNIADRTDGYLKRCTFHEASDL
 YCPIFKLGFIVEKAGESFTELAHKGGVIGVIINWDCDLDLPASECNPKYSFRRLDPKHVPASSGYNFRFA
 KYKINGTTTRTLIKAYGIRIDVIVHGQAGKFSLIPTIINLATALTSVGVGSFLCDWILLTFMNKNKVYS
 HKKFDKVCTPSHPSGWPVTLARVLGQAPPEPGHRSEDQHPSPPSQEGQQAECGPAFPPLRPCPISAP
 SEQMVDTPASEPAQASTPTDPKGLAQL

TRTRPLEQKLISEEDLAANDILDYKDDDDKV

Chromatograms:

https://cdn.origene.com/chromatograms/mk8060_f06.zip

Restriction Sites:

Sgfl-Mlul

Cloning Scheme:



ACCN: NM_016318

ORF Size: 1341 bp

OTI Disclaimer: The molecular sequence of this clone aligns with the gene accession number as a point of reference only. However, individual transcript sequences of the same gene can differ through naturally occurring variations (e.g. polymorphisms), each with its own valid existence. This clone is substantially in agreement with the reference, but a complete review of all prevailing variants is recommended prior to use. [More info](#)

OTI Annotation: This clone was engineered to express the complete ORF with an expression tag. Expression varies depending on the nature of the gene.

Components: The ORF clone is ion-exchange column purified and shipped in a 2D barcoded Matrix tube containing 10ug of transfection-ready, dried plasmid DNA (reconstitute with 100 ul of water).

Reconstitution Method:

1. Centrifuge at 5,000xg for 5min.
2. Carefully open the tube and add 100ul of sterile water to dissolve the DNA.
3. Close the tube and incubate for 10 minutes at room temperature.
4. Briefly vortex the tube and then do a quick spin (less than 5000xg) to concentrate the liquid at the bottom.
5. Store the suspended plasmid at -20°C. The DNA is stable for at least one year from date of shipping when stored at -20°C.

RefSeq: [NM_016318.4](#)

RefSeq Size: 1758 bp

RefSeq ORF: 1344 bp

Locus ID: 22953

UniProt ID: [Q9UBL9](#)

Cytogenetics: 12q24.33

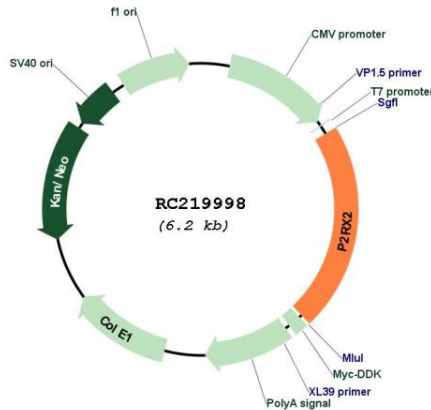
Protein Families: Druggable Genome, Ion Channels: ATP Receptors, Transmembrane

Protein Pathways: Calcium signaling pathway, Neuroactive ligand-receptor interaction

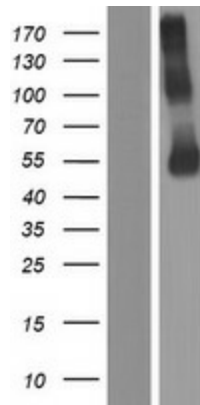
MW: 49.1 kDa

Gene Summary: The product of this gene belongs to the family of purinoceptors for ATP. This receptor functions as a ligand-gated ion channel. Binding to ATP mediates synaptic transmission between neurons and from neurons to smooth muscle. Multiple transcript variants encoding distinct isoforms have been identified for this gene. [provided by RefSeq, Aug 2013]

Product images:



Circular map for RC219998



Western blot validation of overexpression lysate (Cat# [LY414051]) using anti-DDK antibody (Cat# [TA50011-100]). Left: Cell lysates from untransfected HEK293T cells; Right: Cell lysates from HEK293T cells transfected with RC219998 using transfection reagent MegaTran 2.0 (Cat# [TT210002]).