

## Product datasheet for RC219993

### DMRTC1 (DMRTC1B) (NM\_001080851) Human Tagged ORF Clone

#### Product data:

**Product Type:** Expression Plasmids  
**Product Name:** DMRTC1 (DMRTC1B) (NM\_001080851) Human Tagged ORF Clone  
**Tag:** Myc-DDK  
**Symbol:** DMRTC1  
**Mammalian Cell Selection:** Neomycin  
**Vector:** pCMV6-Entry (PS100001)  
**E. coli Selection:** Kanamycin (25 ug/mL)  
**ORF Nucleotide Sequence:** >RC219993 representing NM\_001080851  
 Red=Cloning site Blue=ORF Green=Tags(s)

TTTTGTAATACGACTCACTATAGGGCGGCCGGAATTCGTCGACTGGATCCGGTACCGAGGAGATCTGCC  
 GCC**CGATCGCC**

ATGGCTGCCCTCCCAAAGCTCCCATCCGTGTCAGGAATTTGACCATCAGAGCAGGAGCCCTCACTGGGA  
 AGGAGAACAACATGCTGCAGCCCGAGACCCACATCTTACAGCCCCGAGGAGGGGAGCTCCCAAGGGGC  
 TCTGCTGCTTGGCCAGGCCCCAGAACCTTTGTCTCTGCCCTGTACTCCAGTGACCTTGGAGCAGCAACTG  
 GTTCTCCTTCTGGGGATCCCCACAGGGCCCTGCCCTGCCAGCATATGCTCAACTCTGATCCTCCAGC  
 CCTGTGCCACCTTGACCCTTCTACTGCAGCCACAGGTCCCAAAGTCTCTGACCAGCTTTGGTTTC  
 TGCCCACTCAGAGTGGCAGCGGAAGCTGGAGCCGCTGAGGCTCTGCTGACTCTGAGAAACTCTGCCAG  
 GCCCTCCTGACTCCATCTCCCTGCACCAGCCTTGCAACCCACCAGCTCCTGCTGGAGATAAAGGATTCC  
 AGCCTCCAGCCCTCTCTCCGCCCCAGGCCAGCCAGCTCCATCTCGCTGCCTATTGGACATCTGGGATG  
 CATCTCCCTTTGAGC

**ACGCGT**ACGCGGCCGCTCGAGCAGAAACTCATCTCAGAAGAGGATCTGGCAGCAATGATATCCTGGATT  
 ACAAGGATGACGACGATAAGGTTTAA

**Protein Sequence:** >RC219993 representing NM\_001080851  
 Red=Cloning site Green=Tags(s)

MAAPPKAPIRVRNLTIRAGALTGKENMLQPETHIFTAPEEGSSQGALLLQGAPEPLSLPCTPVTLEQQL  
 VSPSGDPHRAPALPSICSTLILQPCATLDPLLLQPQVPKVSDQALVSAHSEWQRKLEAAEALLTLRNSAQ  
 APPDISLHQPCNPPAPAGDKGFQPPSPSLRPRPASSISLPIGHLGCISLLS

**TR**TRPLEQKLISEEDLAANDILDYKDDDDKV

**Chromatograms:** [https://cdn.origene.com/chromatograms/mk8020\\_d01.zip](https://cdn.origene.com/chromatograms/mk8020_d01.zip)



[View online »](#)

Restriction Sites: SgfI-MluI

Cloning Scheme:



ACCN: NM\_001080851

ORF Size: 576 bp

OTI Disclaimer: The molecular sequence of this clone aligns with the gene accession number as a point of reference only. However, individual transcript sequences of the same gene can differ through naturally occurring variations (e.g. polymorphisms), each with its own valid existence. This clone is substantially in agreement with the reference, but a complete review of all prevailing variants is recommended prior to use. [More info](#)

OTI Annotation: This clone was engineered to express the complete ORF with an expression tag. Expression varies depending on the nature of the gene.

Components: The ORF clone is ion-exchange column purified and shipped in a 2D barcoded Matrix tube containing 10ug of transfection-ready, dried plasmid DNA (reconstitute with 100 ul of water).

- Reconstitution Method:
1. Centrifuge at 5,000xg for 5min.
  2. Carefully open the tube and add 100ul of sterile water to dissolve the DNA.
  3. Close the tube and incubate for 10 minutes at room temperature.
  4. Briefly vortex the tube and then do a quick spin (less than 5000xg) to concentrate the liquid at the bottom.
  5. Store the suspended plasmid at -20°C. The DNA is stable for at least one year from date of shipping when stored at -20°C.

RefSeq: [NM\\_001080851.2](#)

RefSeq Size: 1100 bp

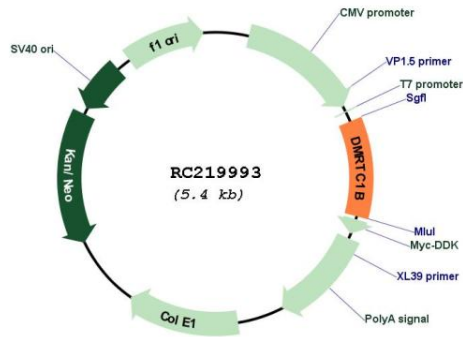
RefSeq ORF: 579 bp

Locus ID: 728656

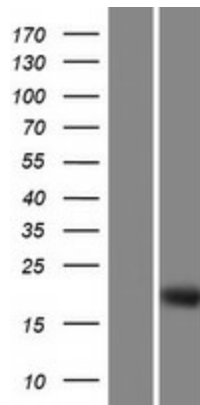
UniProt ID: [Q5HYR2](#)

Cytogenetics: Xq13.1  
 MW: 20 kDa

**Product images:**



Circular map for RC219993



Western blot validation of overexpression lysate (Cat# [LY421131]) using anti-DDK antibody (Cat# [TA50011-100]). Left: Cell lysates from untransfected HEK293T cells; Right: Cell lysates from HEK293T cells transfected with RC219993 using transfection reagent MegaTran 2.0 (Cat# [TT210002]).