

Product datasheet for **RC219991**

PGBD2 (NM_170725) Human Tagged ORF Clone

Product data:

Product Type:	Expression Plasmids
Product Name:	PGBD2 (NM_170725) Human Tagged ORF Clone
Tag:	Myc-DDK
Symbol:	PGBD2
Vector:	pCMV6-Entry (PS100001)
E. coli Selection:	Kanamycin (25 ug/mL)
Cell Selection:	Neomycin



[View online »](#)

ORF Nucleotide Sequence:

>RC219991 representing NM_170725
 Red=Cloning site Blue=ORF Green=Tags(s)

TTTTGTAATACGACTCACTATAGGGCGGCCGGAATTCGTCGACTGGATCCGGTACCGAGGAGATCTGCC
 GCC**CGCATCGCC**

ATGGCTTCAACATCCAGAGATGTATTGCTGGGAGAGGTATCCACTCAAAGGTGAAGTCTGCAAAGCTGC
 TTGAGGTTCTGAATGCTATGGAGGAGGAAGAGTCCAACAACAACAGGGAAGAGATTTTCATTGCACCTCC
 CGACAATGCTGCGGGGAATTCAGTATGAGGACTCAGGGGATGAAGACAGCCAGCGAGGTGCTCACCTA
 CCTGGCAGTGTGCTGCATGCTTCAGTCTGTGTGAGGACTCTGGCACCGGGGAGGATAATGACGACCTGG
 AGCTGCAGCCAGCAAGAAGAGGAGCAAAAGCAGTTGTGAAACCTCAGCGCATTGGACAAAAGAGATAT
 TCGTCCAGACTTTGGCAGTTGGACTGCATCAGATCCTCATATTGAGGATCTGAAAAGCCAAGAGCTGAGT
 CCCGTGGGCCCTTTTGTGTTGTTTTGATGAAGGAACAATTAATTTTCATTGTTAATGAAACCAATCGTT
 ATGCTTGGCAGAAAAATGTCAATTTGAGTCTTACGGCTCAGGAATTGAAGTGTGTTTTGGCATTTTGAT
 TTTAAGTGGGTACATCTTTATCCAAGGAGAAGGATGTTCTGGGAAACCTCTCCCGATTACATCATCAT
 CTTGTGGCTGATGCAATTAGAAGGGACAGATTTGAACTAATCTTCTCATACTTACATTTTGCAGATAACA
 ACGAACTTGATGCAAGTATAGTTTGGCAAGGTCAGACCTCTCATCATCCGGATGAACTGCAATTTCCA
 GAAGCATGCACCTTGGAAAGAGTTCTACAGCTTTGGCGAGTCTATGTGTGAGTACTTTGGGCACCGGGG
 TCCAAGCAGCTGCACAGGGGAAGCCTGTGCGACTTGGCTACAAGATTTGGTGTGGGACAACCAGCAGAG
 GCTACTTGGTGTGGTTTGGAGCCCTCACAGGGCACACTGTTTACCAAGCCAGACAGGAGCTTGGATCAGG
 AGGCAGTATGGTAATAAAATTTGGATGCGCTTCCAGGAGCGTGGTTTTCTGCCATATCATATTTTTT
 GACAAGGTTTTACAAGTGTAACTGATGTCCATTTTGGGAAAAAGGGGTGAAAGCCACAGGAACTG
 TTCGTGAGTACAGGACTGAGCGATGTCCCCTAAAAGACCCAAAGAAGTAAAAAATGAAGAGGGGTTT
 ATTTGATTACAAAAGTCGATGAGAGTGAGGAGATCATCGTGTGCCGCTGGCAGCATAGCAGCGTGGTCAAC
 ATTTGCTCCAATGCTGTGGGCATAGAGCCAGTGGGCTGACCAGTCGTCCTCTGGAGCAGCTAAAACGC
 GGACTCAGGTCCACCAGCCATCACTGGTGAAGCTGTATCAGGAGAAGTGGGTGGCGTTGGTAGGATGGA
 TCAGAATATTGCCAAGTACAAGGTGAAGATCCGAGGCATGAAGTGGTACTCAAGCTTTATTGGCTATGTC
 ATTGATGCTGCCCTCAACAATGCATGGCAGCTGCATAGAATCTGCTGCCAAGATGCCAGGTGGACCTCC
 TTGCCCTCCGGAGATACATTGCCTGTGTGTATCTGGAGAGCAATGCTGACACAACATCTCAAGGGAGGCG
 AAGCAGGCGGTTGGAGACTGAGAGCCGCTTCGATATGATTGGGCACTGGATTATCCATCAGGACAAGAGG
 ACCCGGTGTGCCCTCTGCCACTCACAGACCAACACCCGGTGTGAGAAGTGCCAGAAGGGTGTCCATGCCA
 AATGCTTCAGGGAGTACCACATCCGG

ACGCGTACGCGGCCGCTCGAGCAGAACTCATCTCAGAAGAGGATCTGGCAGCAAATGATATCCTGGATT
 ACAAGGATGACGACGATAAGGTTTAA

Protein Sequence:

>RC219991 representing NM_170725
 Red=Cloning site Green=Tags(s)

MASTSRDVIAGRGIHSHKVKSAKLLLEVLNAMEEEEEENNREEIFIAAPPDAAAGEFTDEDSGDEDSQRGAHL
 PGSVLHASVLCEDSGTGEDNDDLELQPAKKRQKAVVQPQRITWTKRDIRPDFGSWTASDPHIEDLKSQELS
 PVGLFELFFDEGTINFIVNETNRYAWQKNVNLSLTAQELKCVLGILILSGYISYPRRRMFWETSPDSSH
 LVADAIRDRFELIFSYLHFADNNELDASDRFAKVRPLIIRMNCFQKHAPLEEFYSFGESMCEYFGHRG
 SKQLHRGKPVRLGYKIWCGTTSRGYLVWFEPSTGLFTKPDRLDLGGSVMKIFVDALQERGFLLPYHIF
 DKVFTSVKLMSILRKKGVKATGTVREYRTERCPLKDPKELKKMKRGSFDYKVDSEEEIIVCRWHDSSV
 ICSNAVGIPEVRLTSRHSAAKTRTQVHQPSLVKLYQEKVGGVGRMDQNIKAKYKIRGMKMYSSFIGYV
 IDAALNNAWQLHRICQDAQVDLLAFRRYIACVYLESNADTTSQGRSRRLLETESRFDIMIGHWIIHQDKR
 TRCALCHSQTNTRCEKQKGVHAKCFREYHIR

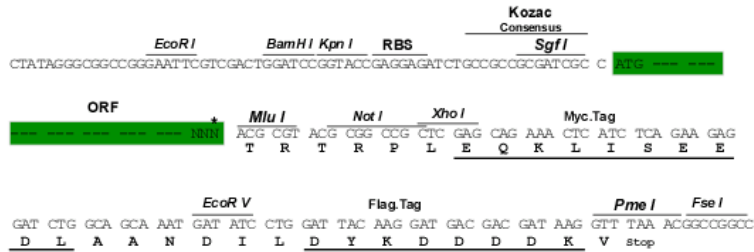
TRTRPLEQKLISEEDLAANDILDYKDDDDKV

Restriction Sites:

SgfI-MluI

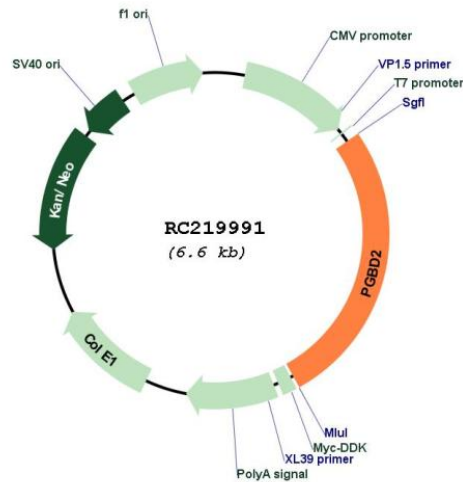
Cloning Scheme:

Cloning sites used for ORF Shutting:



* The last codon before the Stop codon of the ORF

Plasmid Map:



ACCN:

NM_170725

ORF Size:	1776 bp
OTI Disclaimer:	The molecular sequence of this clone aligns with the gene accession number as a point of reference only. However, individual transcript sequences of the same gene can differ through naturally occurring variations (e.g. polymorphisms), each with its own valid existence. This clone is substantially in agreement with the reference, but a complete review of all prevailing variants is recommended prior to use. More info
OTI Annotation:	This clone was engineered to express the complete ORF with an expression tag. Expression varies depending on the nature of the gene.
Components:	The ORF clone is ion-exchange column purified and shipped in a 2D barcoded Matrix tube containing 10ug of transfection-ready, dried plasmid DNA (reconstitute with 100 ul of water).
Reconstitution Method:	<ol style="list-style-type: none">1. Centrifuge at 5,000xg for 5min.2. Carefully open the tube and add 100ul of sterile water to dissolve the DNA.3. Close the tube and incubate for 10 minutes at room temperature.4. Briefly vortex the tube and then do a quick spin (less than 5000xg) to concentrate the liquid at the bottom.5. Store the suspended plasmid at -20°C. The DNA is stable for at least one year from date of shipping when stored at -20°C.
RefSeq:	NM_170725.3
RefSeq Size:	2712 bp
RefSeq ORF:	1779 bp
Locus ID:	267002
UniProt ID:	Q6P3X8
Cytogenetics:	1q44
MW:	67.8 kDa
Gene Summary:	The piggyBac family of proteins, found in diverse animals, are transposases related to the transposase of the canonical piggyBac transposon from the moth, <i>Trichoplusia ni</i> . This family also includes genes in several genomes, including human, that appear to have been derived from the piggyBac transposons. This gene belongs to the subfamily of piggyBac transposable element derived (PGBD) genes. The PGBD proteins appear to be novel, with no obvious relationship to other transposases, or other known protein families. The exact function of this gene is not known. Two transcript variants encoding different isoforms have been found for this gene. [provided by RefSeq, Jul 2008]