

Product datasheet for **RC219987**

CCDC41 (CEP83) (NM_001042399) Human Tagged ORF Clone

Product data:

Product Type:	Expression Plasmids
Product Name:	CCDC41 (CEP83) (NM_001042399) Human Tagged ORF Clone
Tag:	Myc-DDK
Symbol:	CCDC41
Synonyms:	CCDC41; NPHP18; NY-REN-58
Mammalian Cell Selection:	Neomycin
Vector:	pCMV6-Entry (PS100001)
E. coli Selection:	Kanamycin (25 ug/mL)



[View online »](#)

ORF Nucleotide
Sequence:

>RC219987 representing NM_001042399
Red=Cloning site Blue=ORF Green=Tags(s)

TTTTGTAATACGACTCACTATAGGGCGGCCGGAATTCGTGACTGGATCCGGTACCGAGGAGATCTGCC
GCCCGCATCGCC

ATGTTGTGTCAGCACATTTACCGATATGGACACTTTTCCAATAATTTTCCTCCTGGTGGAGACAGTGGAT
TGACAGGTTCTCAGTCGAGTTCAGAAAATGTTAATTGATGAAAGGTTACGATGTGAGCATCATAAAGC
TAATTATCAGACACTGAAGGCTGAACACACAAGGTTGCAGAATGAACATGTAAAGTTACAAAATGAACTC
AAGCACCTGTTTAAATGAAAAGCAAACCTCAGCAGGAAAACTTCAGCTCCTGCTTGAAGAATAAGAGGAG
AATTAGTAGAGAAAATAAGATTTAGAAGAAATGAACTGCAGATATTAACCCACAAAATTTGGAATT
GCTAAGAGCCAAATACAACAAGAATTAGAACTCCAATGAGAGAACGTTTTAGGAATCTAGATGAAGAG
GTAGAAAAGTATAGAGCTGTATAATAAGCTTCGCTATGAACATACATTTCTCAAGTCAGAATTTGAAC
ACCAGAAGGAAGAGTATGCACGATTTTAGATGAAGGAAAAATAAATATGAATCAGAGATTGCAAGACT
GGAGGAAGATAAAGAAGAACTACGTAACCAGCTGCTTAATGTTGATCTCACAAAAGACAGCAAACGAGTG
GAACAACCTGCTCGAGAAAAAGTCTATTTGTGTCAAAAATTAAGGTTTAGAGGCTGAAGTAGCGGAAT
TAAAGGCTGAAAAGGAGAATTCTGAGGCTCAGGTGAAAAATGCCCAAAGAATACAGGTGCCGCAGTTGGC
TGAGATGCAGGCTACAGTCAGATCCCTGGAGGCTGAAAAACAATCAGCTAATTTACGGGCAGAACGTTTG
GAAAAGAGCTACAATCAAGCAGTGAACAAAATACCTTTTTAATTAATAAATTCATAAAGCTGAACGAG
AAATAAATACATTGTCCAGTAAAGTAAAAGAACTTAAACATTCAAAACAACTGGAATAACAGACATCAA
ACTGGAGACAGCAAGAGCTAAGAGTGAGCTAGAAAAGAGAAAGGAATAAGATTCAAAGTGAAGTGGATGGA
TTACAGTCAGACAATGAAATTCAAAGCAGCTGTTGAACATCACAAAGTGTCTTAGTAGAAAAGGATC
GTGAATTAATACGTAAAGTACAAGCTGCCAAAAGAAGGTTATCAAAAACCTTGTGGTATTACAAGATGA
AAAGTTAGAAGCTCGAGAACAGATTAGCAGATTTGGAGAAAAATGAAAGTGAACATGATGTCTGGAGGCAA
TCTGAAAAGGATCAGTATGAAGAGAAATTCGCGGCTTCACAGATGGCAGAGAGATCACCAGGAAGGAGC
TTCAGAGTGTAGGTTAAAACCTCAGCAACAAATTTGTGACTATTGAAAATGCAGAGAAGGAAAAAATGA
AAATTCTGACCTAAAACAGCAAATCAGTAGTTTGAGATCCAAGTGAAGTCACTTGCACAGTCAGAGAAT
GACTTGTGAATTCAAACCAAATGCTGAAGGAAATGGTGGAGAGATTAAAACAAGAAATGCCGAAATTTTA
GAAGCCAAGCTGAAAAGCGCAACTAGAAGCTGAAAAGACATTGGAAGAGAAACAGATACAGTGGTTGGA
AGAAAAGCATAAGCTTCATGAGCGTATCACAGACAGAGAAGAAAAGTACAATCAAGCTAAGGAGAACTG
CAGCGAGCTGCAATGCCCAGAAAAAGAGAAAATCTCTTCATGAAAACAAATGAAAAGACTACAAGAGA
AAGTAGAAGTCTTGGAGCAAAGAAAGAAGAAATGGAAAACAGAAAATCAGGTCTTAAATAGACAAAATGT
TCCTTTTGAAGACTATACAAGGCTTCAAAAAGACTAAAAGATATACAGAGAAGACATAATGAATTTGGA
AGTCTAATTTTGGTTCTAACATGCCTCCAACAGCATCTATCAATCCTGTTAGCTTTAGTCATCAGCCA
TGGTTCCAAGCATGGAACCTACATTTCTCTCATATGCAGGAGGAACAACATCAAGGGAACTCTCTCT
ACTTCGAAAAGACTAGAAGAACTGAAACAACACAAAAGAAAACAACCTAGAGGAACTTGGATCTTCCGGA
GAA

ACGCGTACGCGGCCGCTCGAGCAGAACTCATCTCAGAAGAGGATCTGGCAGCAAATGATATCCTGGATT
ACAAGGATGACGACGATAAGGTTTAA

Protein Sequence: >RC219987 representing NM_001042399
Red=Cloning site Green=Tags(s)

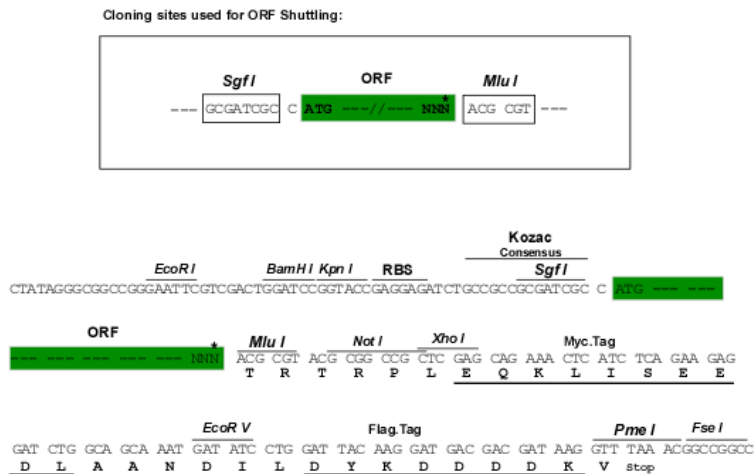
```
MVSTFTDMDTFPNNFPPGGDGLTGSQSEFQKMLIDERLRCEHHKANYQTLKAEHTRLQNEHVKLQNEL
KHLFNEKQTQQEKLQLLLEELRGELVEKTKDLEEMKLQILTPQKLELLRAQIQQELETMPRERFRNLDEE
VEKYRAVYNKLRYEHTFLKSEFEHQKEEYARILDEGKIKYESEIARLEEDKEELRNQLLNVDLTKDSKRV
EQLAREKYYLQKLGLEAEVAELKAEKENSEAQVENAQRIQVRQLAEMQATVRSLEAEKQSANLRAERL
EKELQSSSEQNTFLINKLHKAEREINTLSSKVLELKHNSKLEITDIKLETARAKSELERERNKIQSELDG
LQSDNEILKAAVEHHKVLLVEKDRELIRKVQAAKEEGYQKLVVLQDEKLELENRLADLEKMKVEHDVWRQ
SEKDQYEEKLRASQMAEEITRKELQSVRLKLQQQIVTIENAEKEKNENSDLKQQISSLQIQVTSLAQSEN
DLLNSNQMLKEMVERLKQECRNFRSQAQEAQLEAEKTLEEKQIQWLEEKHKLHERITDREKYNQAEKEL
QRAAIAQKKRSLHENLKLRLQEKVEVLEAKKEELETENQVLNRQNVPFEDYTRLQKRLKDIQRHNEFR
SLILVPMPTASINPVSFQSSAMVPSMELFPFPHMQEEHQRELSLLRKRLEELETTRKQLEELGSSG
E
```

TRTRPLEQKLISEEDLAANDILDYKDDDDKV

Chromatograms: https://cdn.origene.com/chromatograms/mk6487_f01.zip

Restriction Sites: SgfI-MluI

Cloning Scheme:



* The last codon before the Stop codon of the ORF

ACCN: NM_001042399

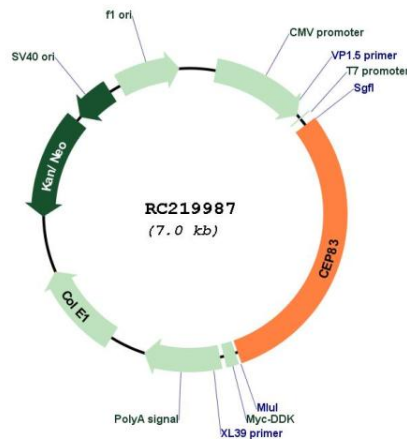
ORF Size: 2103 bp

OTI Disclaimer: The molecular sequence of this clone aligns with the gene accession number as a point of reference only. However, individual transcript sequences of the same gene can differ through naturally occurring variations (e.g. polymorphisms), each with its own valid existence. This clone is substantially in agreement with the reference, but a complete review of all prevailing variants is recommended prior to use. [More info](#)

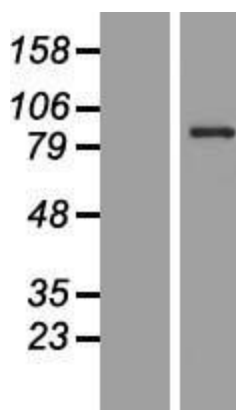
OTI Annotation: This clone was engineered to express the complete ORF with an expression tag. Expression varies depending on the nature of the gene.

Components:	The ORF clone is ion-exchange column purified and shipped in a 2D barcoded Matrix tube containing 10ug of transfection-ready, dried plasmid DNA (reconstitute with 100 ul of water).
Reconstitution Method:	<ol style="list-style-type: none">1. Centrifuge at 5,000xg for 5min.2. Carefully open the tube and add 100ul of sterile water to dissolve the DNA.3. Close the tube and incubate for 10 minutes at room temperature.4. Briefly vortex the tube and then do a quick spin (less than 5000xg) to concentrate the liquid at the bottom.5. Store the suspended plasmid at -20°C. The DNA is stable for at least one year from date of shipping when stored at -20°C.
RefSeq:	<u>NM_001042399.1</u> , <u>NP_001035858.1</u>
RefSeq Size:	3182 bp
RefSeq ORF:	2106 bp
Locus ID:	51134
UniProt ID:	<u>Q9Y592</u>
Cytogenetics:	12q22
MW:	82.8 kDa
Gene Summary:	The protein encoded by this gene is a centriolar protein involved in primary cilium assembly. Defects in this gene have been associated with infantile nephronophthisis and intellectual disability. [provided by RefSeq, Oct 2016]

Product images:



Circular map for RC219987



Western blot validation of overexpression lysate (Cat# [LY420877]) using anti-DDK antibody (Cat# [TA50011-100]). Left: Cell lysates from untransfected HEK293T cells; Right: Cell lysates from HEK293T cells transfected with RC219987 using transfection reagent MegaTran 2.0 (Cat# [TT210002]).