

Product datasheet for **RC219981**

RNF214 (NM_001077239) Human Tagged ORF Clone

Product data:

Product Type:	Expression Plasmids
Product Name:	RNF214 (NM_001077239) Human Tagged ORF Clone
Tag:	Myc-DDK
Symbol:	RNF214
Mammalian Cell Selection:	Neomycin
Vector:	pCMV6-Entry (PS100001)
E. coli Selection:	Kanamycin (25 ug/mL)



[View online »](#)

ORF Nucleotide
Sequence:

>RC219981 representing NM_001077239
Red=Cloning site Blue=ORF Green=Tags(s)

TTTTGTAATACGACTCACTATAGGGCGGCCGGGAATTCGTCGACTGGATCCGGTACCGAGGAGATCTGCC
GCC**CGCATCGCC**

ATGGCAGCGTCTGAGGTTGCTGGTGTGTGGCCAATGCCCCAGTCTCCGGAATCTTCTAGTTTATGTG
CTTCCAAATCAGACGAAGGTCTCCAGATGGTCTAAGCACCAAAGACTCTGCACAGAAGCAGAAGA
GCCTCTGTTGAGTGAAGTAGCCAAACAATAACCAAGGAGAATAACAGAAATGTCCATTTGGAGCACTCA
GAGCAGAACTCTGGTTCATCAGCAGGTGACACCTCAGCAGCGCACCAGGTGGTTTTAGGAGAAA
TAGCCACAGCCCTTTGTCTTTCTGGCAGTGGGTCTCAGTCTGATTTGAAGGATGTGGCCAGCAGCAGG
AGAGGAGGGGACACAAGCCTTCGGGAGAGCCTCCATCCAGTCACTCGGTCTCTTAAGGCAGGGTGC
ACTAAGCAGCTTGCTCCAGGAATTGCTCTGAAGAGAAATCCCCACAACCTCCATCTAAAGGAAGGTA
ACAGGGACACAAGCTTGGATTTCCGACCTGTAGTGTCTCCAGCAAATGGGGTTGAAGGAGTCCGAGT
TCAGGATGATGATCAAGATAGCTCTTCCCTGAAGCTTTCTCAGAACATTGCTGTACAGACTGACTTAA
ACAGCTGATTCAGAGGTAACACAGATCAAGATATTGAAAAGAATTTGGATAAAATGATGACAGAGAGAA
CCCTGTTGAAAGAGCGTTACCAGGAGGTCTGGACAAACAGAGGCAAGTGGAGAATCAGCTCCAAGTGCA
ATTAAGCAGCTTCAGCAAAGGAGAGAAGAGGAAATGAAGAATCACCGAGGATATTAAGGCTATTTCAG
GATGTGACAATAAAGCGGGAAGAAACAAGAAGAAGATAGAGAAAGAGAAGAAGGAGTTTTTGCAGAAGG
AGCAGGATCTGAAAGCTGAAATTTGAGAAGCTTTGTGAGAAGGGCAGAAGAGAGGTGTGGGAAATGGA
GGATAGACTCAAGAATCAGGATGGCGAAATAAATAGGAACATTATGGAAGAGACTGAACGGGCTGGAAG
GCAGAGATCTTACTACTAGAGAGCCGAAAGAGTTACTGGTACTGAACTAGAAGAAGCAGAAAAAGAGG
CAGAATTGCACCTTACTTACCTCAAGTCAACTCCCCAACACTGGAGACAGTTCGTTCCAACAGGAGTG
GGAGACGAGACTGAATGGAGTTCCGATAATGAAAAGAATGTTTCGTGACCAATTTAATAGTCATATCCAG
TTAGTGAGGAACGGAGCCAAGCTGAGCAGCCTTCTCAAATCCCTACTCCCACTTTACCTCCACCCCAT
CAGAGACAGACTTCATGCTTCAGGTGTTCAACCCAGTCCCTCTCTGGCTCCTCGGATGCCTTCTCCAT
TGGGCAGGTCACAATGCCATGGTTATGCCAGTGCAGATCCCCGCTCCTGTCTTTCCAATCCTGAAC
CCTGCCCTTTCCAGCCAGCCAGCCTTCTCACCCCTTCTGGCTCCCATGGCAGAAATAGCCCTGGCT
TGGGTTCCCTTGTGAGCCCCACGGTCCACACATGCCCCCTGCCGCTCCATCCACCTCCCCAGGCTT
GGGCGGTGTTAAGGCTTCTGCTGAACTCCCCGGCCCCAACCCAGTAGACAACTGGAGAAGATCCTGGAG
AAGCTGCTGACCCGTTCCACAGTGAATAAGGCCAGATGACCAACATTCTTCAGCAGATCAAGACAG
CAGTACCACCATGGCAGGCCTGACCATGGAGGAATTATCCAGTTGGTTGCTGCACGACTGGCAGAAC
TGAGCGGGTGGCAGCAAGTACTCAGCCACTTGGTTCGCATCCGGGCTTGTTCCTGCTCCACTGGCCAA
ATCAGTACCCCAATGTTCTTGCCTTCTGCCAAGTTTCATATCCTGGAAGGTCTTCACATGCTCCAGCCA
CCTGTAAGCTATGTCTAATGTGCCAGAACTCGTCCAGCCAGTGAAGTGCATCCAATGGCGTGTACCCA
TGATTGCACAAGGAGTGTATCAAATCTGGGCCAGACCAACACAAATGACACTGTCCCTTTGTCCA
ACTCTTAA

ACGCGTACGCGGCCGCTCGAGCAGAACTCATCTCAGAAGAGGATCTGGCAGCAAATGATATCCTGGATT
ACAAGGATGACGACGATAAGGTTTAA

Protein Sequence: >RC219981 representing NM_001077239
 Red=Cloning site Green=Tags(s)

MAASEVAGVVANAPSPPESSSLCASKSDEGLPDGLSTKDSAQKQKNSPLLSVSSQTITKENNRNVHLEHS
 EQNPGSSAGDTSAAHQVVLGENLIATALCLSGSGSQSDLKDVASTAGEEGDTSRESLHPVTRSLKAGCH
 TKQLASRNCSEEEKSPQTSILKEGNRDTSLDFRPVVSPANGVEGVRVDQDDDDQSSSLKLSQNIAVQTD
 FKTADSEVNTDQDIEKNLDKMMTERLLKERYQEVLDKQRQVENQLVQLKQLQQRREEEMKNHQEILKAIQ
 DVTIKREETKKKIEKKEFLQKEQDLKAEIEKLCEKGRREVWEMELDRLKNQDGEINRNIMEETERAWK
 AEILSLESRKELLVLKLEEAKEAELHLTYLKSTPPTLETVRSKQEWETRLNGVIRIMKKNVRDQFN
 SHIQ LVRNGAKLSSLPQIPTPTLPPPPSETDFMLQVFPSPSLAPRMPFSIGQVTMPMVMSADPRSL
 SFPILN PALSQSPQSSPLPGSHGRNSPGLGSLVSPHGHMPPAASIPPPPGLGGVKASAE
 TPRPQPVDKLEKILE KLLTRFPQCNAQMTNIIQQIKTARTTMAGL TMEELIQLVAARLAEHERVA
 ASTQPLGRIRALFPAPLAQ ISTPMFLPSAQVSYPRSSHAPATCKLCLMCQKLVQPS
 ELPMACTHVLHKECIKFWAQTNTNDTCFPC TLK

TRTRPLEQKLISEEDLAANDILDYKDDDDKV

Restriction Sites: SgfI-MluI

Cloning Scheme:

Cloning sites used for ORF Shuttling:



* The last codon before the Stop codon of the ORF

ACCN: NM_001077239

ORF Size: 2109 bp

OTI Disclaimer: The molecular sequence of this clone aligns with the gene accession number as a point of reference only. However, individual transcript sequences of the same gene can differ through naturally occurring variations (e.g. polymorphisms), each with its own valid existence. This clone is substantially in agreement with the reference, but a complete review of all prevailing variants is recommended prior to use. [More info](#)

OTI Annotation: This clone was engineered to express the complete ORF with an expression tag. Expression varies depending on the nature of the gene.

Components: The ORF clone is ion-exchange column purified and shipped in a 2D barcoded Matrix tube containing 10ug of transfection-ready, dried plasmid DNA (reconstitute with 100 ul of water).

- Reconstitution Method:**
1. Centrifuge at 5,000xg for 5min.
 2. Carefully open the tube and add 100ul of sterile water to dissolve the DNA.
 3. Close the tube and incubate for 10 minutes at room temperature.
 4. Briefly vortex the tube and then do a quick spin (less than 5000xg) to concentrate the liquid at the bottom.
 5. Store the suspended plasmid at -20°C. The DNA is stable for at least one year from date of shipping when stored at -20°C.

RefSeq: [NM_001077239.1](#), [NP_001070707.1](#)

RefSeq Size: 2695 bp

RefSeq ORF: 2112 bp

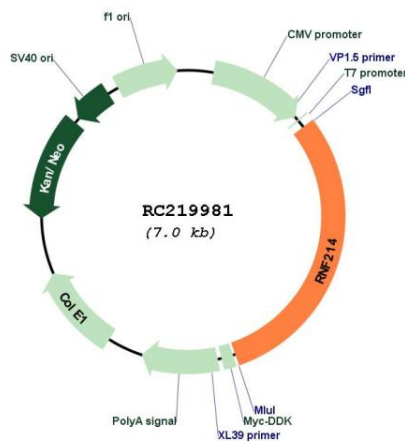
Locus ID: 257160

UniProt ID: [Q8ND24](#)

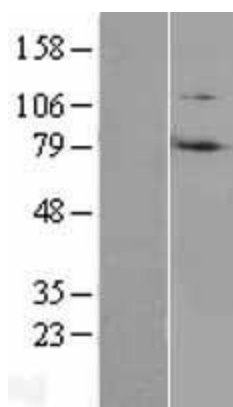
Cytogenetics: 11q23.3

MW: 77.5 kDa

Product images:



Circular map for RC219981



Western blot validation of overexpression lysate (Cat# [LY421388]) using anti-DDK antibody (Cat# [TA50011-100]). Left: Cell lysates from untransfected HEK293T cells; Right: Cell lysates from HEK293T cells transfected with RC219981 using transfection reagent MegaTran 2.0 (Cat# [TT210002]).