

Product datasheet for **RC219976**

PODXL (NM_001018111) Human Tagged ORF Clone

Product data:

Product Type:	Expression Plasmids
Product Name:	PODXL (NM_001018111) Human Tagged ORF Clone
Tag:	Myc-DDK
Symbol:	PODXL
Synonyms:	gp135; Gp200; PC; PCLP; PCLP-1; PDX; PODXL1
Mammalian Cell Selection:	Neomycin
Vector:	pCMV6-Entry (PS100001)
E. coli Selection:	Kanamycin (25 ug/mL)



[View online »](#)

ORF Nucleotide Sequence:

>RC219976 representing NM_001018111
 Red=Cloning site Blue=ORF Green=Tags(s)

TTTTGTAATACGACTCACTATAGGGCGGCCGGAATTCGTCGACTGGATCCGGTACCGAGGAGATCTGCC
 GCC**CGGATCGCC**

ATGCGCTGCGCGCTGGCGCTCTCGGCGTCTGCTACTGTGTGCAACGCCCGCTGCTGCCGTCGTCGC
 CGTCGCCGTCGCCGTCGCCCTCCAGAATGCAACCCAGACTACTACGGACTCATCTAACAAAACAGCACC
 GACTCCAGCATCCAGTGTCAACATCATGGCTACAGATACAGCCAGCAGACAGTCCCACTTCCAAG
 GCCAACGAAATCTTGGCCTCGGTCAAGGCGACCACCTTGGTGTATCCAGTGACTCACGGGGACTACAA
 CCCTGGCTCAGCAAGTCTCAGGCCAGTCAACACTACCGTGGCTAGAGGAGGCGGCTCAGGCAACCTAC
 TACCACCATCGAGAGCCCAAGAGCACAAAAAGTGCAGACACCACTACAGTTGCAACCTCCACAGCCACA
 GCTAAACCTAACACCACAAGCAGCCAGAATGGAGCAGAAGATAACAACAACTCTGGGGGAAAAGCAGCC
 ACAGTGTGACCACAGACCTCACATCCACTAAGGCAGAACATCTGACGACCCCTCACCTACAAGTCCACT
 TAGCCCCGACAACCCACTTCGACGCATCTGTGGCCACCCCAACAGCTCGGGACATGACCATCTTATG
 AAAATTTCAAGCAGTTCAAGCACTGTGGCTATCCCTGGCTACACCTTACAAGCCCGGGGATGACCACCA
 CCCTACTAGAGACAGTGTTCACCATGTGAGCCAGGCTGGTCTTGAACCTCTGACCTCGGGTGTCTGCC
 CACCTTGGCCTCCCAAAGTGTGGGATTACAGCGTTCATCGGTTATCTCGCAAAGAACTCAACAGACCTCC
 AGTCAGATGCCAGCCAGCTCTACGGCCCTTCTCCAGGAGACAGTGCAGCCACGAGCCCGGCAACGG
 CATTGAGAACACCTACCTGCCAGAGACCATGAGCTCCAGCCCCACAGCAGCATCAACTACCCACCGATA
 CCCCAAAACACCTTCTCCACTGTGGCTCATGAGAGTAACTGGGCAAAGTGTGAGGATCTTGAGACACAG
 ACACAGAGTGAGAAGCAGCTCGTCTGAACCTCACAGGAAACACCTCTGTGACGGGGCGCTTCGGATG
 AGAAATTGATCTCACTGATATGCCGAGCAGTCAAAGCCACCTTCAACCCGGCCAAAGATAAGTCCGGC
 ACGGCTGGCATCTGTTCCAGGAAGTCAGACCGTGGTCTGTCAAAGAAATCACTATTACACTAAGCTCCCT
 GCCAAGGATGTGTACGAGCGGCTGAAGGACAAATGGGATGAACTAAAGGAGGCAGGGTCACTGACATGA
 AGCTAGGGGACCAGGGGCCACGGAGGAGGCGGAGGACCGCTTACAGATGCCCTCATCATCACCATCGT
 CTGCATGGCATATTCTGCTCCTCGTGGCGCCCTCTATGGCTGCTGCCACCAGCGCTCTCCAGAGG
 AAGGACCAGCAGCGGCTAACAGAGGAGCTGCAGACAGTGGAGAATGGTTACCATGACAACCCAACACTGG
 AAGTGTGAGACCTCTTCTGAGATGCAGGAGAAGAAGTGGTCAAGCTCAACGGGGAGCTGGGGGACAG
 CTGGATCGTCCCTCTGGACAACCTGACCAAGGACGACCTGGATGAGGAGGAAGACACACACCTC

ACGCGTACGCGGCCGCTCGAGCAGAAACTCATCTCAGAAGAGGATCTGGCAGCAAATGATATCTGGATT
 ACAAGGATGACGACGATAAGGTTTAA

Protein Sequence:

>RC219976 representing NM_001018111
 Red=Cloning site Green=Tags(s)

MRCALALSALLLLSTPPLLSSPSPSPSQNATQTTTDSNKTAPTPASSVTIMATDQAQSTVPTSK
 ANEILASVKATTLGVSSDSPGTTTAAQQVSGPVNTTVARGGSGNPTTTIESPKSTKSADTTTATSTAT
 AKPNTTSSQNGAEDTTNSGGKSSHVTTDLTSTKAEHLTPHPTSPLSPRQPTSTHPVATPTSSGHDLH
 KISSSSSTVAIPGYFTSPGMTTLLLETVFHHVSQAGLELLTSGDLPTLASQSAGITASSVISQRTQTS
 SQMPASSTAPSSQETVQPTSPATALRTPPLPETMSSSPTAASTTHRYPKTPSPTVAHESNWKCEDLETQ
 TQSEKQLVLNLGNTLCAGGASDEKLISLICRAVKATFNPAQDKCGIRLASVPGSQTVVVEITIHKL
 AKDVYERLKDWDDELKEAGVSDMKLGDQGPPEEAEDRFSMPLIITIVCMASFLLVAALYGCCHQRLSQR
 KDQQRLEELQTVENGYHDNPTLEVMEETSSEMKEKVVSLNGELGDSWIVPLDNLTKDDLDEEEDTHL

TRTRPLEQKLISEEDLAANDILDYKDDDDKV

Chromatograms:

https://cdn.origene.com/chromatograms/mg3822_e01.zip

Restriction Sites:

Sgfl-Mlul

Cloning Scheme:


ACCN: NM_001018111

ORF Size: 1674 bp

OTI Disclaimer: The molecular sequence of this clone aligns with the gene accession number as a point of reference only. However, individual transcript sequences of the same gene can differ through naturally occurring variations (e.g. polymorphisms), each with its own valid existence. This clone is substantially in agreement with the reference, but a complete review of all prevailing variants is recommended prior to use. [More info](#)

OTI Annotation: This clone was engineered to express the complete ORF with an expression tag. Expression varies depending on the nature of the gene.

Components: The ORF clone is ion-exchange column purified and shipped in a 2D barcoded Matrix tube containing 10ug of transfection-ready, dried plasmid DNA (reconstitute with 100 ul of water).

Reconstitution Method:

1. Centrifuge at 5,000xg for 5min.
2. Carefully open the tube and add 100ul of sterile water to dissolve the DNA.
3. Close the tube and incubate for 10 minutes at room temperature.
4. Briefly vortex the tube and then do a quick spin (less than 5000xg) to concentrate the liquid at the bottom.
5. Store the suspended plasmid at -20°C. The DNA is stable for at least one year from date of shipping when stored at -20°C.

RefSeq: [NM_001018111.3](#)

RefSeq Size: 5999 bp

RefSeq ORF: 1677 bp

Locus ID: 5420

UniProt ID: [O00592](#)

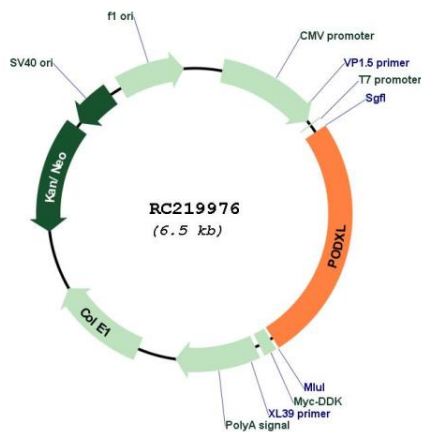
Cytogenetics: 7q32.3

Protein Families: Transmembrane

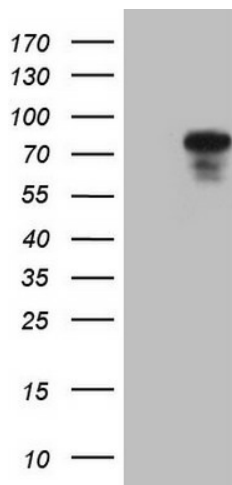
MW: 58.64 kDa

Gene Summary: This gene encodes a member of the sialomucin protein family. The encoded protein was originally identified as an important component of glomerular podocytes. Podocytes are highly differentiated epithelial cells with interdigitating foot processes covering the outer aspect of the glomerular basement membrane. Other biological activities of the encoded protein include: binding in a membrane protein complex with Na⁺/H⁺ exchanger regulatory factor to intracellular cytoskeletal elements, playing a role in hematopoietic cell differentiation, and being expressed in vascular endothelium cells and binding to L-selectin. [provided by RefSeq, Jul 2008]

Product images:



Circular map for RC219976



HEK293T cells were transfected with the pCMV6-ENTRY control (Cat# [PS100001], Left lane) or pCMV6-ENTRY PODXL (Cat# RC219976, Right lane) cDNA for 48 hrs and lysed. Equivalent amounts of cell lysates (5 ug per lane) were separated by SDS-PAGE and immunoblotted with anti-PODXL (Cat# [TA807750])(1:2000).