

Product datasheet for RC219975

LASP1 (NM_006148) Human Tagged ORF Clone

Product data:

Product Type:	Expression Plasmids
Product Name:	LASP1 (NM_006148) Human Tagged ORF Clone
Tag:	Myc-DDK
Symbol:	LASP1
Synonyms:	Lasp-1; MLN50
Mammalian Cell Selection:	Neomycin
Vector:	pCMV6-Entry (PS100001)
E. coli Selection:	Kanamycin (25 ug/mL)
ORF Nucleotide Sequence:	>RC219975 representing NM_006148 Red=Cloning site Blue=ORF Green=Tags(s)

TTTTGTAATACGACTCACTATAGGGCGCCGGGAATTCGTCGACTGGATCCGGTACCGAGGAGATCTGCC
GCC**CGATCGCC**

ATGAACCCCAACTGCGCCCGGTGCGGCAAGATCGTGTATCCACGGAGAAGGTGAACTGTCTGGATAAGT
TCTGGCATAAAGCATGCTTCCATTGCGAGACCTGCAAGATGACTGAACATGAAGAACTACAAGGGCTA
CGAGAAGAAGCCCTACTGCAACGCACACTACCCCAAGCAGTCCTTACCATGGTGGCGGACACCCCGGAA
AACCTTCGCCTCAAGCAACAGAGTGAGCTCCAGAGTCAGGTGCGCTACAAGGAGGAGTTTGAGAAGAACA
AGGGCAAAGGTTTCAGCGTAGTGGCAGACACGCCCGAGCTCCAGAGAATCAAGAAGACCCAGGACCAGAT
CAGTAACATAAAATACCATGAGGAGTTTGAGAAGAGCCGATGGGCCCTAGCGGGGGCGAGGGCATGGAG
CCAGAGCGTCGGGATTCACAGGACGGCAGCAGCTACCGGCGGCCCTGGAGCAGCAGCAGCTCACCACA
TCCCGACCACTGCCCCGTTTACCAGCAGCCCCAGCAGCAGCCGGTGGCCAGTCTATGGTGGCTACAA
GGAGCTCGAGCCCCAGTCTCCATACAGCGCAGCGCCCCAGGTGGTGGCGGGAAGCGGTACCGCGCGGTG
TATGACTACAGCGCCCGCAGCAGGACGAGGTCTCCTTCCAGGACGGGGACACCATCGTCAACGTGCAGC
AGATCGACGACGGCTGGATGTACGGGACGGTGGAGCGCACCGGCGACACGGGGATGCTGCCGGCCAACTA
CGTGGAGGCCATC

ACGCGTACGCGGCCGCTCGAGCAGAAACTCATCTCAGAAGAGGATCTGGCAGCAAATGATATCCTGGATT
ACAAGGATGACGACGATAAGGTTTAA



[View online »](#)

Protein Sequence: >RC219975 representing NM_006148
 Red=Cloning site Green=Tags(s)

MNPNCARCGKIVYPTKVNCLDKFHHKACFHCETCKMTLNMKNYKGYEKKPYCNAHPKQSFMTMVAADTPE
 NLRRLKQQSELQSQVRYKEEFKKNKGKGF SVVADTPELQRIKKTQDQISNIKYHEEFKSRMGPSGGEGME
 PERRDSQDGSYRRPLEQQPHHIPT SAPVYQQPQQPVAQSYGGYKEPAAPVSIQRSAPGGGGKRYRAV
 YDYSAADEVVSFQDGTIVNVQQIDDGWMYGTVERTGDTGMLPANYVEAI

TRTRPLEQKLISEEDLAANDILDYKDDDDKV

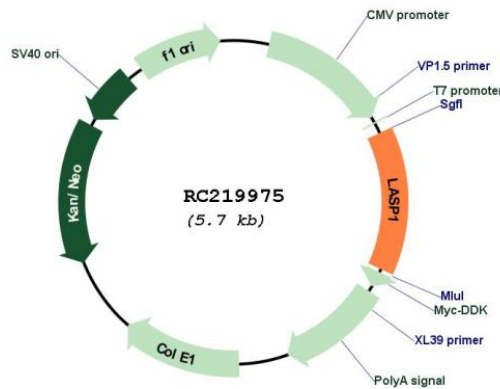
Chromatograms: https://cdn.origene.com/chromatograms/mk6493_f09.zip

Restriction Sites: SgfI-MluI

Cloning Scheme:



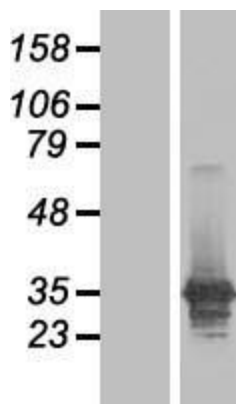
Plasmid Map:



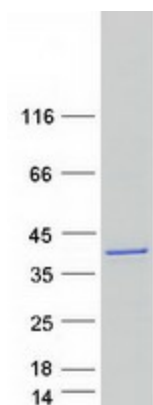
ACCN: NM_006148

ORF Size: 783 bp

OTI Disclaimer:	The molecular sequence of this clone aligns with the gene accession number as a point of reference only. However, individual transcript sequences of the same gene can differ through naturally occurring variations (e.g. polymorphisms), each with its own valid existence. This clone is substantially in agreement with the reference, but a complete review of all prevailing variants is recommended prior to use. More info
OTI Annotation:	This clone was engineered to express the complete ORF with an expression tag. Expression varies depending on the nature of the gene.
Components:	The ORF clone is ion-exchange column purified and shipped in a 2D barcoded Matrix tube containing 10ug of transfection-ready, dried plasmid DNA (reconstitute with 100 ul of water).
Reconstitution Method:	<ol style="list-style-type: none">1. Centrifuge at 5,000xg for 5min.2. Carefully open the tube and add 100ul of sterile water to dissolve the DNA.3. Close the tube and incubate for 10 minutes at room temperature.4. Briefly vortex the tube and then do a quick spin (less than 5000xg) to concentrate the liquid at the bottom.5. Store the suspended plasmid at -20°C. The DNA is stable for at least one year from date of shipping when stored at -20°C.
RefSeq:	NM_006148.4
RefSeq Size:	3846 bp
RefSeq ORF:	786 bp
Locus ID:	3927
UniProt ID:	Q14847
Cytogenetics:	17q12
Domains:	NEBU, SH3, LIM
Protein Families:	Druggable Genome
MW:	29.5 kDa
Gene Summary:	This gene encodes a member of a subfamily of LIM proteins, characterized by a LIM motif and a domain of Src homology region 3, and also a member of the nebulin family of actin-binding proteins. The encoded protein is a cAMP and cGMP dependent signaling protein and binds to the actin cytoskeleton at extensions of the cell membrane. The encoded protein has been linked to metastatic breast cancer, hematopoietic tumors such as B-cell lymphomas, and colorectal cancer. [provided by RefSeq, Oct 2012]

Product images:

Western blot validation of overexpression lysate (Cat# [LY416835]) using anti-DDK antibody (Cat# [TA50011-100]). Left: Cell lysates from untransfected HEK293T cells; Right: Cell lysates from HEK293T cells transfected with RC219975 using transfection reagent MegaTran 2.0 (Cat# [TT210002]).



Coomassie blue staining of purified LASP1 protein (Cat# [TP319975]). The protein was produced from HEK293T cells transfected with LASP1 cDNA clone (Cat# RC219975) using MegaTran 2.0 (Cat# [TT210002]).