

## Product datasheet for RC219970

### C17orf102 (NM\_207454) Human Tagged ORF Clone

#### Product data:

**Product Type:** Expression Plasmids  
**Product Name:** C17orf102 (NM\_207454) Human Tagged ORF Clone  
**Tag:** Myc-DDK  
**Symbol:** C17orf102  
**Synonyms:** FLJ44815  
**Mammalian Cell Selection:** Neomycin  
**Vector:** pCMV6-Entry (PS100001)  
**E. coli Selection:** Kanamycin (25 ug/mL)  
**ORF Nucleotide Sequence:** >RC219970 ORF sequence  
Red=Cloning site Blue=ORF Green=Tags(s)

TTTTGTAATACGACTCACTATAGGGCGCCGGGAATTCGTCGACTGGATCCGGTACCGAGGAGATCTGCC  
GCC**CGATCGCC**

ATGTTTGAATTTTCTTCCCAACGCCGGCTAGCGCTGGGACCCGAATGGGGCCGGCCAGCTGCGCGGGA  
GGAGCCTCCACCTCCCTCAGCTGCGTTTCTCCAGGGTAGACGCCACCGCAGTCACTGATGCCCTTTTCA  
AAGGATGCACGCTCCCCACGGGCGCCGGAGGTGTTTTGCAGCCGCTCTCCAGAGGCGCGGTAGGGG  
CACCTACCCCCACCCAGAGTTCGCTGGGCACTGGTGGGAATCAGCCTCGTGTGCCAGCTCC  
TCTCGGGCGCGGGGCTCTGGGCTCAGCTTCGTGCGGGATGGTCCGGGGCGCAGCTGTGGAAACCT  
ATTTATTCTGTTGCTGGGAAGGAAGACGGAGAAGAGGAGGGGACAGTGCTTTCTACAGTAGTATGGTG  
CATATCTCCAACATCACAGGCATTGTAGGTACAACAGTGAGCAGGACAAAACAGCTCTGTCTCATGG  
AACTAACTTTC

**ACGCGT**ACGCGGCCGCTCGAGCAGAACTCATCTCAGAAGAGGATCTGGCAGCAAATGATATCCTGGATT  
ACAAGGATGACGACGATAAGGTTTAA

**Protein Sequence:** >RC219970 protein sequence  
Red=Cloning site Green=Tags(s)

MFDFSFTPASAGTRMGPASCGGRSLHLPQLRFSRVDATAVTDVFPQRMHAPHRAPEVFCSSRSGAGRG  
HPTPTPRVRWALAGNQPRCAQLLSGRGGGAQLRAGWVRGA AVGNLFILLGKEDGEEEGTVLSYSSMV  
HISNITGIVGTTVSRTKPALVLMELTF

**TRTRPLEQKLISEEDLAANDILDYKDDDDKV**

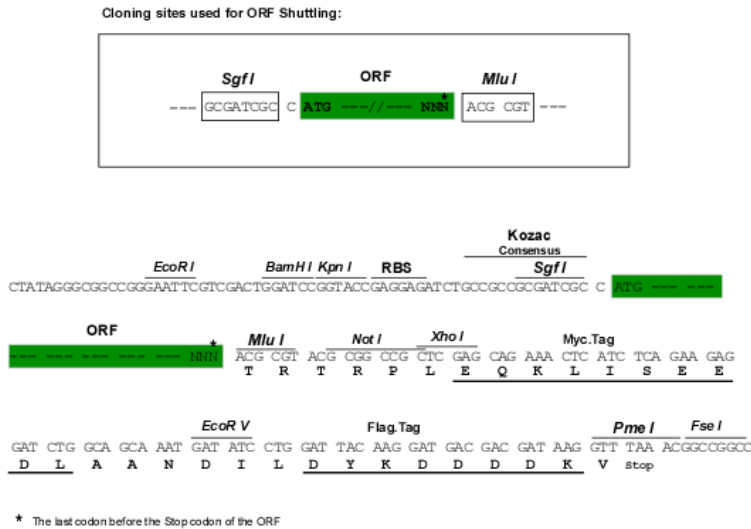
**Chromatograms:** [https://cdn.origene.com/chromatograms/mk6471\\_h12.zip](https://cdn.origene.com/chromatograms/mk6471_h12.zip)



[View online »](#)

Restriction Sites: SgfI-MluI

Cloning Scheme:



ACCN: NM\_207454

ORF Size: 504 bp

OTI Disclaimer: The molecular sequence of this clone aligns with the gene accession number as a point of reference only. However, individual transcript sequences of the same gene can differ through naturally occurring variations (e.g. polymorphisms), each with its own valid existence. This clone is substantially in agreement with the reference, but a complete review of all prevailing variants is recommended prior to use. [More info](#)

OTI Annotation: This clone was engineered to express the complete ORF with an expression tag. Expression varies depending on the nature of the gene.

Components: The ORF clone is ion-exchange column purified and shipped in a 2D barcoded Matrix tube containing 10ug of transfection-ready, dried plasmid DNA (reconstitute with 100 ul of water).

Reconstitution Method:

1. Centrifuge at 5,000xg for 5min.
2. Carefully open the tube and add 100ul of sterile water to dissolve the DNA.
3. Close the tube and incubate for 10 minutes at room temperature.
4. Briefly vortex the tube and then do a quick spin (less than 5000xg) to concentrate the liquid at the bottom.
5. Store the suspended plasmid at -20°C. The DNA is stable for at least one year from date of shipping when stored at -20°C.

RefSeq: [NM\\_207454.2](#), [NP\\_997337.2](#)

RefSeq Size: 3997 bp

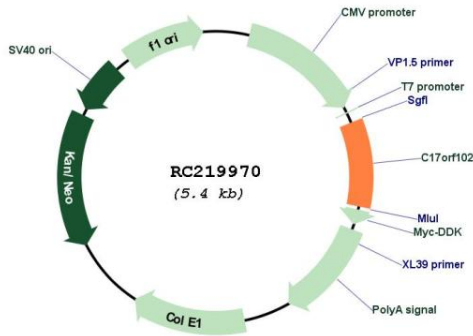
RefSeq ORF: 504 bp

Locus ID: 400591

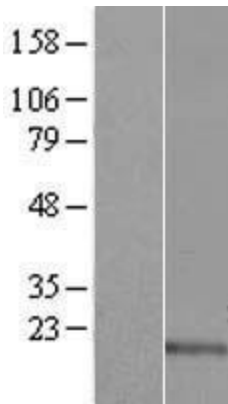
Cytogenetics: 17q12

MW: 17.8 kDa

**Product images:**



Circular map for RC219970



Western blot validation of overexpression lysate (Cat# [LY404040]) using anti-DDK antibody (Cat# [TA50011-100]). Left: Cell lysates from untransfected HEK293T cells; Right: Cell lysates from HEK293T cells transfected with RC219970 using transfection reagent MegaTran 2.0 (Cat# [TT210002]).