

## Product datasheet for RC219966

### EIF4G1 (NM\_198244) Human Tagged ORF Clone

#### Product data:

**Product Type:** Expression Plasmids  
**Product Name:** EIF4G1 (NM\_198244) Human Tagged ORF Clone  
**Tag:** Myc-DDK  
**Symbol:** EIF4G1  
**Synonyms:** EIF-4G1; EIF4F; EIF4G; EIF4GI; P220; PARK18  
**Vector:** pCMV6-Entry (PS100001)  
**E. coli Selection:** Kanamycin (25 ug/mL)  
**Cell Selection:** Neomycin  
**ORF Nucleotide Sequence:** >RC219966 representing NM\_198244  
Red=Cloning site Blue=ORF Green=Tags(s)

TTTTGTAATACGACTCACTATAGGGCGGCCGGAATTCGTCGACTGGATCCGGTACCGAGGAGATCTGCC  
GCCGCGATCGCC

ATGATGATCCCTCCAGATCTCTACCCAGCCTCCCAGGGGCCTACTACATCCCTGGACAGGGCGTT  
 CCACATACGTTGTCCCGACACAGCAGTACCCTGTGCAGCCAGGAGCCCCAGGCTTCTATCCAGGTGCAAG  
 CCCTACAGAATTTGGGACCTACGCTGGCGCTACTATCCAGCCCAAGGGGTGCAGCAGTTTCCCACTGGC  
 GTGGCCCCCGCCCGATTTTGTGTAACAGCCACCCAGATTGCTCCCAAGAGGGAGCGTAAGACGATCC  
 GAATTCGAGATCCAAACCAAGGAGGAAAGGATATCACAGAGGAGATCATGTCTGGGGCCCGCACTGCCTC  
 CACACCCACCCCTCCCCAGACGGGAGGCGGTCTGGAGCCTCAAGCTAATGGGGAGACGCCCCAGGTTGCT  
 GTCATTGTCCGGCCAGATGACCGGTACAGGGAGCAATCATTGCTGACCGGCCAGGGCTGCCTGGCCAG  
 AGCATAGCCCTTCAGAATCCCAGCCTTCGTCGCTTCTCCGACCCATCACCATCCCCAGTCTTGAACC  
 GGGGTCTGAGCCTAATCTCGCAGTCTCTATTCTGGGGACTATGACAATAACAATGTCTGTA  
 GAAGAATCAACCCCATCTCCCGTGAACCTGGGAGCCATATCGCCTCTCTCCAGAACCCTCTCTCG  
 CGAACCATACTGGAAGTGAAGTGACACTTAGCAAACCGGTTCCAGAATCTGAGTTTTCTTCCAGTCC  
 TCTCCAGGCTCCACCCCTTTGGCATCTCACACAGTGAAATTCATGAGCCTAATGGCATGGTCCCATCT  
 GAAGATCTGGAACCAGAGGTGGAGTCAAGCCAGAGCTTGCTCCTCCCCAGCTTGCCCTCCGAATCCC  
 CTGTGCCATTGCTCCAACCTGCCAACCTGAGGAACTGCTCAACGGAGCCCCCTCGCCACCAGCTGTGGA  
 CTTAAGCCAGTCAGTGAGCCAGAGGAGCAGGCCAAGGAGGTGACAGCATCAATGGCGCCCCCACCATC  
 CCCTCTGCTACTCCAGTACGGCTCCTTACGTAATCTCCAGCTCAGGAGGAGGAAATGGAAGAAGAAG  
 AAGAAGAGGAAGAAGGAGAAGCAGGAGAAGCAGGAGAAGCTGAGAGTGAGAAAGGAGGAGGAACTGCT  
 CCCCCAGAGGTACCCCTATTCCAGCCAACTTGTCTCAGAATTTGGAGGCAGCAGCAGCCACTCAAGTG  
 GCAGTATCTGTGCAAAGAGGAGACGGAATAAAGGAGCTAAATAAGAAGGAGGCTGTTGGAGACCTTC  
 TGGATGCCTTCAAGGAGCGAACCCGGCAGTACCAGAGGTGAAAATCAGCCTCCTGCAGGCAGCAATCC  
 AGGCCAGAGTCTGAGGGCAGTGGTGTGCCCCACGTCCTGAGGAAGCAGATGAGACCTGGGACTCAAAG  
 GAAGACAAAATTCACAATGCTGAGAATCCAGCCCGGGAACAGAAGTATGAATATAAGTCAGATCAGT



GGAAGCCTCTAAACCTAGAGGAGAAAAACGTTACGACCGTGAGTTCCTGCTTGGTTTTAGTTCATCTT  
 TGCCAGTATGCAGAAGCCAGAGGGATTGCCACATATCAGTGACGTGGTGTGGACAAGGCCAATAAAACA  
 CCACTGCGGCCACTGGATCCCCTAGACTACAAGGCATAAATTGTGGCCAGACTTCACTCCATCCTTTG  
 CCAACCTTGGCCGGACAACCTTAGCACCCGTGGGCCCAAGGGGTGGCCAGGTGGGGAGCTGCCCGG  
 TGGGCCGGCTGGCTGGGACCCCGCGCTCTCAGCAGGGACCCGAAAAGAACCACGCAAGATCATTGCC  
 ACAGTGTAAATGACCGAAGATATAAACTGAACAAAGCAGAGAAAAGCCTGAAACCCAGCAGCAAGCGGA  
 CGGCGGTGATAAGGATCGAGGGGAAGAAGATGCTGATGGCAGCAAAACCCAGGACCTATTCCGACGGT  
 GCGTCCATCCTGAATAAACTGACACCCAGATGTTCCAGCAGCTGATGAAGCAAGTGACGACGCTGGCC  
 ATCGACACCGAGGAACGCCTCAAAGGGTCAATTGACCTCATTGTTGAGAAGGCCATTTGAGACGCCAACT  
 TCTCTGTGGCCTATGCCAACATGTGCCGCTGCCTCATGGCGTGAAGTGCCTACGAAAAGCCAAC  
 AGTGACTGTGAACCTCCGAAAGCTGTTGTTGAATCGATGTCAGAAGGAGTTTGAAGAACAAAGATGAT  
 GATGAGTTTTTGAAGAAGCAAAAAGAGATGGATGAAGCTGCTACGGCAGAGGAACGAGGACGCCTGA  
 AGGAAGAGCTGGAAGAGGCTCGGACATAGCCCGCGCGCTCTTAGGGAATATCAAGTTTATTGGAGA  
 GTTGTCAAACCTGAAGATGTTAACAGAGGCAATAATGCATGACTGTGTGGTCAAACCTGCTTAAGAACCAT  
 GATGAAGAGTCCCTTGAGTGCCTTTGTCGTCTGCTCACCACCATTGGCAAAGACCTGGACTTTGAAAAG  
 CCAAGCCCGAATGGATCAGATTTCAACCAGATGGAAAAATCATTAAAGAAAAGAACGCTCATCCCG  
 CATCCGCTTATGCTGCAGGACGTGCTGGATCTGCGAGGGAGCAATTGGGTGCCACGCCGAGGGGATCAG  
 GGTCCCAAGACCTTACCCAGATCCATAAGGAGGCTGAGATGGAAGAATCGAGAGCACATCAAAGTGC  
 AGCAGCTCATGGCCAAGGGCAGTGACAAGCGTGGGGCGGTCTCCAGGCCCTCCATCAGCCGTGGACT  
 TCCCTTGTGGATGATGGTGGCTGGAACACAGTCCCATCAGCAAAGGTAGCCGCCCATTTGACACCTCA  
 CGACTACCAAGATCACCAAGCCTGGCTCCATCGATTCTAACACACAGCTCTTTCACCTGGAGGGCGAC  
 TGAGTGGGGCAAGGGCAGCAGCGGAGGCTCAGGAGCAAGCCCTCAGACGCAGCATCAGAAGCTGCTCG  
 CCAGCTACTAGTACTTTGAATCGCTTTCAGCCCTTCAACAAGCGGTACCCACAGAAAGCACAGATAAT  
 AGACGTGTGGTGCAGAGGAGTAGCTTGAAGCCGAGAACGAGCGAGAAAAGCTGGAGACCGAGGAGCCGCC  
 TAGAGCGGAGTGAACGGGGAGGGACCGTGGGGACCGCTTATGCTGCGCGGACACCTGCTACCAAGCG  
 GAGCTTACGAAGGAAGTGGAGGAGCGGAGTAGAGAACGGCCCTCCAGCCTGAGGGGCTGCGCAAGGCA  
 GCTAGCCTCACGGAGGATCGGGACCGTGGGCGGGATGCCGTGAAGCGAGAAGTGCCTACCCCCAGTGA  
 GCCCCTGAAGGCGGCTCTCTCTGAGGAGGAGTTAGAGAAGAAATCCAAGGCTATCATTGAGGAATATCT  
 CCATCTCAATGACATGAAAGAGGCAGTCCAGTGCCTGCAGGAGCTGGCCTCACCTCCTTGTCTTCATC  
 TTTGTACGGCATGGTGTGAGTCTACGCTGGAGCGCAGTGCCTTGTCTGAGCATATGGGGCAGCTGC  
 TGCACCAGCTGCTGTGCTGGCATCTGTCTACTGCTCAGTACTACCAAGGGTTGATGAAATCTTGGA  
 ATTGGCTGAGGACATGGAATTGACATCCCCAGGTGGCTCTACCTAGCGGAAGTGGTAAACCCATT  
 CTGCAGGAAGGTGGGGTGCCTGGGGGAGCTGTTCAAGGAGATTACAAAGCCTCTGAGACCGTTGGGCA  
 AAGCTGCTCCCTGTTGCTGGAGATCCTGGGCCTCCTGTGCAAAAGCATGGGTCTAAAAAGTGGGGAC  
 GCTGTGGCGAGAAGCCGGGCTTAGCTGGAAGGAATTTCTACCTGAAGGCCAGGACATTGGTGCAATTCGTC  
 GCTGAACAGAAGGTGGAGTATACCCTGGGAGAGGAGTGGAAAGCCCTGGCCAGAGGGCACTCCCTCCG  
 AGGAGCTGAACAGGCAGCTGGAGAAGCTGCTGAAGGAGGGCAGCAGTAAACAGCGGTGTTGACTGGAT  
 AGAGGCCAACCTGAGTGAGCAGCAGATAGTATCCAACACGTTAGTTCGAGCCCTCATGACGGCTGTCTGC  
 TATTCTGCAATTAATTTTGGAGTCCCCTCCGAGTGGAGTGGAGTGGAGTGGAGTGGAGTGGAGTGGAGT  
 TGCAGAAATACCTGTGTGACGAGCAGAAGGAGCTACAGGCGCTCTACGCCCTCCAGGCCCTTGTAGTGAC  
 CTTAGAACAGCCTCCCAACCTGCTGCGGATGTTCTTTGACGCACTGTATGACGAGGACGTTGTAAGGAG  
 GATGCCTTCTACAGTTGGGAGAGTAGCAAGGACCCCGCTGAGCAGCAGGGCAAGGGTGTGGCCCTTAAAT  
 CTGTCACAGCCTTCTTCAAGTGGCTCCGTGAAGCAGAGGAGGAGTCTGACCACAAC

ACGCGTACGCGGCCGCTCGAGCAGAACTCATCTCAGAAGAGGATCTGGCAGCAATGATATCCTGGATT  
 ACAAGGATGACGACGATAAGGTTTAA

**Protein Sequence:** >RC219966 representing NM\_198244  
 Red=Cloning site Green=Tags(s)

```

MMIPSQISYPASQGAYYIPGQGRSTYVVPTQQYPVQPGAPGFYPGASPTTEFGTYAGAYYPAQGVQQFPTG
VAPAPVLMNQPPQIAPKRERKTIIRIDPNQGGKDIITEIMSGARTASTPTPPQTGGGLEPQANGETPQVA
VIVRPDDRSQGAIIADRPGLPGPEHSPSESQPSSPSTPSPVLEPGSEPNLAVLSIPGDTMTTIQMSV
EESTPISRETGEPYRLSPEPTPLAEPILVEVTL SKVPPESEFSSSPLQAPTPLASHTVEIHEPNGMVPS
EDLEPEVESSPELAPPPACPSESPVPIAPTAQPEELLNGAPSPPAVDLSPVSEPEEQAKEVTASMAPPTI
PSATPATAPSATSPAQEEEMEEEEEEEEGEAGEAGEAESEKGGEE LLPPESTPIPANLSQNLEAAAATQV
AVSVPKRRRIKELNKKEAVGDLDDAFKEANPAVPEVENQPPAGSNPGPESESGVPPRPEEADETWDISK
EDKIHNAENIQGEQKYEYKSDQWKPLNLEEKRYDREFLLGFQFIFASMQKPEGLPHISDVVLDKANKT
PLRPLDPTLQGINCGPDFTPSFANLGRITLSTRGPPRGGPGGELPRGPAGLGPRRSQQGPRKEPRKIIA
TVLMTEDIKLNKAEKAWKPSKRRTAADKDRGEEDADGSKTQDLFRRVRSILNKLTPQMFQQLMKQVTQLA
IDTEERLKGVIDLIFEKAISEPNF SVAYANMCRCLMALKVPTTEKPTVTNFRKLLLNRQKQEFKDKDD
DEVFEKKQKEMDEAATAEERGRLEKEEARDIARRRSLGNIKF IGELFKLKL TEAIMHDCVVKLLKNH
DEESLECLCRLLTTIGKDLDFEKAKPRMDQYFNQMEKIKKEKTSRIRFMLQDVLDLRGSNWVPRRGDQ
GPKTIDQIHKEAEMEEHREHIKVVQLMAKGS DKRRGGPPGPPISRGLPLVDDGGWNTVPI SKGSRPIDTS
RLTKITKPGSIDSNNQLFAPGGRLSWGKSSGGSGAKPSDAASEAARPATSTLNRF SALQQAVPTESTDN
RRVQVQSSLSRERGEKAGDRGDRLESERGGDRGDRLDARTPATKRSFSKEVEERSRERPSQPEGLRKA
ASLTEDRDRGRDAVKREALPPVSPLKAL SEEELEKSKAIEEYLHLNDMKEAVQCVQELASPSLLFI
FVRHGVESTLERSAIAREHMQLLHQLLCAGHLSTAQYYQGLYEILELAEDMEIDIPHWLYLAELVPTI
LQEGGVPMGELFREITKPLRPLGKAASLLLEILGLLCKSMGPKKVGTLWREAGLSWKEFLPEGQDIGAFV
AEQKVEYTLGEESEAPGQRALPSEELNRQLEKLLKEGSSNQRFVDWIEANLSEQQIVSNTLVRALMTAVC
YSAIIFETPLRVDVAVLKARAKLLQKYLCEQKELQALYALQALVVTLEQPPNLLRMFFDALYDEVDVYKE
DAFYSWESSKDPAEQQKGVALKSVTAFFKWLREAEESDHN
  
```

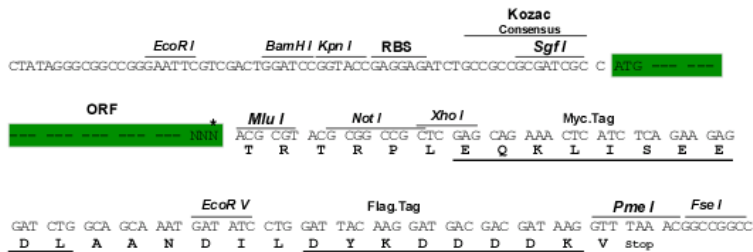
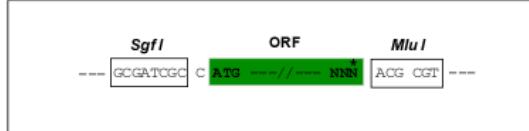
TRTRPLEQKLISEEDLAANDILDYKDDDDKV

**Restriction Sites:**

SgfI-MluI

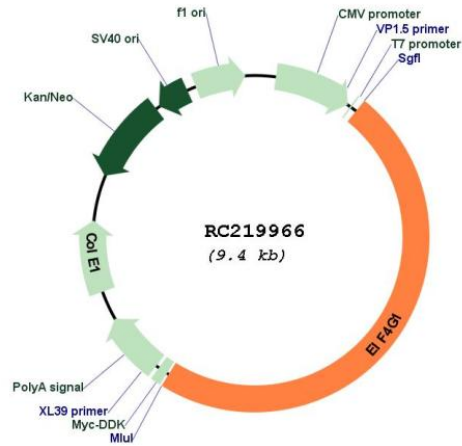
**Cloning Scheme:**

Cloning sites used for ORF Shuttling:



\* The last codon before the Stop codon of the ORF

## Plasmid Map:



ACCN: NM\_198244

ORF Size: 4536 bp

OTI Disclaimer: The molecular sequence of this clone aligns with the gene accession number as a point of reference only. However, individual transcript sequences of the same gene can differ through naturally occurring variations (e.g. polymorphisms), each with its own valid existence. This clone is substantially in agreement with the reference, but a complete review of all prevailing variants is recommended prior to use. [More info](#)

OTI Annotation: This clone was engineered to express the complete ORF with an expression tag. Expression varies depending on the nature of the gene.

Components: The ORF clone is ion-exchange column purified and shipped in a 2D barcoded Matrix tube containing 10ug of transfection-ready, dried plasmid DNA (reconstitute with 100 ul of water).

**Reconstitution Method:**

1. Centrifuge at 5,000xg for 5min.
2. Carefully open the tube and add 100ul of sterile water to dissolve the DNA.
3. Close the tube and incubate for 10 minutes at room temperature.
4. Briefly vortex the tube and then do a quick spin (less than 5000xg) to concentrate the liquid at the bottom.
5. Store the suspended plasmid at -20°C. The DNA is stable for at least one year from date of shipping when stored at -20°C.

**RefSeq:** [NM\\_198244.2](#), [NP\\_937887.1](#)

**RefSeq Size:** 5300 bp

**RefSeq ORF:** 4539 bp

**Locus ID:** 1981

**Cytogenetics:** 3q27.1

**Protein Pathways:** Viral myocarditis

**MW:** 166.6 kDa

**Gene Summary:** The protein encoded by this gene is a component of the multi-subunit protein complex EIF4F. This complex facilitates the recruitment of mRNA to the ribosome, which is a rate-limiting step during the initiation phase of protein synthesis. The recognition of the mRNA cap and the ATP-dependent unwinding of 5'-terminal secondary structure is catalyzed by factors in this complex. The subunit encoded by this gene is a large scaffolding protein that contains binding sites for other members of the EIF4F complex. A domain at its N-terminus can also interact with the poly(A)-binding protein, which may mediate the circularization of mRNA during translation. Alternative splicing results in multiple transcript variants, some of which are derived from alternative promoter usage. [provided by RefSeq, Aug 2010]