

Product datasheet for RC219962

ZNF621 (NM_001098414) Human Tagged ORF Clone

Product data:

Product Type:	Expression Plasmids
Product Name:	ZNF621 (NM_001098414) Human Tagged ORF Clone
Tag:	Myc-DDK
Symbol:	ZNF621
Mammalian Cell Selection:	Neomycin
Vector:	pCMV6-Entry (PS100001)
E. coli Selection:	Kanamycin (25 ug/mL)
ORF Nucleotide Sequence:	>RC219962 ORF sequence Red=Cloning site Blue=ORF Green=Tags(s)

TTTTGTAATACGACTCACTATAGGGCGGCCGGAATTCGTCGACTGGATCCGGTACCGAGGAGATCTGCC
GCC**CGATCGCC**

ATGCTCAAACAACCTTGGCCTCAGGAGTCAGTGACCTTTGAGGATGTGGCTGTTACTTCACCCAGAATC
AATGGGCCAGCCTCGACCCTGCGCAGAGGGCCCTGTACGGGGAGGTGATGCTGGAGAATTATGCAAATGT
GGCTTCTCTGGTAGCGTTTCATTCCCCAAACCTGCTCTGATCTCCACCTGGAGAGAGGGGAAGCACCA
TGGGGCCAGATCCCTGGGACACCGAGATTCTGAGAGGCATCAGTCAAGTGGTGGTCTGGATCAAAA
ATGAAGGGCTAGTTATAAAGCAGGAAGCCTCTGAAGAAACAGAGTTGCACAGAATGCCAGTAGGAGGAT
TCTCAGGAACGTTTCTCAGCACTTTGATTTTAAAGGAAGGCACTGAAGCAGACTTTCAATCTAAATCCA
AATCTGATACTTCGAGGTGGAATGAAGTTCTATGAATGTAAGAATGTGGGAAAATCTTCCGATATAACT
CAAAGCTTATTCGGCATCAGATGAGTCATACTGGGAAAAGCCCTTTAAGTGAAGGAGTGTGGCAAAGC
TTTCAAGTCCAGCTATGATTGTATTGTACATGAGAAAAACCACATTGGAGAAGGGCCCTATGAATGTAAG
GAGTGTGGCAAAGGTTTGGATTCCAACACAGCCTTGACTCAACATCAGAGGATCCACACTGGAGAGAAAC
CCTATGAATGTAAGAGTGTGGAAAGGCTTCCGTAGGAGTGGGCATACCTGCAGCATCAGAGATTACA
CACGGGAGAGAACTCTATAAATGAAGGAATGTTGGAAAGCTTTCGGTGTAGGTCACCTTTTATTGTC
CATCAGAGAATTCATACTGGGGAGAAACCTTATCAATGTAAGGAGTGTGGCAAAGCCTTCACCCAGAAAA
TAGCCTCCATTCAGCATCAGAGAGTTTCACTGGGGAGAAAGCCTTATGAATGTAAGTGTGTGGAAAGC
CTTCAAATGGTATGGAAGTTTTGTTTCAGCATCAGAAATTCACCCCTGTGGAGAAGAAGCCAGTCAAGGTC
CTTGGGCCATCCCTGGTCACTCCAGTCCCTCTCCAGCCATACCTCCTGTTCTTCTCCAGGGATCCT
GTTCTGCTTCAGCCGTAGCTGTGCCTTCACTGACCTTTCCACATGCTGTGCTCATTCTACCTCTGGGAA
TTTTTTCATGCTGCTGCCTACATCTGGAATACCTTCTTCATCTGCCCAAATAGTGCCTGTCTCCAGGGT
CTTACTCCCACTGTGAAACCTTCCCAAGTATTCTCACCCCTTCTTCTCACTCTCA

ACGCGTACGCGGCCGCTCGAGCAGAAACTCATCTCAGAAGAGGATCTGGCAGCAAATGATATCTGGATT
ACAAGGATGACGACGATAAGGTTTAA



Protein Sequence: >RC219962 protein sequence
Red=Cloning site Green=Tags(s)

MLQTTWPQESVTFEDVAVYFTQNQWASLDPAQRALYGEVMLENYANVASLVAFPPKPALISHLERGEAP
 WGPDPWDEILRGISQGGESWIKNEGLVIKQEASEETELHRMPVGGLLRNVSQHFDKFRKALKQTFNLNP
 NLILRGGMKFYECKEKGKIFRYNSKLIRHQMSHTGEKPFKCKECKGKAFKSSYDCIVHEKNHIGEGPYECK
 ECGKGLSSNTALTQHQRHTGEKPYECKEKGKAFRRSAAYLQHQLRHTGEKLYKCKECKWAFGCRSLFIV
 HQRHTGEKPYCKECKGKAFKQIASIQHQRVHTGEKPYECKVCGKAFKWKYGSFVQHQLHPVEKKPVKV
 LGPSLVSPQCSSPAIPPVLLQGSCSASAVAVPSLTFPHAVLIPTSGNFFMLLPTSGIPSSSAQIVRVFQG
 LTPTVKPSVILTPSSHSS

TRTRPLEQKLISEEDLAANDILDYKDDDDKV

Chromatograms: https://cdn.origene.com/chromatograms/mk6371_h12.zip

Restriction Sites: SgfI-MluI

Cloning Scheme:



ACCN: NM_001098414

ORF Size: 1317 bp

OTI Disclaimer: The molecular sequence of this clone aligns with the gene accession number as a point of reference only. However, individual transcript sequences of the same gene can differ through naturally occurring variations (e.g. polymorphisms), each with its own valid existence. This clone is substantially in agreement with the reference, but a complete review of all prevailing variants is recommended prior to use. [More info](#)

OTI Annotation: This clone was engineered to express the complete ORF with an expression tag. Expression varies depending on the nature of the gene.

Components: The ORF clone is ion-exchange column purified and shipped in a 2D barcoded Matrix tube containing 10ug of transfection-ready, dried plasmid DNA (reconstitute with 100 ul of water).

Reconstitution Method:

1. Centrifuge at 5,000xg for 5min.
2. Carefully open the tube and add 100ul of sterile water to dissolve the DNA.
3. Close the tube and incubate for 10 minutes at room temperature.
4. Briefly vortex the tube and then do a quick spin (less than 5000xg) to concentrate the liquid at the bottom.
5. Store the suspended plasmid at -20°C. The DNA is stable for at least one year from date of shipping when stored at -20°C.

RefSeq: [NM_001098414.3](#)

RefSeq Size: 8247 bp

RefSeq ORF: 1320 bp

Locus ID: 285268

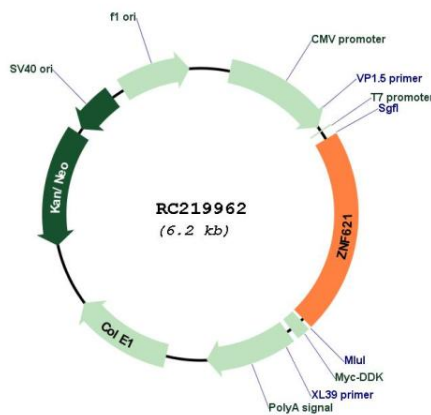
UniProt ID: [Q6ZSS3](#)

Cytogenetics: 3p22.1

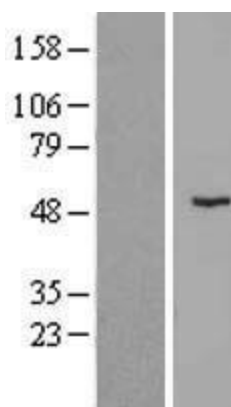
MW: 49.2 kDa

Gene Summary: May be involved in transcriptional regulation.[UniProtKB/Swiss-Prot Function]

Product images:



Circular map for RC219962



Western blot validation of overexpression lysate (Cat# [LY420578]) using anti-DDK antibody (Cat# [TA50011-100]). Left: Cell lysates from untransfected HEK293T cells; Right: Cell lysates from HEK293T cells transfected with RC219962 using transfection reagent MegaTran 2.0 (Cat# [TT210002]).