

Product datasheet for RC219961

C9orf170 (NM_001001709) Human Tagged ORF Clone

Product data:

Product Type: Expression Plasmids
Product Name: C9orf170 (NM_001001709) Human Tagged ORF Clone
Tag: Myc-DDK
Symbol: C9orf170
Synonyms: FLJ45537
Mammalian Cell Selection: Neomycin
Vector: pCMV6-Entry (PS100001)
E. coli Selection: Kanamycin (25 ug/mL)
ORF Nucleotide Sequence: >RC219961 ORF sequence
Red=Cloning site Blue=ORF Green=Tags(s)

TTTTGTAATACGACTCACTATAGGGCGGCCGGAATTCGTCGACTGGATCCGGTACCGAGGAGATCTGCC
GCC**CGATCGCC**

ATGTGGAGCAGGCGCGCCTCGGCGTCAGCAGAGCTCCCCTGCATCTCCTCTGGGGGTGTGGGGCCGA
GTGGGAGAACTGGCGGACAGAGGAAAGGGGCTCGCTCGCAAGGCCCGGGGAGGCCTGGCCTCTG
CTCAGTCGGTGCAAATGGAAAAAGAGACGTTCTGTTTCCGGAAAACCTGACTAATACAGTAGAGGAT
ATCCAGATTGACAACTTCAGGAGAAAGTCTGATTTAGGAGTCGGAAGCCCAGATTGAAAAACCTTGA
TAGATGTCACCTCGGAAGACCATGAAAACAGCCAAAATAATTCAAAGAGAAGATGCAAAGTGAAGTGA
AACAGACCAAAGA

ACGCGTACGCGGCCGCTCGAGCAGAACTCATCTCAGAAGAGGATCTGGCAGCAAATGATATCCTGGATT
ACAAGGATGACGACGATAAGGTTTAA

Protein Sequence: >RC219961 protein sequence
Red=Cloning site Green=Tags(s)
MWSRRGLGVSRAPLHLLLVWGPSGRGTGGQRKGASLARPGRGLASCSVANGKRDVLFRLKLTNTVED
IQIDNFRKSDLGVGSPDWKNLLIDVTREDHENSQNNKRRCKVNCETDQR

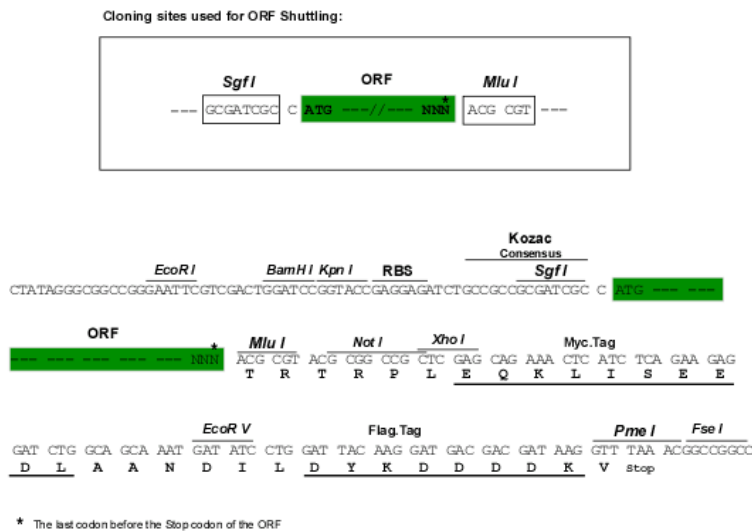
TRTRPLEQKLISEEDLAANDILDYKDDDDKV

Chromatograms: https://cdn.origene.com/chromatograms/mk6469_d11.zip

Restriction Sites: SgfI-MluI



[View online »](#)

Cloning Scheme:


ACCN: NM_001001709

ORF Size: 363 bp

OTI Disclaimer: The molecular sequence of this clone aligns with the gene accession number as a point of reference only. However, individual transcript sequences of the same gene can differ through naturally occurring variations (e.g. polymorphisms), each with its own valid existence. This clone is substantially in agreement with the reference, but a complete review of all prevailing variants is recommended prior to use. [More info](#)

OTI Annotation: This clone was engineered to express the complete ORF with an expression tag. Expression varies depending on the nature of the gene.

Components: The ORF clone is ion-exchange column purified and shipped in a 2D barcoded Matrix tube containing 10ug of transfection-ready, dried plasmid DNA (reconstitute with 100 ul of water).

Reconstitution Method:

1. Centrifuge at 5,000xg for 5min.
2. Carefully open the tube and add 100ul of sterile water to dissolve the DNA.
3. Close the tube and incubate for 10 minutes at room temperature.
4. Briefly vortex the tube and then do a quick spin (less than 5000xg) to concentrate the liquid at the bottom.
5. Store the suspended plasmid at -20°C. The DNA is stable for at least one year from date of shipping when stored at -20°C.

RefSeq: [NM_001001709.2](#), [NP_001001709.1](#)

RefSeq Size: 3409 bp

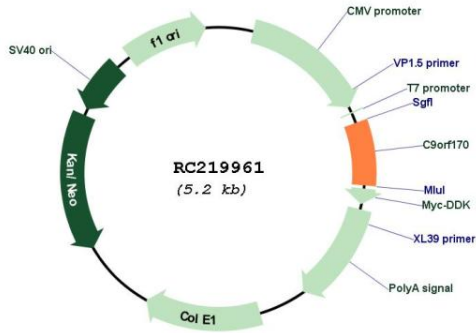
RefSeq ORF: 366 bp

Locus ID: 401535

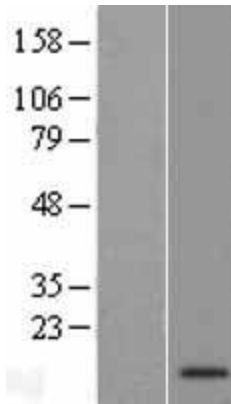
Cytogenetics: 9q21.33

MW: 13.4 kDa

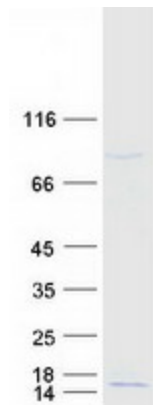
Product images:



Circular map for RC219961



Western blot validation of overexpression lysate (Cat# [LY424214]) using anti-DDK antibody (Cat# [TA50011-100]). Left: Cell lysates from untransfected HEK293T cells; Right: Cell lysates from HEK293T cells transfected with RC219961 using transfection reagent MegaTran 2.0 (Cat# [TT210002]).



Coomassie blue staining of purified C9orf170 protein (Cat# [TP319961]). The protein was produced from HEK293T cells transfected with C9orf170 cDNA clone (Cat# RC219961) using MegaTran 2.0 (Cat# [TT210002]).