

Product datasheet for RC219955

USP35 (NM_020798) Human Tagged ORF Clone

Product data:

| | |
|---------------------------|---|
| Product Type: | Expression Plasmids |
| Product Name: | USP35 (NM_020798) Human Tagged ORF Clone |
| Tag: | Myc-DDK |
| Symbol: | USP35 |
| Mammalian Cell Selection: | Neomycin |
| Vector: | pCMV6-Entry (PS100001) |
| E. coli Selection: | Kanamycin (25 ug/mL) |
| ORF Nucleotide Sequence: | >RC219955 representing NM_020798 Red=Cloning site Blue=ORF Green=Tags(s) |

TTTTGTAATACGACTCACTATAGGGCGGCCGGAATTCGTCGACTGGATCCGGTACCGAGGAGATCTGCC
GCCCGATCGCC

ATGGACAAGATCTTGGAGGCGGTGGTGACGTCGTCATACCCGGTCAGCGTGAAGCAGGGGCTGGTTCGGC
GCGTGTGGAGGCGGCGGCGAGCCGCTGGAGCGTGAGCAGTGCCTGGCGCTGCTGGCGCTGGGCGCGCG
CCTCTACGTGGGCGGCGCGGAGGAGCTGCCGCGCCGCTGGGCTGCCAGCTGCTGCAGTGGCCGGCCG
CACCACCCGACGCTTTCGCGGAGTTCTCAGCGCGCTCGCGTGTGCGCTGCTGCAGGTGGCGCCG
GCCCGCCGGGCCCCGCGGCTCGCTGGTGCAGTGGGTGTCAGCTGCTGCCGAGGGGCTGCGGC
CGACGAGGTGTTGCGCTGCTGCGGCGGAGGTGCTGCGCACCGTGTGCGAGCGCCGGGCCCGCGGCC
TGC GCGCAGGTGGCAGCGCTGCTGGCTCGCCACCCGCGCTGTGTGCCGACGACCCACCGCTGCTCT
TCTGCCAGCAGCTGGTGCCTGCGCCGCTTCCGCTGCCAGCCGAGGCGAGGAGGGCGCCGTGGA
GTTCTAGAGCAGGCCAGCAGGTGAGCGGGCTCCTGGCGCAGCTGTGGCGCGCACAGCCCGCCGCATC
CTGCCCTGCCTCAAAGAGCTGTTGCGAGTCATCTCCTGCGCAGAGGAGGAGCCACCATCTAGCGCCTGG
CCAGCGTGGTCCAGCACCTCCATTGGAGCTCATGGATGGTGTGTCGGAACTCAGCAATGATGACAG
TGTGACAGACTCGCAGATGCTGACTGCCATTAGCAGGATGATTGACTGGGTGCTCCTGGCCCTGGGGAAG
AATATTGACAAGTGGATCATTGCACTGCTGAAGGGCTGGCTGCTTAAAGAAGTTCAGCATCTTGATCG
AGGTTTCGCTCACAAAATTGAGAAGGTTTTCTCTAAGCTGCTGTACCCATCGTCCGGGAGCTGCCTT
GTCTGTGCTCAAGTACATGCTCCTGACCTTCCAGCACTCCACGAAGCCTTCCACCTGCTCCTCCCTCAC
ATCCCCCATAGTGGCCTCTCTGGTCAAGGAGGACTCGAACTCGGGGACCAGCTGCCTGGAGCAGCTGG
CGGAGCTGGTCCACTGCATGGTGTTCGGTTCCCGGGCTTCCCGGATCTGTATGAGCCTGTGATGGAGGC
CATCAAGGACCTCCATGTTCCCAATGAGGACCGCATCAAGCAGCTGCTGGGCGAGGATGCCTGGACTTCG
CAGAAGAGCGAGCTGGCGGGTTCTATCCCCGGCTCATGGCAAGTCAGACACGGGCAAGATTGGTCTCA
TCAACTGGGCAACACATGCTATGTCAACAGCATCCTTCAGGCCTTATTCATGGCGTCTGACTTTCAGACA
TTGTGTGCTCCGCTTACTGAGAACAACTCACAGCCCTGATACCAAGTGCAGTGGCTCTTTGGCTTC
CTAGAACACAGCCAGCGGCTGCCATTTCCCGAGAGAACTTCTCTCCGATCCTGGACGCCCTGGTTCA
GCCTGGCACCCAGCAGGACTGCTCGGAGTATCTGAAGTACCTGCTGGATCGGCTGCACGAAGAGGAGAA



[View online >](#)

```
AACGGGCACAAGGATCTGCCAGAACTCAAGCAGTCCAGCTCGCCCTCTCCGCCGAGGAGCCCCGGCC
CCAAGTCAACCTCTGTGGAAAAATGTTTGGAGGCAAGATAGTGACTCGGATCTGCTGTCTCTGCTGCC
TCAACGCTCCTCCCGGGAGGAGGCCTTACGGACCTCTCTCGCCTTCCCTCCTCCTGAGCGCTGTCG
CCGCCCGCCTGGGCTCTGTGATGCGCCACAGAAGACATCACAGCCCGGAGTTGCCCCACCAACC
AGTGCACAGGGGCCAGGCAGGTGGGTCTCGGAGGCAAAGAAACACTGCATCACAGAGGACACCCCC
CCACCAGCCTGTACATCGAAGCCTGACTCCAAGGAAGCTGGTGGCAGAGCAGTCAGGAGGAAAGGAT
AGAGAGGAGGAAGAAGGAAGGAGGAGAGAACGGAGAAGGAAGAAGTGGGGGAGGAGGAAAGCACC
AGAGGGGAAGGAGAGAGGAGAAAGAGGAGGAGGTGGAAGAGGAAGAAGAGAAAGTGGAGAAGGAGACAG
AAAAGGAGGCTGAGCAGGAAAAGGAAGAAGACAGCCTGGGAGCGGGGACCCACCCGGATGCTGCCATCCC
CTCCGGGAGCGGACATGTGGCTCTGAGGGCTCCCGCTCCGTCTGGACCTGGTTAACTACTTCTGTGCC
CCCAGAAAGTGCAGCAGAAAACCGCTACTACTGCGAGTCGTGTGCCTCCCTGCAGGATGCCGAGAAGG
TGGTGGAGCTGAGCCAAGGGCCGTGCTACCTCATCTCACACTGCTGCGTTCTCTTTGACCTGCGCAC
CATGCGGCGCCGAAGATCCTGGATGACGTCTCCATCCCCTGCTGCTCCGCTGCCACTGGCTGGTGGC
CGTGGCCAGGCCATGACCTCTGAGTGTGGTGGTGCCTCTGGAGTGTCTTCGGAGAGTGGTCACTACT
ACTGCTATGCCCGTGGGGCGCTGCCCGCCTGCCGCTTCTCTGGAACTGCCGATAGGCCAGAGCCGA
GAACCAGTGGTACTGTCAATGACACTCGGGTGTCTTCTTCTTCTCGAATCTGTGAGCAACGTACC
TCCTTCTTCCCTAAGGACACAGCCTATGTGCTGTTTTACCGCGAGCGGCCAGGGAGGGGCCGAGGCTG
AGTTGGGCTCTTCTAGAGTCCGGACAGAGCCACCCTGCACAAGGACTTGATGGAAGCCATTTCAAAGA
CAACATCCTTTACCTACAGGAGCAGGAGAAGGAGGCCCGGAGCAGGGCGCCCTACATCTCTGCACTCCC
ACATCTCCGCACTGGGGGAGGGCTTTGATGAAGACAAGGATGAGGATGAAGGCTCTCCAGGGGGCTGCA
ATCCTGCAGGTGGCAATGGTGGTGAATTCCACAGACTGGTCTTC
```

```
ACGCGTACGCGGCCGCTCGAGCAGAACTCATCTCAGAAGAGGATCTGGCAGCAAATGATATCCTGGATT
ACAAGGATGACGACGATAAGGTTTAA
```

Protein Sequence:

>RC219955 representing NM_020798
 Red=Cloning site Green=Tags(s)

```
MDKILEAVVTSSYPVSVKQGLVRRVLEAARQPLEREQCLALLALGARLYVGGAEELPRRVGCQLLHVAGR
HHPDVFAEFFSARRVLRLLQGGAGPPGPRALACVQLGLQLLEGPAADEVFALLRREVLRTVCERPGPAA
CAQVARLLARHPRCVPDPGPHRLLFQQLVRCLGRFRCPAEGEEGAVEFLEQAQQVSGLLAQLWRAQPAAI
LPLKELFAVISCAGEEPPSSALASVVQHLPLELMDGVVRNLSNDDSVTDSQMLTAISRMDWVSWPLGK
NIDKWIALLKGLAAVKKFSILIEVSLTKIEKVFSKLLYPIVRGAALSVLKYMMLTFQHSHEAFHLLPH
IPPMVASLVKEDSNSGTSCLQLAELVHCMVFRFPGFDPDYEPVMEAIKDLHVPNEDRIKQLLQDQAWTS
QKSELAGFYPRMLMAKSDTGKIGL INLGNTCYVNSILQALFMSDFRHCVLRL TENNSQPLMTKLQWLF
LEHSQRPAISPENFLSASWTPWFSPTGQQDCSEYLKYLDRLEHEEKTGTRICQKLKQSSSPSPPEEPPA
PSSTSVEKMFGGKIVTRICCLCLNVSSREEAFDLSLAFPPPERCRRRRLGSMRPTEDITARELPPT
SAQGPGRVGRPRQRKHCITEDTPPTSLYIEGLDSKEAGGQSSQEERIEREEEGKEERTEKEEVGEEEEEST
RGEGEREKEEEEVEEVEEVEKETEKEAEQEKEEDSLGAGTHPDAIIPSGERTCGSEGSRSVLDLVNYFLS
PEKLTAEENRYCESCASLQDAEKVVELSQGPCYLILTLRFSFDLRTMRRRKILDDVSIPLLLRPLAGG
RGQAYDLCSVVVHSGVSSSEGHYYCYAREGAARPAASLGTADRPEPENQWYLFNDTRVSVSFFESVSNVT
SFFPKDTAYVLFYRQRPREGPEAELGSSRVTEPTLHKDLMEAIKDNILYLQEQEKEARSRAAYISALP
TSPHWGRGFDEDKDEDEGSPGGCNPAGGNGGDFHRLVF
```

```
TRTRPLEQKLISEEDLAANDILDYKDDDDKV
```

Chromatograms:

https://cdn.origene.com/chromatograms/mk8010_d11.zip

Restriction Sites:

Sgfl-MluI

Cloning Scheme:


ACCN: NM_020798

ORF Size: 3054 bp

OTI Disclaimer: The molecular sequence of this clone aligns with the gene accession number as a point of reference only. However, individual transcript sequences of the same gene can differ through naturally occurring variations (e.g. polymorphisms), each with its own valid existence. This clone is substantially in agreement with the reference, but a complete review of all prevailing variants is recommended prior to use. [More info](#)

OTI Annotation: This clone was engineered to express the complete ORF with an expression tag. Expression varies depending on the nature of the gene.

Components: The ORF clone is ion-exchange column purified and shipped in a 2D barcoded Matrix tube containing 10ug of transfection-ready, dried plasmid DNA (reconstitute with 100 ul of water).

Reconstitution Method:

1. Centrifuge at 5,000xg for 5min.
2. Carefully open the tube and add 100ul of sterile water to dissolve the DNA.
3. Close the tube and incubate for 10 minutes at room temperature.
4. Briefly vortex the tube and then do a quick spin (less than 5000xg) to concentrate the liquid at the bottom.
5. Store the suspended plasmid at -20°C. The DNA is stable for at least one year from date of shipping when stored at -20°C.

RefSeq: [NM_020798.4](#)

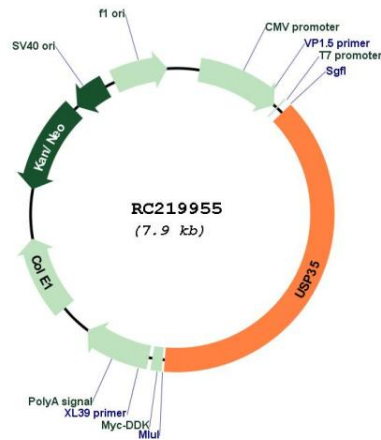
RefSeq Size: 4197 bp

RefSeq ORF: 3057 bp

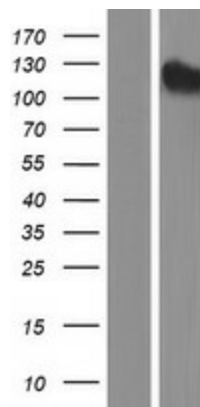
Locus ID: 57558
UniProt ID: [Q9P2H5](#)
Cytogenetics: 11q14.1
Protein Families: Druggable Genome, Protease
MW: 113.2 kDa

Gene Summary: This gene encodes a member of the peptidase C19 family of ubiquitin-specific proteases. These deubiquitinating enzymes (DUBs) catalyze the removal of ubiquitin proteins from other proteins. The encoded protein associates with polarized mitochondria and has been shown to inhibit NF-kappa B activation and delay PARK2-mediated degradation of mitochondria. Expression of this gene is upregulated by the let-7a microRNA and reduced expression has been observed in human tumor tissues. [provided by RefSeq, Jul 2017]

Product images:



Circular map for RC219955



Western blot validation of overexpression lysate (Cat# [LY412308]) using anti-DDK antibody (Cat# [TA50011-100]). Left: Cell lysates from untransfected HEK293T cells; Right: Cell lysates from HEK293T cells transfected with RC219955 using transfection reagent MegaTran 2.0 (Cat# [TT210002]).