

Product datasheet for **RC219951**

ERV31 (ERV3-1) (NM_001007253) Human Tagged ORF Clone

Product data:

Product Type:	Expression Plasmids
Product Name:	ERV31 (ERV3-1) (NM_001007253) Human Tagged ORF Clone
Tag:	Myc-DDK
Symbol:	ERV31
Synonyms:	envR; ERV-R; ERV3; ERVR; HERV-R; HERVR
Mammalian Cell Selection:	Neomycin
Vector:	pCMV6-Entry (PS100001)
E. coli Selection:	Kanamycin (25 ug/mL)



[View online »](#)

ORF Nucleotide Sequence:

>RC219951 representing NM_001007253
 Red=Cloning site Blue=ORF Green=Tags(s)

TTTTGTAATACGACTCACTATAGGGCGGCCGGAATTCGTCGACTGGATCCGGTACCGAGGAGATCTGCC
 GCC**CGCATCGCC**

ATGCTGGGTATGAACATGCTACTCATCACTTTGTTCTTGCTACTCCCCTTATCCATGTTAAAAGGAGAAC
 CCTGGGAGGGATGCCTCCACTGCACCCACACTAGTGGTGGGGAACATCATGACTAAAACCTGTTGTA
 TCACACTTATTATGAGTGTGCTGGGACCTGCCTAGGAAGTGTACTCACAAACAGACAACCTACTCAGTC
 TGTGACCCAGGAAGGGCCAGCCTTATGTGTGTTATGACCCTAAGTCTTCACCTGGGACCTGGTTTGAAA
 TTCATGTCGGGTCAAAGGAAGGGGATCTTCAAACCAAACCAAGGTATTTCCCTCTGGCAAGGATGTCGT
 ATCCTTAACTTTGATGTTTGCCAGATAGTATCCATGGGCTCACTTTCCCGTAATCTTCAGTTCCATG
 GAGTACTATAGTAGTGCATAAAAATAGGTATGCACACCCTGCTTGTCCACCGATTCCCAGTAACAA
 CTTGCTGGGACTGCACAACGTGGTCCACTAACCAACAATCACTAGGGCCAATTATGCTTACAAAATACC
 ATTAGAACAGATTGTAACAAGCACTTGCAATTCTGTAATCTTACCATCTTAGAGCCAGATCAGCCC
 ATATGGACAACAGTTTTAAAAGCACCGCTAGGGGCACGAGTCAGCGGTGAAGAAATTGGCCAGGAGCCT
 ATGCTATCTATATATACATAAAGAAAATCGGACCCGCTCAACCCAACAGTTCGGAGTTTTTGAGTCATT
 CTATGAGCATGTTAACAGAAATTCCTGAGCCCCCTCCCTTGGCCAGTAATTTATTCGCCAACTGGCT
 GAAAACATAGCCAGCAGCCTGCACGTTGCTTATGTTATGTCTGTGGGGGAATGAACATGGGAGACCAAT
 GGCCATGGGAAGCAAGGGAATAATGCCCAAGATAATTTCACTAACCGCCTCTTCCCTCGAACCTGC
 ACCATCAAGTCAGAGCATCTGGTTCTTAAAAACCTCCATTATTGGAAAATTTGTATTGCTCGTGGGGA
 AAGGCCTTACAGACCCAGTAGGAGAGTTAACTGCCTAGGACAACAATATTACAACGAGACACTAGGAA
 AGACTTTATGGAGGGGCAAAAGCAATAATTCTGAATCACCACACCAAGCCATTCTCTGTTTCCCATC
 TTTAAACCATTCTTGGTACCAACTTGAAGCTCCAATACCTGGCAGGCACCCTCTGGCCTCTACTGGATC
 TGTGGGCCACAAGCATATCGACAAGTGCAGCTAAATGGTCAGGGGCTGTGACTGGGGACAATTAGGC
 CGTCTTCTTCTAATGCCCTAAAACAGGGAGAAGCCTTAGGATACCCCATCTATGATGAAACTAAAAG
 GAAAAGCAAAAGAGGCATAACTATAGGAGATTGGAAGGACAATGAATGGCCTCCTGAAAGAATAATTCAA
 TATTATGGCCAGCCACCTGGGCAGAAGATGGAATGTGGGGATACCGACCCAGTTTACATGCTTAAAC
 GCATTATAAGATTGCAGGCAGTACTAGAAATCATTACCAATGAACTGCAGGGGCTTGAATCTGCTTGC
 CCAGCAAGCCACAAAAATGAGAAATGTCATTTATCAAAATAGACTGGCCTTAGACTACCTCTAGCCAG
 GAAGAGGGAGTATGCGGAAAGTTCAACCTTACTAACTGCTGCCTGGAACCTGATGACGAAGGAAAGTCA
 TCAAAGAAATAACTGCTAAAATCCAAAAGTTAGCTCACATCCAGTTCAGACTTGAAAGGA

ACGCGTACGCGGCCGCTCGAGCAGAAACTCATCTCAGAAGAGGATCTGGCAGCAAATGATATCCTGGATT
 ACAAGGATGACGACGATAAGGTTTAA

Protein Sequence:

>RC219951 representing NM_001007253
 Red=Cloning site Green=Tags(s)

MLGMNMLLITLFLLLPLSMLKGEPEWGLHCTHTTWSGNIMTKLLYHTYYECAGTCLGTCTHNQTTYSV
 CDPGRGQPYVYCDPKSSPGTWFEIHVGSKEGDLNQTQKVFPSGKDVVSLYFDVCQIVSMGSLFPVIFSSM
 EYYSSCHKNRYAHPACSTDSPVTTWCDDTTWSTNQQSLGPIMLTKIPLEPDKTSTCNSVNLITILEPDQP
 IWTTGLKAPLGARVSGEEIGPGAYVYLYIIKKTRTRSTQQFRVFESFYEHVNQKLPEPPPLASNLFAQLA
 ENIASSLHVASCYVCGMNMGDQWPWEARELMPQDNFTLTASSLEPAPSSQSIWFLKTSIIGKFCIARWG
 KAFTDPVGELTCLGQQYYNETLGLTLWRGKSNNSESPHPSFRRFSLNHSWYQLEAPNTWQAPSGLYWI
 CGPQAYRQLPAKWSGACVLGTRPSFFLMPLKQGEALGYPIYDETKRKSARGITIGDWKDNEWPPERIIQ
 YYPATWAEDGMWGYRTPVYMLNRIIRLQAVLEIITNETAGALNLLAQQATKMRNVIYQNRALDYLALQ
 EEGVCGKFNLTNCCLELDDEGKVIKEITAKIQKLAHIPVQTKWK

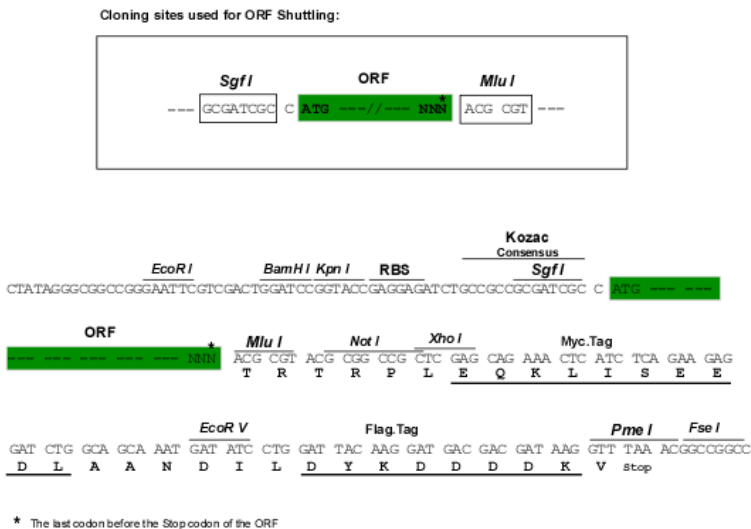
TRTRPLEQKLISEEDLAANDILDYKDDDDKV

Chromatograms:

https://cdn.origene.com/chromatograms/mk8020_d12.zip

Restriction Sites: SgfI-MluI

Cloning Scheme:



ACCN: NM_001007253

ORF Size: 1812 bp

OTI Disclaimer: The molecular sequence of this clone aligns with the gene accession number as a point of reference only. However, individual transcript sequences of the same gene can differ through naturally occurring variations (e.g. polymorphisms), each with its own valid existence. This clone is substantially in agreement with the reference, but a complete review of all prevailing variants is recommended prior to use. [More info](#)

OTI Annotation: This clone was engineered to express the complete ORF with an expression tag. Expression varies depending on the nature of the gene.

Components: The ORF clone is ion-exchange column purified and shipped in a 2D barcoded Matrix tube containing 10ug of transfection-ready, dried plasmid DNA (reconstitute with 100 ul of water).

- Reconstitution Method:
1. Centrifuge at 5,000xg for 5min.
 2. Carefully open the tube and add 100ul of sterile water to dissolve the DNA.
 3. Close the tube and incubate for 10 minutes at room temperature.
 4. Briefly vortex the tube and then do a quick spin (less than 5000xg) to concentrate the liquid at the bottom.
 5. Store the suspended plasmid at -20°C. The DNA is stable for at least one year from date of shipping when stored at -20°C.

RefSeq: [NM_001007253.4](#)

RefSeq Size: 2829 bp

RefSeq ORF: 1815 bp

Locus ID: 2086

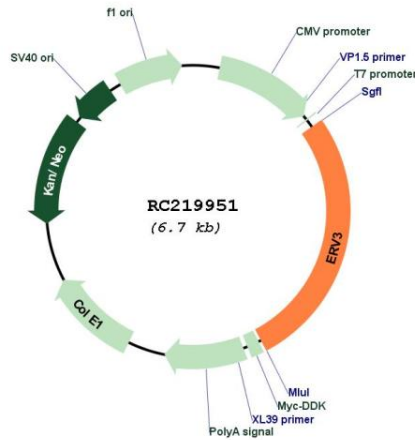
UniProt ID: [Q14264](#)

Cytogenetics: 7q11.21

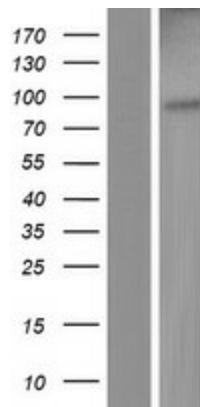
MW: 67.8 kDa

Gene Summary: This gene contains sequence derived from endogenous retrovirus, and is therefore similar to multiple other loci in the genome. Transcripts at this locus encode a conserved protein with a predicted signal peptide and similarity to the Env polyprotein. This protein is overexpressed in colorectal and other cancers. [provided by RefSeq, Jan 2017]

Product images:



Circular map for RC219951



Western blot validation of overexpression lysate (Cat# [LY423472]) using anti-DDK antibody (Cat# [TA50011-100]). Left: Cell lysates from untransfected HEK293T cells; Right: Cell lysates from HEK293T cells transfected with RC219951 using transfection reagent MegaTran 2.0 (Cat# [TT210002]).