

## Product datasheet for **RC219949**

### **LILRB1 (NM\_006669) Human Tagged ORF Clone**

#### **Product data:**

Product Type:	Expression Plasmids
Product Name:	LILRB1 (NM_006669) Human Tagged ORF Clone
Tag:	Myc-DDK
Symbol:	LILRB1
Synonyms:	CD85J; ILT-2; ILT2; LIR-1; LIR1; MIR-7; MIR7; PIR-B; PIRB
Mammalian Cell Selection:	Neomycin
Vector:	pCMV6-Entry (PS100001)
E. coli Selection:	Kanamycin (25 ug/mL)



[View online »](#)

ORF Nucleotide  
Sequence:

>RC219949 ORF sequence  
Red=Cloning site Blue=ORF Green=Tags(s)

TTTTGTAATACGACTCACTATAGGGCGGCCGGAATTCGTCGACTGGATCCGGTACCGAGGAGATCTGCC  
GCCCGGATCGCC

ATGACCCCATCCTCACGGTCTGATCTGTCTCGGGCTGAGTCTGGGCCCCCGACCCACGTGCAGGCAG  
GGCACCTCCCAAGCCACCCTCTGGGCTGAACCAAGGCTCTGTGATCACCGAGGGAGTCCCTGTGACCCCT  
CAGGTGTGAGGGGGCCAGGAGACCCAGGAGTACCGTCTATATAGAGAAAAGAAAACAGCACCCCTGGATT  
ACACGGATCCACAGGAGCTTGTGAAGAAGGGCCAGTTCCCCATCCCATCCATCACCTGGGAACATGCAG  
GGCGGTATCGCTGTTACTATGGTAGCGACACTGCAGGCCGCTCAGAGAGCAGTGACCCCTGGAGCTGGT  
GGTGACAGGAGCTACATCAAACCCACCCTCTCAGCCCAGCCAGCCCCGTGGAACCTCAGGAGGGAAT  
GTAACCCCTCCAGTGTGACTCACAGGTGGCATTGATGGCTTCATTCTGTGTAAGGAAGGAGAAGATGAAC  
ACCCACAATGCCTGAACCTCCAGCCCCATGCCCGTGGGTCGTCGCCGCCATCTTCTCCGTGGGCCCGT  
GAGCCCGAGTCGAGGTGGTGGTACAGGTGCTATGCTTATGACTCGAACTCTCCCTATGAGTGGTCTCTA  
CCAGTGATCTCCTGGAGCTCCTGGTCTAGGTGTTTCTAAGAAGCCATCACTCTCAGTGACGCCAGGTC  
CTATCGTGGCCCCGAGGAGACCCTGACTCTGCAGTGTGGCTCTGATGCTGGCTACAACAGATTTGTTCT  
GTATAAGGACGGGGAACGTGACTTCTTCAGCTCGCTGGCGCACAGCCCCAGGCTGGGCTCTCCAGGCC  
AACTTCACCCCTGGGCCCTGTGAGCCGCTCTACGGGGGCCAGTACAGATGCTACGGTGCACACAACCTCT  
CCTCCGAGTGGTGGCCCCCAGCGACCCCTGGACATCCTGATCGCAGGACAGTTCTATGACAGAGTCTC  
CCTCTCGGTGCAGCCGGGCCACGGTGGCCTCAGGAGAGAACGTGACCCCTGCTGTGTGAGTGCACAGGGA  
TGGATGCAAACTTCTCTGACCAAGGAGGGGGCAGCTGATGACCCATGGCGTCTAAGATCAACGTACC  
AATCTCAAAAATACCAGGCTGAATCCCCATGGGTCCTGTGACCTCAGCCCATGCGGGGACCTACAGGTG  
CTACGGCTCACAGAGCTCAAACCCCTACCTGCTGACTCACCCAGTGACCCCTGGAGCTCGTGGTCTCA  
GGACCGTCTGGGGCCCCAGTCCCCGACAACAGGCCCCACCTCCACATCTGGCCCTGAGGACCAGCCCC  
TCACCCACCAGGGTGGATCCCCAGAGTGGTCTGGGAAGGCACCTGGGGTTGTGATCGGCATCTTGGT  
GGCCGTACTCTACTGCTCCTCCTCCTCCTCCTCCTCCTCCTCCTCCTCCTCCTCCTCCTCCTCCTCCTC  
CACTGGACATCGACCCAGAGAAAGGCTGATTTCCAACATCCTGCAGGGGCTGTGGGGCCAGAGCCCACAG  
ACAGAGGCCTGCAGTGGAGTCCAGCCAGCTGCCGATGCCAGGAAGAAAACCTCTATGCTGCCGTGAA  
GCACACACAGCCTGAGGATGGGGTGGAGATGGACTCGGAGCCACACGATGAAGACCCCAAGGCAGTG  
ACGTATGCCGAGGTGAAACTCCAGACCTAGGAGAGAAATGGCCTCTCCTCCTTCCCCTGCTGTGGG  
AATTCTGGACACAAAGGACAGACAGGGGAAGAGGACAGGCAGATGGACTGAGGCTGCTGCATCTGA  
AGCCCCCAGGATGTGACCTACGCCAGCTGCACAGCTTGACCCTTAGACGGAAGGCAACTGAGCCTCCT  
CCATCCCAGGAAGGGCCCTCTCCAGCTGTGCCAGCATCTACGCCACTCTGGCCATCCAC

ACGGTACGCGGCCGCTCGAGCAGAACTCATCTCAGAAGAGGATCTGGCAGCAATGATATCCTGGATT  
ACAAGGATGACGACGATAAGGTTTAA

**Protein Sequence:** >RC219949 protein sequence  
Red=Cloning site Green=Tags(s)

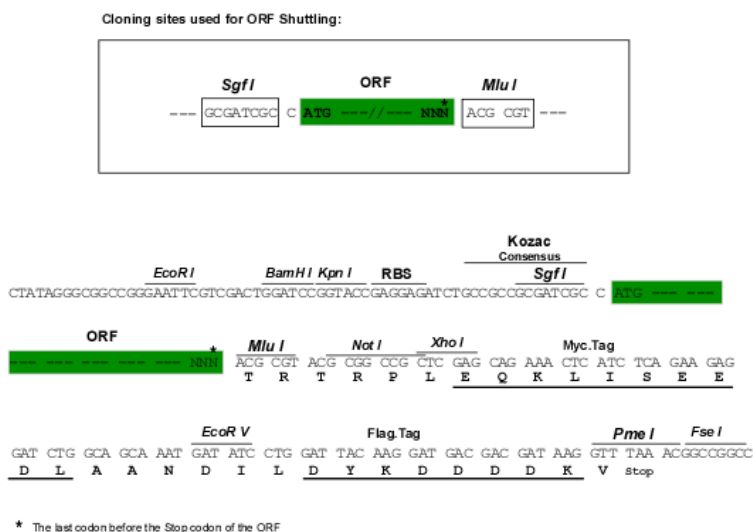
MTPILTVL ICLGLSLGPRTHVQAGHL PKPTLW AEPGSVITQ GSPVTLRCQGGQETQEYRL YREKKTAPWI  
 TRIPQELVKKGQFP I PSITWEHAGRYRCY YGSDTAGRSESSDPLEL VVTGAYIKP TLSAQSPV VNSGGN  
 VTLCQDSQVAFDGF ILCKEGEDEHPQCL NSQPHARGSSRAIF SVGPVSPSRRWY RYAYDNSP YEWSL  
 PSDLLELLVLGVSKKPSLSVQPGPIVAPEETL TLQCGSDAGYNRFVL YKDG ERDFLQLAGAQ P QAGLSQA  
 NFTLGPVSRSYGGQYRCYGAHNLSSEWSAPSDPLD ILIAGQFYDRVSLSVQPGPTVASGENVTLLCQSQG  
 WMQTFLLLTKEGAADDPWRLRSTYQSQYQAEFPMGPV T SAHAGTYRCYGSQSSKPYLLTHPSDPLELVVS  
 GPSGGPSSPTTGTSTSGPEDQPLTPTGSDPQSGLGRHLGVVIGILVAVILL LLLLLLLLLLILRHRRQ GK  
 HWTSTQRKADFQHPAGAVGPEPTDRGLQWRSSPAADAQEENLYAAVKHTQPEDGVEMDTRSPHDEDPQAV  
 TYAEVKHSRPRREMASPPSPLSGEFLDTKDRQAEEDRQMDTEAAASEAPQDVTYAQLHSLTLRRKATEPP  
 PSQEGSPAVPSIYATLAIH

TRTRPLEQKLISEEDLAANDILDYKDDDDKV

**Chromatograms:** [https://cdn.origene.com/chromatograms/mk6667\\_h06.zip](https://cdn.origene.com/chromatograms/mk6667_h06.zip)

**Restriction Sites:** SgfI-MluI

**Cloning Scheme:**



**ACCN:** NM\_006669

**ORF Size:** 1950 bp

**OTI Disclaimer:** The molecular sequence of this clone aligns with the gene accession number as a point of reference only. However, individual transcript sequences of the same gene can differ through naturally occurring variations (e.g. polymorphisms), each with its own valid existence. This clone is substantially in agreement with the reference, but a complete review of all prevailing variants is recommended prior to use. [More info](#)

**OTI Annotation:** This clone was engineered to express the complete ORF with an expression tag. Expression varies depending on the nature of the gene.

**Components:** The ORF clone is ion-exchange column purified and shipped in a 2D barcoded Matrix tube containing 10ug of transfection-ready, dried plasmid DNA (reconstitute with 100 ul of water).

**Reconstitution Method:**

1. Centrifuge at 5,000xg for 5min.
2. Carefully open the tube and add 100ul of sterile water to dissolve the DNA.
3. Close the tube and incubate for 10 minutes at room temperature.
4. Briefly vortex the tube and then do a quick spin (less than 5000xg) to concentrate the liquid at the bottom.
5. Store the suspended plasmid at -20°C. The DNA is stable for at least one year from date of shipping when stored at -20°C.

**Note:** Plasmids are not sterile. For experiments where strict sterility is required, filtration with 0.22um filter is required.

**RefSeq:** [NM\\_006669.2](#), [NP\\_006660.1](#)

**RefSeq Size:** 3229 bp

**RefSeq ORF:** 1953 bp

**Locus ID:** 10859

**UniProt ID:** [Q8NHL6](#)

**Cytogenetics:** 19q13.42

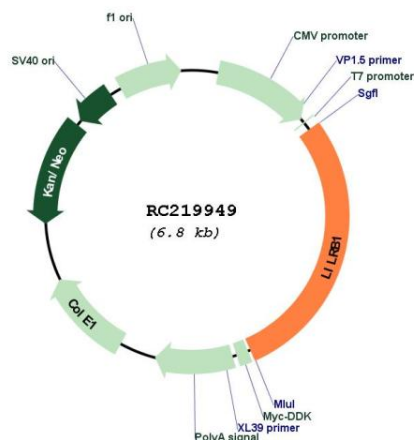
**Domains:** ig, IGc2, IG

**Protein Families:** Transmembrane

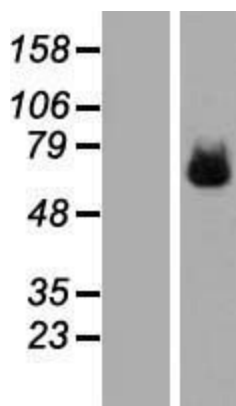
**MW:** 70.8 kDa

**Gene Summary:** This gene is a member of the leukocyte immunoglobulin-like receptor (LIR) family, which is found in a gene cluster at chromosomal region 19q13.4. The encoded protein belongs to the subfamily B class of LIR receptors which contain two or four extracellular immunoglobulin domains, a transmembrane domain, and two to four cytoplasmic immunoreceptor tyrosine-based inhibitory motifs (ITIMs). The receptor is expressed on immune cells where it binds to MHC class I molecules on antigen-presenting cells and transduces a negative signal that inhibits stimulation of an immune response. It is thought to control inflammatory responses and cytotoxicity to help focus the immune response and limit autoreactivity. Multiple transcript variants encoding different isoforms have been found for this gene. [provided by RefSeq, Jul 2008]

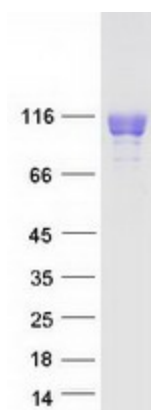
Product images:



Circular map for RC219949



Western blot validation of overexpression lysate (Cat# [LY416494]) using anti-DDK antibody (Cat# [TA50011-100]). Left: Cell lysates from untransfected HEK293T cells; Right: Cell lysates from HEK293T cells transfected with RC219949 using transfection reagent MegaTran 2.0 (Cat# [TT210002]).



Coomassie blue staining of purified LILRB1 protein (Cat# [TP319949]). The protein was produced from HEK293T cells transfected with LILRB1 cDNA clone (Cat# RC219949) using MegaTran 2.0 (Cat# [TT210002]).