

## Product datasheet for **RC219940**

### CD34 (NM\_001773) Human Tagged ORF Clone

#### Product data:

Product Type:	Expression Plasmids
Product Name:	CD34 (NM_001773) Human Tagged ORF Clone
Tag:	Myc-DDK
Symbol:	CD34
Mammalian Cell Selection:	Neomycin
Vector:	pCMV6-Entry (PS100001)
E. coli Selection:	Kanamycin (25 ug/mL)
ORF Nucleotide Sequence:	>RC219940 representing NM_001773 Red=Cloning site Blue=ORF Green=Tags(s)

TTTTGTAATACGACTCACTATAGGGCGGCCGGGAATTCGTCGACTGGATCCGGTACCGAGGAGATCTGCC  
GCC**CGATCGCC**

ATGCTGGTCCGCAGGGGCGCGCGCAGGGCCAGGATGCCGCGGGGCTGGACCGCGCTTTGCTTGCTGA  
GTTTGCTGCCTTCTGGGTTTCATGAGTCTTGACAACAACGGTACTGCTACCCAGAGTTACCTACCCAGGG  
AACATTTTCAAATGTTTCTACAAATGTATCCTACCAAGAACTACAACACCTAGTACCCTTGAAGTACC  
AGCCTGCACCCTGTGTCTCAACATGGCAATGAGGCCACAACAACATCACAGAAACGACAGTCAAATTC  
CATCTACCTCTGTGATAACCTCAGTTTATGGAAACACAAACTCTTGTCCAGTCACAGACCTCTGTAAT  
CAGCACAGTGTTACCAACCCAGCCAACGTTTCAACTCCAGAGACAACCTTGAAGCCTAGCCTGTCACT  
GGAAATGTTTCAGACCTTCAACCACTAGCACTAGCCTTGCAACATCTCCCACTAAACCTATACATCAT  
CTTCTCCTATCCTAAGTGACATCAAGGCAGAAATCAAATGTTTCAGGCATCAGAGAAGTAAAATTGACTCA  
GGGCATCTGCCTGGAGCAAAATAAGACCTCCAGCTGTGCGGAGTTTAAAGAAGGACAGGGGAGAGGCCTG  
GCCCGAGTGCTGTGTGGGAGGAGCAGGCTGATGCTGATGCTGGGGCCAGGTATGCTCCCTGCTCCTTG  
CCCAGTCTGAGGTGAGGCCTCAGTGTCTACTGCTGGTCTTGCCCAACAGAACAGAAATTTCCAGCAA  
CCAACCTTATGAAAAGCACCAATCTGACCTGAAAAGCTGGGGATCCTAGATTTCACTGAGCAAGATGTT  
GCAAGCCACCAGAGCTATTCCAAAAGACCCTGATTGCACTGGTACCTCGGGAGCCTGCTGGCTGTCT  
TGGGCATCACTGGCTATTTCTGATGAATCGCCGAGCTGGAGCCCCACAGGAGAAAGGCTGGAGCTGGA  
ACCC

**ACGCGT**ACGCGGCCGCTCGAGCAGAACTCATCTCAGAAGAGGATCTGGCAGCAAATGATATCCTGGATT  
ACAAGGATGACGACGATAAGGTTTAA



[View online »](#)

**Protein Sequence:** >RC219940 representing NM\_001773  
Red=Cloning site Green=Tags(s)

MLVRRGARAGPRMPRGWALCLLSLLPSGFMSLDNNGTATPELPTQGTF SNVSTNVSYQETTTTPSTLGST  
 SLHPV SQHGNEATTNITETT VKFTSTSVITSVYGNTNSSVQSQT SVISTVFTTPANVSTPETTLKPSLSP  
 GNVSDLSTTSTSLATSP TKPYTSSPILSDIKAEIKCSGIREVKLTQGICLEQNK TSSCAEFKKDRGEGL  
 ARVLCGEEQADADAGA QVCSLLLAQSEVRPQCLLLVLANRTEISSKLQLMKKHQSDLKKLGILDFTEQDV  
 ASHQSYSQKTLIALVTSGALLAVLGITGYFLMNRRSWSPTGERLELEP

TRTRPLEQKLISEEDLAANDILDYKDDDDKV

**Chromatograms:** [https://cdn.origene.com/chromatograms/mk6044\\_a06.zip](https://cdn.origene.com/chromatograms/mk6044_a06.zip)

**Restriction Sites:** SgfI-MluI

**Cloning Scheme:**

Cloning sites used for ORF Shuttling:



**ACCN:** NM\_001773

**ORF Size:** 984 bp

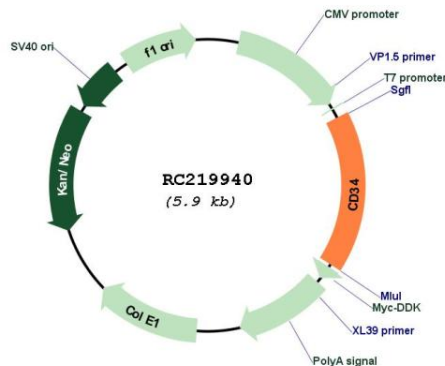
**OTI Disclaimer:** The molecular sequence of this clone aligns with the gene accession number as a point of reference only. However, individual transcript sequences of the same gene can differ through naturally occurring variations (e.g. polymorphisms), each with its own valid existence. This clone is substantially in agreement with the reference, but a complete review of all prevailing variants is recommended prior to use. [More info](#)

**OTI Annotation:** This clone was engineered to express the complete ORF with an expression tag. Expression varies depending on the nature of the gene.

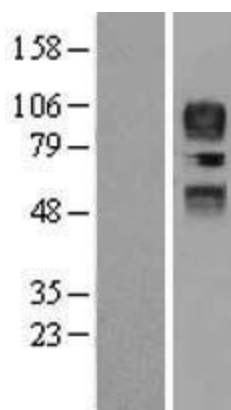
**Components:** The ORF clone is ion-exchange column purified and shipped in a 2D barcoded Matrix tube containing 10ug of transfection-ready, dried plasmid DNA (reconstitute with 100 ul of water).

<b>Reconstitution Method:</b>	<ol style="list-style-type: none"><li>1. Centrifuge at 5,000xg for 5min.</li><li>2. Carefully open the tube and add 100ul of sterile water to dissolve the DNA.</li><li>3. Close the tube and incubate for 10 minutes at room temperature.</li><li>4. Briefly vortex the tube and then do a quick spin (less than 5000xg) to concentrate the liquid at the bottom.</li><li>5. Store the suspended plasmid at -20°C. The DNA is stable for at least one year from date of shipping when stored at -20°C.</li></ol>
<b>RefSeq:</b>	<a href="#">NM_001773.3</a>
<b>RefSeq Size:</b>	2657 bp
<b>RefSeq ORF:</b>	987 bp
<b>Locus ID:</b>	947
<b>UniProt ID:</b>	<a href="#">P28906</a>
<b>Cytogenetics:</b>	1q32.2
<b>Protein Families:</b>	Adult stem cells, Cancer stem cells, Druggable Genome, Embryonic stem cells, ES Cell Differentiation/IPS, Transmembrane
<b>Protein Pathways:</b>	Cell adhesion molecules (CAMs), Hematopoietic cell lineage
<b>MW:</b>	34.8 kDa
<b>Gene Summary:</b>	The protein encoded by this gene may play a role in the attachment of stem cells to the bone marrow extracellular matrix or to stromal cells. This single-pass membrane protein is highly glycosylated and phosphorylated by protein kinase C. Two transcript variants encoding different isoforms have been found for this gene. [provided by RefSeq, Aug 2011]

### Product images:



Circular map for RC219940



Western blot validation of overexpression lysate (Cat# [LY400668]) using anti-DDK antibody (Cat# [TA50011-100]). Left: Cell lysates from untransfected HEK293T cells; Right: Cell lysates from HEK293T cells transfected with RC219940 using transfection reagent MegaTran 2.0 (Cat# [TT210002]).