

Product datasheet for **RC219929**

NVL (NM_206840) Human Tagged ORF Clone

Product data:

Product Type:	Expression Plasmids
Product Name:	NVL (NM_206840) Human Tagged ORF Clone
Tag:	Myc-DDK
Symbol:	NVL
Synonyms:	NVL2
Mammalian Cell Selection:	Neomycin
Vector:	pCMV6-Entry (PS100001)
E. coli Selection:	Kanamycin (25 ug/mL)



[View online »](#)

ORF Nucleotide Sequence:

>RC219929 representing NM_206840
 Red=Cloning site Blue=ORF Green=Tags(s)

TTTTGTAATACGACTCACTATAGGGCGGCCGGAATTCGTGACTGGATCCGGTACCGAGGAGATCTGCC
 GCC**CGGATCGCC**

ATGGAAGACTACCCAGATCCACAGTCAGCAAATCACATGAACAGTTCCTGCTGCTTTATATCGGAAAG
 GAAATCCTGATTCTGTTTCAAATACTCCTGAGATGGAGCAAAGAGAAACCACTCTCAACACCACGGAT
 AAGTTCAAAAACAGGCTCCATTCCCTTGAAGACCCTGCCAAAGATTCTGAAGGAGGATGGTTTATTGAC
 AAAACCCCAAGTGTAAAGAAAGACAGTTTTTTCTTGGACCTGTCATGTGAGAAAAGTAATCCTAAGAAGC
 CAATAACTGAGATACAGGATTCAAAGATTCTTCTTTTTGGAGAGTGATATGAAACGGAAAGGCAAGCT
 AAAGAATAAAGGAAGCAAAGGAAGAAAGAAGATCTTCAGGAAGTAGATGGAGAAATTGAAGCTGCCTG
 CAAAAGAAAGCTAAAGCCAGGGGTTAGAATCCAGATCTCAACGTGAAGTTTGAAGATGTGGGAGGCA
 ATGATATGACATTAAGAGAGTCTGCAAGATGCTCATAACATGCGTCACCCGGAGGTGTACCACCACT
 GGGCGTGTGCCCTCGTGGAGTTCTCTTCATGGACCACCAGGCTGTGGGAAGACATTACTTGCACAT
 GCAATTGCTGGGGAACCTGACCTGCCAATTTTGAAGTGGCTGCTCCAGAGATTGTGTCTGGAGTATCCG
 GAGAGTCTGAGCAGAAGCTGAGAGAAGTATTTGAGCAAGCTGTGTCAAATGCACCATGTATCATTTCAT
 TGATGAAATTGATGCTATTACCCCAAAAAGAGAAGTGGCTTCAAAGATATGGAACGAAGAATTGTAGCC
 CAACTCCTAACCTGCATGGATGATCTGAATAATGTGGTGTCTACAGCCCGGGTCCTAGTTATTGGAGCTA
 CTAAATCGACCAGACTCGTTAGACCCTGCTTTGAGACGTGCGGGAAGGTTGACCCGAGAAATATGCCTAGG
 TATCCCAGATGAAGCATCCAGGGAAGAATACTTCAAACATTGTGCAGAAAAGTGGCTTCTCAAGCT
 TTTGATTTCTGCACTTAGCACACCTAACTCCAGGCTTTGTTGGTGTGATCTCATGGCACTGTGCCGAG
 AGGCAGCAATGTGTGCACTCAATAGAGTCTTAATGAAGCTACAGGAACAGCAGAAGAAAAATCTGAAAT
 GGAAGATTTGCCATCTAAAGGAGTCCAGGAGGAAAGGCTGGGAAGTGGCCACTTCTGAAACACAGGAT
 GAATTACAAAGGCTGCTGGGTTGCTAAGAGACCAAGATCCCCTCTCAGAGGAGCAGATGCAAGGACTGT
 GCATTGAACTGAATGATTTCAATGTTGCTATCCTCAGTCCAACCTCTGCCAAAAGGGAAGGCTTTGT
 CACTGTCCCTAATGTGACATGGGCAGATATTGGTGCCTGGAAGACATTAGAGAGGAGCTCACCATGGCA
 ATATTGGCACCAGTACGCAACCCAGACCAGTTCAAAGCTCTTGGATTGGTACTCCAGCTGGGGTCTCC
 TTGCTGGTCTCCTGGCTGTGGGAAGACTCTGCTGGCGAAGGCTGTTGCAAATGAGTCCGGACTAAATTT
 TATATCTGTCAAGGGCCCGAATTACTAAACATGTATGTTGGTGAAGTGAACGTGCTGTGCGACAAGTT
 TTTCAACGAGCCAAGAAGTCAAGACCCTGTGTGATATTCTTTGATGAAGTGGATGCTTTATGTCTCGAA
 GATCAGACCGAGAGACAGGGCAAGTGTCCGAGTGGTGAATCAGCTACTTACAGAGATGGATGGTCTGGA
 AGCAGCCAGCAGGTTTTTATTATGGCAGCCACTAACAGGCCAGATATAATTGACCTGCAATCCTGCGC
 CCGGGCCGCTGGACAAAACACTGTTTGTGGGTTTACCGCCCCTGCAGATCGCCTTGCCATCTTAAAAA
 CTATCACAAAAATGGTACCAAACCACCCTGGATGCAGATGTAATTTGGAAGCAATTGCTGGTACCT
 TCGCTGTGATTGCTATACGGGCGCAGATCTCTGCTTTGGTACGAGAAGCTTCTATCTGTGCCCTGAGA
 CAGGAAATGGCAAGACAGAAGAGTGGAAATGAAAAAGGTGAACCTAAGGTTAGTCATAAGCATTTTGAAG
 AAGCTTTCAAGAAAGTAAAGATCATCTATATCAAAAAGGATCAAATCATGTATGAACGTTTGCAGGATC
 CCTCAGCCGG

ACGCGTACGCGGCCGCTCGAGCAGAAACTCATCTCAGAAGAGGATCTGGCAGCAAATGATATCCTGGATT
 ACAAGGATGACGACGATAAGGTTTAA

Protein Sequence: >RC219929 representing NM_206840
Red=Cloning site Green=Tags(s)

```
MEDYDPDQSANHMNSSL LSL YRKGNPDSVSNTPEME QRETT SSTPRISSKTGSIPLKTPAKDSEGGWFID
KTPSVKKDSFFLDL SCEKSNPKK PITEIQD SKDSSLLESDMKRKGKLNKKGSKRKKEDLQEVDGEIEAVL
QKKAKARGLEFQI SNVKFEDVGGNDMTL KEVCKMLIHMHRHPEVYHHLGVVPPRGVLLHGPPGCGKTL LAH
AIAGELDLPILKVA APEIVSGVSGESEQLRELFEQAVSNAPCIIFIDEIDAITPKREVASKDMERRIVA
QLLTCMDDLNNVA ATARVLVIGATNRPDSLDPALRRAGRF DREICLGIPDEASRERILQTL CRKLRLPQA
FDFCHLAHLTPGFV GADLMALCREAAMCAVNRVLMKLQEQQKNPEMEDLPSKGVQEERLGT EPTSETQD
ELQRLGLLRDQDPL SEEQMQLCIELNDFIVALSSVQPSAKREGFVTVPNVTWADIGALEDIREELTMA
ILAPVRNPDQFKAL GLVTPAGVLLAGPPGCGKTL LAKAVANESGLNFISVKGPELLNMYVGESERAVRQV
FQRAKNSAPCVIFF DEVDALCPRRS DRETGASVRVVNQLL TEMDGL EARQQVF IMAATNRPDIIDPAILR
PGRLDKTLFVGLPPP ADRLAILKTI TKNGTKPPLDADVNLEAIAGDLRCDCYTGADLSALVREASICALR
QEMARQKSGNEKGELKVSHKHFE EAFKKVRSSISKKDQIMYERLQESLSR
```

TRTRPLEQKLISEEDLAANDILDYKDDDDKV

Chromatograms: https://cdn.origene.com/chromatograms/mk8020_g03.zip

Restriction Sites: SgfI-MluI

Cloning Scheme:

Cloning sites used for ORF Shuttling:



* The last codon before the Stop codon of the ORF

ACCN: NM_206840

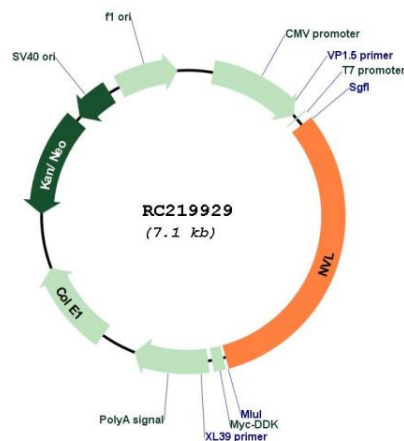
ORF Size: 2250 bp

OTI Disclaimer: The molecular sequence of this clone aligns with the gene accession number as a point of reference only. However, individual transcript sequences of the same gene can differ through naturally occurring variations (e.g. polymorphisms), each with its own valid existence. This clone is substantially in agreement with the reference, but a complete review of all prevailing variants is recommended prior to use. [More info](#)

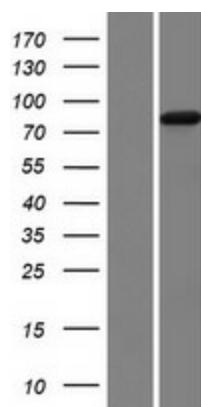
OTI Annotation: This clone was engineered to express the complete ORF with an expression tag. Expression varies depending on the nature of the gene.

Components:	The ORF clone is ion-exchange column purified and shipped in a 2D barcoded Matrix tube containing 10ug of transfection-ready, dried plasmid DNA (reconstitute with 100 ul of water).
Reconstitution Method:	<ol style="list-style-type: none"> 1. Centrifuge at 5,000xg for 5min. 2. Carefully open the tube and add 100ul of sterile water to dissolve the DNA. 3. Close the tube and incubate for 10 minutes at room temperature. 4. Briefly vortex the tube and then do a quick spin (less than 5000xg) to concentrate the liquid at the bottom. 5. Store the suspended plasmid at -20°C. The DNA is stable for at least one year from date of shipping when stored at -20°C.
RefSeq:	<u>NM_206840.2</u> , <u>NP_996671.1</u>
RefSeq Size:	2847 bp
RefSeq ORF:	2253 bp
Locus ID:	4931
UniProt ID:	<u>O15381</u>
Cytogenetics:	1q42.11
MW:	82.6 kDa
Gene Summary:	This gene encodes a member of the AAA (ATPases associated with diverse cellular activities) superfamily. Multiple transcript variants encoding different isoforms have been found for this gene. Two encoded proteins, described as major and minor isoforms, have been localized to distinct regions of the nucleus. The largest encoded protein (major isoform) has been localized to the nucleolus and shown to participate in ribosome biosynthesis (PMID: 15469983, 16782053), while the minor isoform has been localized to the nucleoplasm. [provided by RefSeq, Aug 2011]

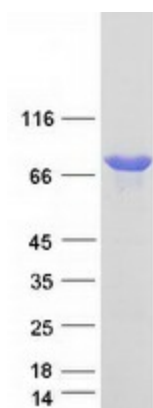
Product images:



Circular map for RC219929



Western blot validation of overexpression lysate (Cat# [LY404238]) using anti-DDK antibody (Cat# [TA50011-100]). Left: Cell lysates from untransfected HEK293T cells; Right: Cell lysates from HEK293T cells transfected with RC219929 using transfection reagent MegaTran 2.0 (Cat# [TT210002]).



Coomassie blue staining of purified NVL protein (Cat# [TP319929]). The protein was produced from HEK293T cells transfected with NVL cDNA clone (Cat# RC219929) using MegaTran 2.0 (Cat# [TT210002]).