

Product datasheet for RC219923

FOXD4L2 (FOXD4L4) (NM_199244) Human Tagged ORF Clone

Product data:

Product Type:	Expression Plasmids
Product Name:	FOXD4L2 (FOXD4L4) (NM_199244) Human Tagged ORF Clone
Tag:	Myc-DDK
Symbol:	FOXD4L2
Synonyms:	bA460E7.2; FOXD4b; FOXD4L2
Mammalian Cell Selection:	Neomycin
Vector:	pCMV6-Entry (PS100001)
E. coli Selection:	Kanamycin (25 ug/mL)
ORF Nucleotide Sequence:	>RC219923 representing NM_199244 Red=Cloning site Blue=ORF Green=Tags(s)

TTTTGTAATACGACTCACTATAGGGCGGCCGGAATTCGTCGACTGGATCCGGTACCGAGGAGATCTGCC
GCC**CGATCGCC**

ATGAACCTGCCAAGAGCTGAGCGCCCTCGCTCCACACCGCAGCGCAGCCTCCGGGACTCCGATGGGGAAG
ACGGTAAAATCGATGTCTGGGAGAGGAGGAAGATGAAGACGAGGTGGAAGACGAGGAGGAGGAGGCGAG
ACAGCAGTTCTAGAGCAGTCGCTCCAGCCGGGCTGCAGGTGGCCCGTGGGGCGGGTTCGCTTCCC
CGAGAGCACATCGAGGGCGCGCGGCCGAGTGACCTTCAGAGTTTGGCACCAAGTTCAGGGCACCGC
CAAGGTCTGCGGGCCCTCTGAAGATGCCCGCAGCCGCAAGCCCCCTACTCGTACATCGCGCTCAT
CACCATGGCCATCCTGCAAAACCCGCACAAGCGCCTCACGCTCAGCGCATCTGCGCCTTATTAGTGGC
CGTTCACATACTACCGCCGAAGTTCCCCGCCTGGCAGAACAGCATCCGCCACAACCTCTCGTGAACG
ACTGTTCTGTTAAGATCCCCCGGAGCCGGGCCACCCAGGCAAGGGCAACTACTGGAGCCTGGACCCCGC
CTCCCAGGACATGTTGCAATGGCAGCTTCTCCGGCGTAGGAAGCGTTTCAAGCGCCACCAACTGACC
CCGGGAGCCACCTGCCCAACCCCTTCCCTTACTCTGTCACACGCCGCCCTGCACAACCCCAACCCAG
GCCCTCTGCTTGGGGCCCTGCCCGCCGAGCCAGTCCCGGGGCTACCCCAACACCGCCCGGGGAG
ACGCCCTTACGCTCTGCTGCACCCGATCCTCTCGCTACCTACTGCTCTCGGCCCGCTATGCCGGG
GCACCGAAGAAAGCAGAAGGCGCGGACCTGGCGACCCCGCACCCCTTCCCGTGTGCAGCCCTCACTTGG
TCCTCAGCCTTGGGAGGAGGGCAAGGGTCTGGCGTCGCCACCGGAGGCGGATGCTTCTTTAGCATT
GAGAGTATTATGAAGGGTCAAGGGTCAAGGGGAGCGGTACAGGGGCTGCCGAGAGTTTGTCCCGACCGGTGGA
GCTACTGCCACCTGCTCCAGCGACCATCAAGCCTGTTGCATCCCCAAACCGCTGCCCTTTGCTGCAAGT
GTCCGCCCGCTGCTGCTCGGACAATTTGCAGCAATAGCAGCAGCATCAGGAGGACTGCGCAACGGC
TGCGCTCCACCAAGGGCGCGGTGCTGGGCGGCCACCTGTCCGCTCGTCCGGCGCTGC

ACGGTACGGCGCCGCTCGAGCAGAACTCATCTCAGAAGAGGATCTGGCAGCAATGATATCCTGGATT
ACAAGGATGACGACGATAAGGTTTAA



[View online »](#)

Protein Sequence: >RC219923 representing NM_199244
Red=Cloning site Green=Tags(s)

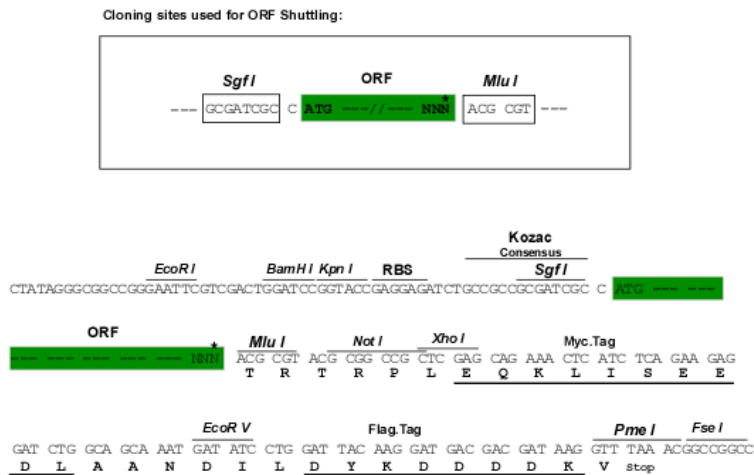
MNLPRERPRSTPQRSLRDSGDGDKIDVLGEEDEDEVEDEEEEARQQFLEQSLQPLQVARWGGVALP
 REHIEGGGSPDPSEFGTKFRAPPRSAASEDARQPAKPPYSYIALITMAILQNPBKRLTLSGICAFISG
 RFPYYRRKFPWQNSIRHNLSLNDCFVKIPREPGHPGKGNYSWLDPASQDMFDNGSFLRRRKRFRHQLT
 PGAHLPHFPPLPAAHAALHNHPHPGPLLGAAPPQVPGAYPNTAPGRRPYALLHPHPLRYLLLSARVYAG
 APKKAEGADLATPAPFCCSPHLVLSLGRRARVWRRHREADASLSALRVLCCKGSGERVQGLRRVCPRRPG
 ATATCSSDHQACCIPKPLPLCCKCPPLLLLGQFCSSSSIRRTAAPTAAALPPRARCWAGTCRPRRR

TRTRPLEQKLISEEDLAANDILDYKDDDDKV

Chromatograms: https://cdn.origene.com/chromatograms/mk8020_a01.zip

Restriction Sites: SgfI-MluI

Cloning Scheme:



* The last codon before the Stop codon of the ORF

ACCN: NM_199244

ORF Size: 1248 bp

OTI Disclaimer: The molecular sequence of this clone aligns with the gene accession number as a point of reference only. However, individual transcript sequences of the same gene can differ through naturally occurring variations (e.g. polymorphisms), each with its own valid existence. This clone is substantially in agreement with the reference, but a complete review of all prevailing variants is recommended prior to use. [More info](#)

OTI Annotation: This clone was engineered to express the complete ORF with an expression tag. Expression varies depending on the nature of the gene.

Components: The ORF clone is ion-exchange column purified and shipped in a 2D barcoded Matrix tube containing 10ug of transfection-ready, dried plasmid DNA (reconstitute with 100 ul of water).

- Reconstitution Method:**
1. Centrifuge at 5,000xg for 5min.
 2. Carefully open the tube and add 100ul of sterile water to dissolve the DNA.
 3. Close the tube and incubate for 10 minutes at room temperature.
 4. Briefly vortex the tube and then do a quick spin (less than 5000xg) to concentrate the liquid at the bottom.
 5. Store the suspended plasmid at -20°C. The DNA is stable for at least one year from date of shipping when stored at -20°C.

RefSeq: [NM_199244.3](#), [NP_954714.2](#)

RefSeq Size: 3109 bp

RefSeq ORF: 1251 bp

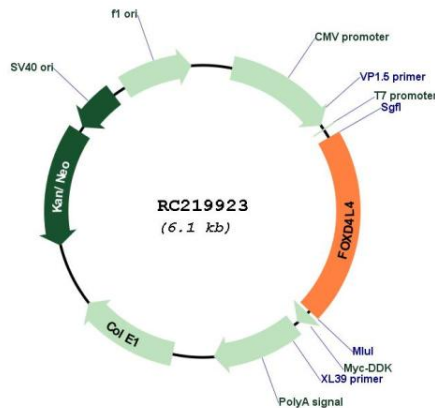
Locus ID: 349334

UniProt ID: [Q8WXT5](#)

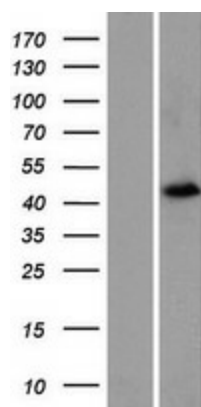
Cytogenetics: 9q21.11

MW: 45.7 kDa

Product images:



Circular map for RC219923



Western blot validation of overexpression lysate (Cat# [LY404312]) using anti-DDK antibody (Cat# [TA50011-100]). Left: Cell lysates from untransfected HEK293T cells; Right: Cell lysates from HEK293T cells transfected with RC219923 using transfection reagent MegaTran 2.0 (Cat# [TT210002]).