

Product datasheet for **RC219906**

USP22 (NM_015276) Human Tagged ORF Clone

Product data:

Product Type:	Expression Plasmids
Product Name:	USP22 (NM_015276) Human Tagged ORF Clone
Tag:	Myc-DDK
Symbol:	USP22
Synonyms:	USP3L
Mammalian Cell Selection:	Neomycin
Vector:	pCMV6-Entry (PS100001)
E. coli Selection:	Kanamycin (25 ug/mL)



[View online »](#)

ORF Nucleotide Sequence:

>RC219906 representing NM_015276
 Red=Cloning site Blue=ORF Green=Tags(s)

TTTTGTAATACGACTCACTATAGGGCGGCCGGAATTCGTCGACTGGATCCGGTACCGAGGAGATCTGCC
 GCC**CGGATCGCC**

ATGGTGTCCCGGCCAGAGCCCGAGGGCGAGGCCATGGACGCCGAGCTGGCGGTAGCGCCCGGGCTGT
 CGCACCTGGGCAGCTTCAAGGTGGACAACCTGGAAGCAGAACCTGCGGGCCATCTACCAGTCTTCGTGTG
 GAGCGGCACGGCTGAGGCCCGCAAGCGCAAGGCCAAGCTCTGTATCTGCCATGTCTGTGGCGTCCACCTC
 AACAGGCTGCATTCTGCCTCTACTGTGTCTTCTCGGCTGTTTCACAAAGAAGCATATTCACGAGCATG
 CGAAGGCGAAGCGGCACAACCTGGCCATTGATCTGATGTATGGAGGCATCTACTGTTTTCTGTGCCAGGA
 CTACATCTATGACAAAGACATGGAATAATCGCCAAGGAGGAGCAGCGAAAAGCTTGAAAATGCAAGGC
 GTTGGAGAGAAGTTTTCAACTTGGGAACCAACCAACGGGAGCTTGAAGTCTGAAGCACAACCCGAAAA
 GGAGAAAGATCACCTCGAACTGCACCATAGGTCTGCGTGGGCTGATCAACCTTGGGAACACATGTTTCAT
 GAACTGCATCGTGCAGGCCCTGACCCACACGCCACTTCTGCGGGACTTCTTCTGTCTGACAGGCACCGC
 TGTGAGATGCAGAGCCCCAGCTCCTGTCTGGTCTGTGAGATGTCCCTCACTGTTTCAGGAGTTTTACTCTG
 GACACCGTCCCCTCACATCCCCTATAAGTTGCTGCACCTGGTGTGGACCCACGCGAGGCACCTAGCAGG
 CTACGAGCAGCAGGACGCCACGAGTTCCTCATCGCGCCCTGGACGTGCTCCACCGACACTGCAAAGGT
 GATGACAAATGGGAAGAAGGCCAACAACCCCAACCACTGCAACTGCATCATAGACCAGATCTTCACAGGCG
 GGTTGCAGTCAGACGTCACCTGCCAAGTCTGCCATGGAGTCTCCACCACCATCGACCCCTTCTGGGACAT
 CAGCTTGGATCTCCCGGCTCTCCACCCATTCTGGCCCTGAGCCAGGGAGCGAGGGCAACGTGGTA
 AACGGGAAAGCCACGTGTGGGAACCAACGCTCACGGAGTCCCTGCGACGATTACACAGACCAGAGC
 ACTTGGGCAGCAGCGCCAAGATCAAGTGCAGCGTTGCCATAGCTACCAGGAGTCCACAAGCAGCTCAC
 TATGAAGAAACTGCCCATCGTAGCCTGTTTTTCATCTCAAACGATTTGAACACTCAGCCAAGCTGCGGCGG
 AAGATCACACGTATGTGTCTTCCCCTGGAGCTGGACATGACCCCTTTCATGGCTCCAGCAAAGAGA
 GCAGGATGAATGGACGTACCAGCAGCCACGGACAGTCTCAACAATGACAACAAGTATTCCTGTTTGC
 TGTTGTTAACCATCAAGGGACCTTGGAGAGTGGCCACTACACCAGCTTTATCCGGCAGCACAAGACCAG
 TGGTTCAAGTGTGACGATGCCATCATCACAAGGCCAGCATCAAGGACGCTCTGGACAGCGAAGGGTACT
 TGCTGTTCTATCACAACAGTTCCTGGAATACGAG

ACGCGTACGCGGCCGCTCGAGCAGAAACTCATCTCAGAAGAGGATCTGGCAGCAAATGATATCTGGATT
 ACAAGGATGACGACGATAAGGTTTAA

Protein Sequence:

>RC219906 representing NM_015276
 Red=Cloning site Green=Tags(s)

MVSRPEPEGEAMDAELAVAPPGCSHLGSKVDNWKQNLRAIYQCFVWSGTAEARKRKAKSCICHVCGVHL
 NRLHSCLYCVFFGCFTKKHIHEHAKAKRHNLAIDLMYGGIYCFQCQDYIYDKDMEIIAKEEQRKAWKMQG
 VGEKFSTWEPTKRELELLKHNPKRRKITSNCTIGLRGLINLGNTCFMNCIVQALTHTPLLRDFFLSDRHR
 CEMQSPSSCLVCEMSSLFQEFYSGHRSPHIPYKLLHLVWTHARHLAGYEQQDAHEFLIAALDVLHRHCKG
 DDNGKKANNPNHCNCIIDQIFTGGLQSDVTCQVCHGVSTTIDPFWDISLDLPGSSPFWPLSPGSEGNV
 NGESHSVSGTTTLTDLRRFTRPEHLGSSAKIKCSGCHSYQESTKQLTMKKLPVACFHLKRFEHSKLR
 KITTYVSFPLELDMTPFMASKE SRMNGYQQPTDSLNNDNKYSLFAVNNHQGTLES GHYTSFIRQHKDQ
 WFKCDDAIITKASIKDVL DSEGYLLFYHKQFLEYE

TRTRPLEQKLISEEDLAANDILDYKDDDDKV

Chromatograms:

https://cdn.origene.com/chromatograms/mg2780_a01.zip

Restriction Sites:

Sgfl-MluI

Cloning Scheme:


ACCN: NM_015276

ORF Size: 1575 bp

OTI Disclaimer: Due to the inherent nature of this plasmid, standard methods to replicate additional amounts of DNA in E. coli are highly likely to result in mutations and/or rearrangements. Therefore, OriGene does not guarantee the capability to replicate this plasmid DNA. Additional amounts of DNA can be purchased from OriGene with batch-specific, full-sequence verification at a reduced cost. Please contact our customer care team at custsupport@origene.com or by calling 301.340.3188 option 3 for pricing and delivery.

The molecular sequence of this clone aligns with the gene accession number as a point of reference only. However, individual transcript sequences of the same gene can differ through naturally occurring variations (e.g. polymorphisms), each with its own valid existence. This clone is substantially in agreement with the reference, but a complete review of all prevailing variants is recommended prior to use. [More info](#)

OTI Annotation: This clone was engineered to express the complete ORF with an expression tag. Expression varies depending on the nature of the gene.

Components: The ORF clone is ion-exchange column purified and shipped in a 2D barcoded Matrix tube containing 10ug of transfection-ready, dried plasmid DNA (reconstitute with 100 ul of water).

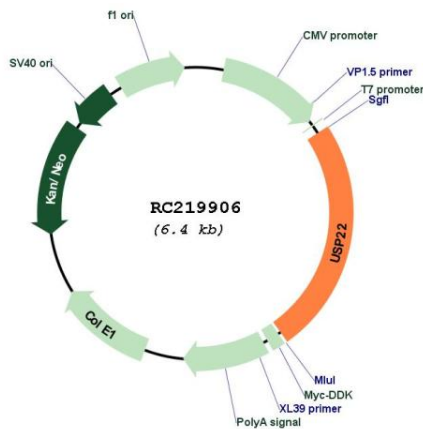
- Reconstitution Method:**
1. Centrifuge at 5,000xg for 5min.
 2. Carefully open the tube and add 100ul of sterile water to dissolve the DNA.
 3. Close the tube and incubate for 10 minutes at room temperature.
 4. Briefly vortex the tube and then do a quick spin (less than 5000xg) to concentrate the liquid at the bottom.
 5. Store the suspended plasmid at -20°C. The DNA is stable for at least one year from date of shipping when stored at -20°C.

RefSeq: [NM_015276.1](#), [NP_056091.1](#)

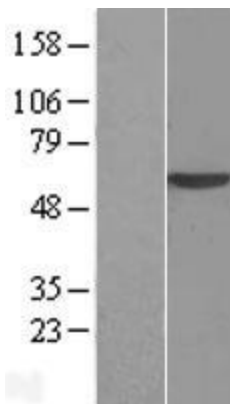
RefSeq Size: 5220 bp
RefSeq ORF: 1578 bp
Locus ID: 23326
UniProt ID: [Q9UPT9](#)
Cytogenetics: 17p11.2
Protein Families: Protease
MW: 59.8 kDa

Gene Summary: Histone deubiquitinating component of the transcription regulatory histone acetylation (HAT) complex SAGA. Catalyzes the deubiquitination of both histones H2A and H2B, thereby acting as a coactivator. Recruited to specific gene promoters by activators such as MYC, where it is required for transcription. Required for nuclear receptor-mediated transactivation and cell cycle progression.[UniProtKB/Swiss-Prot Function]

Product images:



Circular map for RC219906



Western blot validation of overexpression lysate (Cat# [LY414666]) using anti-DDK antibody (Cat# [TA50011-100]). Left: Cell lysates from untransfected HEK293T cells; Right: Cell lysates from HEK293T cells transfected with RC219906 using transfection reagent MegaTran 2.0 (Cat# [TT210002]).