

Product datasheet for **RC219904**

PCDHA13 (NM_018904) Human Tagged ORF Clone

Product data:

Product Type:	Expression Plasmids
Product Name:	PCDHA13 (NM_018904) Human Tagged ORF Clone
Tag:	Myc-DDK
Symbol:	PCDHA13
Synonyms:	CNR5; CNRN5; CNRS5; CRNR5; PCDH-ALPHA13
Mammalian Cell Selection:	Neomycin
Vector:	pCMV6-Entry (PS100001)
E. coli Selection:	Kanamycin (25 ug/mL)



[View online »](#)

ORF Nucleotide Sequence:

>RC219904 representing NM_018904
 Red=Cloning site Blue=ORF Green=Tags(s)

TTTTGTAATACGACTCACTATAGGGCGGCCGGGAATTCGTCGACTGGATCCGGTACCGAGGAGATCTGCC
 GCCCGCATCGCC

ATGCTGTCTTCTGGCAAGGAGGCCAAGACCGCGGCAACTACTGCTCTGGCTTCTGATCCTCGCAGCCT
 GGGAGACGGGTAGTGGCCAGCTCCACTACTCCGTCGCCGAGGAAGCAAAACACGGCACCTTCGTGGGCCG
 CATCGCTCAGGACCTGGGGCTGGAGCTGGCGGAGCTGGTGCCGCGCTGTTCCGGGTGGCGTCCAAAAGA
 CACGGGGACCTTCTGGAGGTAATCTGCAGAATGGCATTGTTGTTGTGAATTCTCGGATCGACCGGAGG
 AGCTGTGTGGCGGAGCGCGGAGTGCAGCATCCACCTGGAGGTGATCGTGGACAGGCCTCTGCAGGTTTT
 CCATGTGGAGGTGAAGGTGAGGGACATTAACGACAACCCGCCATATTCCTGAAAGCAAGAAACGAATA
 ATCATTGCAGAATCTAGACCTCCGAAACTCGATTTCCACTAGATGGCGCATCCGATGCAGATATTGGAG
 TAAACTCGGCATTGACCTACCGACTGGATCCCAACGATTATTTCACTTTGGACGCACAAAACAGTCTTGA
 GCAAAATGTCTTATTACTTGTACTGAGGAAAACACTGGACAGAGAGGAAATTCAGGAACATAGTTTA
 TTAAGTACAGCCAGTGTGGAGGTAACCCGAGCTGACTGGCACAGTTCAGCTGCTCATCACGATTCTGG
 ACGTGAATGACAACGCCCGGAATTTACCAATCCGTTTATAAAGTGACGGTGTAGAGAACGCCTTCAA
 TGGAACATTAGTGATCAAGCTAAATGCCACAGATCCTGATGATGGTACAAATGGAGATATAGTTTACTCA
 TTTAGAAGGCCTGTATGGCCTGCAGTGGTATATGCATTTACCATAAATCCGAACAATGGAGAAATAGGA
 CAAAAGGCAAACCTAGATTTCAAGAAAAGAAATATATGAAATATCCGTGGAGGCAGTTGACAAAAGGAAA
 TATTCCAATGGCGGGTATTGTACCCCTTTGGTGAAGTACTAGATGTAATGATAACGCCCCAGAGGTT
 ACCACTACTTCTTTGCACTCCCATCAGAGAAGACACTCAGCCTAGCGCCATTATTGCCCTAATCAGTG
 TGTCGATCGTGACTCTGGCTCAATGGACAGGTCACTGCACCTTGCACCGCATGTCCCCTTCAAGT
 GGTGTCCACCTACAAGAATACTACTCATTAGTCTGGACAGCGCCCTGGACCCGAGAGCGTATCAGCC
 TATGAAGTGGTGGTGACCGCGGGACGGGGCTCGCCTTCGCTGTGGGCCACGGCCAGCGTGTCCGGTGG
 GGTGGCCGACGTGAACGACAACCGCGCGGCTTCGCGCAGCCGAGTACACGGTGTTCGTGAAGGAAAA
 CAATCCGCGGGCTGCCACATCTTACGGTGTCTGCTCAGGACCGGACGCACAGGAGAACCGCTGGTC
 TCCTACTCGTGGTGGAGCGGGTGGCGAGCGTGCCTGTGAGCTACGTGTCCGGTGCACGCGGAGA
 GCGGCAAGGTGTACGCGTGCAGCCGTTGGACCAGGAGCTGGAGCTGTTGCAGTTCAGGTGAGCGC
 GCGGACTCTGGCGTCCGCTCTGGCAGCAACGTGACGCTGCAGGTGTTCTGTCTGGACGAGAACGAC
 AACGCTCCGGCGTGTGACGCCGGGGTGGCAGCGCGGAGGCACAGTGCAGGCTGATGCCCGGT
 CGGTGGGTGCAGCCACGTGGTGGCAAGGTGCGCGCGGTGGACGCCGATTTCGGGTACAATGCGTGGCT
 TTCGATGAATTGCAGCTGGCGCGGTGGCGCGCATCCCCTTCGCGTGGGGCTGTACTGCGGAG
 ATCAGCACGACGCGCCCTCTGGACGAGGTGGACGCGCCGACCACCGCTTCTGGTGTGGTGAAGGACC
 ACGGTGAGCCCGCTGACGGCCACGGCAACGGTGTGTTGTGCTGGTGGAGAGCGGCCAAGCGCCACA
 GGCTTCGTCGAGGGCGTCCGAGCGCTGTGGTCCAGAAGCGCGCTGGTGGATGTCAATGTTTACTTG
 ATCATTGCCATCTGCGCGGTGTCCAGCCTGTTGGTGTCCAGTTGCTGTATACTGCGCTGCGGTGCT
 CGGCACCGCCACCGAGGGCGCTGCGCGCCGGCAAGCCACTAGTGTGCTCCAGCGCGCAGGGAG
 TTGGTCGACTCGCAGCAGAGGGCGCCGAGGTTGCTCTGGGAGGGCCCGCATAAAGCGGACCTCATG
 GCCTTCAGTCCCAGCCTTCTCCTTGTCTGGGTTCTGCAGAGGAAACAGGCCAGAGGGAGGACTCAG
 AATGCTTGAAAGAGCCACGACAGCCCAACCTGACTGGCGTACTCTGCCTCCCTGAGAGCAGGCATGCA
 CAGCTCTGTGCACCTAGAGGAGGCTGGCATTCTACGGGCTGGTCCAGGAGGCTGATCAGCAGTGGCCA
 ACAGTATCCAGTGAACACCAGAACCAGAGGCAGGAGAAGTGTCCCTCCAGTCCGTGCGGGTGTCAACA
 GCAACAGCTGGACCTTTAAATACGGACCAGGCAACCCCAACAATCCGGTCCCGGTGAGTTGCCCGACA
 ATTATTATCCCAGGATCTCTGCAATCATCTCCATCCGGCAGGAGCCTACTAACAGCCAAATTGACAAA
 AGTGACTTCATAACCTTCGGCAAAAAGGAGGAGACCAAGAAAAAGAAAAAGAAAGGGTAACAAGA
 CCCAGGAGAAAAAGAGAAAGGGAACAGCAGACTGACAACAGTGACCAG

ACGCGTACGCGGGCGCTCGAGCAGAACTCATCTCAGAAGAGGATCTGGCAGCAAATGATATCCTGGATT
 ACAAGGATGACGACGATAAGGTTTAA

Protein Sequence: >RC219904 representing NM_018904
 Red=Cloning site Green=Tags(s)

MLSSWQGGPRPRQLLLWLLILAAWETGSGQLHYSVPPEAKHGTFVGRIAQDLGLELAELVPRLFRVASKR
 HGDLLLEVLNQLNGILFVNSRIDREELCGRSAECSIHLEVI VDRPLQVFHVEVKVRDINDNPPIFPESKKRI
 IIAESRPPETRFPLDASDADIGVNSALTYRLDPNDYFTLDAQNSLEQMSLSLVLKRLDREEIQEHS
 LLTASDGGKPELTGTVQLLITILDVNDNAPEFYQSVYKVTVLENAFNGTLVIKLNATDPDDGTNGDIVYS
 FRRPVWPAVVYAF TINPNNGEIRTKGKLD FE EKLYEISVEAVDKGNIPMAGHCTLLVEVLDVNDNAPEV
 TITSLSLPIREDTQPSAIIALISVSDRDSGSGVQTCTLTPHVPFKLVSTYKNYSLVLDSALDRESVSA
 YELVVTARDGGSPSLWATASVSVGVADVNDNAPAFAPQPEYTVFVKENPPGCHIFTVSAQDADAQENALV
 SYSLVERRVGERALSSYVSVHAESGKVYALQPLDHEEELLELLQFQVSARDSGVPPLGSNVTLQVFLDEND
 NAPALLTPGAGSAGGTVSELMPRSVGAGHVVAKVRADVADSGYNWL SYELQLAAVGARIPFRVGLYTGE
 ISTTRPLDEVDAPHHRLVLVKDHGEPALTATATVLLSLVESGQAPQASSRASAGAVGPEAALVDNVYL
 IIAICAVSLLVLTLLLYTALRCSAPPTGACAPGKPTLVCSAAGSWSYSQRRRPRVCSGEGPHKTDLM
 AFSPSPCLGSAEGTGQREEDSECLKEPRQPNPDWRYSASLRAGMHSSVHLEEAGILRAGPGGPDQQPW
 TVSSATPEPEAGEVSPPVGAGVNSNSWTFKYGPNPKQSGPGELPKDFIIPGSPAIISIRQPTNSQIDK
 SDFITFGKKEETKKKKKKKKGNKTQEKKEKGNSTTDNSDQ

TRTRPLEQKLISEEDLAANDILDYKDDDDKV

Chromatograms: https://cdn.origene.com/chromatograms/mk8019_a05.zip

Restriction Sites: SgfI-MluI

Cloning Scheme:

Cloning sites used for ORF Shuttling:



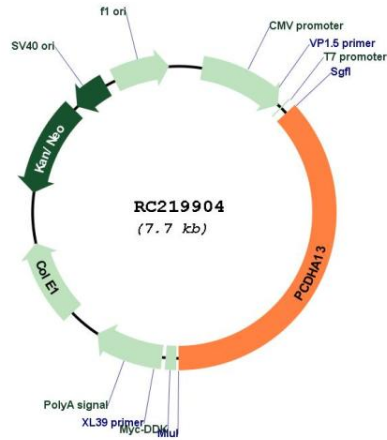
* The last codon before the Stop codon of the ORF

ACCN: NM_018904

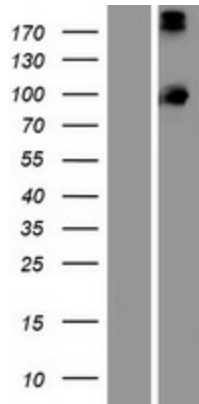
ORF Size: 2850 bp

OTI Disclaimer:	The molecular sequence of this clone aligns with the gene accession number as a point of reference only. However, individual transcript sequences of the same gene can differ through naturally occurring variations (e.g. polymorphisms), each with its own valid existence. This clone is substantially in agreement with the reference, but a complete review of all prevailing variants is recommended prior to use. More info
OTI Annotation:	This clone was engineered to express the complete ORF with an expression tag. Expression varies depending on the nature of the gene.
Components:	The ORF clone is ion-exchange column purified and shipped in a 2D barcoded Matrix tube containing 10ug of transfection-ready, dried plasmid DNA (reconstitute with 100 ul of water).
Reconstitution Method:	<ol style="list-style-type: none">1. Centrifuge at 5,000xg for 5min.2. Carefully open the tube and add 100ul of sterile water to dissolve the DNA.3. Close the tube and incubate for 10 minutes at room temperature.4. Briefly vortex the tube and then do a quick spin (less than 5000xg) to concentrate the liquid at the bottom.5. Store the suspended plasmid at -20°C. The DNA is stable for at least one year from date of shipping when stored at -20°C.
RefSeq:	NM_018904.3
RefSeq Size:	5260 bp
RefSeq ORF:	2853 bp
Locus ID:	56136
UniProt ID:	Q9Y5I0
Cytogenetics:	5q31.3
MW:	99.2 kDa
Gene Summary:	This gene is a member of the protocadherin alpha gene cluster, one of three related gene clusters tandemly linked on chromosome five that demonstrate an unusual genomic organization similar to that of B-cell and T-cell receptor gene clusters. The alpha gene cluster is composed of 15 cadherin superfamily genes related to the mouse CNR genes and consists of 13 highly similar and 2 more distantly related coding sequences. The tandem array of 15 N-terminal exons, or variable exons, are followed by downstream C-terminal exons, or constant exons, which are shared by all genes in the cluster. The large, uninterrupted N-terminal exons each encode six cadherin ectodomains while the C-terminal exons encode the cytoplasmic domain. These neural cadherin-like cell adhesion proteins are integral plasma membrane proteins that most likely play a critical role in the establishment and function of specific cell-cell connections in the brain. Alternative splicing has been observed and additional variants have been suggested but their full-length nature has yet to be determined. [provided by RefSeq, Jul 2008]

Product images:



Circular map for RC219904



Western blot validation of overexpression lysate (Cat# [LY412916]) using anti-DDK antibody (Cat# [TA50011-100]). Left: Cell lysates from untransfected HEK293T cells; Right: Cell lysates from HEK293T cells transfected with RC219904 using transfection reagent MegaTran 2.0 (Cat# [TT210002]).