

Product datasheet for **RC219898**

FUT2 (NM_000511) Human Tagged ORF Clone

Product data:

Product Type:	Expression Plasmids
Product Name:	FUT2 (NM_000511) Human Tagged ORF Clone
Tag:	Myc-DDK
Symbol:	FUT2
Synonyms:	B12QTL1; SE; Se2; SEC2; sej
Mammalian Cell Selection:	Neomycin
Vector:	pCMV6-Entry (PS100001)
E. coli Selection:	Kanamycin (25 ug/mL)
ORF Nucleotide Sequence:	>RC219898 representing NM_000511 Red=Cloning site Blue=ORF Green=Tags(s)

TTTTGTAATACGACTCACTATAGGGCGGCCGGAATTCGTCGACTGGATCCGGTACCGAGGAGATCTGCC
GCC**CGATCGCC**

ATGCTGGTCGTTTCAGATGCCTTTCTCCTTTCCCATGGCCACTTCATCCTCTTTGTCTTTACGGTTTCCA
CTATATTTACGTTTCAGCAGCGGCTAGCGAAGATTCAAGCCATGTGGGAGTTACCGGTGCAGATACCAGT
GCTAGCCTCAACATCAAAGGCACTGGGACCCAGCCAGCTCAGGGGATGTGGACGATCAATGCAATAGGC
CGCCTGGGAACAGATGGCGAGTACGCCACACTGTACGCCCTGGCCAAGATGAACGGGCGCCCGCCT
TCATCCCGGCCAGATGCACAGCACCTGGCCCCATCTCAGAATCACCTGCCGGTGTGCACAGCGC
CAGGCCAGCAGGATCCCTGGCAGAATACCACCTGAATGACTGGATGGAGGAGGAATACCGCCACTTC
CCTGGGGAGTACGTCCGTTTACCAGGCTACCCCTGCTCCTGGACCTTCTACCACCACCTCCGCCAGGAGA
TCCTCCAGGAGTTCACCTGCACGACCAGTGCAGGAGGAGGCCAGAAGTTCCTGCGGGGCTGCAGGT
GAACGGGAGCCGGCCGGGCACCTTTGTAGGGTCCATGTTTCGCCGAGGGGACTATGTCCATGTATGCCA
AAAGTGTGAAGGGGTGGTGGCCGACCGGCGATACCTACAGCAGGCCCTGGACTGGTCCGAGCTCGCT
ACAGCTCCCTCATCTTCGTGGTACCAGTAATGGCATGGCCTGGTGTGGGAGAACATTGACACCTCCCA
CGGTGATGTGGTGTGGTGGCGATGGCATTGAGGGCTCACCTGCCAAAGATTTTGTCTACTCACACAG
TGTAACCACCCATCATGACCATTTGGGACGTTGGGATCTGGCCGCATACCTCAGGGCGGAGACCA
TCTACCTGGCCAATTACACCCTCCCGACTCCCTTTTCTCAAATCTTTAAGCCAGAGGACGCTTCT
GCCGGAGTGGACAGGATTGCCGACAGCTGTCCCTTACTCAAGCAC

ACGCGTACGCGGCCGCTCGAGCAGAACTCATCTCAGAAGAGGATCTGGCAGCAATGATATCCTGGATT
ACAAGGATGACGACGATAAGGTTTAA



[View online »](#)

Protein Sequence: >RC219898 representing NM_000511
Red=Cloning site Green=Tags(s)

MLVVQMPFSFPM AHFILFVFTVSTIFHVQQRLAKIQAMWELPVQIPVLASTSKALGPSQLRGMWTINAIG
 RLG NQMGEYATLYALAKMNGRPAFIPAQM HSTLAPIFRITLPVLHSATASRIPWQNYHLNDWMEEEYRHF
 PGEYVRF TGYPCSWTFYHHLRQEILQEFTLHDHVREEAQKFLRGLQVNGSRPGTFVGVHVRRGDYVHVMP
 KVVKGVVADRRYLQQALDWFRARYSSLIFVVT SNGMAWCRENIDTSHGDVVVFAGDGI EGSPAKDFALLTQ
 CNHTIMTIGTFGIWAAYLTGGDTIYLAN YTLPDSFLKIFKPEAAFLPEWTGIAADLSP LLLKH

TRTRPLEQKLISEEDLAANDILDYKDDDDKV

Chromatograms: https://cdn.origene.com/chromatograms/mk6563_a09.zip

Restriction Sites: SgfI-MluI

Cloning Scheme:



ACCN: NM_000511

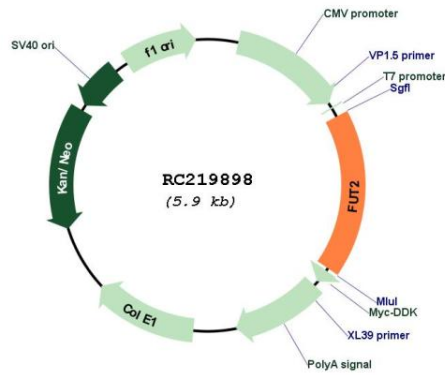
ORF Size: 1029 bp

OTI Disclaimer: Due to the inherent nature of this plasmid, standard methods to replicate additional amounts of DNA in E. coli are highly likely to result in mutations and/or rearrangements. Therefore, OriGene does not guarantee the capability to replicate this plasmid DNA. Additional amounts of DNA can be purchased from OriGene with batch-specific, full-sequence verification at a reduced cost. Please contact our customer care team at custsupport@origene.com or by calling 301.340.3188 option 3 for pricing and delivery.

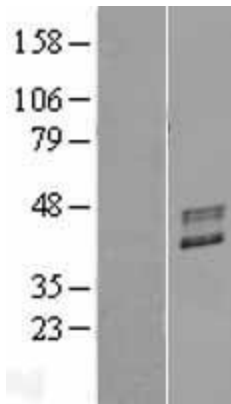
The molecular sequence of this clone aligns with the gene accession number as a point of reference only. However, individual transcript sequences of the same gene can differ through naturally occurring variations (e.g. polymorphisms), each with its own valid existence. This clone is substantially in agreement with the reference, but a complete review of all prevailing variants is recommended prior to use. [More info](#)

OTI Annotation:	This clone was engineered to express the complete ORF with an expression tag. Expression varies depending on the nature of the gene.
Components:	The ORF clone is ion-exchange column purified and shipped in a 2D barcoded Matrix tube containing 10ug of transfection-ready, dried plasmid DNA (reconstitute with 100 ul of water).
Reconstitution Method:	<ol style="list-style-type: none">1. Centrifuge at 5,000xg for 5min.2. Carefully open the tube and add 100ul of sterile water to dissolve the DNA.3. Close the tube and incubate for 10 minutes at room temperature.4. Briefly vortex the tube and then do a quick spin (less than 5000xg) to concentrate the liquid at the bottom.5. Store the suspended plasmid at -20°C. The DNA is stable for at least one year from date of shipping when stored at -20°C.
RefSeq:	NM_000511.6
RefSeq Size:	3088 bp
RefSeq ORF:	1032 bp
Locus ID:	2524
UniProt ID:	Q10981
Cytogenetics:	19q13.33
Protein Families:	Druggable Genome, Transmembrane
Protein Pathways:	Glycosphingolipid biosynthesis - globo series, Glycosphingolipid biosynthesis - lacto and neolacto series, Metabolic pathways
MW:	38.8 kDa
Gene Summary:	The protein encoded by this gene is a Golgi stack membrane protein that is involved in the creation of a precursor of the H antigen, which is required for the final step in the soluble A and B antigen synthesis pathway. This gene is one of two encoding the galactoside 2-L-fucosyltransferase enzyme. Two transcript variants encoding the same protein have been found for this gene. [provided by RefSeq, Jul 2008]

Product images:



Circular map for RC219898



Western blot validation of overexpression lysate (Cat# [LY424669]) using anti-DDK antibody (Cat# [TA50011-100]). Left: Cell lysates from untransfected HEK293T cells; Right: Cell lysates from HEK293T cells transfected with RC219898 using transfection reagent MegaTran 2.0 (Cat# [TT210002]).