

Product datasheet for RC219897

ZFYVE27 (NM_001002261) Human Tagged ORF Clone

Product data:

Product Type:	Expression Plasmids
Product Name:	ZFYVE27 (NM_001002261) Human Tagged ORF Clone
Tag:	Myc-DDK
Symbol:	ZFYVE27
Synonyms:	PROTRUDIN; SPG33
Mammalian Cell Selection:	Neomycin
Vector:	pCMV6-Entry (PS100001)
E. coli Selection:	Kanamycin (25 ug/mL)
ORF Nucleotide Sequence:	>RC219897 representing NM_001002261 Red=Cloning site Blue=ORF Green=Tags(s)

TTTTGTAATACGACTCACTATAGGGCGGCCGGAATTCGTCGACTGGATCCGGTACCGAGGAGATCTGCC
GCC**CGATCGCC**

ATGCAGACATCAGAACGTGAGGGGAGTGGGCCGGAGCTGAGCCCCAGCGTGATGCCCGAGGCTCCCCTGG
AGTCTCCACCTTTTCTACCAAGTCCCCAGCGTTTGACCTTTTCAACTTGGTTCTCTCTACAAGAGGCT
GGAGATCTACCTGGAACCCTTGAAGGATGCAGGTGATGGTGTTCGATACTTGCTCAGGTGGCAGATGCCT
TTGTGTTCTTGTGACCTGCCCTGGCCCTCAACGTCCTTGTCTCACTTTGAATGAGGGTGCATGGTACT
CAGTAGGTGCCCTGATGATTTTCAGTGCCCGCCCTGCTGGGCTACCTTCAGGAGGTTTGCCGGGCACGGCT
GCCTGATTCGAGCTGATGCGGAGGAAGTATCATAGCGTGAGGCAGGAGGACCTGCAGAGAGGTCGCCTG
TCTCGTCCCAGGCCGTGGCTGAGGTGAAGAGCTTCTTGATCCAGCTGGAGGCCCTTCTGAGCCGCCTGT
GCTGCACATGTGAAGCCGCTACCGCGTGTGCACTGGGAGAACCCCGTGTGCTCCTCACAGTTCTATGG
GGCTCTTCTGGGCACAGTCTGCATGCTGTATTTGCTGCCACTCTGCTGGGTTCTCACCTTTTAAACAGC
ACGCTCTTCTGGGGAATGTGGAGTTCTCCGAGTTGTGTCTGAGTACAGGGCATCTCTGCAGCAGAGGA
TGAACCCAAAGCAGGAAGAGCATGCCTTGAAGAGTCTCCACCACCAGATGTTGGGGGAAGGATGGTCT
GATGGACAGCACGCTGCCCTCACACCCACGGAGAGTCTCTTCCCAGGACCTCACACCGGCACGGCTG
GAGGAGGCTGAGGAGGCTGAGCCAGATGAAGAGTTTAAAGATGCGATTGAGGAGACCCACTTGGTGGTGC
TGGAGGATGATGAGGGCGCCCGTGCAGCAGAGGATGAGCTGGCCCTGCAGGACAACGGGTTCCCTGAG
CAAGAATGAGGTGCTGCGCAGCAAGGTGTCTCGGCTCACGGAGCGGCTCCGCAAGCGCTACCCACCAAC
AACTTCGGGAACTGCACGGGCTGCTCGGCCACCTTCTCAGTGCTGAAGAAGAGGGCGAGCTGCAGTAATT
GTGGAACAGCTTCTGCTCTCGATGCTGCTCCTTCAAGGTGCCAAAGTCTCCATGGGGCCACAGCCCC
TGAAGCCAGAGGGAGACTGTGTTGTGTGCTCGTGTAAACCAGACCTTGAGCAAG

ACGCGTACGCGGCCGCTCGAGCAGAACTCATCTCAGAAGAGGATCTGGCAGCAATGATATCCTGGATT
ACAAGGATGACGACGATAAGGTTTAA



[View online >](#)

Protein Sequence: >RC219897 representing NM_001002261
Red=Cloning site Green=Tags(s)

MQTSEREGSGPELSPVMPPEAPLESPPFPKSPAFLDNLVLSYKRLIYLEPLKDAGDGVRYLLRWQMP
 LCSSLTCLGLNVLFLTLNEGAWYSVGLMISVPALLGYLQEVCRARLPDSELMRRKYHSVRQEDLQRGRL
 SRPEAVAEVKSFLIQLEAFLSRLCCTCEAAAYRVLHWENPVVSSQFYGALLGTVCMLYLLPLCWVLTLLNS
 TLFLGNVEFFRVVSEYRASLQQRMNPKQEEHAFESPPPPDVGGKDGMLDSTPALTPTESLSSQDLTPGSV
 EEAEAEAPDEEFKDAIEETHLVLEDEGAPCAEDELALQDNGFLSKNEVLRKVSRLTERLRKRYPTN
 NFGNCTGCSATFSVLKKRRSCSNCGNSFCRCCSFKVPKSSMGATAPEAQRETQVFCASCNQTLISK

TRTRPLEQKLISEEDLAANDILDYKDDDDKV

Chromatograms: https://cdn.origene.com/chromatograms/mk8058_d01.zip

Restriction Sites: SgfI-MluI

Cloning Scheme:



* The last codon before the Stop codon of the ORF

ACCN: NM_001002261

ORF Size: 1248 bp

OTI Disclaimer: The molecular sequence of this clone aligns with the gene accession number as a point of reference only. However, individual transcript sequences of the same gene can differ through naturally occurring variations (e.g. polymorphisms), each with its own valid existence. This clone is substantially in agreement with the reference, but a complete review of all prevailing variants is recommended prior to use. [More info](#)

OTI Annotation: This clone was engineered to express the complete ORF with an expression tag. Expression varies depending on the nature of the gene.

Components: The ORF clone is ion-exchange column purified and shipped in a 2D barcoded Matrix tube containing 10ug of transfection-ready, dried plasmid DNA (reconstitute with 100 ul of water).

Reconstitution Method:

1. Centrifuge at 5,000xg for 5min.
2. Carefully open the tube and add 100ul of sterile water to dissolve the DNA.
3. Close the tube and incubate for 10 minutes at room temperature.
4. Briefly vortex the tube and then do a quick spin (less than 5000xg) to concentrate the liquid at the bottom.
5. Store the suspended plasmid at -20°C. The DNA is stable for at least one year from date of shipping when stored at -20°C.

RefSeq: [NM_001002261.3](#), [NP_001002261.1](#)

RefSeq Size: 3045 bp

RefSeq ORF: 1251 bp

Locus ID: 118813

UniProt ID: [Q5T4F4](#)

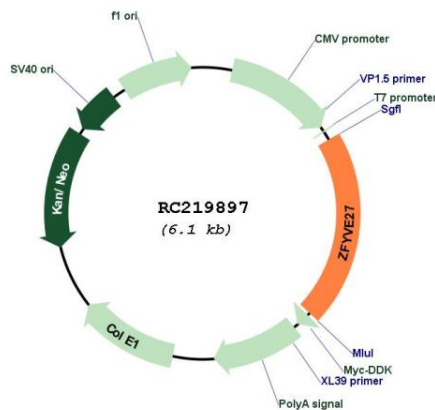
Cytogenetics: 10q24.2

Protein Families: Transmembrane

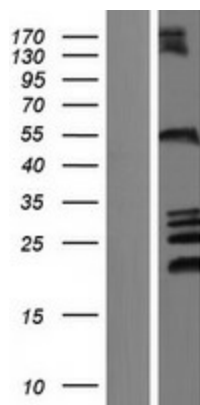
MW: 46.2 kDa

Gene Summary: This gene encodes a protein with several transmembrane domains, a Rab11-binding domain and a lipid-binding FYVE finger domain. The encoded protein appears to promote neurite formation. A mutation in this gene has been reported to be associated with hereditary spastic paraplegia, however the pathogenicity of the mutation, which may simply represent a polymorphism, is unclear. [provided by RefSeq, Mar 2010]

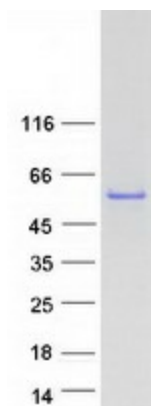
Product images:



Circular map for RC219897



Western blot validation of overexpression lysate (Cat# [LY424194]) using anti-DDK antibody (Cat# [TA50011-100]). Left: Cell lysates from untransfected HEK293T cells; Right: Cell lysates from HEK293T cells transfected with RC219897 using transfection reagent MegaTran 2.0 (Cat# [TT210002]).



Coomassie blue staining of purified ZFYVE27 protein (Cat# [TP319897]). The protein was produced from HEK293T cells transfected with ZFYVE27 cDNA clone (Cat# RC219897) using MegaTran 2.0 (Cat# [TT210002]).