

## Product datasheet for RC219896

### RAX (NM\_013435) Human Tagged ORF Clone

#### Product data:

Product Type:	Expression Plasmids
Product Name:	RAX (NM_013435) Human Tagged ORF Clone
Tag:	Myc-DDK
Symbol:	RAX
Synonyms:	MCOP3; RX
Mammalian Cell Selection:	Neomycin
Vector:	pCMV6-Entry (PS100001)
E. coli Selection:	Kanamycin (25 ug/mL)
ORF Nucleotide Sequence:	>RC219896 representing NM_013435 Red=Cloning site Blue=ORF Green=Tags(s)

TTTTGTAATACGACTCACTATAGGGCGGCCGGAATTCGTCGACTGGATCCGGTACCGAGGAGATCTGCC  
GCC**CGCATCGCC**

ATGCACCTGCCGGGCTGCGCGCCAGCCATGGCCGACGGGAGCTTCTCGTTGCCGGCCACCTGCTCCGCA  
GCCCGGGCGGGAGCACCTCGGACTTCACAGCATCGAGGCCATCTGGGGTTTACCAAGGACGACGGGAT  
CCTCGGCACCTTCCCGGCGGAGCGGGCGCCCGGGGCGCAAGGAGCGGGATAGGAGGCTGGCGCGCGG  
CCCGCTGCCCAAGGCGCCGAGGAAGGCTCCGAGCCCTCCCGCGCCAGCCCGCGCCCGCCCGCC  
AGTACGAAGCCCTCGACCTACTGCCCAAGGAGCCCGGGAGGCACGCGCGAGCCAGGGCTGCCCGT  
CGGGCCAGCCACCGGCGAAGCGAACTGTGAGAGGAGAAACAGCCCAAGAAAAGCATCGGCGGAACCGC  
ACGACTTTCACCAGTACCAGCTGCATGAGCTGGAGCGCGGTTTCGAGAAGTCCCCTACCCGGAGCTGT  
ACAGCCGCGAGGAGCTGGCCGGCAAGGTCAACCTACCAGAGGTCCGGGTCCAGGTGTGGTTCCAGAACC  
ACGGGCTAAGTGGCGGCGCAGGAGAAGCTGGAAGTGTCTCCATGAAGCTGCAGGACTCGCCCTCCTC  
TCCTTCAGCCGCTCCCGCCCTCCGCGACGCTGTCCCGCTCGGGGCGGGCCCGGCGAGCGGTGGCGGGC  
CGGCTGGGGCGCGCTGCCGCTGGAGTCTGGCTCGGGCCCGCGTCCGGGCGGGGGCGCCACGGCGCT  
GCAGAGCTGCCGGGCTTCGGCCCGCGGCGCAGAGCTGCCTGCCAGCTACACGCCACCGCCCGCCCT  
CCGCCCTCCTGAACCTCCCGCCGTTGGGCCCGGCTGCAACCTCTCGCGCCCGCGCCCTCCTACC  
CGTCCGGGCGCGCTTCGGGACAAGTTCCTCGCTGGACGAGGCGGACCCGCGCAACAGCATCGCGGC  
GCTGCGTCTGAAAGCAAGGAGCACATCCAGGCCATCGGGAAGCCGTGGCAGGCCCTC

**ACGCGT**ACGCGGCGGCTCGAGCAGAACTCATCTCAGAAGAGGATCTGGCAGCAATGATATCCTGGATT  
ACAAGGATGACGACGATAAGGTTTAA



[View online »](#)

**Protein Sequence:** >RC219896 representing NM\_013435  
Red=Cloning site Green=Tags(s)

MHLPGCAPAMADGSFSLAGHLLRSPGGSTRLHSIEAILGFTKDDGILGTFPAERGARGAKERDRRLGAR  
 PACPKAPEEGSEPSPPPAPAPAEYEAPRPYCPKEPGEARPSGLPVGPATGEAKLSEEEQPKKKHRRNR  
 TTFTTYQLHELERAFAEKSHYPDVYSREELAGKVNLEPEVRVQVWFQNRRAKWRRQEKLEVSSMKLQDSPLL  
 SFSRSPPSATLSPLGAGPGSGGGPAGGALPLESWLGPPLPGGGATALQSLPGFGPPAQSLPASYPPTPPPP  
 PPFLNSPPLGGLQLAPPPPSYPCGPGFGDKFPLDEADPRNSSIAALRLKAKEHIQAIGKPWQAL

TRTRPLEQKLISEEDLAANDILDYKDDDDKVV

**Chromatograms:** [https://cdn.origene.com/chromatograms/mg2794\\_c01.zip](https://cdn.origene.com/chromatograms/mg2794_c01.zip)

**Restriction Sites:** SgfI-MluI

**Cloning Scheme:**



**ACCN:** NM\_013435

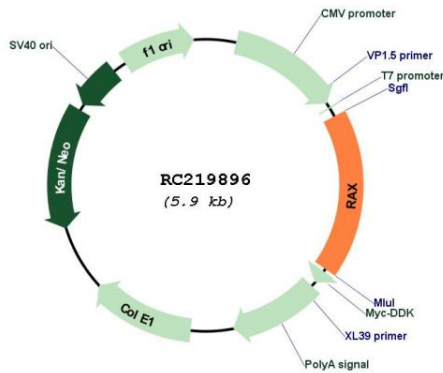
**ORF Size:** 1038 bp

**OTI Disclaimer:** Due to the inherent nature of this plasmid, standard methods to replicate additional amounts of DNA in E. coli are highly likely to result in mutations and/or rearrangements. Therefore, OriGene does not guarantee the capability to replicate this plasmid DNA. Additional amounts of DNA can be purchased from OriGene with batch-specific, full-sequence verification at a reduced cost. Please contact our customer care team at [custsupport@origene.com](mailto:custsupport@origene.com) or by calling 301.340.3188 option 3 for pricing and delivery.

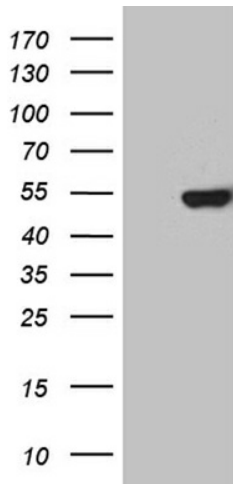
The molecular sequence of this clone aligns with the gene accession number as a point of reference only. However, individual transcript sequences of the same gene can differ through naturally occurring variations (e.g. polymorphisms), each with its own valid existence. This clone is substantially in agreement with the reference, but a complete review of all prevailing variants is recommended prior to use. [More info](#)

<b>OTI Annotation:</b>	This clone was engineered to express the complete ORF with an expression tag. Expression varies depending on the nature of the gene.
<b>Components:</b>	The ORF clone is ion-exchange column purified and shipped in a 2D barcoded Matrix tube containing 10ug of transfection-ready, dried plasmid DNA (reconstitute with 100 ul of water).
<b>Reconstitution Method:</b>	<ol style="list-style-type: none"><li>1. Centrifuge at 5,000xg for 5min.</li><li>2. Carefully open the tube and add 100ul of sterile water to dissolve the DNA.</li><li>3. Close the tube and incubate for 10 minutes at room temperature.</li><li>4. Briefly vortex the tube and then do a quick spin (less than 5000xg) to concentrate the liquid at the bottom.</li><li>5. Store the suspended plasmid at -20°C. The DNA is stable for at least one year from date of shipping when stored at -20°C.</li></ol>
<b>RefSeq:</b>	<a href="#">NM_013435.3</a>
<b>RefSeq Size:</b>	1775 bp
<b>RefSeq ORF:</b>	1041 bp
<b>Locus ID:</b>	30062
<b>UniProt ID:</b>	<a href="#">Q9Y2V3</a>
<b>Cytogenetics:</b>	18q21.32
<b>Protein Families:</b>	Druggable Genome
<b>MW:</b>	36.5 kDa
<b>Gene Summary:</b>	This gene encodes a homeobox-containing transcription factor that functions in eye development. The gene is expressed early in the eye primordia, and is required for retinal cell fate determination and also regulates stem cell proliferation. Mutations in this gene have been reported in patients with defects in ocular development, including microphthalmia, anophthalmia, and coloboma.[provided by RefSeq, Oct 2009]

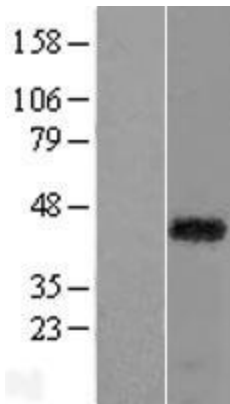
Product images:



Circular map for RC219896



HEK293T cells were transfected with the pCMV6-ENTRY control (Cat# [PS100001], Left lane) or pCMV6-ENTRY RAX (Cat# RC219896, Right lane) cDNA for 48 hrs and lysed. Equivalent amounts of cell lysates (5 ug per lane) were separated by SDS-PAGE and immunoblotted with anti-RAX. (1:2(Cat# [TA811068])). Positive lysates [LY415546] (100ug) and [LC415546] (20ug) can be purchased separately from OriGene.



Western blot validation of overexpression lysate (Cat# [LY415546]) using anti-DDK antibody (Cat# [TA50011-100]). Left: Cell lysates from untransfected HEK293T cells; Right: Cell lysates from HEK293T cells transfected with RC219896 using transfection reagent MegaTran 2.0 (Cat# [TT210002]).