

Product datasheet for RC219889

CXorf27 (HYPM) (NM_012274) Human Tagged ORF Clone

Product data:

Product Type:	Expression Plasmids
Product Name:	CXorf27 (HYPM) (NM_012274) Human Tagged ORF Clone
Tag:	Myc-DDK
Symbol:	CXorf27
Synonyms:	CXorf27; HIP17; HYPM
Mammalian Cell Selection:	Neomycin
Vector:	pCMV6-Entry (PS100001)
E. coli Selection:	Kanamycin (25 ug/mL)
ORF Nucleotide Sequence:	>RC219889 representing NM_012274 Red=Cloning site Blue=ORF Green=Tags(s)

TTTTGTAATACGACTCACTATAGGGCGGCCGGAATTCGTCGACTGGATCCGGTACCGAGGAGATCTGCC
 GCCCGCATCGCC

ATGTCAGAGAAAAAGAACTGTAAGAACTCGTCTACAAATAACAACCAGACTCAAGACCCTTCTAGAAATG
 AGCTACAGGTCCCTAGGAGCTTCGTGGACCGCTTGTGCAAGATGAACGAGACGTCCAAAGCCAGAGTTC
 CTCCACAATAAATACCCTCCTTACCTTGCTCGATTGCCTTGCTGACTACATCATGGAGCGGGTAGGCTTG
 GAGGCCAGCAACAATGGCAGTATGCGCAACACTTCACAAGATAGGGAGAGAGAAGTGACAACAACCGTG
 AGCCCCACAGCGCTGAGAGTGATGTGACTCGCTTTTGTGTTGATGAGATGCCCAATCCAGGAAGAATGA
 C

ACGCGTACGCGGCCGCTCGAGCAGAACTCATCTCAGAAGAGGATCTGGCAGCAATGATATCCTGGATT
 ACAAGGATGACGACGATAAGGTTTAA

Protein Sequence:	>RC219889 representing NM_012274 Red=Cloning site Green=Tags(s)
-------------------	--

MSEKKNCKNSSTNNQTDQPSRNLQVPRSFVDRVVQDERDVQSQSSTINTLLTLLDCLADYIMERVGL
 EASNNGSMRNTSQDREREVDNNREPHSAESDVTRFLFDEMPKSRKND

TRTRPLEQKLISEEDLAANDILDYKDDDDKV

Chromatograms:	https://cdn.origene.com/chromatograms/mk8019_a11.zip
----------------	---

Restriction Sites:	SgfI-MluI
--------------------	-----------


[View online »](#)

Cloning Scheme:


ACCN: NM_012274

ORF Size: 351 bp

OTI Disclaimer: The molecular sequence of this clone aligns with the gene accession number as a point of reference only. However, individual transcript sequences of the same gene can differ through naturally occurring variations (e.g. polymorphisms), each with its own valid existence. This clone is substantially in agreement with the reference, but a complete review of all prevailing variants is recommended prior to use. [More info](#)

OTI Annotation: This clone was engineered to express the complete ORF with an expression tag. Expression varies depending on the nature of the gene.

Components: The ORF clone is ion-exchange column purified and shipped in a 2D barcoded Matrix tube containing 10ug of transfection-ready, dried plasmid DNA (reconstitute with 100 ul of water).

Reconstitution Method:

1. Centrifuge at 5,000xg for 5min.
2. Carefully open the tube and add 100ul of sterile water to dissolve the DNA.
3. Close the tube and incubate for 10 minutes at room temperature.
4. Briefly vortex the tube and then do a quick spin (less than 5000xg) to concentrate the liquid at the bottom.
5. Store the suspended plasmid at -20°C. The DNA is stable for at least one year from date of shipping when stored at -20°C.

Note: Plasmids are not sterile. For experiments where strict sterility is required, filtration with 0.22um filter is required.

RefSeq: [NM_012274.2](#)

RefSeq Size: 517 bp

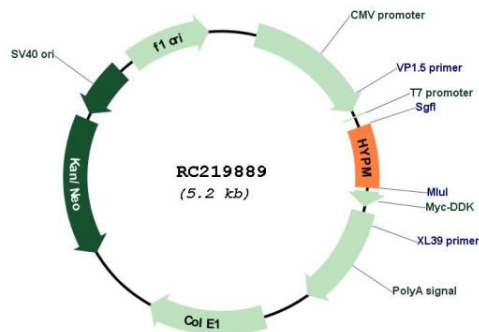
RefSeq ORF: 354 bp

Locus ID: 25763
 UniProt ID: [O75409](#)
 Cytogenetics: Xp11.4

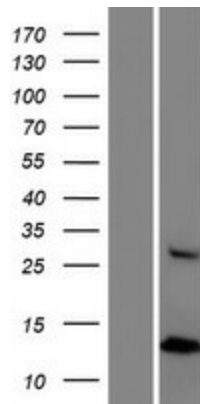
MW: 13.3 kDa

Gene Summary: This gene encodes a protein shown to interact with huntingtin, which contains an expanded polyglutamine tract in individuals with Huntington's disease (PMID: 9700202). [provided by RefSeq, Aug 2011]

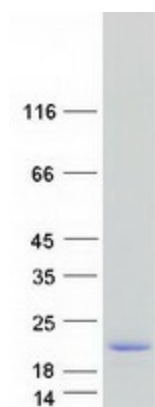
Product images:



Circular map for RC219889



Western blot validation of overexpression lysate (Cat# [LY415843]) using anti-DDK antibody (Cat# [TA50011-100]). Left: Cell lysates from untransfected HEK293T cells; Right: Cell lysates from HEK293T cells transfected with RC219889 using transfection reagent MegaTran 2.0 (Cat# [TT210002]).



Coomassie blue staining of purified HYPM protein (Cat# [TP319889]). The protein was produced from HEK293T cells transfected with HYPM cDNA clone (Cat# RC219889) using MegaTran 2.0 (Cat# [TT210002]).