

Product datasheet for RC219882

RHBDL2 (NM_017821) Human Tagged ORF Clone

Product data:

Product Type:	Expression Plasmids
Product Name:	RHBDL2 (NM_017821) Human Tagged ORF Clone
Tag:	Myc-DDK
Symbol:	RHBDL2
Synonyms:	RRP2
Mammalian Cell Selection:	Neomycin
Vector:	pCMV6-Entry (PS100001)
E. coli Selection:	Kanamycin (25 ug/mL)
ORF Nucleotide Sequence:	>RC219882 representing NM_017821 Red=Cloning site Blue=ORF Green=Tags(s)

TTTTGTAATACGACTCACTATAGGGCGGCCGGAATTCGTCGACTGGATCCGGTACCGAGGAGATCTGCC
GCC**CGCATCGCC**

ATGGCTGCTGTTTCATGATCTGGAGATGGAGAGCATGAATCTGAATATGGGGAGAGAGATGAAAGAAGAGC
TGGAGGAAGAGGAGAAAATGAGAGAGGATGGGGGAGGTAAGATCGGGCCAAGAGTAAAAAGGTCCACAG
GATTGTCTCAAAATGGATGCTGCCGAAAAGTCCCGAGGAACATACTTGGAGAGAGCTAACTGCTTCCCG
CCTCCCGTGTTCATCATCTCCATCAGCCTGGCCGAGCTGGCAGTGTATTTACTATGCTGTGTGGAAGC
CTCAGAAACAGTGGATCACGTTGGACACAGGCATCTTGGAGAGTCCCTTTATCTACAGTCTGAGAAGAG
GGAGGAAGCCTGGAGGTTTATCTCATACATGCTGGTACATGCTGGAGTTCAGCACATCTTGGGGAATCTT
TGTATGCAGCTTGTGGGTATTCCCTTGAAAATGGTCCACAAAGGCCTCCGTGTGGGGCTGGTGTACC
TGGCAGGAGTGATTGCAGGGTCCCTTGCCAGCTCCATCTTTGACCACTCAGATATCTTGTGGGAGCTTC
AGGAGGAGTCTATGCTCTGATGGGAGGCTATTTATGAATGTTCTGGTGAATTTCAAGAAATGATTCTT
GCCTTTGGAATTTTCAGACTGCTGATCATCCTGATAATTGTGTTGGACATGGGATTTGCTCTCTATA
GAAGGTTCTTTGTTCTGAAGATGGGTCTCCGGTGTCTTTGCAGCTCACATTGCAGGTGGATTTGCTGG
AATGTCCATTGGCTACACGGTGTAGCTGCTTTGATAAAGCACTGCTGAAAGATCCAAGGTTTTGGATA
GCAATTGCTGCATATTTAGCTTGTGCTTATTTGCTGTGTTTTCAACATTTTCTATCTCCAGCAAAC

ACGCGTACGCGGCCGCTCGAGCAGAAACTCATCTCAGAAGAGGATCTGGCAGCAAATGATATCCTGGATT
ACAAGGATGACGACGATAAGGTTTAA



[View online »](#)

Protein Sequence: >RC219882 representing NM_017821
Red=Cloning site Green=Tags(s)

MAAVHDLEMESMNLNMGREMKEELEEEKMRDGGGKDRASKKVKHRIVSKWMLPEKSRGTYLERANCFP
 PPVFIISISLAELAVFIYAVWKPQKQWITLDTGILESPFIYSPEKREEAWRFISYMLVHAGVQHILGNL
 CMQLVLGIPLEMVHKGLRVGLVYLAGVIAGSLASSIFDPLRYLVGASGGVYALMGGYFMNVLVNFQEMIP
 AFGIFRLLIIILIIIVLDMGFALYRRFFVPEDGSPVSFAAHIAGGFAGMSIGYTVFSCFDKALLKDPFRFWI
 AIAAYLACVLFVFFNIFLSPAN

TRTRPLEQKLISEEDLAANDILDYKDDDDKV

Chromatograms: https://cdn.origene.com/chromatograms/mk6723_g04.zip

Restriction Sites: SgfI-MluI

Cloning Scheme:



ACCN: NM_017821

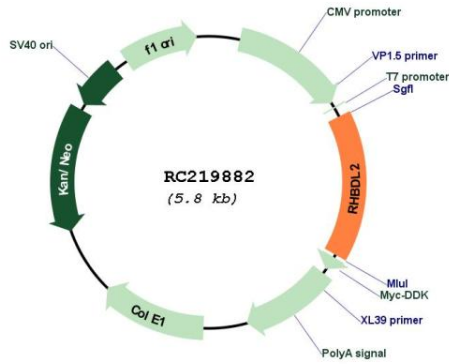
ORF Size: 909 bp

OTI Disclaimer: Due to the inherent nature of this plasmid, standard methods to replicate additional amounts of DNA in E. coli are highly likely to result in mutations and/or rearrangements. Therefore, OriGene does not guarantee the capability to replicate this plasmid DNA. Additional amounts of DNA can be purchased from OriGene with batch-specific, full-sequence verification at a reduced cost. Please contact our customer care team at custsupport@origene.com or by calling 301.340.3188 option 3 for pricing and delivery.

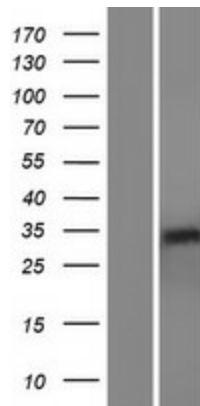
The molecular sequence of this clone aligns with the gene accession number as a point of reference only. However, individual transcript sequences of the same gene can differ through naturally occurring variations (e.g. polymorphisms), each with its own valid existence. This clone is substantially in agreement with the reference, but a complete review of all prevailing variants is recommended prior to use. [More info](#)

OTI Annotation:	This clone was engineered to express the complete ORF with an expression tag. Expression varies depending on the nature of the gene.
Components:	The ORF clone is ion-exchange column purified and shipped in a 2D barcoded Matrix tube containing 10ug of transfection-ready, dried plasmid DNA (reconstitute with 100 ul of water).
Reconstitution Method:	<ol style="list-style-type: none">1. Centrifuge at 5,000xg for 5min.2. Carefully open the tube and add 100ul of sterile water to dissolve the DNA.3. Close the tube and incubate for 10 minutes at room temperature.4. Briefly vortex the tube and then do a quick spin (less than 5000xg) to concentrate the liquid at the bottom.5. Store the suspended plasmid at -20°C. The DNA is stable for at least one year from date of shipping when stored at -20°C.
RefSeq:	NM_017821.5
RefSeq Size:	1838 bp
RefSeq ORF:	912 bp
Locus ID:	54933
UniProt ID:	Q9NX52
Cytogenetics:	1p34.3
Protein Families:	Protease, Transmembrane
MW:	33.8 kDa
Gene Summary:	The protein encoded by this gene is a member of the rhomboid family of integral membrane proteins. This family contains proteins that are related to Drosophila rhomboid protein. Members of this family are found in both prokaryotes and eukaryotes and are thought to function as intramembrane serine proteases. The encoded protein is thought to release soluble growth factors by proteolytic cleavage of certain membrane-bound substrates, including ephrin B2 and ephrin B3. Two transcript variants encoding different isoforms have been found for this gene. [provided by RefSeq, Feb 2015]

Product images:



Circular map for RC219882



Western blot validation of overexpression lysate (Cat# [LY413530]) using anti-DDK antibody (Cat# [TA50011-100]). Left: Cell lysates from untransfected HEK293T cells; Right: Cell lysates from HEK293T cells transfected with RC219882 using transfection reagent MegaTran 2.0 (Cat# [TT210002]).