

## Product datasheet for RC219879

### FAM83A (NM\_207006) Human Tagged ORF Clone

#### Product data:

Product Type:	Expression Plasmids
Product Name:	FAM83A (NM_207006) Human Tagged ORF Clone
Tag:	Myc-DDK
Symbol:	FAM83A
Synonyms:	BJ-TSA-9
Mammalian Cell Selection:	Neomycin
Vector:	pCMV6-Entry (PS100001)
E. coli Selection:	Kanamycin (25 ug/mL)
ORF Nucleotide Sequence:	>RC219879 representing NM_207006 Red=Cloning site Blue=ORF Green=Tags(s)

TTTTGTAATACGACTCACTATAGGGCGGCCGGAATTCGTCGACTGGATCCGGTACCGAGGAGATCTGCC  
GCC**CGATCGCC**

ATGAGCCGGTCAAGGCACCTGGGCAAAATCCGGAAGCGTCTGGAAGATGTCAAGAGCCAGTGGTCCGGC  
CAGCCAGGGCTGACTTTAGTGACAACGAGAGTGCCCGGCTGGCCACGGACGCCCTCTGGATGGGGTTC  
TGAAGCCTACTGGCGGTGCTCAGCCAGGAAGGCGAGGTGGACTTCTGTCTCGGTGGAGGCCAGTAC  
ATCCAGGCCCAGGCCAGGAGCCCCGTGTCCCCAGACACCCTGGGAGGGCGGAAGCAGGCCCTAAGG  
GACTGGACTCCAGTCCCTACAGTCCGGCACCTACTTCCCTGTGGCCTCAGAGGGCAGCGAGCCGGCCCT  
ACTGCACAGCTGGGCCTCAGCTGAGAAGCCCTACCTGAAGGAAAAATCCAGCGCCACTGTGTACTTCCAG  
ACCGTCAAGCACAAACATCAGAGACCTCGTCCGCCGCTGCATCACCCGACTAGCCAGGTCTGGTCA  
TCCTGATGGATGTGTTACGGATGTGGAGATCTTCTGTGACATTCTAGAGGCAGCCAACAAGCGTGGGT  
GTTCTGTTGTGTGCTCCTGGACCAGGGAGGTGTGAAGCTTCCAGGAGATGTGTGACAAAGTCCAGATC  
TCTGACAGTCACTCAAGAACATTTCCATCCGGAGTGTGAAGGAGAGATATACTGTGCCAAGTCCAGGCA  
GGAAATTCGCTGGCCAAATCCGGGAGAAGTTCATCATCTCGGACTGGAGATTTGTCTGTCTGGATCTTA  
CAGCTTACCTGGCTCTGCGGACAGTGCACCCGGAACATCCTCTCAAGTTCACAGGCCAGGCGGTGGAG  
CTGTTTGACGAGGAGTTCCGCCACCTCTACGCCTCCTCAAGCTGTGATGGGCCTGAAGTCCCCGCGG  
TGGTCCGCCCGTCCCGCCGGAGCAGCCCCGGCCAATGGCCGCTTAGCAGCAGCAGTGGCTCCGCCAG  
TGACCGCAGCTCCTCAACCCCTCAGCGGCCGCTCGGCAGGCAGCCACCCGTTCTGAAAGTAAACAA  
AACAAAACAAAAACAAAAAACAAACACTTTGGTTCCTGATGGCTTTC

**ACGCGT**ACGCGGCCGCTCGAGCAGAAACTCATCTCAGAAGAGGATCTGGCAGCAATGATATCCTGGATT  
ACAAGGATGACGACGATAAGGTTTAA



[View online »](#)

**Protein Sequence:** >RC219879 representing NM\_207006  
Red=Cloning site Green=Tags(s)

MSRSRHLGKIRKRLLEDVKSQWVRPARADFSDNESARLATDALLDGGSEAYWRVLSQEGEVDLSSVEAQY  
 IQAQAREPPCPPDTLGGAEAGPKGLDSSSLQSGTYFPVASEGSEPALHWSASAEKPYLKEKSSATVYFQ  
 TVKHNNIRDLVRRICITRTSQVLVILMDVFTDVEIFCDILEAANKRGVFCVLLDQGGVKLFQEMCDKVQI  
 SDSHLKNISIRSVEGEIYCAKSGRKFAGQIREKFIISDWRFVLSGSYSFTWLCGHVHRNILSKFTGQAVE  
 LFDEEFRHLYASSKPVMLKSPRLVAPVPPGAAPANGRLSSSSSGSASDRSSNPFSGRSAGSHPVPEKQ  
 NKTKTKKQTTLWFLMAF

TRTRPLEQKLISEEDLAANDILDYKDDDDKV

**Chromatograms:** [https://cdn.origene.com/chromatograms/mk8055\\_b06.zip](https://cdn.origene.com/chromatograms/mk8055_b06.zip)

**Restriction Sites:** SgfI-MluI

**Cloning Scheme:**



\* The last codon before the Stop codon of the ORF

**ACCN:** NM\_207006

**ORF Size:** 1101 bp

**OTI Disclaimer:** The molecular sequence of this clone aligns with the gene accession number as a point of reference only. However, individual transcript sequences of the same gene can differ through naturally occurring variations (e.g. polymorphisms), each with its own valid existence. This clone is substantially in agreement with the reference, but a complete review of all prevailing variants is recommended prior to use. [More info](#)

**OTI Annotation:** This clone was engineered to express the complete ORF with an expression tag. Expression varies depending on the nature of the gene.

**Components:** The ORF clone is ion-exchange column purified and shipped in a 2D barcoded Matrix tube containing 10ug of transfection-ready, dried plasmid DNA (reconstitute with 100 ul of water).

**Reconstitution Method:**

1. Centrifuge at 5,000xg for 5min.
2. Carefully open the tube and add 100ul of sterile water to dissolve the DNA.
3. Close the tube and incubate for 10 minutes at room temperature.
4. Briefly vortex the tube and then do a quick spin (less than 5000xg) to concentrate the liquid at the bottom.
5. Store the suspended plasmid at -20°C. The DNA is stable for at least one year from date of shipping when stored at -20°C.

**RefSeq:** [NM\\_207006.2](#), [NP\\_996889.1](#)

**RefSeq Size:** 2058 bp

**RefSeq ORF:** 1104 bp

**Locus ID:** 84985

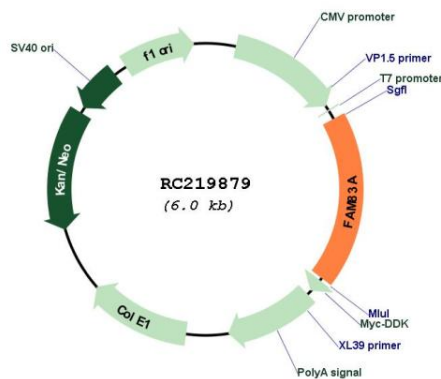
**UniProt ID:** [Q86UY5](#)

**Cytogenetics:** 8q24.13

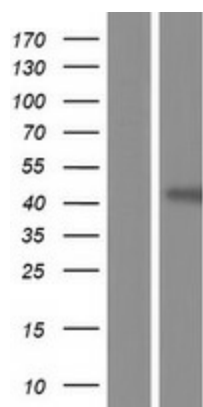
**MW:** 40.4 kDa

**Gene Summary:** Probable proto-oncogene that functions in the epidermal growth factor receptor/EGFR signaling pathway. Activates both RAS/MAPK and PI3K/AKT/TOR signaling cascades downstream of EGFR. Required for the RAS/MAPK signaling cascade activation upon EGFR stimulation, it also activates both signaling cascades independently of EGFR activation. [UniProtKB/Swiss-Prot Function]

### Product images:



Circular map for RC219879



Western blot validation of overexpression lysate (Cat# [LY404130]) using anti-DDK antibody (Cat# [TA50011-100]). Left: Cell lysates from untransfected HEK293T cells; Right: Cell lysates from HEK293T cells transfected with RC219879 using transfection reagent MegaTran 2.0 (Cat# [TT210002]).