

Product datasheet for RC219873

TCEAL1 (NM_004780) Human Tagged ORF Clone

Product data:

Product Type:	Expression Plasmids
Product Name:	TCEAL1 (NM_004780) Human Tagged ORF Clone
Tag:	Myc-DDK
Symbol:	TCEAL1
Synonyms:	p21; pp21; SIIR; WEX9
Mammalian Cell Selection:	Neomycin
Vector:	pCMV6-Entry (PS100001)
E. coli Selection:	Kanamycin (25 ug/mL)
ORF Nucleotide Sequence:	>RC219873 ORF sequence Red=Cloning site Blue=ORF Green=Tags(s)

TTTTGTAATACGACTCACTATAGGGCGGCCGGAATTCGTCGACTGGATCCGGTACCGAGGAGATCTGCC
 GCCCGCATCGCC

ATGGACAAACCACGCAAAGAAAATGAAGAAGAGCCGAGAGCGCGCCCAAGACCGATGAGGAGAGGCCTC
 CGGTGGAGCACTCTCCGAAAAGCAGTCCCCGAGGAGCAGTCTCGGAGGAGCAGTCTCGGAGGAGGA
 GTTCTTTCTGAGGAGCTCTGCCTGAGCTCTGCCTGAGATGCTCTCTCGGAGGAGCGCCCTCCGCAG
 GAGGGTCTTTCCAGGAAGGACCTGTTTGGGGGCGCCCTCCCATGGAGCAGCCTCCTTGAGGAGTAGGAA
 AACATAAGCTTGAAGAAGGAAGCTTTAAAGAAAGGTTGGCTCGTTCTCGCCGCAATTTAGAGGGGACAT
 ACATGGCAGAAATTTAAGCAATGAGGAGATGATACAGGCAGCAGATGAGCTAGAAGAGATGAAAAGAGTA
 AGAAACAACTGATGATAATGCACTGGAAGGCAAAACGGAGCCGTCCTTATCCTATT

ACGCGTACGCGGCCGCTCGAGCAGAACTCATCTCAGAAGAGGATCTGGCAGCAAATGATATCCTGGATT
 ACAAGGATGACGACGATAAGGTTTAA

Protein Sequence:	>RC219873 protein sequence Red=Cloning site Green=Tags(s)
-------------------	--

MDKPRKENEEEPQSAPKTDEERPPVEHSPEKQSPEEQSSEEQSSEEEFFPEELLPELLPEMLLSEERPPQ
 EGLSRKDLFEGRPPEQPPCGVGKHKLEEGSFKERLARSRPQFRGDIHGRNLSNEEMIQAADLEEMKRV
 RNKLMIMHWKAKRSRPYPI

TRTRPLEQKLISEEDLAANDILDYKDDDDKV

Chromatograms:	https://cdn.origene.com/chromatograms/mk6300_d01.zip
----------------	---


[View online »](#)

Restriction Sites: SgfI-MluI

Cloning Scheme:



ACCN: NM_004780

ORF Size: 477 bp

OTI Disclaimer: The molecular sequence of this clone aligns with the gene accession number as a point of reference only. However, individual transcript sequences of the same gene can differ through naturally occurring variations (e.g. polymorphisms), each with its own valid existence. This clone is substantially in agreement with the reference, but a complete review of all prevailing variants is recommended prior to use. [More info](#)

OTI Annotation: This clone was engineered to express the complete ORF with an expression tag. Expression varies depending on the nature of the gene.

Components: The ORF clone is ion-exchange column purified and shipped in a 2D barcoded Matrix tube containing 10ug of transfection-ready, dried plasmid DNA (reconstitute with 100 ul of water).

Reconstitution Method:

1. Centrifuge at 5,000xg for 5min.
2. Carefully open the tube and add 100ul of sterile water to dissolve the DNA.
3. Close the tube and incubate for 10 minutes at room temperature.
4. Briefly vortex the tube and then do a quick spin (less than 5000xg) to concentrate the liquid at the bottom.
5. Store the suspended plasmid at -20°C. The DNA is stable for at least one year from date of shipping when stored at -20°C.

Note: Plasmids are not sterile. For experiments where strict sterility is required, filtration with 0.22um filter is required.

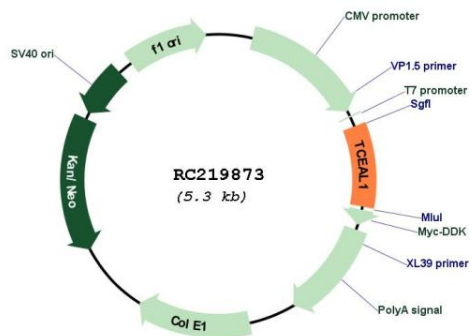
RefSeq: [NM_004780.3](#)

RefSeq Size: 1220 bp

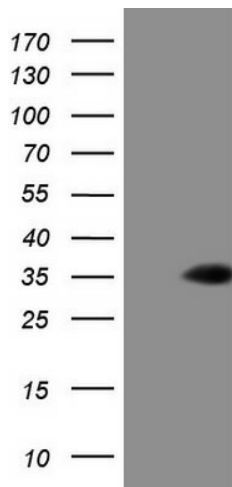
RefSeq ORF: 480 bp

Locus ID:	9338
UniProt ID:	Q15170
Cytogenetics:	Xq22.2
Protein Families:	Transcription Factors
MW:	18.6 kDa
Gene Summary:	<p>This gene encodes a member of the transcription elongation factor A (SII)-like (TCEAL) gene family. Members of this family may function as nuclear phosphoproteins that modulate transcription in a promoter context-dependent manner. The encoded protein is similar to transcription elongation factor A/transcription factor SII and contains a zinc finger-like motif as well as a sequence related to the transcription factor SII Pol II-binding region. It may exert its effects via protein-protein interactions with other transcriptional regulators rather than via direct binding of DNA. Multiple family members are located on the X chromosome. Alternative splicing results in multiple transcript variants encoding a single isoform. [provided by RefSeq, Jul 2008]</p>

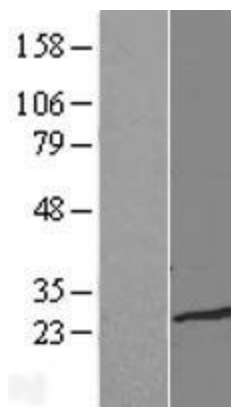
Product images:



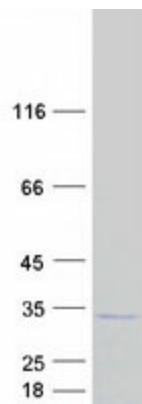
Circular map for RC219873



HEK293T cells were transfected with the pCMV6-ENTRY control (Cat# [PS100001], Left lane) or pCMV6-ENTRY TCEAL1 (Cat# RC219873, Right lane) cDNA for 48 hrs and lysed. Equivalent amounts of cell lysates (5 ug per lane) were separated by SDS-PAGE and immunoblotted with anti-TCEAL1 (Cat# [TA807701])(1:2000). Positive lysates [LY417752] (100ug) and [LC417752] (20ug) can be purchased separately from OriGene.



Western blot validation of overexpression lysate (Cat# [LY417752]) using anti-DDK antibody (Cat# [TA50011-100]). Left: Cell lysates from untransfected HEK293T cells; Right: Cell lysates from HEK293T cells transfected with RC219873 using transfection reagent MegaTran 2.0 (Cat# [TT210002]).



Coomassie blue staining of purified TCEAL1 protein (Cat# [TP319873]). The protein was produced from HEK293T cells transfected with TCEAL1 cDNA clone (Cat# RC219873) using MegaTran 2.0 (Cat# [TT210002]).