

Product datasheet for **RC219872**

MFRP (NM_031433) Human Tagged ORF Clone

Product data:

Product Type:	Expression Plasmids
Product Name:	MFRP (NM_031433) Human Tagged ORF Clone
Tag:	Myc-DDK
Symbol:	MFRP
Synonyms:	CTRP5; MCOP5; NNO2; RD6
Mammalian Cell Selection:	Neomycin
Vector:	pCMV6-Entry (PS100001)
E. coli Selection:	Kanamycin (25 ug/mL)



[View online »](#)

ORF Nucleotide Sequence:

>RC219872 representing NM_031433
 Red=Cloning site Blue=ORF Green=Tags(s)

TTTTGTAATACGACTCACTATAGGGCGGCCGGAATTCGTCGACTGGATCCGGTACCGAGGAGATCTGCC
 GCC**CGGATCGCC**

ATGAAGGACTTCTCAGATGTCATCCTCTGCATGGAGGCAACAGAATCGAGCAAGACCGAGTTCTGCAATC
 CTGCCTTCGAGCCTGAGTCTGGGCCACCCTGCCCTCCCCAGTTTTCCAGAGGATGCCAGCTACAGCGT
 CCCAGCTCCCTGGCATGGTCGGGCTCCTCGAGGGCTACGGCCAGACTGCCGCTTCTCCTGGCTCTGTGTC
 CTCCTGCTCTCCAGCCTGCTCCTCTGCTGCTTGGGCTGCTGGTGGCCATCATCTGGCCAGCTGCAGG
 CTGACACCCCATCTGGGGCTCCATAGCCCACTGCCTGCCGAGGCTTACCACGACCACCACCC
 CACCATCACCACCTCTCAGGCAGCTGGGACCCCTAAAGGGCAGCAGGAGTCAGGCGTGAGCCCTCCCCA
 CAGTCCACCTGTGGAGGCTCCTCTCTGGCCAAAGGGCTTCTCAGCAGCCCTAACTACCAGACCCTT
 ACCCCCCAACACCCACTGCGTGTGGCATATCCAGGTGGCCACAGACCATGCAATACAGCTCAAGATCGA
 AGCCCTCAGCATAGAGAGTGTGGCTCTTGCCCTTTTGTATCGCTTGAAGTCTCCCTGAGCCTGAAGGC
 CCCTCCTCAGGGTTTGTGGAAGGGTGCCTCCCCACGCTCAACACCAATGCCAGCCACCTCCTGGTGG
 TCTTCGCTCTGACAGCAGTGTGGAAGGATTTGGTTTCCATGCCTGGTACCAGGCTATGGCCCTGGGCG
 CGGGAGCTGTGCCATGATGAGTTCCGCTGTGACCAGCTCATCTGCCTGTACTGACTCAGTGTGTGAT
 GGTTTTGCCAACTGTGCTGACGGCAGTGTGAGACCAATTGCAGTGCCAAAGTTCTCGGGGTGTGGGGGA
 ATCTGACTGGCCTCCAGGGCACTTTCTACTCCAGCTACCTGCAGCAGTACCCTACCAACTGCCTCTG
 CACCTGGCATATCTCGTGCCTGCCGGACAGCATAGAATACAGTCCACAATTCAGCCTGGAGGCT
 CAGGACGAGTCAAGTTGACTACGTGGAGGTGTATGAGACCAGCAGCTCAGGGGCTTCAGCCTCTGG
 GCAGTTCTGTGGAGCAGAGCCACCCCACTCGTCTCCTCGCACCATGAGCTGGCTGTGTTTGTAG
 GACAGATCATGGCATCAGCAGTGGAGGCTTCTCAGCCACCTACCTGGCCTTCAATGCCACGGAGAACCC
 TGTGGGCCAGTGTGCTCCTGCCAGGAGGAGGTGTAAAGGGTGTGCAGTGGATGTGTGACATGTGGA
 GAGACTGCACCGATGGCAGCGATGACAATGCAGCGGCCCTTGTTCACACCCAGAGCTGGCCTGTGA
 GCCTGTCCAGGTGGAGATGTGCCTCGGTCTGAGCTACAACACCACAGCCTTCCCTAACATCTGGGTGGC
 ATGATCACCCAGGAGGAGGTGGTAGAGTCTCAGCGTTACAAGAGCCTGACAAGCCTGCCCTGTACC
 AGCATTTCGGAGGCTCCTGTGTGGGCTGCTTGTGCCCGTTGCACCCACTAGGCAGTGTCTGCCCC
 TTGCCGCTCTGTCTGCCAGGAAGCGGAGCACCAGTCCAGTCTGGCCTGGCACTACTGGGACCCCTGG
 CCCTTCAACTGCAACAGGCTGCCAGAGGAGCTGACCTGGAAGCTGTGCCAGCCC

ACGCGTACGCGGCCGCTCGAGCAGAAACTCATCTCAGAAGAGGATCTGGCAGCAAATGATATCCTGGATT
 ACAAGGATGACGACGATAAGGTTTAA

Protein Sequence:

>RC219872 representing NM_031433
 Red=Cloning site Green=Tags(s)

MKDFSDVILCMEATESSKTEFCNPAFEPESGPPCPPVFPEDASYSVPAPWHGRRRPLRPDCRFSWLCV
 LLLSSLLLLLLGLLVAIILAQLQAAPPSGASHSPLPAGGLTTTTTPTITTSQAAGTPKGQQESGVSPSP
 QSTCGLLSGPRGFFSSPNYPDPYPNTHCVWHIQVATDHAIQLKIEALSIESVASCLFDRELSPEPEG
 PLLRVCGRVPPPTLNTNASHLLVVFVSDSSVEGFHFHAWYQAMAPGRGSCAHDEFRCQQLICLLPDSVCD
 GFANCADGSDETNCSAKFSGCGNLTGLQGTFTSTPSYLQQYPHQLLCTWHISVPAGHSIELQFHNFSLEA
 QDECKFDYVEVYETSSSGAFSLLGRFCGAEPHLLVSSHHELAVLFRTHGISSGGFSATYLAFNATENP
 CGPSELSCQAGGCKGVQWMDMWRDCTDGSDDNCSGPLFPPPELACEPVQVEMCLGLSYNTTAFPNIVWG
 MITQEEVVEVLSGYKSLTSLPCYQHFRLLCGLLVPRTPLGSLVPPCRSVCQEAHQCSGLALLGTPW
 PFNCNRLPEAADLEACAQP

TRTRPLEQKLISEEDLAANDILDYKDDDDKV

Chromatograms:

https://cdn.origene.com/chromatograms/mk8019_b04.zip

Restriction Sites:

Sgfl-Mlul

Cloning Scheme:


ACCN: NM_031433

ORF Size: 1737 bp

OTI Disclaimer: The molecular sequence of this clone aligns with the gene accession number as a point of reference only. However, individual transcript sequences of the same gene can differ through naturally occurring variations (e.g. polymorphisms), each with its own valid existence. This clone is substantially in agreement with the reference, but a complete review of all prevailing variants is recommended prior to use. [More info](#)

OTI Annotation: This clone was engineered to express the complete ORF with an expression tag. Expression varies depending on the nature of the gene.

Components: The ORF clone is ion-exchange column purified and shipped in a 2D barcoded Matrix tube containing 10ug of transfection-ready, dried plasmid DNA (reconstitute with 100 ul of water).

Reconstitution Method:

1. Centrifuge at 5,000xg for 5min.
2. Carefully open the tube and add 100ul of sterile water to dissolve the DNA.
3. Close the tube and incubate for 10 minutes at room temperature.
4. Briefly vortex the tube and then do a quick spin (less than 5000xg) to concentrate the liquid at the bottom.
5. Store the suspended plasmid at -20°C. The DNA is stable for at least one year from date of shipping when stored at -20°C.

RefSeq: [NM_031433.4](#)

RefSeq Size: 2519 bp

RefSeq ORF: 1740 bp

Locus ID: 83552

UniProt ID: [Q9BY79](#)

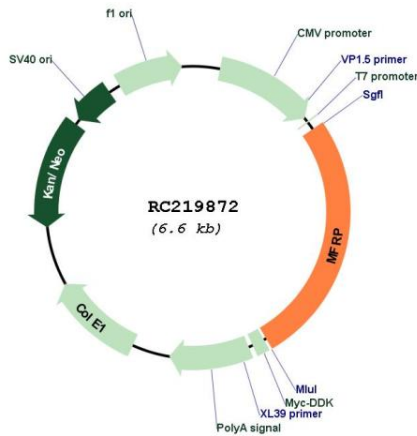
Cytogenetics: 11q23.3

Protein Families: Druggable Genome, Transmembrane

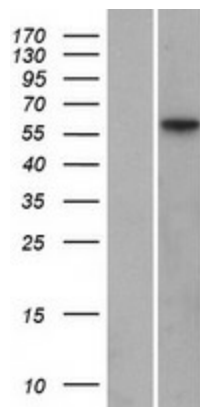
MW: 62 kDa

Gene Summary: This gene encodes a member of the frizzled-related protein family. The encoded protein plays an important role in eye development and mutations in this gene have been associated with nanophthalmos, posterior microphthalmia, retinitis pigmentosa, foveoschisis, and optic disc drusen. The protein is encoded by a bicistronic transcript which also encodes C1q and tumor necrosis factor related protein 5 (C1QTNF5). [provided by RefSeq, Jun 2013]

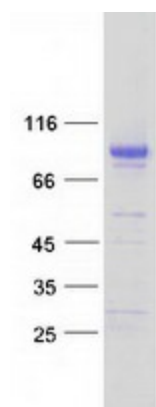
Product images:



Circular map for RC219872



Western blot validation of overexpression lysate (Cat# [LY410510]) using anti-DDK antibody (Cat# [TA50011-100]). Left: Cell lysates from untransfected HEK293T cells; Right: Cell lysates from HEK293T cells transfected with RC219872 using transfection reagent MegaTran 2.0 (Cat# [TT210002]).



Coomassie blue staining of purified MFRP protein (Cat# [TP319872]). The protein was produced from HEK293T cells transfected with MFRP cDNA clone (Cat# RC219872) using MegaTran 2.0 (Cat# [TT210002]).