

Product datasheet for RC219847

FGF14 (NM_175929) Human Tagged ORF Clone

Product data:

Product Type:	Expression Plasmids
Product Name:	FGF14 (NM_175929) Human Tagged ORF Clone
Tag:	Myc-DDK
Symbol:	FGF14
Synonyms:	FGF-14; FHF-4; FHF4; SCA27
Mammalian Cell Selection:	Neomycin
Vector:	pCMV6-Entry (PS100001)
E. coli Selection:	Kanamycin (25 ug/mL)
ORF Nucleotide Sequence:	>RC219847 ORF sequence Red=Cloning site Blue=ORF Green=Tags(s)

TTTTGTAATACGACTCACTATAGGGCGCCGGGAATTCGTCGACTGGATCCGGTACCGAGGAGATCTGCC
GCC**CGATCGCC**

ATGGTAAAACCGGTGCCCTCTTCAGGAGAACTGATTTCAAATTATTATTATGCAACCACAAGGATCTCT
TCTTTCTCAGGGTGTCTAAGCTGCTGGATTGCTTTTCGCCAAATCAATGTGGTTTCTTTGGAACATTTT
CAGCAAAGGAACGCATATGCTGCAGTGTCTTTGTGGCAAGAGTCTTAAGAAAAACAAGAACCAACTGAT
CCCCAGCTCAAGGGTATAGTGACCAGGTTATATTGCAGGCAAGGCTACTACTTGCAAATGCACCCCGATG
GAGCTCTCGATGGAACCAAGGATGACAGCACTAATTCTACTCTTCAACCTCATACCAGTGGGACTACG
TGTTGTTGCCATCCAGGGAGTAAAACAGGGTTGTATATAGCCATGAATGGAGAAGGTTACTCTACCCA
TCAGAACTTTTTACCCCTGAATGCAAGTTTAAAGAATCTGTTTTTGAAAATTATTATGTAATCTACTCAT
CCATGTTGTACAGACAACAGGAATCTGGTAGAGCCTGGTTTTTGGGATTAATAAGGAAGGGCAAGCTAT
GAAAGGGAACAGAGTAAAGAAAACCAACCAGCAGCTCATTTTCTACCAAGCCATTGGAAGTTGCCATG
TACCGAGAACCATCTTTGCATGATGTTGGGAAACGGTCCCGAAGCCTGGGGTGACGCCAAGTAAAAGCA
CAAGTGCCTGCAATAATGAATGGAGGCAAACCAAGTCAACAAGAGTAAGACAACA

ACGCGTACGCGGCCGCTCGAGCAGAACTCATCTCAGAAGAGGATCTGGCAGCAAATGATATCCTGGATT
ACAAGGATGACGACGATAAGGTTTAA



[View online »](#)

Protein Sequence: >RC219847 protein sequence
 Red=Cloning site Green=Tags(s)

MVKPVPLFRRTDFKLLCNHKDLFFLRVSKLLDCFSPKSMWFLWNIFSKGTHMLQCLCGKSLKKNKNPTD
 PQLKGIIVTRL YCRQGYLLQMHPD GALDGT KDDSTN STLFNLIPVGLRVVAIQGVKTGLYIAMNGEGYLYP
 SELFTPECKFKESVFENYYVIYSSMLYRQQESGRAWFLGLNKEGQAMKGNRVKKT KPAAHFLPKPLEVAM
 YREPSLHDVGETVPKPGVTPSKSTSASAIMNGGKPVNKS KTT

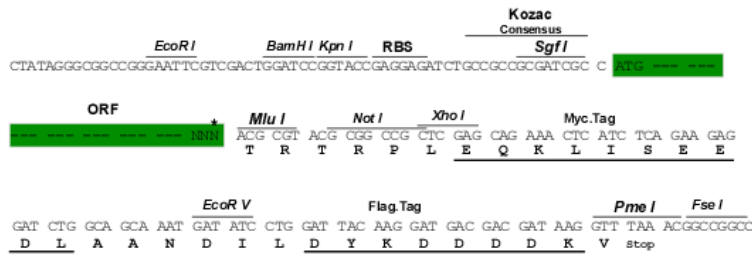
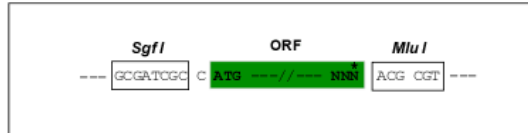
TRTRPLEQKLISEEDLAANDILDYKDDDDKV

Chromatograms: https://cdn.origene.com/chromatograms/mk6458_g11.zip

Restriction Sites: SgfI-MluI

Cloning Scheme:

Cloning sites used for ORF Shuttling:



* The last codon before the Stop codon of the ORF

ACCN: NM_175929

ORF Size: 756 bp

OTI Disclaimer: The molecular sequence of this clone aligns with the gene accession number as a point of reference only. However, individual transcript sequences of the same gene can differ through naturally occurring variations (e.g. polymorphisms), each with its own valid existence. This clone is substantially in agreement with the reference, but a complete review of all prevailing variants is recommended prior to use. [More info](#)

OTI Annotation: This clone was engineered to express the complete ORF with an expression tag. Expression varies depending on the nature of the gene.

Components: The ORF clone is ion-exchange column purified and shipped in a 2D barcoded Matrix tube containing 10ug of transfection-ready, dried plasmid DNA (reconstitute with 100 ul of water).

Reconstitution Method:

1. Centrifuge at 5,000xg for 5min.
2. Carefully open the tube and add 100ul of sterile water to dissolve the DNA.
3. Close the tube and incubate for 10 minutes at room temperature.
4. Briefly vortex the tube and then do a quick spin (less than 5000xg) to concentrate the liquid at the bottom.
5. Store the suspended plasmid at -20°C. The DNA is stable for at least one year from date of shipping when stored at -20°C.

RefSeq: [NM_175929.3](#)

RefSeq Size: 2831 bp

RefSeq ORF: 759 bp

Locus ID: 2259

UniProt ID: [Q92915](#)

Cytogenetics: 13q33.1

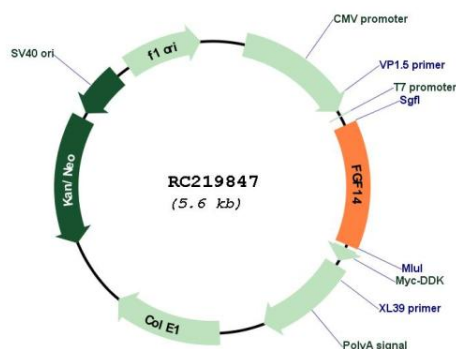
Protein Families: Secreted Protein

Protein Pathways: MAPK signaling pathway, Melanoma, Pathways in cancer, Regulation of actin cytoskeleton

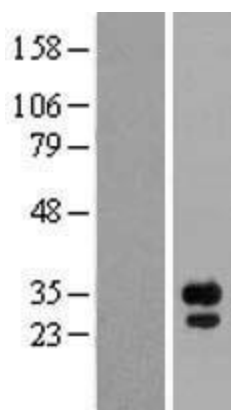
MW: 28.5 kDa

Gene Summary: The protein encoded by this gene is a member of the fibroblast growth factor (FGF) family. FGF family members possess broad mitogenic and cell survival activities, and are involved in a variety of biological processes, including embryonic development, cell growth, morphogenesis, tissue repair, tumor growth and invasion. A mutation in this gene is associated with autosomal dominant cerebral ataxia. Alternatively spliced transcript variants have been found for this gene. [provided by RefSeq, Jul 2008]

Product images:



Circular map for RC219847



Western blot validation of overexpression lysate (Cat# [LY406214]) using anti-DDK antibody (Cat# [TA50011-100]). Left: Cell lysates from untransfected HEK293T cells; Right: Cell lysates from HEK293T cells transfected with RC219847 using transfection reagent MegaTran 2.0 (Cat# [TT210002]).