

Product datasheet for **RC219844**

ZNF280D (NM_017661) Human Tagged ORF Clone

Product data:

Product Type:	Expression Plasmids
Product Name:	ZNF280D (NM_017661) Human Tagged ORF Clone
Tag:	Myc-DDK
Symbol:	ZNF280D
Synonyms:	SUHW4; ZNF634
Mammalian Cell Selection:	Neomycin
Vector:	pCMV6-Entry (PS100001)
E. coli Selection:	Kanamycin (25 ug/mL)



[View online »](#)

ORF Nucleotide Sequence:

>RC219844 representing NM_017661
 Red=Cloning site Blue=ORF Green=Tags(s)

TTTTGTAATACGACTCACTATAGGGCGGCCGGGAATTCGTCGACTGGATCCGGTACCGAGGAGATCTGCC
 GCC**CGCATCGCC**

ATGGGCGACAACCCTTTTCAACCAAAAAGTAATTCAAAAATGGCAGAAGTGTATGGAATGTGAAGAAG
 AGGAGCTGGAACCATGGCAGAAGAAAGTAAAAGAAGTTGAGGATGACGATGATGATGAGCCAATCTTTGT
 TGGCGAGATATCAAGTTCAAAACAGCAATTTCAAAATATTTTGAACAGAGTTAACCCAGCTCATATTCA
 AGGGGACTAAAGAATGGTGCACCTCAGTCGAGGTATTACTGCTGCATTCAAGCCTACAAGTCAACTACA
 CGAATCCAACATCAAAATCCAGTGCCTGCCTACCAATAAAATTTTCATCCTGAGTCTAGATCTTCAGATAG
 TTCTGTTATTGTTGAGCCTTTTTCTAAACCTGGTTATATAACAACTCATCACGAGTTGTGTCTAATAAG
 TCATCAGAGTTACTGTTGACTTGACCCAGGATACAGGATTATCACATTACCAAGGGGGACCAACTTT
 CTATGGCAGGTATGAGTAAAAGTTCATTTTTATCAAAACGTCCTTCTACTTCTGAAGTAAATAATGTTAA
 TCCAAAGAAGCCTAAACCCAGCGAAAGTGTTCGGAGCAAATTCCTCAGCTGTATTACCTTCAGTTAAA
 TCTCCTTCAGTGACTTCTCCAGGCTATGCTAGCAAAAAGGTACAAATACCTCATCAAAATCAGTCTAAAA
 ATGGAACACCTTTTCCAAGAGCTTGCCAAAGTGAACATTTCATTTCAATCTTTGGATCCTTTGAAAAA
 TCACATGAAGTATTGTTGTCAGACATGATAAATAACTTTTTGGGACTGGCTAAAACAGAAATTTCAAGT
 ACAGTAAATAAAAACACAACATTTGATTTCAGAGAAAGGAAAATTTGATCATGTTAGTTAATGACTTTTATT
 ATGGAAAACATGAAGGAGATGTCAGGAGGAACAGAAGACTCACACAACCTTTAAATGCTTCAGTTGCTT
 GAAAATTTCAAAAAAACATTAGGTTTATGAACCACATGAAACACCATTTGGAAGTTGAGAAGCAGAGC
 AGTGAGAGCTGGGAAAACCATACCACCTGCCAGCACTGCTACCCGTCAGTTTCCACACCATTTTCAGTTGC
 AGTGTACATCGAAAGTACACATACGCCCATGAATTTTCTACTATTTGTAAAATCTGTGAATTTGTCATT
 TGAACAGAACATGTTCTTTTACAACATATGAAGGACAATCATAAACCTGGTGAATGCCATATGCTGTC
 CAGGTTTGTAAATATAGATCATCATTTTTCTGATGTAGAAAATCATTTTAGAACATCCCATGAAAAACA
 CTAAGAAGTGTGATGCCGTTTTGCTCAAAGTTATTAATAATGCAACACCATATATGCATCATTATAT
 GAAGCATCAGAAAAAGGAATACATCGTTGTACAAAATGCAGGCTGCAGTTTTTGCATGCAAGGAGAAA
 ATGGATCATAAGACTCAACACCATCGAACATTTATAAACCTAAACAACAGAAAGATTGCTCCTGGAA
 CAAAAGTTACTATTCGAGCTTCAGTTGGACCTCTGCAATCAGGAGCTTACCTACACCTTCCATTAGTGC
 AAGTGCTTCTACCCTTCAGCTCTCACCTCAAGGACTAAAAATATAACTGCTAAAAATCTGCAAAATCT
 AATACAAGTAAACCTAATACAGTCAAATCCAACGCAAGTAAACCTAATACAAGTAAAGCCTAATGGAAGTA
 AATCTAAATACAACCAAAAATCTCTAATATGCAAAAAGAAAACAAAGCACATTGGCTAGTAGCAATAAAAA
 AAGTAAAGTCAATACAGCATTGAGGAATTAAGGTATCGTCGGGGCATTACAAAATGCATTGAGTGTGT
 TCCGAAATAAAAGATTTTGCAAACCACTTCTACGTACGTCCACTGTAGTTTTTGCAGATACAACACTA
 GCTGTAGCAAAGCCTATGTAATTCATATGATGAGCTTTCATAGTAACCGTCCAAGCAAAGGTTTTGTAT
 TTTTAAAGAAGCATTAGAAAAATCCTCCGGGGCATTACTCTAGTGTGCCTTAATTGTGATTTCTAAGTGT
 GTTTCTGGCTTAGATAATATGGCTACACACTTAAGTCAACATAAAAATCATACTTGCCAAGTTGTAATGC
 AGAAAGTTTCTGTTTGTATCCAACTTCTGAGCACCTTCTGAATTAAGAAAAGAAAGCTCCCGCAAAGGA
 ACAAGAACCTGTGTCTAAGGAAATGCAAGACCTAACATGGCTGAAAGAGAAAACAGAAACATCAAAATCT
 GAAAGTAAACAAGATAAAGCTGCTTCTTCAAAGAAAAAATGGATGTAATGCAAAATTCATTTGAAAGCT
 CATCAACAACAAAAAGTGAAGAAAGCATAACAGTTTCAGATAAGGAAAATGAAACCTGTCTTGACAGCA
 GGAAACTGGCTCAAAAAACATCGTCAGTTGTGATTCAAATATTGGTGCAGATAAAGTGGAAAAGAAAAA
 CAAATACAACACGTTTGTGAGGAAATGGAGTTGAAGATGTGCCAAAGTTCAGAAAACATAATCTTATCTG
 ATCAGATTAAGATCACAACCTCCAGTGAAGCCAGATTTTCTTCAAAGAATATTAAGGATTTGCGATTAGC
 ATCAGATAATGTAAGCATTGATCAGTTTTTGGAAAAAGACATGAACCTGAATCTGTTAGTTCTGATGTT
 AGCGAGCAAGGCAGTATTCATTTGGAACCTCTGACTCCATCCGAGGACTTGAGTATGAAGCCACAGAGA
 TTCTTCAGAAAGGTAGTGGTATCCTTCAGCCAAGACTGATGAAGTGTCTGATCAAAACAGATGACAT
 TCCTGGAGGAAATAACCTAGCACAAACAGAGGCAACAGTACACCTGGAAGATGAAAAAGAAAGAAGT

ACGCGTACGCGGCCGCTCGAGCAGAAACTCATCTCAGAAGAGGATCTGGCAGCAAATGATATCCTGGATT
 ACAAGGATGACGACGATAAGGTTTAA

Protein Sequence: >RC219844 representing NM_017661
 Red=Cloning site Green=Tags(s)

MGDNPFPKSNKMAELFMECEEELEPWQKKVKEVEDDDDEPIFVGEISSSKPAISNILNRVNPSSYS
 RGLKNGALSRGITAAFKPTSQHYTNPTSNPVPASPINFHPESRSSDSSVIVQPFKPGYITNSSRVVSNK
 SSELLFDLTQDTGLSHYQGGPTLSMAGMSESSFLSKRPSTSEVNNVNPKKPKPSESVSGANSSAVLPSVK
 SPSVTSSQAMLAAGTNTSSNQSKNGTFFPRACPKNIHFNLDPKLNHMKYCCPDMINFLGLAKTEFSS
 TVNKNTTIDSEKGLIMLVNDFYYGKHEGDVQEEQKTHHTTFKCF SCLKILKNNIRFMNHMKHLELEKQS
 SESWENHTTCQHCYRQFPPTPFLQCHIESTHTPHEFSTICKICELSFETEHVLLQHMKDNHKGEMPYVC
 QVCNYSRSSFSDVETHFRTSHENTKNLLCPFCLKVIKIATPYMHMHMKHKKGIHRCTKCRQLQFLTCCKE
 MDHKTQHHRFTIKPKQLEGLPPGKVTIRASVGPLQSGASPTPSISASATLQLSPRRTKNITAKNPAKS
 NTSKPNTVKSNAKPNTPSKPNGSKSKYKPKISNMQKKQSTLASSNKKSKVNTALRNLRYRRGIHKCIECC
 SEIKDFANHFPTYVHCSCFCRYNTSCSKAYVNHMSFHSNRPSKRF CIFKKHSENLRGITLVCLNCDFLSD
 VSGLDNMATHLSQHKHTTCQVVMQKVSVCIPTSEHLSELKKEAPAKEQEPVSKEIARPNMAERETETSNS
 ESKQDKAASSKEKNGCNANSFEFSSTTKSEESITVSDKENETCLADQETGSKNIVSCDSNIGADKVEKKK
 QIQHVQCMEELKMCQSSENIILSDQIKDHNSSEARFSSKNIKDLRLASDNVSIQFLRKRHEPESVSSDY
 SEQGSIHLEPLTPSEVLEYEATEILQKSGSDPSAKTDEVVSDQTDIDIPGGNNPSTTEATVDLEDEKERS

TRTRPLEQKLISEEDLAANDILDYKDDDDKV

Chromatograms: https://cdn.origene.com/chromatograms/mg2762_e09.zip

Restriction Sites: SgfI-MluI

Cloning Scheme:

Cloning sites used for ORF Shuttling:



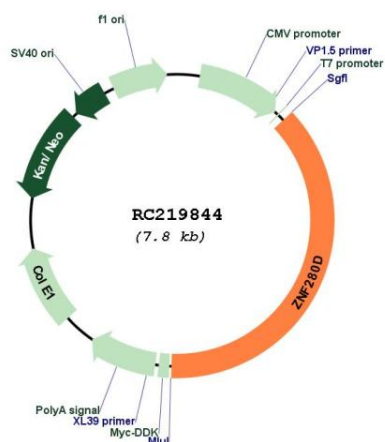
* The last codon before the Stop codon of the ORF

ACCN: NM_017661

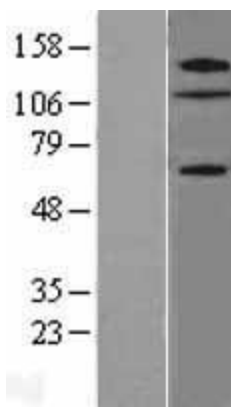
ORF Size: 2937 bp

OTI Disclaimer:	The molecular sequence of this clone aligns with the gene accession number as a point of reference only. However, individual transcript sequences of the same gene can differ through naturally occurring variations (e.g. polymorphisms), each with its own valid existence. This clone is substantially in agreement with the reference, but a complete review of all prevailing variants is recommended prior to use. More info
OTI Annotation:	This clone was engineered to express the complete ORF with an expression tag. Expression varies depending on the nature of the gene.
Components:	The ORF clone is ion-exchange column purified and shipped in a 2D barcoded Matrix tube containing 10ug of transfection-ready, dried plasmid DNA (reconstitute with 100 ul of water).
Reconstitution Method:	<ol style="list-style-type: none">1. Centrifuge at 5,000xg for 5min.2. Carefully open the tube and add 100ul of sterile water to dissolve the DNA.3. Close the tube and incubate for 10 minutes at room temperature.4. Briefly vortex the tube and then do a quick spin (less than 5000xg) to concentrate the liquid at the bottom.5. Store the suspended plasmid at -20°C. The DNA is stable for at least one year from date of shipping when stored at -20°C.
RefSeq:	NM_017661.2 , NP_060131.2
RefSeq Size:	4484 bp
RefSeq ORF:	2940 bp
Locus ID:	54816
UniProt ID:	Q6N043
Cytogenetics:	15q21.3
Domains:	zf-C2H2
MW:	109.1 kDa
Gene Summary:	May function as a transcription factor.[UniProtKB/Swiss-Prot Function]

Product images:



Circular map for RC219844



Western blot validation of overexpression lysate (Cat# [LY413659]) using anti-DDK antibody (Cat# [TA50011-100]). Left: Cell lysates from untransfected HEK293T cells; Right: Cell lysates from HEK293T cells transfected with RC219844 using transfection reagent MegaTran 2.0 (Cat# [TT210002]).