

Product datasheet for **RC219836**

LRRN3 (NM_001099658) Human Tagged ORF Clone

Product data:

Product Type:	Expression Plasmids
Product Name:	LRRN3 (NM_001099658) Human Tagged ORF Clone
Tag:	Myc-DDK
Symbol:	LRRN3
Synonyms:	FIGLER5; NLRR-3; NLRR3
Mammalian Cell Selection:	Neomycin
Vector:	pCMV6-Entry (PS100001)
E. coli Selection:	Kanamycin (25 ug/mL)



[View online »](#)

ORF Nucleotide Sequence:

>RC219836 ORF sequence
 Red=Cloning site Blue=ORF Green=Tags(s)

TTTTGTAATACGACTCACTATAGGGCGGCCGGAATTCGTCGACTGGATCCGGTACCGAGGAGATCTGCC
 GCC**CGCATCGCC**

ATGAAGGACATGCCACTCCGAATTCATGTGCTACTTGGCCTAGCTATCACTACACTAGTACAAGCTGTAG
 ATAAAAAGTGGATTGTCCACGGTTATGTACGTGTGAAATCAGGCCTTGGTTTACACCCAGATCCATTTA
 TATGGAAGCATCTACAGTGGATTGTAATGATTTAGGTCTTTTAACTTTCCAGCCAGATTGCCAGCTAAC
 ACACAGATTCTTCTCCTACAGACTAACAAATATTGCAAAAATTGAATACTCCACAGACTTTCCAGTAAACC
 TTAGTACCTGGATTTATCTCAAAACAATTTATCTTCAGTCACCAATATTAATGTAAAAAGATGCCTCA
 GCTCCTTCTGTGACTAGAGGAAAACAACTTACTGAACTGCCTGAAAAATGTCTGTCCGAACTGAGC
 AACTTACAAGAACTCTATTAATCACAACCTGCTTTCTACAATTCACCTGGAGCCTTTATTGGCCTAC
 ATAATCTTCTCGACTTCATCTCAATTCAAATAGATTGCAGATGATCAACAGTAAGTGGTTTGATGCTCT
 TCCAAATCTAGAGATTCTGATGATTGGGAAAAATCCAATTATCAGAATCAAAGACATGAACTTTAAGCCT
 CTATCAATCTTCGACGCTGGTTATAGCTGGTATAAACCTCACAGAAATACCAGATAACGCCTTGGTTG
 GACTGGAAAACTTAGAAAGCATCTCTTTTACGATAACAGGCTTATTAAGTACCCCATGTTGCTCTTCA
 AAAAGTTGAAATCTCAAATTTTGGATCTAAATAAAATCCTATTAATAGAATACGAAGGGGTGATTTT
 AGCAATATGCTACACTTAAAAGAGTTGGGGATAAATAATGCCTGAGCTGATTTCCATCGATAGCTTG
 CTGTGGATAACCTGCCAGATTTAAGAAAAATAGAAGCTACTAACAAACCCTAGATTGTCTTACATTCACCC
 CAATGCATTTTTCAGACTCCCAAGCTGGAATCACTCATGCTGAACAGCAATGCTCTCAGTGCCTGTAC
 CATGGTACCATTGAGTCTCTGCCAAACCTCAAGGAAATCAGCATAACAGTAACCCCATCAGGTGTGACT
 GTGTCATCCGTTGGATGAACATGAACAAAACCAACATTCGATTGATGGAGCCAGATTCACTGTTTTGCGT
 GGACCCACCTGAATTCGAAGGTGAGAATGTTCCGCAAGTGCATTTTCAGGGACATGATGGAATTTGTCTC
 CCTCTTATAGCTCCTGAGAGCTTTCCTTCTAATCTAAATGTAGAAGCTGGGAGCTATGTTTCCTTCACT
 GTAGAGCTACTGCAGAACCACAGCCTGAAATCTACTGGATAACACCTTCTGGTCAAAAACTTTGCCTAA
 TACCCTGACAGACAAGTTCTATGTCCATTCTGAGGGAACACTAGATATAAATGGCGTAACTCCCAAAGAA
 GGGGGTTTATATACTTGTATAGCAACTAACCTAGTTGGCGCTGACTTGAAGTCTGTTATGATCAAAGTGG
 ATGGATCTTTCCACAAGATAACAATGGCTCTTTGAATATTAATAAAGAGATATTCATGCCAATTCAGT
 TTTGGTGTCTGGAAAGCAAGTTCTAAAATCTCAAATCTAGTGTAAATGGACAGCCTTTGTCAAGACT
 GAAAATCTCATGCTGCGCAAAGTGTCTGAATACCATCTGATGTCAAGGTATATAATCTTACTCATCTGA
 ATCCATCAACTGAGTATAAAATTTGATTTGATATTTCCACCATCTATCAGAAAAACAGAAAAAATGTGT
 AAATGTACCACCAAAGTTTGCACCCTGATCAAAAAGAGTATGAAAAGAATAATACCACAACACTTATG
 GCCTGTCTGGAGGCCTTCTGGGGATTATTGGTGTGATATGTCTTATCAGCTGCCTCTCTCCAGAAATGA
 ACTGTGATGGTGGACACAGCTATGTGAGGAATTACTTACAGAAACCAACCTTTGCATTAGGTGAGCTTTA
 TCCTCCTGTATAAATCTCTGGGAAGCAGGAAAAGAAAAAGTACATCACTGAAAGTAAAAGCAACTGTT
 ATAGGTTTACCAACAAATATGTCC

ACGCGTACGCGGCCGCTCGAGCAGAACTCATCTCAGAAGAGGATCTGGCAGCAAATGATATCCTGGATT
 ACAAGGATGACGACGATAAGGTTTAA

Protein Sequence: >RC219836 protein sequence
Red=Cloning site Green=Tags(s)

MKDMPRIHVLLGLAITTLVQAVDKKVDPCRLCTCEIRPWFTPRSIYMEASTVDCNDLGLLTFPARLPAN
 TQILLQLTNNIAKIEYSTDFPVNLTSLDLSQNNLSSVTNINVKKMPQLLSVYLEENKLTPEKCLSELS
 NLQELYINHNLSTISPGAFIGLHNLRLHLNSNRLQMINSKWFDALPNLEILMIGENPIIRIKDMNFKP
 LINLRSLVIAGINLTEIPDNALVGLLENLESISFYDNRLIKVPHVALQKVVNLFKLDLKNKPINRIRRGDF
 SNMLHLKELGINNMPELISIDSLAVDNLPDLRKIEATNNPRLSYIHPNAFFRLPKLESLMLNSNALSALY
 HGTIESLPNLKEISIHSPNIRCDVCVIRWMNMNKTNIRFMEPDSLFCVDPPEFQGGQVNRVQVHFRDMMEICL
 PLIAPESFPSNLNVEAGSYVSFHCRAEAPQPEIYWITPSGQKLLPNTLTDKFYVHSEGLDINGVTPKE
 GGLYTCIATNLVGADLKSVMIKVDGSPQDNNGSLNIKIRDIHANSVLVSWKASSILKSSVKWTAFAVKT
 ENSHAAQSARIPSDVKVYNLTHLNPSTEYKICIDIPTIYQKNRKKCVNVTTKGLHPDQKEYEKNNTTTL
 ACLGGLGIIGVICLISCLSPENMCDGGHSYVRNYLQKPTFALGELYPPLINLWEAGKEKSTSLKVKATV
 IGLPTNMS

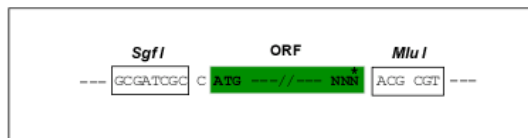
TRTRPLEQKLISEEDLAANDILDYKDDDDKV

Chromatograms: https://cdn.origene.com/chromatograms/mk6694_g09.zip

Restriction Sites: SgfI-MluI

Cloning Scheme:

Cloning sites used for ORF Shuttling:



* The last codon before the Stop codon of the ORF

ACCN: NM_001099658

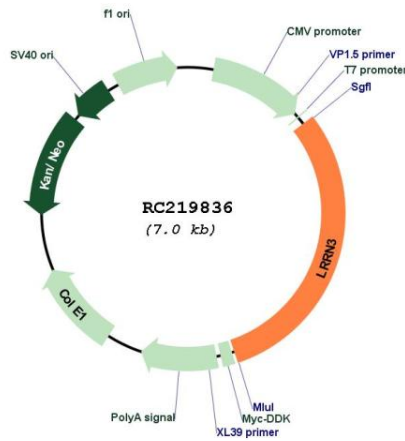
ORF Size: 2124 bp

OTI Disclaimer: The molecular sequence of this clone aligns with the gene accession number as a point of reference only. However, individual transcript sequences of the same gene can differ through naturally occurring variations (e.g. polymorphisms), each with its own valid existence. This clone is substantially in agreement with the reference, but a complete review of all prevailing variants is recommended prior to use. [More info](#)

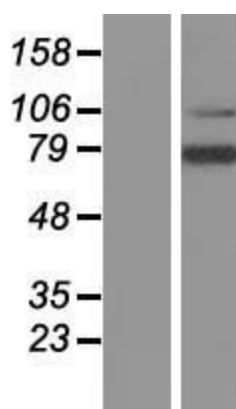
OTI Annotation: This clone was engineered to express the complete ORF with an expression tag. Expression varies depending on the nature of the gene.

Components:	The ORF clone is ion-exchange column purified and shipped in a 2D barcoded Matrix tube containing 10ug of transfection-ready, dried plasmid DNA (reconstitute with 100 ul of water).
Reconstitution Method:	<ol style="list-style-type: none"> 1. Centrifuge at 5,000xg for 5min. 2. Carefully open the tube and add 100ul of sterile water to dissolve the DNA. 3. Close the tube and incubate for 10 minutes at room temperature. 4. Briefly vortex the tube and then do a quick spin (less than 5000xg) to concentrate the liquid at the bottom. 5. Store the suspended plasmid at -20°C. The DNA is stable for at least one year from date of shipping when stored at -20°C.
RefSeq:	<u>NM_001099658.1, NP_001093128.1</u>
RefSeq Size:	3637 bp
RefSeq ORF:	2127 bp
Locus ID:	54674
UniProt ID:	<u>Q9H3W5</u>
Cytogenetics:	7q31.1
Protein Families:	Transmembrane
MW:	79.5 kDa

Product images:



Circular map for RC219836



Western blot validation of overexpression lysate (Cat# [LY420476]) using anti-DDK antibody (Cat# [TA50011-100]). Left: Cell lysates from untransfected HEK293T cells; Right: Cell lysates from HEK293T cells transfected with RC219836 using transfection reagent MegaTran 2.0 (Cat# [TT210002]).