

Product datasheet for **RC219832**

Kinectin 1 (KTNI) (NM_001079521) Human Tagged ORF Clone

Product data:

| | |
|----------------------------------|------------------------|
| Product Type: | Expression Plasmids |
| Tag: | Myc-DDK |
| Symbol: | Kinectin 1 |
| Synonyms: | CGI; KNT; MU-RMS-40.19 |
| Mammalian Cell Selection: | Neomycin |
| Vector: | pCMV6-Entry (PS10001) |
| E. coli Selection: | Kanamycin (25 ug/mL) |

ORF Nucleotide Sequence: >RC219832 representing NM_001079521
Red=Cloning site Blue=ORF Green=Tags(s)

TTTTGTAATACGACTACTATAGGGCGCCGGGAATTCGTCGACTGGATCCGGTACCGAGGAGATCTGCC
GCCGCGATCGCC

ATGGAGTTTTATGAGTCAGCATATTTTATTGTTCTTATTCTTCAATAGTTATTACAGTAATTTTCTCT
TCTTCTGGCTTTTCATGAAAGAAACATTATATGATGAAGTTCTTGCAAAACAGAAAAGAGAACAAGGCT
TATTCCTACCAAAACAGATAAAAAGAAAGCAGAAAAGAAAAGAATAAAAAGAAAGAAATCCAGAATGGA
AACCTCCATGAATCCGACTCTGAGAGTGTACCTCGAGACTTTAAATATCAGATGCTTTGGCAGTAGAAG
ATGATCAAGTTGCACCTGTCCATTGAATGTCGTTGAAACTTCAAGTAGTGTAGGGAAAGAAAAAGAA
GGAAAAGAAACAAAAGCCTGTGCTTGAAGAGCAGGTCATCAAAGAAAGTACGATCAAAGATTCCTGGC
AAAAAGTAGAACCTGTCCAGTTACTAAACAGCCACCCCTCCCTCTGAAGCAGCTGCCTCGAAGAAGA
AACCAGGCCAGAAGAAGTCTAAAAATGGAAGCGATGACCAGGATAAAAAGGTGGAACTCTCATGGTACC
ATCAAAAAGGCAAGAAGCATTGCCCTCCACCAAGAGACTAAACAAGAAAGTGGATCAGGGAAGAAGAAA
GCTTCATCAAAGAAACAAAAGACAGAAAATGTCTTCGTAGATGAACCCCTTATTCATGCAACTACTTATA
TTCTTTGATGGATAATGCTGACTCAAGTCTGTGGTATAGATAAGAGAGAGGTTATTGATTTGCTTAAACC
TGACCAAGTAGAAGGGATCCAGAAAATCTGGGACTAAAAAAGTGAAGACCGAACTGACAAAAGAAATGCT
GAAGTGAAGTTTAAAGATTTTCTTCTGTCCTTGAAGACTATGATGTTTTCTGAAGATGAGGCTCTTTGTG
TTGTAGACTTGCTAAAGGAGAAGTCTGGTGAATACAAGATGCTTTAAAGAAGTCAAGTAAGGGAGAATT
GACTACGCTTATACATCAGCTTCAAGAAAAGGACAAGTTACTCGCTGCTGTGAAGGAAGATGCTGCTGCT
ACAAAAGGATCGGTGTAAGCAGTTAACCCAGGAAATGATGACAGAGAAGAAAGCAATGTGGTTATAA
CAAGGATGAAAGATCGAATTGGAACATTAGAAAAGGAACATAATGTATTCAAAAACAAAATACATGTCAG
TTATCAAGAGACTCAACAGATGCAGATGAAGTTTCAGCAAGTTCGTGAGCAGATGGAGGCAGAGATAGCT
CACTTGAAGCAGGAAAAATGGTATACTGAGAGATGCAGTCAGCAACTACAAAATCAACTGGAAGCAAGC
AGTCTGCAGAACTAAATAAAGTACGCCAGGATTATGCTAGGTTGGTGAATGAGCTGACTGAGAAAAACAGG
AAAGCTACAGCAAGAGGAAGTCCAAAAGAAAGTCTGAGCAAGCAGCTACTCAGTTGAAGGTTCAACTA
CAAGAAGCTGAGAGAAGGTGGGAAGAAGTTCAGAGCTACATCAGGAAGAGAACAGCGGAACATGAGGCAG



CACAGCAAGATTTACAGAGTAAATTTGTGGCCAAAGAAAATGAAGTACAGAGTCTGCATAGTAAGCTTAC
AGATACCTTGGTATCAAAAACACAGTTGGAGCAAAGACTAATGCAGTTAATGGAATCAGAGCAGAAAAGG
GTGAACAAAAGAAGAGTCTCTACAAATGCAGGTTCCAGGATATTTGGAGCAGAATGAGGCTTTGAAAGCTC
AAATTCAGCAGTTCATTCCCAGATAGCAGCCAGACCTCCGCTTCAGTTCTAGCAGAAGAATTACATAA
AGTGATTGCAGAAAAGGATAAGCAGATAAAAACAGACTGAAGATTCTTTAGCAAGTGAACGTGATCGTTTA
ACAAGTAAAGAAGAGGAACCTAAGGATATACAGAATATGAATTTCTTATTAAGAGCTGAAGTGCAGAAAT
TACAGGCCCTGGCAAATGAGCAGGCTGCTGCTGCACATGAATTGGAGAAGATGCAACAAAGTGTATATGT
TAAAGATGATAAAAATAAGATTGCTGGAAAGGACACTACAACATGAAATTTCAAACAAAATGGAAAGATTT
AAGATTCTAAATGACCAAAAACAAAGCATTAAAAACAGAAGTTCAGAAGCTACAGACTCTTGTCTTCTGAAC
AGCCTAATAAGGATGTTGTGGAAACAAATGGAAAAATGCATTCAAGAAAAAGATGAGAAGTTAAAGACTGT
GGAAGAATTACTTGAAGTGGACTTATTCAGGTGGCAACTAAAGAAGAGGAGCTGAATGCAATAAAGAAC
GAAAAATTCATCTCTGACAAAAGAAAGTTCAAGACTTAAAAGCTAAGCAAAAATGATCAGGTTTTCTTTGCTC
CTCTAGTTGAAGAAGTAAAGAAAGTATCCATGAGAAAAGTGGAAAAGTCAAGTCTGTAGAAGAGCTTCT
GGAGGCAGAACTTCTCAAAGTTGCTAACAAAGGAGAAAAGTGTTCAGGATTTGAAACAGGAAATAAAGCT
CTAAAAGAAGAAATAGGAAATGTCCAGCTTGAAGAGGCTCAACAGTTATCTATCACTTCAAAGTTCAGG
AGCTTCAGAACTTATTAAGGAAAAGAGGAAACAGATGAATACCATGAAGGCTTTTTGGAAGAGAAAGA
GAAAGACCTAGCCAATACAGGGAAGTGGTTACAGGATCTTCAAGAAGAAAATGAATCTTTAAAAGACAT
GTTTCAGGAAGTAGCACAACTAAGTGAAGAGGCTCTTCTGCATCACAGTTTGAAGAAGTGGAGATTG
TGTTGAAAGAAAAGGAAAATGAATGAAGAGGTTAGAAGCCATGCTAAAAGAGAGGGAGAGTGATCTTTT
TAGCAAAACACAGCTGTTACAGGATGTACAAGATGAAAACAAATTTTAAAGTCCAAATGAGCAGCTT
AAACAACAAAAGTACCAACAGGCATCTTCTTTCCCTCATGAAGAATTATTAAGTAAATTTTCAGAAA
GAGAGAAAAGAAATAGTGGTCTCTGGAATGAGTTAGATTCTTTGAAGGATGCAGTTGAACACCAGAGGAA
GAAAAACAATGACCTTCGGGAGAAAAGTGGGAAGCAATGGAAGCATTGGCATCAACTGAAAAAATGCTG
CAGGACAAAGTGAACAAGACTTCCAAGGAAAGGCAGCAACAGGTGGAAGCTGTTGAGTTGGAGGCTAAAG
AAGTCTCAAAAAATTTTCCAAGGTGTCTGTCCCTTCTAATTTGAGTTATGGTGAATGGTTGCATGG
ATTTGAAAAAAGGCAAAAGATGTATGGCTGGAACCTCAGGGTCAGAGGAGGTTAAGGTTCTAGAGCAC
AAGTTGAAAGAAGCTGATGAAATGCACACATTGTACAGCTAGAGTGTGAAAAATACAAATCCGTCCTTG
CAGAAACAGAAGGAATTTTACAGAAGCTACAGAGAAGTGTGAGCAAGAAGAAAAATAATGGAAAGTTAA
GGTCGATGAATCACACAAGACTATTAACAGATGCAGTCATCATTTACATCTTCAGAACAAGAGCTAGAG
CGATTAAGAAGCGAAAAATAGGATATTGAAAATCTGAGAAGAGAACGAGAACATTTGAAAATGGAAGTGA
AAAAGGCAGAGATGGAACGATCTACCTATGTTACAGAAGTCAAGAGCTGAAAGATCTGTTGACTGAATT
GCAGAAAAAAGTGTGATTTATCTGAAAGCAGTAAGACAGAATGAAGAGCTAAATTTGTTGAAAGGCA
CAGTTAAATGAAACACTCACAAGTCTGAAAGTGAACAAAATGAAAGACAGAAGGTAGCTGGTGTATTGC
ATAAGGCTCAACAGTCACTGGAGCTTATCCAGTCAAAAATAGTAAAAGCTGCTGGAGACACTACTGTTAT
TGAAAAATAGTGTGTTTCCCAGAAACGGAGTCTTCTGAGAAGGAGACAATGTCTGTAAGTCTAAATCAG
ACTGTAACACAGTTACAGCAGTTGCTTCAGGCGGTAACCAACAGCTCACAAAGGAGAAAGAGCACTACC
AGGTGTTAGAG

ACGCGTACGCGGCCGCTCGAGCAGAACTCATCTCAGAAGAGGATCTGGCAGCAATGATATCCTGGATT
ACAAGGATGACGCGATAAGGTTTAA

Protein Sequence:

>RC219832 representing NM_001079521

Red=Cloning site Green=Tags(s)

MEFYESAYFIVLIPSIIVITVIFLFFWLFMKETLYDEVLAQKQREQLIPTKTDKKAEEKKKNKKKEIQNG
 NLHESDSESVPRDFKLSDALAVEDDQVAPVPLNVVETSSSVRERKKKEKQKPVLEEQVIKESDASKIPG
 KKVEVPVTKQPTPPSEAAASKKKPGQKSKNGSDDQDKKVELMVPSPKRQEALPLHQETKQESGSGKKK
 ASSKKQKTENVFVDEPLIHATTYIPLMDNADSSPVVDKREVIDLLKPDQVEGIQKSGTKKLTETDKENA
 EVKFKDFLLSLKTMFSEDEALCVVDLLKEKSGVIQDALKKSSKGELTTLIHQLQEKDKLLAAVKEDAAA
 TKDRCKQLTQEMMTEKERSNVVITRMKDRIQTLEKHNVFQNKIHVSQYQETQQMQMKFQQVREQMEAEIA
 HLKQENGILRDAVSNTTNQLESKQSAELNKLQDYARLVNELTEKTKGLQEEVQKKNAEQAATQLKVQL
 QEAERRWEEVQSYIRKRTAEHEAAQDLQSKFVAKENEVQSLHSLKTDTLVSKQQLQRLMQLMESEQKR
 VNKESLQMQVQDILEQNEALKAQIQFHSQIAAQTSAVLAEELHKVIAEKDKQIKQTEDSLASERDRL
 TSKEEELKDIQNMNFLKAQVQKLQALANEQAAAAHELEKMQQSVYVKKDKIRLLEEQLQHEISNKMEEF
 KILNDQNKALKSEVQKLQTLVSEQPNKDVVEQMEKCIQEKDEKLTVEELLEGLIQVATKEEELNAIRT
 ENSSLTKEVQDLKAKQNDQVSFASLVEELKKVIHEKDGKIKSVEELLEAELLKVANKEKTVQDLKQEIKA
 LKEEIGNVQLEKAQQLSITSKVQELQNLKKGKEEQMNTMKAVLEEKEDLANTGKWLQDLQEEENESLKAH
 VQEVQHNHKEASSASQFEELIIVLKEKENELKRLEAMLKEREKESDLSSKTQLLQDVQDENKLFKSQIEQL
 KQNYQASSFPPEHEELKVISEREKEISGLWNELDSLKDAVEHQKKNNDLREKNWEAMEALASTEKML
 QDKVNTSKERQQVEAVELEAKEVLKLPKVSVPNSLSYGEWLHGFEKKAKECMAGTSGSEEVKVLH
 KLKEADEMHTLLQLECEKYKSVLAETEGILQKLQRSVEQENKWKVKVDESHKTIKQMQSSFTSSEQELE
 RLRSENKDIENLREREHLEMELEKAEMERSTYVTEVRELKDLLTELQKKLDDSYSEAVRQNEELNLLKA
 QLNETLTKLRTEQNERQKVAGDLHKAQQSLELIQSKI VKAAGDTTVIENSVDSPETESSEKETMSVSLNQ
 TVTQLQQLLQAVNQQLTKEKEHYQVLE

TRTRPLEQKLI SEEDLAANDILDYKDDDDKV

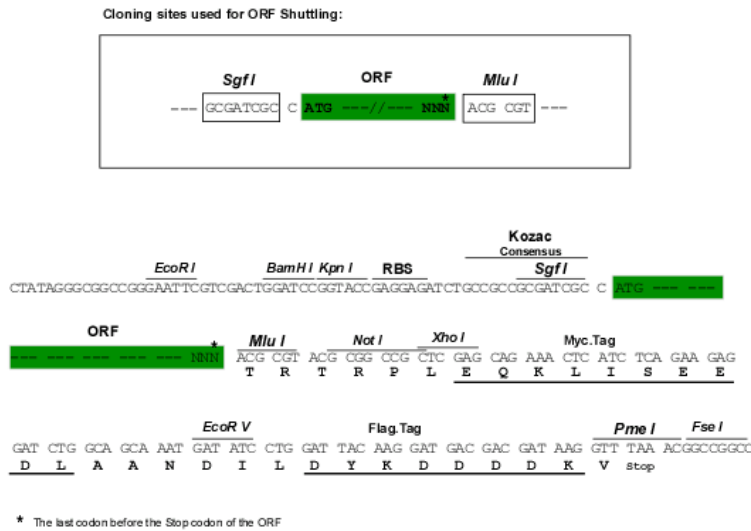
Chromatograms:

https://cdn.origene.com/chromatograms/mk8005_d07.zip

Restriction Sites:

SgfI-MluI

Cloning Scheme:



ACCN:

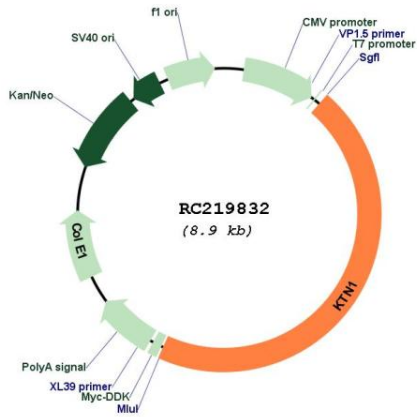
NM_001079521

ORF Size:

4071 bp

| | |
|-------------------------------|---|
| OTI Disclaimer: | The molecular sequence of this clone aligns with the gene accession number as a point of reference only. However, individual transcript sequences of the same gene can differ through naturally occurring variations (e.g. polymorphisms), each with its own valid existence. This clone is substantially in agreement with the reference, but a complete review of all prevailing variants is recommended prior to use. More info |
| OTI Annotation: | This clone was engineered to express the complete ORF with an expression tag. Expression varies depending on the nature of the gene. |
| Components: | The ORF clone is ion-exchange column purified and shipped in a 2D barcoded Matrix tube containing 10ug of transfection-ready, dried plasmid DNA (reconstitute with 100 ul of water). |
| Reconstitution Method: | <ol style="list-style-type: none">1. Centrifuge at 5,000xg for 5min.2. Carefully open the tube and add 100ul of sterile water to dissolve the DNA.3. Close the tube and incubate for 10 minutes at room temperature.4. Briefly vortex the tube and then do a quick spin (less than 5000xg) to concentrate the liquid at the bottom.5. Store the suspended plasmid at -20°C. The DNA is stable for at least one year from date of shipping when stored at -20°C. |
| Note: | Plasmids are not sterile. For experiments where strict sterility is required, filtration with 0.22um filter is required. |
| RefSeq: | NM_001079521.2 |
| RefSeq Size: | 4750 bp |
| RefSeq ORF: | 4074 bp |
| Locus ID: | 3895 |
| UniProt ID: | Q86UP2 |
| Cytogenetics: | 14q22.3 |
| Protein Families: | Druggable Genome, Transmembrane |
| MW: | 156.1 kDa |
| Gene Summary: | This gene encodes an integral membrane protein that is a member of the kinectin protein family. The encoded protein is primarily localized to the endoplasmic reticulum membrane. This protein binds kinesin and may be involved in intracellular organelle motility. This protein also binds translation elongation factor-delta and may be involved in the assembly of the elongation factor-1 complex. Alternate splicing results in multiple transcript variants of this gene. [provided by RefSeq, Aug 2012] |

Product images:



Circular map for RC219832

Western validation with an anti-DDK antibody
 * L: Control HEK293 lysate R: Over-expression lysate