

Product datasheet for **RC219831**

SBSN (NM_198538) Human Tagged ORF Clone

Product data:

Product Type:	Expression Plasmids
Product Name:	SBSN (NM_198538) Human Tagged ORF Clone
Tag:	Myc-DDK
Symbol:	SBSN
Synonyms:	UNQ698
Mammalian Cell Selection:	Neomycin
Vector:	pCMV6-Entry (PS100001)
E. coli Selection:	Kanamycin (25 ug/mL)
ORF Nucleotide Sequence:	>RC219831 representing NM_198538 Red=Cloning site Blue=ORF Green=Tags(s)

TTTTGTAATACGACTCACTATAGGGCGCCGGGAATTCGTCGACTGGATCCGGTACCGAGGAGATCTGCC
GCC**CGATCGCC**

ATGCATCTGCACGTCTGGTCGGCTCCTGCTCCCTCCTTCTGCTACTGGGGGCCCTGTCTGGATGGGCGG
CCAGCGATGACCCATTGAGAAGGTCATTGAAGGGATCAACCGAGGGCTGAGCAATGCAGAGAGAGAGGT
GGGCAAGGCCCTGGATGGCATCAACAGTGAATCACGCATGCCGGAAGGGAAGTGGAGAAGGTTTTCAAC
GGACTTAGCAACATGGGAGCCACACCGCAAGGAGTTGGACAAAGGCGTCCAGGGGCTCAACCACGGCA
TGGACAAGGTTGCCCATGAGATCAACCATGGTATTGGACAAGCAGAAAGGAAGCAGAGAAGCTTGCCCA
TGGGGTCAACAACGCTGCTGGACAGGCCGGGAAGGAAGCAGACAAAGCGTCCAAGGGTTCCACACTGGG
GTCCACCAAGGCTGGGAAGGAAGCAGAGAAAATTGGCCAAGGGGTCAACCATGCTGCTGACCAGGCTGGAA
AGGAAGTGGAGAAGCTTGGCCAAGGTGCCACCATGCTGCTGGCCAGGCCGGGAAGGAGCTGCAGAAATGC
TCATAATGGGGTCAACCAAGCCAGCAAGGAGGCCAACCAGCTGCTGAATGGCAACCATCAAAGCGGATCT
TCCAGCCATCAAGGAGGGGCCACAACCACGCCGTTAGCCTCTGGGGCCTCGGTCAACACGCCCTTTCATCA
ACCTTCCCGCCCTGTGGAGGAGCGTCGCCAACATCATGCC

ACGCGTACGCGGCCGCTCGAGCAGAACTCATCTCAGAAGAGGATCTGGCAGCAAATGATATCCTGGATT
ACAAGGATGACGACGATAAGGTTTAA



[View online »](#)

Protein Sequence: >RC219831 representing NM_198538
Red=Cloning site Green=Tags(s)

MHLARLVGSCSLLLLLGALSGWAASDDPIEKVIEGINRGLSNAEREVGKALDGINSGITHAGREVEKVFN
 GLSNMGSHTGKELDKGVQGLNHGMDKVAHEINHIGIQAGKEAEKLGHGNNAAAGQAGKEADKAVQGFHTG
 VHQAGKEAEKLGQGVNHAADQAGKEVEKLGQGAHHAAGQAGKELQNAHNGVQNQASKEANQLLNNGNHQSGS
 SSHQGGATTTPLASGASVNTPFINLPALWRSVANIMP

TRTRPLEQKLISEEDLAANDILDYKDDDDKV

Chromatograms: https://cdn.origene.com/chromatograms/mg2970_c05.zip

Restriction Sites: SgfI-MluI

Cloning Scheme:



ACCN: NM_198538

ORF Size: 741 bp

OTI Disclaimer: The molecular sequence of this clone aligns with the gene accession number as a point of reference only. However, individual transcript sequences of the same gene can differ through naturally occurring variations (e.g. polymorphisms), each with its own valid existence. This clone is substantially in agreement with the reference, but a complete review of all prevailing variants is recommended prior to use. [More info](#)

OTI Annotation: This clone was engineered to express the complete ORF with an expression tag. Expression varies depending on the nature of the gene.

Components: The ORF clone is ion-exchange column purified and shipped in a 2D barcoded Matrix tube containing 10ug of transfection-ready, dried plasmid DNA (reconstitute with 100 ul of water).

Reconstitution Method:

1. Centrifuge at 5,000xg for 5min.
2. Carefully open the tube and add 100ul of sterile water to dissolve the DNA.
3. Close the tube and incubate for 10 minutes at room temperature.
4. Briefly vortex the tube and then do a quick spin (less than 5000xg) to concentrate the liquid at the bottom.
5. Store the suspended plasmid at -20°C. The DNA is stable for at least one year from date of shipping when stored at -20°C.

Note: Plasmids are not sterile. For experiments where strict sterility is required, filtration with 0.22um filter is required.

RefSeq: [NM_198538.4](#)

RefSeq Size: 957 bp

RefSeq ORF: 744 bp

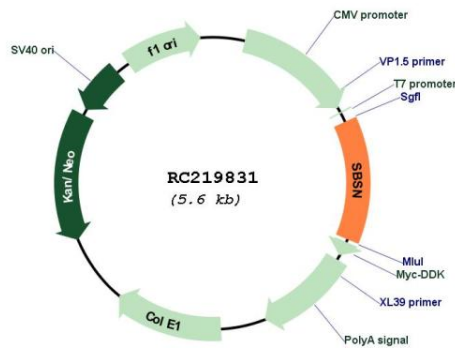
Locus ID: 374897

UniProt ID: [Q6UWP8](#)

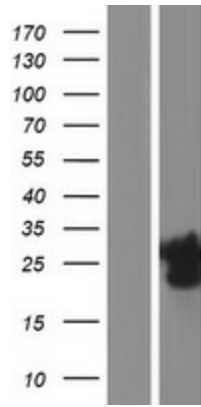
Cytogenetics: 19q13.12

MW: 25.2 kDa

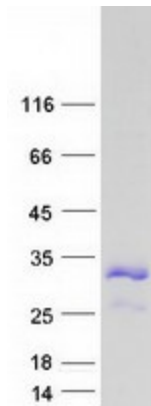
Product images:



Circular map for RC219831



Western blot validation of overexpression lysate (Cat# [LY404842]) using anti-DDK antibody (Cat# [TA50011-100]). Left: Cell lysates from untransfected HEK293T cells; Right: Cell lysates from HEK293T cells transfected with RC219831 using transfection reagent MegaTran 2.0 (Cat# [TT210002]).



Coomassie blue staining of purified SBSN protein (Cat# [TP319831]). The protein was produced from HEK293T cells transfected with SBSN cDNA clone (Cat# RC219831) using MegaTran 2.0 (Cat# [TT210002]).