

Product datasheet for RC219829

C20orf194 (NM_001009984) Human Tagged ORF Clone

Product data:

Product Type:	Expression Plasmids
Tag:	Myc-DDK
Symbol:	C20orf194
Mammalian Cell Selection:	Neomycin
Vector:	pCMV6-Entry (PS10001)
E. coli Selection:	Kanamycin (25 ug/mL)

ORF Nucleotide Sequence: >RC219829 representing NM_001009984
Red=Cloning site Blue=ORF Green=Tags(s)

TTTTGTAATACGACTCACTATAGGGCGGCCGGGAATTCGTCGACTGGATCCGGTACCGAGGAGATCTGCC
GCCGCGATCGCC

ATGGACGTGTACCCCCGCGCCGGCAGGGGCTGCCCGCGCTCGGTCCCCTGGCGGCTCCAGCCGCGGGT
CACCCCTCGTCAGCTGCAGTCGACTTCGGCAGGTTTCAGAGCATCCTGACCCAGAGCAGCAAGTCTCGGCC
GGATGGGATCCTCTGCATCCTAGGAATCGATAGCAGGTACAATGAAGGCTGCAGAGAGCTGGCAAATTAT
CTTCTATTTGGTTTGTACAATCAGAATACCAAGTATTTTGAGAAAAACGGGATTTTCTGAAGAAGTACTAG
ATGATGTAATTATATTGATTAATCGGATAGCCTCATCTGTACTGTAATCCTGTAAACTTTCGCTATCT
CTTACCTTATGTGGCACCATTGGAGAAATCTGCATTTCCACTGCATGACCGAAAAATGAGTATGAAGATGAA
GAAGCCGCAGAAGAATTTAAAATTACCAGCTTTTGGACATGGTTTCGAGACTGTAGTAGAATTGGCATTTC
CTTACAGCTCCCAAGGTCACCTTGCAGATATTTGATATGTTTGGTGGAGAAATGGCCAATTGTACAGGC
CTTTGCACTTGAGGGCATTGGAGGGGATGGATTTTTTACCATGAAATATGAGTTGCAGGATGTGAGTTTG
AATCTATGGAATGTCTACAGCAAGATGGATCCTATGTCTCTGGAGAGTTTGCTTTCAGATGATTTGGTGG
CTTTTGAACATCAGTGGACTAGCTTCTTCGCTAATTTTGACACAGAAATTCCTTTTCCTGCTAGAATTTT
AGAATCTCAGGCGGGTGAGCCATTCAGAAGTATTTTCAGTCATGGAATGATCTCTAGCCATATAACTGAA
AACAGCCCTAACCGGCAGCCATTTGTTCTCTTTGGTAACTACTCCACACGAGAAAACTGAATGCTGGCA
ACTTTAACTTCCCTTCTGAAGGACATCTGGTACGAAGCACTGGTCCCAGGAGGAGCTTTGCCAAGCACAT
GGTAGCCAGTGTGTCTACCAAAGGGACCTTTGCTTGTTCGAGAACATACTTTTTTGGAGCTACTCAT
GTTCTTACTTGGGTGGTACAGCAAGCTGCCCAAGAAAACTGAACAAATTAGGCTATTGTCCCAGATAT
ATGCTGCTGTTATTGAGGCTGTTTTGGCTGGCATTGCATGTTATGCTAAAACCTCCAGTCTAACAAAGGC
CAAGGAGGTAGCAGAGCAAACCTCTGGGATCTGGGTTAGATTCTTTGAGTTGATCCGTTTAAAGGCAGCC
CTGCGCTCCAAGATGACTTTTCATATACATGCTGTGAATAATCAGGGAAGAATTGTACCGCTGGACAGTG
AAGATAGCTTATCCTTTGTGAAGACGGCTTGTATGGCCGTCTATGACATTCCTGACTTACTGGGAGGCAA
TGTTGTTTAGGATCTGTGTTTTCTCGAATCATTTTTGACTTCTCAGATCTTAGTTAAAGAAAAGGAT
GGCACTGTTACCACAGAAACCAGCTCCGTAGTCTGACTGCTGTACCCAGATTCTGCTCCTGGCTGG
TGGAAGATAATGAAGTAAAATTGTCTGAGAAAAACCCAGCAAGCAGTGAAGGGGGATGAGTCTTTCTGGG
CACTTATCTAACAGGAGGAGAAGGAGCATATCTTTATTCCAGCAATCTACAGTCTGGCCTGAGGAAGGG



AATGTTCAATTTCTTCTCTAGTGGCCTTCTGTTTTCTCACTGTCGTCATAGAAGTATCATCATTTCCAAGG
 ATCAGATGAATTCATTTCTTCTATGATGGGGATTCCACCAGTACTGTTGCTGCTTCTCATAGACTT
 CAAAACATCATTGCTTCTCACCTCCCAGTTCATTTCCATGGATCAAGCAATTTTCTGATGATTGCCCTT
 TTCCCAAATCGAAGATATACCAAGCATTTTACTCAGAGGTCTTCTCCCTCTGGAAACAGCAGGATAACT
 CAGGGATCTCTTTAAAAGTGATCCAGGAAGATGGATTATCTGTGGAACAAAAGAGATTGCACTCCAGTGC
 ACAGAAGCTCTTCAAGTCCCTGAGCCAGCCTGCTGGGAGAAACGGAGTCCCTAAAGTTACTCTCAGCC
 AAACCTCCAGAGCTGGACTGGTTTCTCCAGCATTCGCCATCAGCAGCATTAGCCAGGAGCCTGTGATGC
 GGACCCATCTTCTGTGCTGCTGCAGCAAGCTGAAATCAACACTACTCACAGAATAGAAAGTGACAAGGT
 AATTATCAGCATTGTAACCGGCTCCAGGCTGTACGCTAGCGAGCTCTGTGCTTTTCTGGTCACTCTG
 CATAAGGAATGTGGCAGATGGATGGTGTATCGCCAAATCATGGACAGCTCTGAATGTTTTTATGCTGCAC
 ACTTCCAGAGATACCTTCCAGTCCCTAGAGGCCAGCAGAACCCTCTGCGGCCAGTCAAGCTACAT
 CGCAAGAAGACCAAGACTGCTGGTGGTGTACAAGGCTACACAGATGTTATTGATGTTGTCCAGGCCCTG
 CAGACCCACCAGACTCAAATGTCAAGGCCTCCTTACCATTGGTCCATCACAGCATGTGTGGAGCCCA
 TGAGCTGCTACATGGAGCACAGATTCTCTTTCTAAATGTCTTGACCAGTGTTCACAAGGCCTGGTGGAG
 TAACGTGGTATCACCAGTCAACACGGAGCAGCGGCACCCTCTCCTTGTTCAGCTGCAGAGCCTCATC
 AGGGCTGCCAATCTGCTGCAGCCTTCACTTCTGCAGAAAATGGGATTGTCACCAGGAATGAAGACATTG
 AGCTGATTCTCTCAGAAAACAGTTTTTCAAGTCTGAGATGCTACGATCTCGATATTTAATGATATCTGG
 CTGGTATGAAGTAAATGAATGTGGATCAGTCTATCCCCTAATGGTTTTCAGATCTGCGTATGGTTTGGC
 CGTCCCTTGGAGAAGACTCGCTTTGTGGCCAAATGTAAGCAATTCAGTCTCCATCAAGCCAAGTCCCT
 TCTCCGGAACATCTACCACATCCTGGGCAAGTGAAGTTTTTCAGACTGAGAGGACCATGGAGGCTCTG
 CTAACAACACTGGCCAACTCCTTGAAGTGTGAGCATGATGAGTCTTGGAAAGGCCACACCACCAGACTCC
 AAAAGCGTATCTCAAGACAGCAGCGGCAGCAGGAGTGTACCTTGTGTTTTCATCGGCTGCTCCCTGAAGG
 AAGACAGCATCAAGGACTGGCTGCGGCAGTCAAGTAAAGCAAGCCTCAGAGGAAAGCCCTGAAGACCAG
 GGGGATGCTGACGCAACAGGAGATCAGGAGCATCCACGTAACAGCCACTTGGAAACCCCTACTGACAGGC
 TACTTTTATAATGGCACCAATTTGTTAACTTCTTGGTGACAAAAGTATTTTACCACACTCATGGACC
 AGTTTATGAATGACTACGTGGAAGAAGCAACCGGAAATTGAGAAGTATAACCCAGGAGCTGGAACAGCA
 GGAGTATCATGACCTCTTTGAGCTGAAGCCC

ACGCGTACGCGGCCGCTCGAGCAGAACTCATCTCAGAAGAGGATCTGGCAGCAATGATATCCTGGATT
 ACAAGGATGACGACGATAAGGTTTAA

Protein Sequence:

>RC219829 representing NM_001009984
 Red=Cloning site Green=Tags(s)

MDVYPPRRQGLPRARSPGGSSRGPSPVSCSRLRQVQSILTQSSKSRPDGILCILGIDSRYNEGCRELAN
 LLFGLYNQNTSDFEKTGFSEEVLDVVIILIKSDSVHLYCNPVNFYLLPYVAHWRLHFHFCMTENEYEDE
 EAAEEFKITSFVDMVRDCSRIGIPYSSQGHLLQIFDMFVVEKWPIVQAFALLEGIGDGFFTMKYELQDVSL
 NLWNVYSKMDPMSLESLLSDDLVAFEHQWTSFFANFDTEIPFLLELSESQAGEPFRSYFSGHMISSHITE
 NSPNRQPFVLFGNHSTRENLNAGNFNFPSEGLHVRSTGPGGSFAKHMVAQCVPKGPLACSRTYFFGATH
 VPYLLGGDSKLPKTEQIRLLSQIYAAVIEAVLAGIACYAKTSSLTKAKEVAEQTLGSLDSFELIPFKAA
 LRSKMTFHIHAVNNQGRIVPLDSEDSL SFVKTACMAVYDIPDLLGGNGCLGSVVFSSESFLTSQILVKEK
 GTVTTETSSVVL TAAVPRFCSWLVEDNEVKLSEKTQQAVRGDESFLGTYLTGGEGAYLYSSNLQSWPEEG
 NVHFFSSGLLFSHCRHSIIISKDHMNSISFYDGDSTVAALLIDFKSLLPHLPVHFHGSNLFMLIAL
 FPKSKIYQAFYSEVSLWKQQDNSGISLKVIQEDGLSVEQKRLHSSAQKLF SALSQPAGEKRSSLKLLSA
 KLPELDWFLQHFATSSISQEPVMRTHLPVLLQQAEINTTHRIESDKVIIISIVTGLPGCHASELCAFLVTL
 HKECGRWVYRQIMDSSECFHAAHFQRYLSSALEAQNRARSAYIRKKTRLLVVLQGYTDVIDVVQAL
 QTHPDSNVKASFTIGAITACVEPMSCYMEHRFLFPKCLDQCSQGLVSNVFTSHTTEQRHPLLVLQQLS
 RAANPAAAFILAENGIIVTRNEDIELILSENSFSPEMLRSRYLMPGWYEGKLNAGSVYPLMVQICVWFG
 RPLEKTRFVAKCKAIQSSIKPSPFSGNIYHILGKVKFSDSERTMEVCYNTLANSLSIMPVLEGPPTPPDS
 KSVSQDSSGQECYLVFIGCSLKEDSIKDWLRQSAKQKQKALKTRGMLTQQEIRSIHVKRHLEPLPAG
 YFYNGTQFVNFVGDKDFHPLMDQFMNDYVEEANREIEKYNQEELEQYHDLFELKP

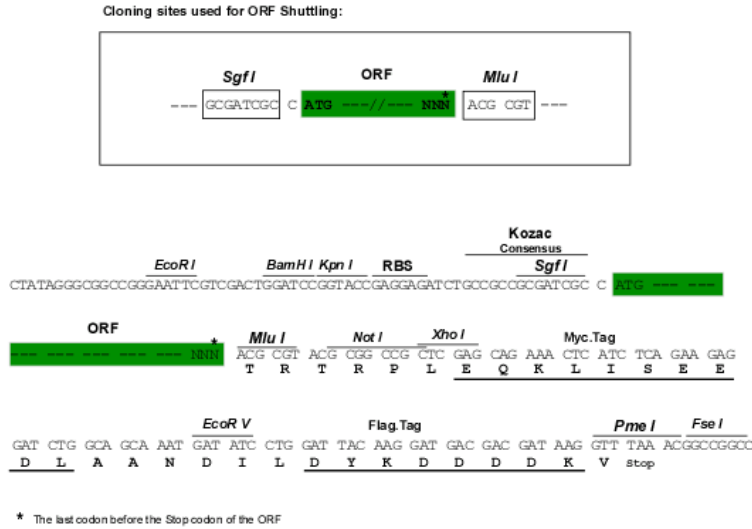
TRTRPLEQKLI SEEDLAANDILDYKDDDDKV

Chromatograms:

https://cdn.origene.com/chromatograms/mk8019_b10.zip

Restriction Sites: SgfI-MluI

Cloning Scheme:



ACCN: NM_001009984

ORF Size: 3531 bp

OTI Disclaimer: The molecular sequence of this clone aligns with the gene accession number as a point of reference only. However, individual transcript sequences of the same gene can differ through naturally occurring variations (e.g. polymorphisms), each with its own valid existence. This clone is substantially in agreement with the reference, but a complete review of all prevailing variants is recommended prior to use. [More info](#)

OTI Annotation: This clone was engineered to express the complete ORF with an expression tag. Expression varies depending on the nature of the gene.

Components: The ORF clone is ion-exchange column purified and shipped in a 2D barcoded Matrix tube containing 10ug of transfection-ready, dried plasmid DNA (reconstitute with 100 ul of water).

Reconstitution Method:

1. Centrifuge at 5,000xg for 5min.
2. Carefully open the tube and add 100ul of sterile water to dissolve the DNA.
3. Close the tube and incubate for 10 minutes at room temperature.
4. Briefly vortex the tube and then do a quick spin (less than 5000xg) to concentrate the liquid at the bottom.
5. Store the suspended plasmid at -20°C. The DNA is stable for at least one year from date of shipping when stored at -20°C.

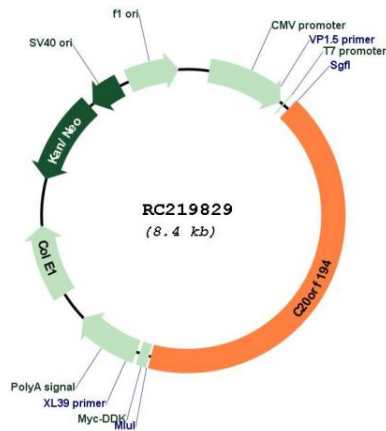
Note: Plasmids are not sterile. For experiments where strict sterility is required, filtration with 0.22um filter is required.

RefSeq: [NM_001009984.2](#), [NP_001009984.1](#)

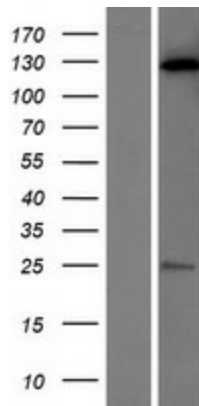
RefSeq Size: 6855 bp
 RefSeq ORF: 3534 bp
 Locus ID: 25943
 UniProt ID: [Q5TEA3](#)
 Cytogenetics: 20p13
 MW: 132.1 kDa

Gene Summary: This gene encodes an uncharacterized protein with a C-terminal coiled-coil region. The gene is located on chromosome 20p13 in a 1.8 Mb region linked to a spinocerebellar ataxia phenotype, but this gene does not appear to be a disease candidate. [provided by RefSeq, Dec 2011]

Product images:



Circular map for RC219829



Western blot validation of overexpression lysate (Cat# [LY423168]) using anti-DDK antibody (Cat# [TA50011-100]). Left: Cell lysates from un-transfected HEK293T cells; Right: Cell lysates from HEK293T cells transfected with RC219829 using transfection reagent MegaTran 2.0 (Cat# [TT210002]).