

## Product datasheet for RC219827

### CHST5 (NM\_024533) Human Tagged ORF Clone

#### Product data:

|                           |   |
|---------------------------|---|
| Product Type:             | Expression Plasmids   |
| Product Name:             | CHST5 (NM_024533) Human Tagged ORF Clone                                    |
| Tag:                      | Myc-DDK   |
| Symbol:                   | CHST5   |
| Synonyms:                 | glcNAc6ST-3; gn6st-3; hIGn6ST; I-GlcNAc-6-ST; I-GlcNAc6ST                   |
| Mammalian Cell Selection: | Neomycin  |
| Vector:                   | pCMV6-Entry (PS100001)  |
| E. coli Selection:        | Kanamycin (25 ug/mL)  |
| ORF Nucleotide Sequence:  | >RC219827 representing NM_024533<br>Red=Cloning site Blue=ORF Green=Tags(s) |

TTTTGTAATACGACTCACTATAGGGCGGCCGGAATTCGTCGACTGGATCCGGTACCGAGGAGATCTGCC  
GCC**CGATCGCC**

ATGGGCATGAGGGCCCGGTCCCTAAAGTTGCCACTCCACCCGAAGCCCCAGCCGCCGCATGTGGC  
TGCCACGGTTCTCCAGCAAGACAGTGACAGTGCTCCTCTGGCACAGACCACCTGCCTCTGCTTTCAT  
CATCTCCCGGCCAGGGCCCTCATCCCCAGCCGGCGGAGGATCGTGTGCACGTGCTGGTGTGCTCCTCG  
TGGCGCTCGGGCTCATCCTTCTGGGCCAGCTCTCAGCCAGCACCCGACGTCTTCTACCTGATGGAGC  
CCGCGTGGCATGTGTGGACCACCCTGTGCGAGGGCAGCGGCAACGCTGCACATGGCCGTGCGCGACCT  
GATGCGCTCTATCTTTTTGTGCGACATGGACGTGTTGATGCCTACATGCCACAGAGCCGAACCTGTCC  
GCCTTTTTCAACTGGGCAACGAGCCGCGCGCTGTGCTCGCCGCCGCTGCAGCGCCTTTCCCGAGGCA  
CCATCAGCAAGCAGGACGTATGCAAGACTGTGCACGCGGCAGCCATTACGCTGGCCCGGGAGGCCTG  
CCGCTCTACAGCCACGTGGTGTCAAGGAGGTGCGCTTCTTCAACTGCAGGTGCTTACCCGCTGCTC  
AGCGACCCCGCGCTCAACTGCGCATCGTGACCTGGTGCAGCACCCGCGGGCCGTGCTGCGCTCCCGG  
AGGCGCGGGCCCGATACTGGCACGCGACAACGGCATCGTGTGGCACCACCGCAAGTGGGTGGAGGC  
CGACCTCACCTGCGCCTGATTCGCGAGGTGTGCCGACGACGTCGCGCATCGCCGAGGCCGCCACACTC  
AAGCCGCCACCTTCTGCGCGCCGCTACCCGCTGGTGGCCTTCGAGGACCTGGCGCGGGAGCCGCTGG  
CAGAGATCCGCGCACTTACGCCTTACCGGCCTGACCCTCAGCCACAGCTCGAGGCCTGGATCCACAA  
CATCACCCACGGGTCGGGATCGGCAAGCCAATCGAGGCCTTCCATACTCGTCTAGGAATGCGCGCAAC  
GTCTCCAGGCCTGGCGCACGCGTTGCCCTTCACTAAGATCCTGCGCGTGCAGGAGGTGTGCGCCGGCG  
CGCTGCAGCTGCTGGGCTACCGCCTGTGACTCTGCGGACCAGCAGCGTGACCTCACCTGGATCTGGT  
GCTGCCACGAGGCCAGACCACTTCAGCTGGGCATCGCCTGAC

AG**CGGACCG**ACGCGTACGCGGCCGCTCGAGCAGAACTCATCTCAGAAGAGGATCTGGCAGCAAATGATATCC  
TGGATTACAAGGATGACGACGATAAGGTTTAA



[View online »](#)

**Protein Sequence:** >RC219827 representing NM\_024533  
Red=Cloning site Green=Tags(s)

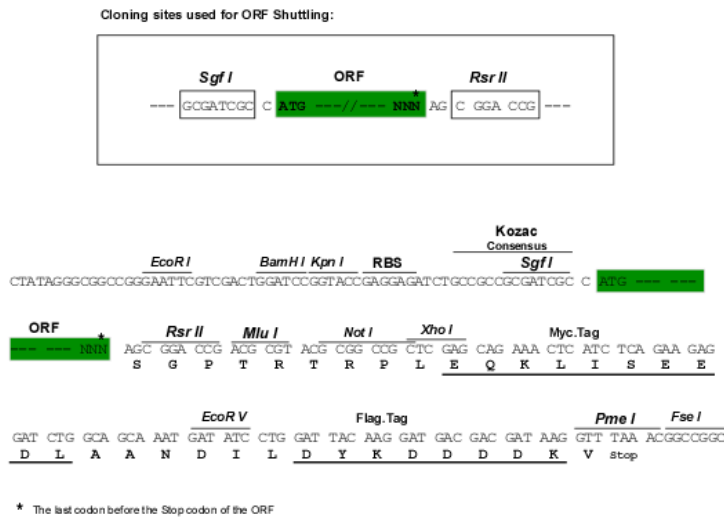
MGMRARVPKVAHSTRPPAARMWLPFRFSSKTVTVLLLAQTTCLLLFIISRPGPSSPAGGEDRVHVLVLS  
 WRS GSSFLGQLFSQHPDVFYLMPEAWHVWTTLSQGSATLHMVAVRDLMRSIFLCDMDVFDAYMPQSRNLS  
 AFFNWATSRALCSPPACSAFPRGTISKQDVCKLCTRQPFSLAREACRSYSHVVLKEVRFNLQVLYPLL  
 SDPALNLRIVHLVRDPRAVLR SREAAGPILARDNGIVLGTNGKWVEADPHLR LIREVCRSHVRIAEATL  
 KPPPFLLRGYRLVRFEDLAREPLAEIRALYAFTGLTLTPQLEAWIHNITHGSGIGKPIEAFHTSSRNARN  
 VSQAWRHALPFTKILRVQEV CAGALQLLGYRPVYSADQQRDLTLDLVLPRGPDHFSWASPD

SGPTRTRRLEQKLI SEEDLAANDILDYKDDDDKV

**Chromatograms:** [https://cdn.origene.com/chromatograms/mk8019\\_b11.zip](https://cdn.origene.com/chromatograms/mk8019_b11.zip)

**Restriction Sites:** SgfI-RsrII

**Cloning Scheme:**



**ACCN:** NM\_024533

**ORF Size:** 1233 bp

**OTI Disclaimer:** The molecular sequence of this clone aligns with the gene accession number as a point of reference only. However, individual transcript sequences of the same gene can differ through naturally occurring variations (e.g. polymorphisms), each with its own valid existence. This clone is substantially in agreement with the reference, but a complete review of all prevailing variants is recommended prior to use. [More info](#)

**OTI Annotation:** This clone was engineered to express the complete ORF with an expression tag. Expression varies depending on the nature of the gene.

**Components:** The ORF clone is ion-exchange column purified and shipped in a 2D barcoded Matrix tube containing 10ug of transfection-ready, dried plasmid DNA (reconstitute with 100 ul of water).

**Reconstitution Method:**

1. Centrifuge at 5,000xg for 5min.
2. Carefully open the tube and add 100ul of sterile water to dissolve the DNA.
3. Close the tube and incubate for 10 minutes at room temperature.
4. Briefly vortex the tube and then do a quick spin (less than 5000xg) to concentrate the liquid at the bottom.
5. Store the suspended plasmid at -20°C. The DNA is stable for at least one year from date of shipping when stored at -20°C.

**RefSeq:** [NM\\_024533.5](#)

**RefSeq Size:** 3278 bp

**RefSeq ORF:** 1236 bp

**Locus ID:** 23563

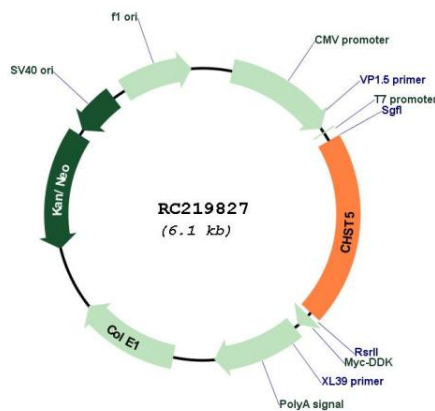
**UniProt ID:** [Q9GZS9](#)

**Cytogenetics:** 16q23.1

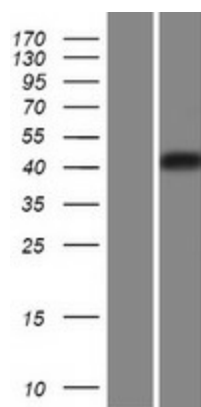
**MW:** 46 kDa

**Gene Summary:** The protein encoded by this gene belongs to the Gal/GalNAc/GlcNAc 6-O-sulfotransferase (GST) family, members of which catalyze the transfer of sulfate to position 6 of galactose (Gal), N-acetylgalactosamine (GalNAc), or N-acetylglucosamine (GlcNAc) residues within proteoglycans, and sulfation of O-linked sugars of mucin-type acceptors. Carbohydrate sulfation plays a critical role in many biologic processes. This gene is predominantly expressed in colon and small intestine. [provided by RefSeq, Aug 2011]

### Product images:



Circular map for RC219827



Western blot validation of overexpression lysate (Cat# [LY411249]) using anti-DDK antibody (Cat# [TA50011-100]). Left: Cell lysates from untransfected HEK293T cells; Right: Cell lysates from HEK293T cells transfected with RC219827 using transfection reagent MegaTran 2.0 (Cat# [TT210002]).