

Product datasheet for **RC219819**

CD30 (TNFRSF8) (NM_001243) Human Tagged ORF Clone

Product data:

Product Type:	Expression Plasmids
Product Name:	CD30 (TNFRSF8) (NM_001243) Human Tagged ORF Clone
Tag:	Myc-DDK
Symbol:	CD30
Synonyms:	CD30; D1S166E; Ki-1
Mammalian Cell Selection:	Neomycin
Vector:	pCMV6-Entry (PS100001)
E. coli Selection:	Kanamycin (25 ug/mL)



[View online »](#)

ORF Nucleotide Sequence:

>RC219819 representing NM_001243
 Red=Cloning site Blue=ORF Green=Tags(s)

TTTTGTAATACGACTCACTATAGGGCGGCCGGAATTCGTCGACTGGATCCGGTACCGAGGAGATCTGCC
 GCC**CGCATCGCC**

ATGCGCGTCTCCTCGCCGCGCTGGGACTGCTGTTCTGGGGCGCTACGAGCCTCCACAGGATCGAC
 CCTTCGAGGACACCTGTCATGGAACCCAGCCACTACTATGACAAGGCTGTGAGGAGGTGCTGTTACCG
 CTGCCCATGGGCTGTTCCCGACACAGAGTCCACAGAGGCCTACTGACTGCAGGAAGCAGTGTGAG
 CCTGACTACTACCTGGATGAGGCCGACCGCTGTACAGCCTGCGTGACTTGTCTCGAGACGACCTCGTGG
 AGAAGACGCCGTGTGCATGGAACCTCCCGTGTCTGCGAATGTCGACCCGGCATGTTCTGTTCCACGTC
 TGCCGTCAACTCCTGTGCCGCTGCTTCTTCCATTCTGTCTGTCCGGCAGGGATGATTGTCAAGTCCCA
 GGCACGGCGCAGAAGAACACGGTCTGTGAGCCGGCTTCCCAGGGGTGAGCCCTGCCTGTGCCAGCCAG
 AGAAGTCAAGGAACCCCTCAGTGGCACCATCCCCAGGCCAAGCCACCCCGGTGTCCCAGCAACCTC
 CAGTGGCAGCACCATGCCTGTAAGAGGGGGCACCCGCTCGCCAGGAAGCTGCTTCTAACTGACGAGG
 GCTCCCGACTCTCCCTCCTCTGTGGGAAGGCCTAGTTCAGATCCAGGTCTGTCCCAACACAGCCATGCC
 CAGAGGGGTCTGGTGATTGCAGAAAGCAGTGTGAGCCGACTACTACCTGGACGAGGCCGCGCCGCTGCAC
 GGCTGCGTGAGCTGTTCTCGAGATGACCTTGTGGAGAAGACGCCATGTGCATGGAACCTCCCGCACC
 TGCGAATGTCGACCTGGCATGATCTGTGCCACATCAGCCACCAACTCCTGTGCCGCTGTGTCCCCTACC
 CAATCTGTGCAGCAGACGGTCAACAAGCCCCAGGATATGGCTGAGAAGGACACCACCTTTGAGGCGCC
 ACCCTGGGGACCCAGCCGACTGCAACCCACCCAGAGAATGGCGAGGCGCCTGCCAGCACCAGCCCC
 ACTCAGAGCTTGTGGTGGACTCCAGGCCAGTAAGACGCTGCCATCCCAACCAGCGCTCCCGTCGCTC
 TCTCCTCACGGGAAGCCCGTCTGGATGCAGGGCCAGTGTCTTCTGGGTGATCCTGGTGTGTTGT
 GGTGGTCGGCTCCAGCGCTTCTCCTGTGCCACCGGAGGGCCTGCAGGAAGCGAATTCGGCAGAAGCTC
 CACCTGTGCTACCCGGTCCAGACCTCCCAGCCAAAGCTAGAGCTTGTGGATTCCAGACCCAGGAGGAGCT
 CAACGCAGCTGAGGAGTGGTGCCTCGGTGACAGAACCCGTCGCGGAAGAGCGAGGGTTAATGAGCCAGCC
 ACTGATGGAGACCTGCCACAGCGTGGGGCAGCCTACCTGGAGAGCCTGCCGCTGCAGGATGCCAGCCCC
 GCCGGGGCCCCCTCGTCCCCAGGGACCTTCTGAGCCCCGGGTCCACGGAGCACACCAATAACAAGA
 TTGAGAAAATCTACATCATGAAGGCTGACACCGTATCGTGGGGACCGTGAAGGCTGAGCTGCCGGAGGG
 CCGGGGCTGGCGGGGCCAGCAGAGCCGAGTTGGAGGAGGAGCTGGAGGCGGACCATACCCCCACTAC
 CCCGAGCAGGAGACAGAACCCTCTGGGCAGCTGCAGCGATGTCATGCTCTCAGTGAAGAGGAAGGGA
 AAGAAGACCCCTTGCCACAGCTGCCTCTGAAAG

ACGCGTACGCGGCCGCTCGAGCAGAAACTCATCTCAGAAGAGGATCTGGCAGCAAATGATATCCTGGATT
 ACAAGGATGACGACGATAAGGTTTAA

Protein Sequence:

>RC219819 representing NM_001243
 Red=Cloning site Green=Tags(s)

MRVLLAALGLLFLGALRAFPQDRPFEDTCHGNPSHYDKAVRRCYRCPMGLFPTQQCPQRPTDCRKQCE
 PDYYLDEADRCTACVTCRDDLVEKTPCAWNSRVCECRPGMFCSTSAVNSCARCFFHVSVPAGMIVKFP
 GTAQKNTVCEPASPGVSPACASPENCKEPSSGIPQAKPTVSPATSSASTMPVRRGTRLAQEAAASKLTR
 APDSPSSVGRPSSDPLSPTQPCPEGSGDCRQCEPDYYLDEAGRCTACVSCSRDDLVEKTPCAWNSRST
 CECRPGMICATSATNSCARCVPYPICAAETVTKPQDMAEKDTTFEAPPLGTQPCNPTPENGEAPASTSP
 TQSLLVDSQASKTLPIPTSAPVALSSTGKPVLDAGPVLFWVILVLVVVVGSSAFLLCHRRACRKRIRQKL
 HLCYPVQTSQPKLELVDSRPRRSSTQLRSGASVTEPVAEERGLMSQPLMETCHSVGAAYLESPLQDASP
 AGGPSSPRDLPEPRVSTEHTNKNIEKIYIMKADTVIVGTVKAELPEGRGLAGPAEPELEEELEADHTPHY
 PEQETEPPLGSCSDVMLSVEEKGEDPLPTAASGK

TRTRPLEQKLISEEDLAANDILDYKDDDDKV

Chromatograms:

https://cdn.origene.com/chromatograms/ja1869_h02.zip

Restriction Sites: SgfI-MluI

Cloning Scheme:



ACCN: NM_001243

ORF Size: 1785 bp

OTI Disclaimer: Due to the inherent nature of this plasmid, standard methods to replicate additional amounts of DNA in E. coli are highly likely to result in mutations and/or rearrangements. Therefore, OriGene does not guarantee the capability to replicate this plasmid DNA. Additional amounts of DNA can be purchased from OriGene with batch-specific, full-sequence verification at a reduced cost. Please contact our customer care team at custsupport@origene.com or by calling 301.340.3188 option 3 for pricing and delivery.

The molecular sequence of this clone aligns with the gene accession number as a point of reference only. However, individual transcript sequences of the same gene can differ through naturally occurring variations (e.g. polymorphisms), each with its own valid existence. This clone is substantially in agreement with the reference, but a complete review of all prevailing variants is recommended prior to use. [More info](#)

OTI Annotation: This clone was engineered to express the complete ORF with an expression tag. Expression varies depending on the nature of the gene.

Components: The ORF clone is ion-exchange column purified and shipped in a 2D barcoded Matrix tube containing 10ug of transfection-ready, dried plasmid DNA (reconstitute with 100 ul of water).

Reconstitution Method:

1. Centrifuge at 5,000xg for 5min.
2. Carefully open the tube and add 100ul of sterile water to dissolve the DNA.
3. Close the tube and incubate for 10 minutes at room temperature.
4. Briefly vortex the tube and then do a quick spin (less than 5000xg) to concentrate the liquid at the bottom.
5. Store the suspended plasmid at -20°C. The DNA is stable for at least one year from date of shipping when stored at -20°C.

RefSeq: [NM_001243.5](#)

RefSeq Size: 3686 bp

RefSeq ORF: 1788 bp

Locus ID: 943

UniProt ID: [P28908](#)

Cytogenetics: 1p36.22

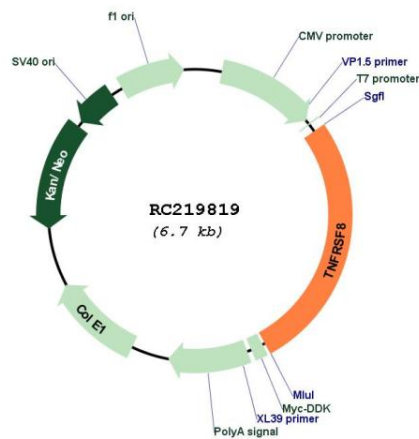
Protein Families: Druggable Genome, ES Cell Differentiation/IPS, Stem cell - Pluripotency, Transmembrane

Protein Pathways: Cytokine-cytokine receptor interaction

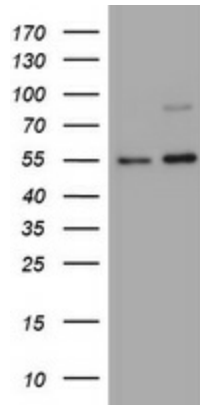
MW: 63.75 kDa

Gene Summary: The protein encoded by this gene is a member of the TNF-receptor superfamily. This receptor is expressed by activated, but not by resting, T and B cells. TRAF2 and TRAF5 can interact with this receptor, and mediate the signal transduction that leads to the activation of NF-kappaB. This receptor is a positive regulator of apoptosis, and also has been shown to limit the proliferative potential of autoreactive CD8 effector T cells and protect the body against autoimmunity. Two alternatively spliced transcript variants of this gene encoding distinct isoforms have been reported. [provided by RefSeq, Jul 2008]

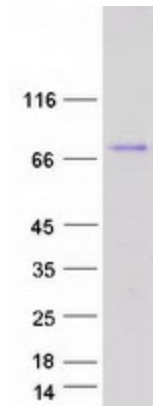
Product images:



Circular map for RC219819



HEK293T cells were transfected with the pCMV6-ENTRY control (Cat# [PS100001], Left lane) or pCMV6-ENTRY TNFRSF8 (Cat# RC219819, Right lane) cDNA for 48 hrs and lysed. Equivalent amounts of cell lysates (5 ug per lane) were separated by SDS-PAGE and immunoblotted with anti-TNFRSF8(Cat# [TA801630]). Positive lysates [LY420050] (100ug) and [LC420050] (20ug) can be purchased separately from OriGene.



Coomassie blue staining of purified TNFRSF8 protein (Cat# [TP319819]). The protein was produced from HEK293T cells transfected with TNFRSF8 cDNA clone (Cat# RC219819) using MegaTran 2.0 (Cat# [TT210002]).