

## Product datasheet for RC219814

### SIGLEC6 (NM\_198846) Human Tagged ORF Clone

#### Product data:

Product Type:	Expression Plasmids
Product Name:	SIGLEC6 (NM_198846) Human Tagged ORF Clone
Tag:	Myc-DDK
Symbol:	SIGLEC6
Synonyms:	CD33L; CD33L1; CD33L2; CD327; CDW327; OBBP1
Mammalian Cell Selection:	Neomycin
Vector:	pCMV6-Entry (PS100001)
E. coli Selection:	Kanamycin (25 ug/mL)
ORF Nucleotide Sequence:	>RC219814 representing NM_198846 Red=Cloning site Blue=ORF Green=Tags(s)

TTTTGTAATACGACTCACTATAGGGCGGCCGGAATTCGTCGACTGGATCCGGTACCGAGGAGATCTGCC  
GCC**CGATCGCC**

ATGCAGGGAGCCAGGAAGCCTCCGCCTCAGAGATGCTACCGCTGCTGCTGCCCTGCTGTGGCAGGGG  
CCCTGGCTCAGGAGCGGAGATTCAGCTGGAGGGGCCAGAGTCACTGACGGTGCAGGAGGGTCTGTGCGT  
CCTCGTACCCTGCAGATTGCCACTACCCTCCAGCCTCGTACTATGGTTATGGCTACTGGTTCTTGAA  
GGGCTGATGTTCCAGTGGCCACAAACGACCCAGACGAAGAAGTGCAGGAGGAGACCCGGGGCCGATTCC  
ACCTCCTCTGGGATCCCAGAAGGAAGAACTGCTCCCTGAGCATCAGAGATGCCCGGAGGAGGACAATGC  
TGCACTACTTTTCGGTTGAAGTCCAAATGGATGAAATACGGTTATACATCTTCCAGCTCTCTGTGCGT  
GTGATGGCCCTGACCCACAGGCCAACATCTCCATCCCAGGGACCCTGGAGTCTGGCCATCCCAGCAATC  
TGACCTGCTCTGTGCCCTGGGTCTGTGAGCAGGGGACGCCCCCATCTTCTCCTGGATGTGAGCTGCCCC  
CACCTCCTGGGCCCCAGGACCACCCAGTCCCTCGGTGCTCACAATCACCCACGGCCCCAGGACCACAGC  
ACCAACCTCACCTGTGAGGTGACGTTCCCTGGAGCCGGTGTGACCATGGAGAGAACCATCCAGCTCAATG  
TCTCCTATGCTCCACAGAAAGTGGCCATCAGCATCTTCCAAGGAAACAGCGCAGCCTTCAAATCCTGCA  
AAACACCTCGTCCCTCCCTGTCTGGAGGGCCAGGCTCTGCGGCTGCTCTGTGATGCTGACGGCAACCCC  
CCTGCACACCTGAGTGGTCCAGGGCTTCCCCGCCCTGAACGCCACCCCATCCAATACCGGGGTCC  
TGGAGCTGCCTCAAGTAGGGTCTGCAGAAGAAGGAGATTTACCTGCCGTGCTCAGCATCCTCTGGGCTC  
CCTGCAAATCTCTGAGTCTCTTTGTGATTGGTCATCAGCACCAGTCCAGACAGGCATAGTTTCAGA  
CCACCCTGC

**ACGCGT**ACGCGGCCGCTCGAGCAGAACTCATCTCAGAAGAGGATCTGGCAGCAAATGATATCCTGGATT  
ACAAGGATGACGACGATAAGGTTTAA



[View online »](#)



**Reconstitution Method:**

1. Centrifuge at 5,000xg for 5min.
2. Carefully open the tube and add 100ul of sterile water to dissolve the DNA.
3. Close the tube and incubate for 10 minutes at room temperature.
4. Briefly vortex the tube and then do a quick spin (less than 5000xg) to concentrate the liquid at the bottom.
5. Store the suspended plasmid at -20°C. The DNA is stable for at least one year from date of shipping when stored at -20°C.

**RefSeq:** [NM\\_198846.6](#)

**RefSeq Size:** 2536 bp

**RefSeq ORF:** 1062 bp

**Locus ID:** 946

**UniProt ID:** [O43699](#)

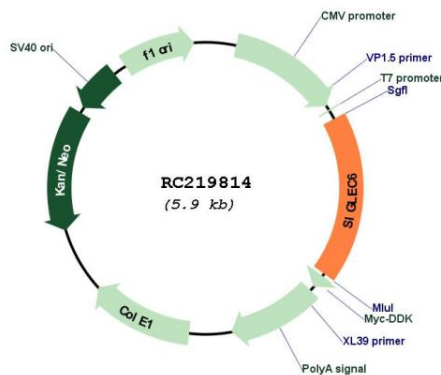
**Cytogenetics:** 19q13.41

**Protein Families:** Druggable Genome, Secreted Protein, Transmembrane

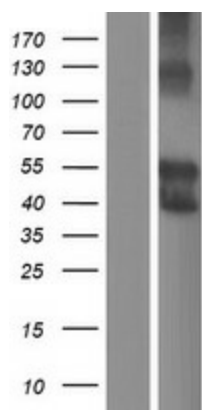
**MW:** 36.1 kDa

**Gene Summary:** This gene encodes a member of the SIGLEC (sialic acid binding immunoglobulin-like lectin) family of proteins. The encoded transmembrane receptor binds sialyl-TN glycans and leptin. Placental expression of the encoded protein is upregulated in preeclampsia. [provided by RefSeq, Jul 2016]

## Product images:



Circular map for RC219814



Western blot validation of overexpression lysate (Cat# [LY404755]) using anti-DDK antibody (Cat# [TA50011-100]). Left: Cell lysates from untransfected HEK293T cells; Right: Cell lysates from HEK293T cells transfected with RC219814 using transfection reagent MegaTran 2.0 (Cat# [TT210002]).