

Product datasheet for RC219806L1

POLK (NM_016218) Human Tagged Lenti ORF Clone

Product data:

Product Type:	Expression Plasmids
Product Name:	POLK (NM_016218) Human Tagged Lenti ORF Clone
Tag:	Myc-DDK
Symbol:	POLK
Synonyms:	DINB1; DINP; POLQ
Mammalian Cell Selection:	None
Vector:	pLenti-C-Myc-DDK (PS100064)
E. coli Selection:	Chloramphenicol (34 ug/mL)
ORF Nucleotide Sequence:	The ORF insert of this clone is exactly the same as(RC219806).
Restriction Sites:	SgfI-MluI
Cloning Scheme:	

Cloning sites used for ORF Shuttling:



* The last codon before the Stop codon of the ORF.

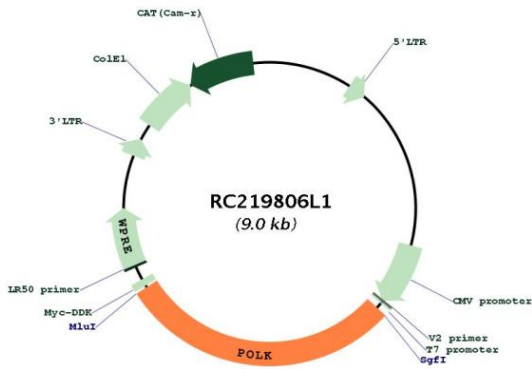
ACCN:	NM_016218
ORF Size:	2610 bp



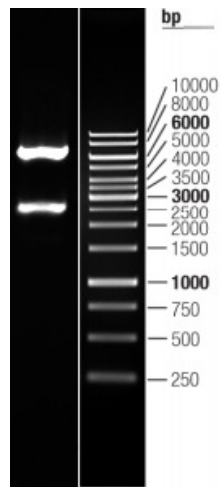
[View online »](#)

OTI Disclaimer:	The molecular sequence of this clone aligns with the gene accession number as a point of reference only. However, individual transcript sequences of the same gene can differ through naturally occurring variations (e.g. polymorphisms), each with its own valid existence. This clone is substantially in agreement with the reference, but a complete review of all prevailing variants is recommended prior to use. More info
OTI Annotation:	This clone was engineered to express the complete ORF with an expression tag. Expression varies depending on the nature of the gene.
Components:	The ORF clone is ion-exchange column purified and shipped in a 2D barcoded Matrix tube containing 10ug of transfection-ready, dried plasmid DNA (reconstitute with 100 ul of water).
Reconstitution Method:	<ol style="list-style-type: none">1. Centrifuge at 5,000xg for 5min.2. Carefully open the tube and add 100ul of sterile water to dissolve the DNA.3. Close the tube and incubate for 10 minutes at room temperature.4. Briefly vortex the tube and then do a quick spin (less than 5000xg) to concentrate the liquid at the bottom.5. Store the suspended plasmid at -20°C. The DNA is stable for at least one year from date of shipping when stored at -20°C.
RefSeq:	NM_016218.1
RefSeq Size:	4074 bp
RefSeq ORF:	2613 bp
Locus ID:	51426
UniProt ID:	Q9UBT6
Cytogenetics:	5q13.3
Domains:	IMS, ZnF_Rad18
Protein Families:	Druggable Genome
MW:	98.6 kDa
Gene Summary:	This gene encodes a member of the DNA polymerase type-Y family of proteins. The encoded protein is a specialized DNA polymerase that catalyzes translesion DNA synthesis, which allows DNA replication in the presence of DNA lesions. Human cell lines lacking a functional copy of this gene exhibit impaired genome integrity and enhanced susceptibility to oxidative damage. Mutations in this gene that impair enzyme activity may be associated with prostate cancer in human patients. [provided by RefSeq, Sep 2016]

Product images:



Circular map for RC219806L1



Double digestion of RC219806L1 using SgfI-MluI