

Product datasheet for RC219788L1

Neurexin II alpha (NRXN2) (NM_015080) Human Tagged Lenti ORF Clone

Product data:

Product Type:	Expression Plasmids
Product Name:	Neurexin II alpha (NRXN2) (NM_015080) Human Tagged Lenti ORF Clone
Tag:	Myc-DDK
Symbol:	Neurexin II alpha
Mammalian Cell Selection:	None
Vector:	pLenti-C-Myc-DDK (PS100064)
E. coli Selection:	Chloramphenicol (34 ug/mL)
ORF Nucleotide Sequence:	The ORF insert of this clone is exactly the same as(RC219788).
Restriction Sites:	Sgfl-MluI
Cloning Scheme:	

Cloning sites used for ORF Shuttling:



* The last codon before the Stop codon of the ORF.

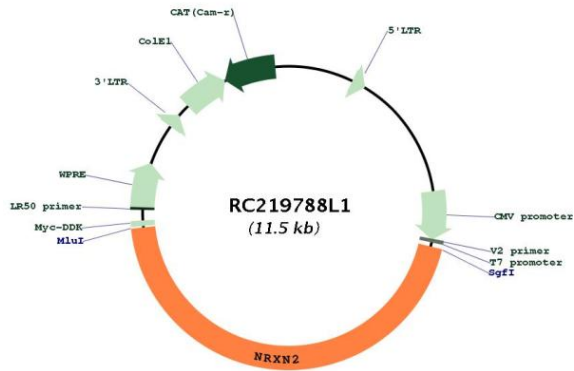
ACCN:	NM_015080
ORF Size:	5136 bp



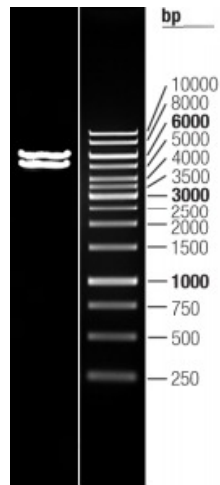
[View online »](#)

OTI Disclaimer:	The molecular sequence of this clone aligns with the gene accession number as a point of reference only. However, individual transcript sequences of the same gene can differ through naturally occurring variations (e.g. polymorphisms), each with its own valid existence. This clone is substantially in agreement with the reference, but a complete review of all prevailing variants is recommended prior to use. More info
OTI Annotation:	This clone was engineered to express the complete ORF with an expression tag. Expression varies depending on the nature of the gene.
Components:	The ORF clone is ion-exchange column purified and shipped in a 2D barcoded Matrix tube containing 10ug of transfection-ready, dried plasmid DNA (reconstitute with 100 ul of water).
Reconstitution Method:	<ol style="list-style-type: none"> 1. Centrifuge at 5,000xg for 5min. 2. Carefully open the tube and add 100ul of sterile water to dissolve the DNA. 3. Close the tube and incubate for 10 minutes at room temperature. 4. Briefly vortex the tube and then do a quick spin (less than 5000xg) to concentrate the liquid at the bottom. 5. Store the suspended plasmid at -20°C. The DNA is stable for at least one year from date of shipping when stored at -20°C.
RefSeq:	NM_015080.2
RefSeq Size:	6616 bp
RefSeq ORF:	5139 bp
Locus ID:	9379
UniProt ID:	Q9P2S2
Cytogenetics:	11q13.1
Protein Families:	Druggable Genome, Transmembrane
Protein Pathways:	Cell adhesion molecules (CAMs)
MW:	184.98 kDa
Gene Summary:	This gene encodes a member of the neurexin gene family. The products of these genes function as cell adhesion molecules and receptors in the vertebrate nervous system. These genes utilize two promoters. The majority of transcripts are produced from the upstream promoter and encode alpha-neurexin isoforms while a smaller number of transcripts are produced from the downstream promoter and encode beta-neuresin isoforms. The alpha-neurexins contain epidermal growth factor-like (EGF-like) sequences and laminin G domains, and have been shown to interact with neurexophilins. The beta-neurexins lack EGF-like sequences and contain fewer laminin G domains than alpha-neurexins. Alternative splicing and the use of alternative promoters may generate thousands of transcript variants (PMID: 12036300, PMID: 11944992).[provided by RefSeq, Jun 2010]

Product images:



Circular map for RC219788L1



Double digestion of RC219788L1 using SgfI and MluI