

Product datasheet for **RC219786**

C7orf26 (NM_024067) Human Tagged ORF Clone

Product data:

Product Type:	Expression Plasmids
Product Name:	C7orf26 (NM_024067) Human Tagged ORF Clone
Tag:	Myc-DDK
Symbol:	C7orf26
Mammalian Cell Selection:	Neomycin
Vector:	pCMV6-Entry (PS100001)
E. coli Selection:	Kanamycin (25 ug/mL)



[View online »](#)

ORF Nucleotide Sequence:

>RC219786 representing NM_024067
 Red=Cloning site Blue=ORF Green=Tags(s)

TTTTGTAATACGACTCACTATAGGGCGGCCGGAATTCGTCGACTGGATCCGGTACCGAGGAGATCTGCC
 GCC**CGATCGCC**

ATGAGCGACATCCGCCACTCGTGCTGCGCCGCGATGCGCTGAGCGCCGCAAGGAGGTGTGTACCACC
 TGGACATCTACTTCAGCAGCCAGCTGCAGAGCGCGCCGCTGCCATCGTGGACAAGGGCCCGTGGAGCT
 GCTGGAGGAGTTCGTGTTCCAGGTGCCAAGGAGCGCAGCGCGCAGCCCAAGAGACTGAATTCCTTCAG
 GAGCTTCAACTTCTTGAATCATGTGCAATATTTCCAGGAGCAAACCAAGGACTCTGTTCCGCGAGATTA
 TTTTTTCACTCCCTTTTCAGCCCTCAAGGGAACAAGCCGATGACAGCCGGATGAGCTTGTGGGAAACT
 GGTCTCCATGGCGGTGGCTGTGTGCGAATCCCGGTGTTGGAGTGTGCTGCCTCCTGGCTTCAGCGGACG
 CCCGTGGTTTACTGTGTGAGGTTAGCCAAGGCCCTGTAGATGACTACTGCTGTTGGTGCCGGATCCA
 TTCAGACGCTGAAGCAGATATTCAGTGCCAGCCGAGATTCTGCTGCCAGTTCATCACCTCCGTTACCGC
 GCTCTATGACCTGTCATCAGATGACCTCATTCCACCTATGGACTTGCTTCAAATGATTGTCACCTGGATT
 TTTGAGGACCAAGGTTGATTCTCATCACTTTTTTAAATACTCCGATTGCGGCCAATCTGCCAATAGGAT
 TCTTAGAGCTCACCCCGCTCGTTGGATTGATCCGCTGGTGCCTGAAGGCACCCCTGGCTTATAAAAGGAA
 AAAGAAGCCCCCTTATCCAATGGCCATGTGAGCAACAAGGTCAAAAAGGACCCGGGCGTGGGGATGGAC
 AGAGACTCCCACCTCTTGTACTCAAACTCCACCTCAGCGTCTGCAAGTGTCTATGACGCTGCAGCTGC
 ACCTGACCGAGAAGAATCTGTATGGGCGCTGGGGCTGATCCTCTTCGACCACATGGTCCCGCTGGTAGA
 GGAGATCAACAGGTTGGCGGATGAAGTGAACCCCTCAACGCCTCCAGGAGATTGAGCTCTCGTGGAC
 CGGCTGGCGCAGGCTCTGCAGGTGGCCATGGCCCTCAGGAGCTGCTGTGCACGAGAGATGACCTGAGAA
 CTTTGTGCTCCAGGCTGCCCATATAACCTCCTCCAGCTGGTGTCTCGGGTCCCGTGCAGCAGTCCCG
 TCACGCCGCGCTCCCCCGGGTCTACCCCCACATCCACACGCCCCCGCTGGGCTACGGGGCTGTCCCG
 GCCACCCCGCCGCCACCCCGCCTGCCACGCACCCCGGCCACACCTTCATCTCCGGCGTACCTTTT
 CCTTCAGGCCATCCGC

ACGCGTACGCGGCCGCTCGAGCAGAACTCATCTCAGAAGAGGATCTGGCAGCAAATGATATCTGGATT
 ACAAGGATGACGACGATAAGGTTTAA

Protein Sequence:

>RC219786 representing NM_024067
 Red=Cloning site Green=Tags(s)

MSDIRHSLRRDAL SAAKEVLYHLDIYFSSQLQSAPLPIVDKGPVELLEEFVQVPKERSAQPKRLNSLQ
 ELQLEIMCNYFQEQTKDSVRQIIFSSLFSPQGNKADDSRMSLLGKLVSMVAVCRIPVLECAASWLQRT
 PVVYCVRLAKALVDDYCLVPGSIQTLKQIFASPRFCCQFITSVTALYDLSSDDLIPMDLLEMIVTWI
 FEDPRLILITFLNTPIAANLPIGFLELTPLVGLIRWCVKAPLAYKRKKKPPLSNGHVSNNKVTKDPGVGMD
 RDSHLLYSKHLHLSVLQVLMTLQLHLTEKNLYGRLGLILFDHMPVPLVEEINRLADELNPLNASQEIELSLD
 RLAQALQVAMASGALLCTRDDLRTLCSRLPHNNLLQLVISGPVQQSPHAALPPGFYPHIHTPPLGYGAVP
 AHPAAHPALPTHGHTFISGVTFPFRPIR

TRTRPLEQKLISEEDLAANDILDYKDDDDKV

Chromatograms:

https://cdn.origene.com/chromatograms/mk6483_g12.zip

Restriction Sites:

SgfI-MluI

Cloning Scheme:


ACCN: NM_024067

ORF Size: 1347 bp

OTI Disclaimer: The molecular sequence of this clone aligns with the gene accession number as a point of reference only. However, individual transcript sequences of the same gene can differ through naturally occurring variations (e.g. polymorphisms), each with its own valid existence. This clone is substantially in agreement with the reference, but a complete review of all prevailing variants is recommended prior to use. [More info](#)

OTI Annotation: This clone was engineered to express the complete ORF with an expression tag. Expression varies depending on the nature of the gene.

Components: The ORF clone is ion-exchange column purified and shipped in a 2D barcoded Matrix tube containing 10ug of transfection-ready, dried plasmid DNA (reconstitute with 100 ul of water).

Reconstitution Method:

1. Centrifuge at 5,000xg for 5min.
2. Carefully open the tube and add 100ul of sterile water to dissolve the DNA.
3. Close the tube and incubate for 10 minutes at room temperature.
4. Briefly vortex the tube and then do a quick spin (less than 5000xg) to concentrate the liquid at the bottom.
5. Store the suspended plasmid at -20°C. The DNA is stable for at least one year from date of shipping when stored at -20°C.

RefSeq: [NM_024067.2](#), [NP_076972.2](#)

RefSeq Size: 1913 bp

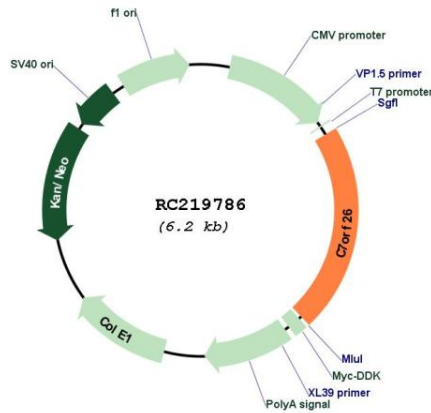
RefSeq ORF: 1350 bp

Locus ID: 79034

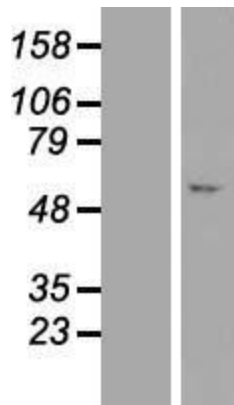
UniProt ID: [Q96N11](#)

Cytogenetics: 7p22.1
 MW: 49.9 kDa

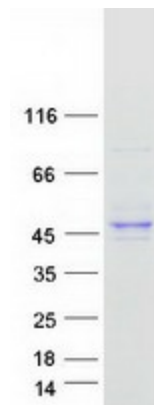
Product images:



Circular map for RC219786



Western blot validation of overexpression lysate (Cat# [LY411383]) using anti-DDK antibody (Cat# [TA50011-100]). Left: Cell lysates from untransfected HEK293T cells; Right: Cell lysates from HEK293T cells transfected with RC219786 using transfection reagent MegaTran 2.0 (Cat# [TT210002]).



Coomassie blue staining of purified C7orf26 protein (Cat# [TP319786]). The protein was produced from HEK293T cells transfected with C7orf26 cDNA clone (Cat# RC219786) using MegaTran 2.0 (Cat# [TT210002]).