

Product datasheet for RC219780

TMEM250 (NM_152833) Human Tagged ORF Clone

Product data:

Product Type: Expression Plasmids
Product Name: TMEM250 (NM_152833) Human Tagged ORF Clone
Tag: Myc-DDK
Symbol: TMEM250
Synonyms: C9orf69
Mammalian Cell Selection: Neomycin
Vector: pCMV6-Entry (PS100001)
E. coli Selection: Kanamycin (25 ug/mL)
ORF Nucleotide Sequence: >RC219780 representing NM_152833
Red=Cloning site Blue=ORF Green=Tags(s)

TTTTGTAATACGACTCACTATAGGGCGGCCGGAATTCGTCGACTGGATCCGGTACCGAGGAGATCTGCC
GCC**CGATCGCC**

ATGCTCTGGATTCTGCGGAGGCACCTCCATTCTTTCTGGCTTTTTTTCGCGGGGAGGGCTTTGGCCCT
CTTTCTTTGAGGGAACACCGTCAAAGAAAGCCTGGGAGATCGAGGCTTCAGTGAGCCAGGATGGAAACGC
GTGTCCCAAGTGTCCGGAGCAGGCGGCAGAGGCCCTCAGTCCGCAACACAGCCCCAGAGCCTGTGTGGC
ACCAGCAGCATCTTAGAGCCCCAGGTATATGCTGAGATCTTATCTCACGCTGTCTCCAGTGTCTGGGGG
GCCCAAATGATGGCACAGGGTCAGGTGGGCTGGAGGGGCGCAGATGCCTGTGTTCCAGGAGGGTGGCCAC
CATGGGCCGAGGTCTCACCCAGGACCCCTTGCTCTGCTCCTCAGCCTGCAGTCACGGCAGCACTATGGT
GGACTGCCCATGGCCGTG

AG**CGGACCG**ACGCGTACGCGGCCGCTCGAGCAGAACTCATCTCAGAAGAGGATCTGGCAGCAAATGATATCC
TGGATTACAAGGATGACGACGATAAGGTTTAA

Protein Sequence: >RC219780 representing NM_152833
Red=Cloning site Green=Tags(s)

MLWISAEAPPFLSGFFCGGLWASFFEGTPSKKAWIEIASVSQDGNACPKCPEQAAEASVRQTQPQSLCG
TSSILEPQVYAEILSHAVLQCLGGPNDGTGSSGLEGRCLCSGRVATMGRGLTQDPLLSSALQSRQHYG
GLPMAV

SGPTRRRLEQKLI SEEDLAANDILDYKDDDDKV

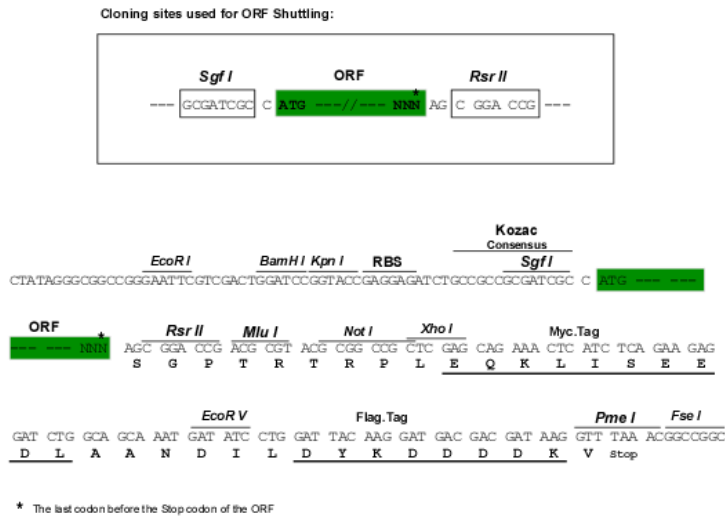
Chromatograms: https://cdn.origene.com/chromatograms/mg3521_e06.zip



[View online »](#)

Restriction Sites: SgfI-RsrII

Cloning Scheme:



ACCN: NM_152833

ORF Size: 438 bp

OTI Disclaimer: The molecular sequence of this clone aligns with the gene accession number as a point of reference only. However, individual transcript sequences of the same gene can differ through naturally occurring variations (e.g. polymorphisms), each with its own valid existence. This clone is substantially in agreement with the reference, but a complete review of all prevailing variants is recommended prior to use. [More info](#)

OTI Annotation: This clone was engineered to express the complete ORF with an expression tag. Expression varies depending on the nature of the gene.

Components: The ORF clone is ion-exchange column purified and shipped in a 2D barcoded Matrix tube containing 10ug of transfection-ready, dried plasmid DNA (reconstitute with 100 ul of water).

Reconstitution Method:

1. Centrifuge at 5,000xg for 5min.
2. Carefully open the tube and add 100ul of sterile water to dissolve the DNA.
3. Close the tube and incubate for 10 minutes at room temperature.
4. Briefly vortex the tube and then do a quick spin (less than 5000xg) to concentrate the liquid at the bottom.
5. Store the suspended plasmid at -20°C. The DNA is stable for at least one year from date of shipping when stored at -20°C.

RefSeq: [NM_152833.1](#), [NP_690046.1](#)

RefSeq Size: 2805 bp

RefSeq ORF: 420 bp

Locus ID: 90120

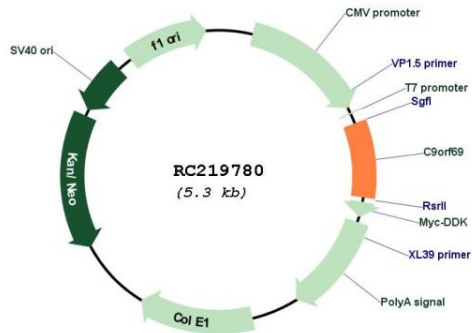
UniProt ID: [H0YL14](#)

Cytogenetics: 9q34.3

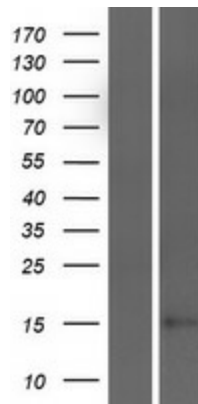
MW: 13.6 kDa

Gene Summary: May play a role in cell proliferation by promoting progression into S phase.[UniProtKB/Swiss-Prot Function]

Product images:



Circular map for RC219780



Western blot validation of overexpression lysate (Cat# [LY407291]) using anti-DDK antibody (Cat# [TA50011-100]). Left: Cell lysates from untransfected HEK293T cells; Right: Cell lysates from HEK293T cells transfected with RC219780 using transfection reagent MegaTran 2.0 (Cat# [TT210002]).