

Product datasheet for **RC219771**

CNOT6 (NM_015455) Human Tagged ORF Clone

Product data:

Product Type:	Expression Plasmids
Product Name:	CNOT6 (NM_015455) Human Tagged ORF Clone
Tag:	Myc-DDK
Symbol:	CNOT6
Synonyms:	CCR4; Ccr4a
Mammalian Cell Selection:	Neomycin
Vector:	pCMV6-Entry (PS100001)
E. coli Selection:	Kanamycin (25 ug/mL)



[View online »](#)

ORF Nucleotide Sequence:

>RC219771 representing NM_015455
 Red=Cloning site Blue=ORF Green=Tags(s)

TTTTGTAATACGACTCACTATAGGGCGGCCGGAATTCGTCGACTGGATCCGGTACCGAGGAGATCTGCC
 GCC**CGCATCGCC**

ATGCCAAAGAAAAATACGAGCCCCCTGACCCCTCGGAGGATGTATACAATTATGTCTTCTGAGGAAGCAG
 CAAATGGAAAGAAATCCCACTGGGCAGAGCTTGAATAAGTGAAAAAGTAAGAAGCTTAAGCGCATCTTT
 GTGGTCACTAACTCACCTGACAGCTTTGCATTTGAGTGACAATCCCTGTCCCGAATTCCTTCAGACATT
 GCCAAGCTTCACAATCTGGTGTATTTGGACCTGTCATCTAATAAAAATTCGTAGCTTACCCGAGAAGCTCG
 GAAACATGGTATCACTCAGGGAGCTCCATTTAAATAACAACCTGTTACGAGTTCTACCTTTTGGCTGGG
 AAAACTGTTTCAGTTGCAGACTTTAGGCCTGAAAGGAAATCCCTTACCCAGGATATATTGAACCTTTAT
 CAGGAACCAGATGGAACAAGACGGCTGCTGAACATTTTGTGATAATTTGTCAGGTACTGCAAAAAGAA
 TTACAACAGAACAACCACCTCCAAGTCTTGGATTATGTTACAAGAACCAGATAGGACAAGGCCAAGCTGC
 CTTGTTTTCTGTCATGTCTATAATGTTCTTTGTGATAAATATGCGACCCGGCAGTTATACGGCTACTGT
 CCATCATGGGCGCTAAACTGGGACTACAGGAAAAAGGCCATTATCAAGAAATCTTGAGCTGCAATGCTG
 ATATCGTAAGTCTTCAGGAGTTGAAACGGAACAGTATTACAGTTTTTTCTGGTAGAGCTGAAAGAAGC
 TGGCTATAATGGATTCTTCAGTCCTAAGCTAGAGCTAGGACAATGTCAGAAACAAGAAAGGAAACATGTT
 GATGGCTGTGCAATATTCTCAAGACAGAAAAATTTACTTTGGTTTCAAGAACACACTGTTGAATTTAATC
 AGCTAGCCATGGCAAATCTGAGGGTCTGAAGCTATGCTGAACAGAGTCATGACAAAAGATAACATTGG
 GGTTGCAGTACTGCTAGAACTTCGGAAGGAATCGATTGAAATGCCGTCTGGAAAGCCACATCTTGGAA
 GAAAAACAACCTATTCTGTGGCTAACGCCACATGCATTGGGACCCTGAATACTCTGATGTGAAGTTGG
 TACAAACTATGATGTTCCCTCTCAGAAGTGAAGAACATTATGATAAAGCCTCTCGCAACCTCAAATCCAG
 TGTTTTGGGAGAATTTGGAACCTATCCACTTGTGTTATGTGCAGATCTTAATCTTTGCCAGACTCTGGT
 GTTGTAGAATATTTGAGCACAGGTGGAGTAGAAAACAAATCACAAAGACTTTAAGGAGTTGAGGTATAATG
 AAAGTCTCACAACTTCAGCTGTCATGGGAAGAAAGGAACCAACATGGAAGGATCACTCATGGTTTCAA
 GTTACAGAGTGCCTATGAGAGTGGCCTGATGCCTTACACGAATTACACATTTGATTTCAAGGGTATAATA
 GACTACATTTTCTATTCTAAACCTCAGCTGAACACCTTAGGCATCCTGGGCCCTCTGGACCACCACTGGC
 TGGTTGAGAATAACATCAGTGGCTGCCCGACCCCTCATCCCTCTGACCATTCTCACTTTTTGCACA
 ACTGGAGCTCTTACTGCCTTCTGCCCAAGTCAACGGCATCCACCTTCTGGCAGGAGG

ACGCGTACGCGGCCGCTCGAGCAGAAACTCATCTCAGAAGAGGATCTGGCAGCAAATGATATCCTGGATT
 ACAAGGATGACGACGATAAGGTTTAA

Protein Sequence:

>RC219771 representing NM_015455
 Red=Cloning site Green=Tags(s)

MPKEKYEPDPRRMYTIMSSEEAANGKKSHWAELEISGKVRSLASLWLSLTHLTHLSDNSL SRIPSDI
 AKLHNLVYLDLSSNKIRSLPAELGNMVSRELHLNNLLRVLPFELGKLFQLQTLGLKGNPLTQDILNLY
 QEPDGTRRLNLYLLDNLSGTAKRITTEQPPRSWIMLQEPDRTRPTALFSVMCYNVLC DKYATRQLYGYC
 PSWALNWDYRKKAI IQEILSCNADIVSLQEVETEYYSFFLVELKERGYNGFFSPKSRARMSEQERKHV
 DGCAIFFKTEKFTLVQKHTVEFNQLAMANSEGSEAMLNRVMTKDNIGVAVLLELRKESIEMPSGKPHLGT
 EKQLILVANAHMHWDPESDVKLVQTMFLSEVKNIIDKASRNKSSVLGEFGTIPLVLCADLNSLPDSG
 VVEYLSTGGVETNHKDFKELRYNESL TNF SCHGKNGTTNGRITHGFKLQSAYESGLMPYNTYTFDFKGI
 DYIFYSKPQLNLTGLGPLDHHWLVENNISGCPHPLIPSDHFLFAQLELLLLPFLPQVNGIHLPGRR

TRTRPLEQKLI SEEDLAANDILDYKDDDDKV

Chromatograms:

https://cdn.origene.com/chromatograms/mk8018_g10.zip

Restriction Sites:

SgfI-MluI

Cloning Scheme:


ACCN: NM_015455

ORF Size: 1671 bp

OTI Disclaimer: The molecular sequence of this clone aligns with the gene accession number as a point of reference only. However, individual transcript sequences of the same gene can differ through naturally occurring variations (e.g. polymorphisms), each with its own valid existence. This clone is substantially in agreement with the reference, but a complete review of all prevailing variants is recommended prior to use. [More info](#)

OTI Annotation: This clone was engineered to express the complete ORF with an expression tag. Expression varies depending on the nature of the gene.

Components: The ORF clone is ion-exchange column purified and shipped in a 2D barcoded Matrix tube containing 10ug of transfection-ready, dried plasmid DNA (reconstitute with 100 ul of water).

- Reconstitution Method:**
1. Centrifuge at 5,000xg for 5min.
 2. Carefully open the tube and add 100ul of sterile water to dissolve the DNA.
 3. Close the tube and incubate for 10 minutes at room temperature.
 4. Briefly vortex the tube and then do a quick spin (less than 5000xg) to concentrate the liquid at the bottom.
 5. Store the suspended plasmid at -20°C. The DNA is stable for at least one year from date of shipping when stored at -20°C.

RefSeq: [NM_015455.3](#), [NP_056270.2](#)

RefSeq Size: 6178 bp

RefSeq ORF: 1674 bp

Locus ID: 57472

Cytogenetics: 5q35.3

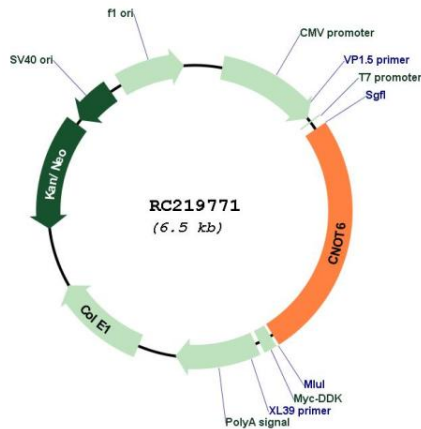
Protein Families: Transcription Factors

Protein Pathways: RNA degradation

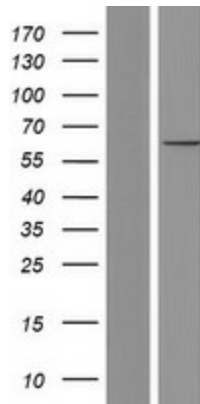
MW: 63.1 kDa

Gene Summary: This gene encodes the catalytic component of the CCR4-NOT core transcriptional regulation complex. The encoded protein has a 3'-5' RNase activity and prefers polyadenylated substrates. The CCR4-NOT complex plays a role in many cellular processes, including miRNA-mediated repression, mRNA degradation, and transcriptional regulation. [provided by RefSeq, Dec 2014]

Product images:



Circular map for RC219771



Western blot validation of overexpression lysate (Cat# [LY414536]) using anti-DDK antibody (Cat# [TA50011-100]). Left: Cell lysates from untransfected HEK293T cells; Right: Cell lysates from HEK293T cells transfected with RC219771 using transfection reagent MegaTran 2.0 (Cat# [TT210002]).