

Product datasheet for **RC219766**

CNO6L (CNOT6L) (NM_144571) Human Tagged ORF Clone

Product data:

Product Type:	Expression Plasmids
Product Name:	CNO6L (CNOT6L) (NM_144571) Human Tagged ORF Clone
Tag:	Myc-DDK
Symbol:	CNO6L
Synonyms:	CCR4b
Mammalian Cell Selection:	Neomycin
Vector:	pCMV6-Entry (PS100001)
E. coli Selection:	Kanamycin (25 ug/mL)



[View online »](#)

ORF Nucleotide Sequence:

>RC219766 representing NM_144571
 Red=Cloning site Blue=ORF Green=Tags(s)

TTTTGTAATACGACTCACTATAGGGCGGCCGGAATTCGTCGACTGGATCCGGTACCGAGGAGATCTGCC
 GCC**CGGATCGCC**

ATGAGACTAATAGGGATGCCAAAGGAAAAATATGATCCTCCAGATCCTCGCAGAATTTATACCATCATGT
 CAGCAGAGGAGGTAGCCAATGGGAAAAATCTCACTGGGCAGAATTAGAAATCTCGGTAGAGTGGGAG
 CCTAAGTACATCACTTTGGTCATTGACACACTTGACAGCGCTGCACCTAAATGACAATTACCTTAGTCGC
 ATTCCACCTGATATTGCCAAGCTTCATAATCTGGTTTACCTGGATCTGTCACTAACTCAGAAGTT
 TACCAGCAGAAGTAAAGCATGGTGTCTCTCAGGGAATTGCTTTTAAATAACAATCTGTTACGGGTTTT
 GCCTTATGAACCTGGTCGGCTCTCCAGCTACAACTCTAGGTTTGAAGGCAATCCTTTATCACAGGAT
 ATTCTCAACTTATACCAGGACCCAGATGGAACCCGAAAGCTACTGAACCTCATGCTTGACAATCTCGCAG
 TTCATCCAGAGCAGCTTCTCCGAGGCCATGGATTACATTAAGAAGACGAGACCAATCTGCCGTCAGC
 ATCATTACGGTTATGTGTTACAATGTGTTATGTGATAAATACGCTACCCGGCAGCTATATGGCTATTGC
 CCATCCTGGGCATTAAACTGGGAATACAGGAAAAAGGGAATTATGGAAGAAATTGTTAACTGTGACGCAG
 ATATCATTAGTCTTCAGGAAGTGAAACAGAGCAATACTCACTCTCTTTCTGCCAGCATTGAAGGAGCG
 TGGATATGATGGATTTTTTCTCCAAAGTCACGTGCCAAAATCATGTCTGAGCAGGAGAGAAAGCATGTA
 GATGGTTGTGCAATTTCTTCAAACAGAAAAATTTACATTGGTGCAGAAGCATAACAGTGGAAATTAACC
 AAGTGGCGATGGCTAATTCAGATGGATCCGAAGCTATGCTGAACAGAGTGATGACAAAAGATAACATTGG
 TGTCGCTGTGGTATTAGAGGTCCACAAAGAACTATTTGGAGCAGGTATGAAGCCTATTATGCTGCAGAC
 AAACAGCTGCTTATAGTGGCAAATGCCACATGCATTGGGACCCAGAGTATTCTGATGTGAAGCTCATCC
 AGACCATGATGTTTGTCTCAGAGGTTAAAAACATTTGGAGAAAGCCTCTAGTAGGCCTGGAAGCCCAAC
 TGCAGATCCTAATTCATCCCGCTGGTGTCTATGTGCAGATCTTAACTCATTGCCAGATTCAGGTGTTGTG
 GAATACTTAAGCAATGGAGGAGTAGCTGACAACCATAAAGACTTCAAGGAACTAAGGTACAATGAGTGTC
 TTATGAACCTCAGCTGCAATGGAAAGAATGGAAGCTCAGAAGGGAGAATCACACATGGCTTCCAACCTAA
 GAGCGCTATGAAAATAACTTGATGCCTTACCCAATTACACCTTTGATTTCAAAGGCGTGATTGACTAC
 ATTTTCTATTCCAAGACTCATATGAACGTGCTTGGTGTCTGGGGCTTTAGATCCTCAATGGCTGGTTG
 AGAACACATCACTGGGTGTCCACACCCTCACATCCCTCAGACCACTTCTCACTGTTAACACAACCTGA
 ACTCCACCCTCACTCTGCCTCTGTCAATGGTGTTCACCTGCCTAATCGGAGG

ACGCGTACGCGGCCGCTCGAGCAGAAACTCATCTCAGAAGAGGATCTGGCAGCAAATGATATCCTGGATT
 ACAAGGATGACGACGATAAGGTTTAA

Protein Sequence:

>RC219766 representing NM_144571
 Red=Cloning site Green=Tags(s)

MRLIGMPKEYDPPDPRIYTIMSAEEVANGKSHWAELEISGRVRSLSLWLSLTHLTALHLNDNLSR
 IPPDIAKLNHLVYLDLSSNKLRSPLPAELGNMVSLRELLNLLNRVLPYELGRLFQLQTLGLKGNPLSQD
 ILNLYQDPDGRKLLNFMLDNLAVHPEQLPPRPWITLKERDQILPSASFVVMCYNVLC DYATRQLYGYC
 PSWALNWEYRKKGIMEEIVNCDADIISLQEVETEYFTLFLPALKERGYDGFSPKSRKIMSEQERKHV
 DGCAIFFKTEKFTLVQKHTVEFNQVAMANS DGSEAMLNRVMTKDNI GVAVVLEVHKELFGAGMKPIHAAD
 KQLLIVANAHMHWDP EYSDVKLIQTMMFVSEVKNILEKASSRPGSPTADPN SIPLVLCADLNSLPDSGVV
 EYLSNGGVADNHKDFKELRYNECLMNFSCNGKNGSSEGRITHGFQLKSAYENNLMPYTYTFDFKGVIDY
 IFYSKTHMNVLGVLGPLDPQWLVENNITGCPHPHIPSDFHSLLTQLELHPPLPLVNGVHLPNRR

TRTRPLEQKLISEEDLAANDILDYKDDDDKV

Chromatograms:

https://cdn.origene.com/chromatograms/mk8019_a01.zip

Restriction Sites:

Sgfl-MluI

Cloning Scheme:

ACCN: NM_144571

ORF Size: 1665 bp

OTI Disclaimer: The molecular sequence of this clone aligns with the gene accession number as a point of reference only. However, individual transcript sequences of the same gene can differ through naturally occurring variations (e.g. polymorphisms), each with its own valid existence. This clone is substantially in agreement with the reference, but a complete review of all prevailing variants is recommended prior to use. [More info](#)
OTI Annotation: This clone was engineered to express the complete ORF with an expression tag. Expression varies depending on the nature of the gene.

Components: The ORF clone is ion-exchange column purified and shipped in a 2D barcoded Matrix tube containing 10ug of transfection-ready, dried plasmid DNA (reconstitute with 100 ul of water).

Reconstitution Method:

1. Centrifuge at 5,000xg for 5min.
2. Carefully open the tube and add 100ul of sterile water to dissolve the DNA.
3. Close the tube and incubate for 10 minutes at room temperature.
4. Briefly vortex the tube and then do a quick spin (less than 5000xg) to concentrate the liquid at the bottom.
5. Store the suspended plasmid at -20°C. The DNA is stable for at least one year from date of shipping when stored at -20°C.

RefSeq: [NM_144571.3](#)
RefSeq Size: 8794 bp

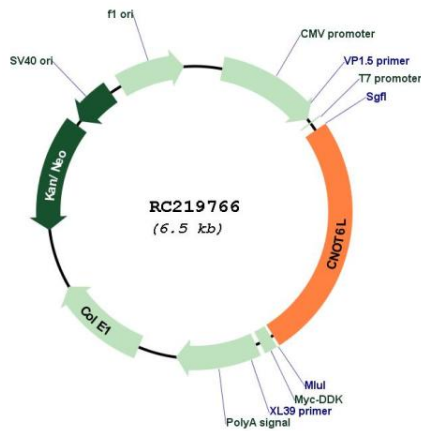
RefSeq ORF: 1668 bp

Locus ID: 246175

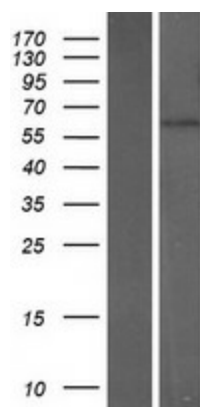
UniProt ID: [Q96L15](#)

Cytogenetics:	4q21.1
Domains:	LRR, LRR_TYP, Exo_endo_phos, LRR_PS
Protein Pathways:	RNA degradation
MW:	62.8 kDa
Gene Summary:	Has 3'-5' poly(A) exoribonuclease activity for synthetic poly(A) RNA substrate. Catalytic component of the CCR4-NOT complex which is one of the major cellular mRNA deadenylases and is linked to various cellular processes including bulk mRNA degradation, miRNA-mediated repression, translational repression during translational initiation and general transcription regulation. Additional complex functions may be a consequence of its influence on mRNA expression. May be involved in the deadenylation-dependent degradation of mRNAs through the 3' UTR AU-rich element-mediated mechanism. Involved in deadenylation-dependent degradation of CDKN1B mRNA. Its mRNA deadenylase activity can be inhibited by TOB1. Mediates cell proliferation and cell survival and prevents cellular senescence. [UniProtKB/Swiss-Prot Function]

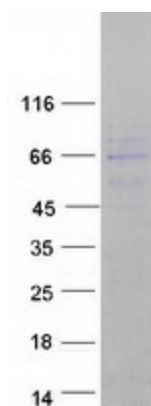
Product images:



Circular map for RC219766



Western blot validation of overexpression lysate (Cat# [LY408280]) using anti-DDK antibody (Cat# [TA50011-100]). Left: Cell lysates from untransfected HEK293T cells; Right: Cell lysates from HEK293T cells transfected with RC219766 using transfection reagent MegaTran 2.0 (Cat# [TT210002]).



Coomassie blue staining of purified CNOT6L protein (Cat# [TP319766]). The protein was produced from HEK293T cells transfected with CNOT6L cDNA clone (Cat# RC219766) using MegaTran 2.0 (Cat# [TT210002]).