

Product datasheet for **RC219765**

LGR8 (RXFP2) (NM_130806) Human Tagged ORF Clone

Product data:

Product Type:	Expression Plasmids
Product Name:	LGR8 (RXFP2) (NM_130806) Human Tagged ORF Clone
Tag:	Myc-DDK
Symbol:	LGR8
Synonyms:	GPR106; GREAT; INSL3R; LGR8; LGR8.1; RXFPR2
Mammalian Cell Selection:	Neomycin
Vector:	pCMV6-Entry (PS100001)
E. coli Selection:	Kanamycin (25 ug/mL)



[View online »](#)

ORF Nucleotide Sequence:

>RC219765 representing NM_130806
 Red=Cloning site Blue=ORF Green=Tags(s)

TTTTGTAATACGACTCACTATAGGGCGGCCGGAATTCGTCGACTGGATCCGGTACCGAGGAGATCTGCC
 GCC**CGGATCGCC**

ATGATTGTTTTCTGGTTTTAAACATCTCTTCAGCCTCAGATTGATTACAATGTTCTTTCTACTTCATT
 TCATCGTTCTGATCAATGTCAAAGATTTTGCACCTGACTCAAGGTAGCATGATCACTCCTTCATGCCAAAA
 AGGATATTTTTCTGTGGGAATCTTACCAAGTGCTTACCCCGAGCTTTTCACTGTGATGGCAAGGATGAC
 TGTGGGAACGGGGCGGACGAAGAGAAGTGGTGACTAGTGGATGGGCGACCATTTTGGCACAGTGC
 ATGGAAATGCTAACAGCGTGGCCTAACACAGGAGTGCTTTCTAAAACAGTATCCACAATGCTGTGACTG
 CAAAGAACTGAATTGGAATGTGTAATGGTGACTTAAAGTCTGTGCCGATGATTTCTAACAAATGTGACA
 TTAAGTCTCTTCAGAAAAACAAATCCACAGTCTTCCAGATAAAGTTTTCATCAAATACACAAAACCTTA
 AAAAGATATTTCTCAGCATAATTGCATTAGACACATATCCAGGAAAGCATTTTTGGATTATGTAATCT
 GCAAAATATTATCTCAACCACAACCTGCATCACAACCCTCAGACCTGGAATATTCAAAGACTTACATCAG
 CTAAGTGGCTAATTCTAGATGACAATCCAATAACCAGAAATTCACAGCGCTTGTTCACGGGATTAATT
 CCTGTTTTCTGTCTATGGTTAATAACTACTTAGAAGCTCTTCCCAAGCAGATGTGTGCCAAATGCC
 TCAACTCAACTGGGTGGATTTGGAAGGCAATAGAATAAAGTATCTCACAAATCTACGTTTCTGTGCTGC
 GATTTCGCTCACAGTGTGTTTCTGCCTAGAAATCAAATGGTTTTGTTCCAGAGAAGACATTTTCTTCAT
 TAAAAATTTAGGAGAAGTGGATCTGTCTAGCAATACGATAACGGAGCTATCACCTCACCTTTTTAAAGA
 CTTGAAGCTTCTACAAAAGCTGAACCTGTATCCAATCCTCTTATGTATCTTACAAGAACCAGTTTGAA
 AGTCTTAAACAACCTCAGTCTCTAGACCTGGAAGGATAGAGATCCAAATATAAACACACGAATGTTTC
 AACCCATGAAGAATCTTCTCACATTTATTTCAAAAACCTTCGATACTGCTCCTATGCTCCCATGTCCG
 AATATGTATGCCCTTGACGGACGGCATTCTTCCATTTGAGGACCTCTGGCTAACAAATATCCTCAGAATA
 TTTGTCTGGGTTATAGCTTTTATTACCTGCTTTGAAATCTTTTTGTGATTGGCATGAGATCTTTTATTA
 AAGCTGAAAAACAACCTCACGCTATGTCCATCAAATCCTTTGTTGTGCTGATTGCCTGATGGGTGTTTA
 CTTGTTCTTTGTTGGCATTTCGATATAAAAATACCGAGGGCAGTATCAGAAGTATGCCTTGTGTTGGATG
 GAGAGCGTGCAGTGCCGCTCATGGGTTCTGGCCATGCTGTCCACCGAAGTCTCTGTTCTGCTACTGA
 CCTACTTGACTTTGGAGAAGTCTCTGGTCAATGCTTCCCTTCAGTAACATTGACCTGGAAAACGGCA
 GACCTCAGTCATCCTCATTGTCATCTGGATGGCGGGATTTTAAAGCTGTAATCCATTTTGAATAAG
 GATTATTTTGGAACTTTTATGGGAAAAATGGAGTATGTTTCCCACTTTATTATGACCAACAGAAGATA
 TTGGAAGCAAAGGTATTCTCTTGGAAATTTCTAGGTGTGAACTTGCTGGCTTTTCTCATCATTGTGTT
 TTCTATATTACTATGTTCTGTTCCATTCAAAAACCGCCTTGCAGACCACAGAAGTAAGGAATGTTTT
 GGAAGAGAGGTGGCTGTTGCAAATCGTTTCTTTTTTATAGTGTCTCTGATGCCATCTGCTGGATTCCTG
 TATTTGTAGTTAAAAATCCTTTCCCTCTTCCGGTGGAAAATACCAGACACAATGACTTCTGGATAGTGAT
 TTTTTCTTCCAGTTAACAGTGCTTTGAATCCAATCCTCTATACTCTCACAAACCACTTTTTAAGGAC
 AAGTTGAAACAGCTGCTGCACAAACATCAGAGGAAATCAATTTTCAAAATTAACAAAAAAGTTTATCTA
 CATCCATTGTGTGATAGAGGACTCCTCTTCCCTGAAACTTGGGTTTTGAACAAAATAACACTTGGAGA
 CAGTATAATGAAACCAGTTTCC

ACGCGTACGCGGCCGCTCGAGCAGAAACTCATCTCAGAAGAGGATCTGGCAGCAAATGATATCCTGGATT
 ACAAGGATGACGACGATAAGGTTTAA

Protein Sequence: >RC219765 representing NM_130806
 Red=Cloning site Green=Tags(s)

MIVFLVFKHLFSLRLITMFFLLHFIVLINVKDFALTQGSMITPSCQKGYFSCGNLTKCLPRAFHC DGKDD
 CGNGADEENC GDTSGWATIFGTVHGNANSVALTQECFLKQYPQCDCKETELCEVNGDLKSVPMISNNVT
 LLSLQKNKIHSLPDKVFIKYTKLKKIFLQHN CIRHISRKAFFGLCNLQILYLNHNCITTLRPGIFKDLHQ
 LTWLILDDNPITRISQRLFTGLNSLFFLSMVNNYLEALPKQMCAMPQLNWVDLEGNRIKYL TNSTFLSC
 DSLTVLFLPRNQIGFVPEKTFSSLKNLGELDLSSNTITELSPHLFKDLKLLQKLNLSNPLMYLHKNQFE
 SLKQLQSLDLERIEIPNINTRMFQPMKNLSHIYFKNFRYCSYAPHVRCMPLTDGISSFEDLLANNILRI
 FVWVIAFITCFGNLFVIGMRSFIKAENTHAMSILCCADCLMGVYVFFVGFIDIKYRQYQKYALLWM
 ESVQCRLMGFLAMLSTEVSLLLLTYLLEKFLVIVFPFSNIRPGKRQTSVILICIW MAGFLIAVIPFWNK
 DYFGNFYKNGVCFPLYDQTEDIGSKGYSLGIFLGVNLLAFLIIVFSYITMFC SIQKTAQTTEVRNCF
 GREVAVANRFFFIVSDAICWIPV FVVKILSLFRVEIPDTMTSWIVIFFLPVNSALNPILYTLTTNFFKD
 KLKQLLHKHQKRSIFKIKKKSLSTSIVWIEDSSSLKLGVLNKITLGD SIMKPV S

TRTRPLEQKLI SEEDLAANDILDYKDDDDKV

Chromatograms: https://cdn.origene.com/chromatograms/mk6285_c04.zip

Restriction Sites: SgfI-MluI

Cloning Scheme:

Cloning sites used for ORF Shuttling:



* The last codon before the Stop codon of the ORF

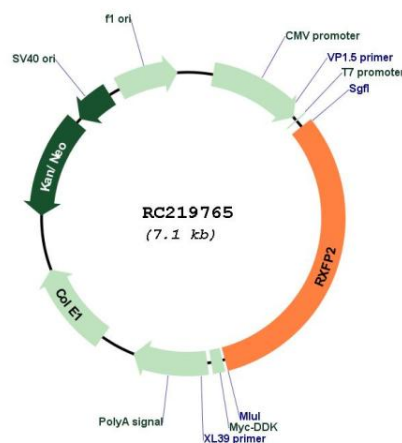
ACCN: NM_130806

ORF Size: 2262 bp

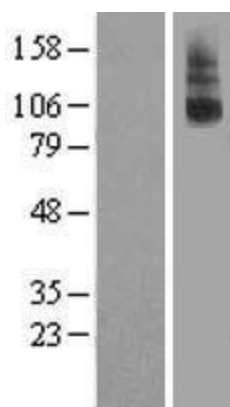
OTI Disclaimer: The molecular sequence of this clone aligns with the gene accession number as a point of reference only. However, individual transcript sequences of the same gene can differ through naturally occurring variations (e.g. polymorphisms), each with its own valid existence. This clone is substantially in agreement with the reference, but a complete review of all prevailing variants is recommended prior to use. [More info](#)

OTI Annotation: This clone was engineered to express the complete ORF with an expression tag. Expression varies depending on the nature of the gene.

Components:	The ORF clone is ion-exchange column purified and shipped in a 2D barcoded Matrix tube containing 10ug of transfection-ready, dried plasmid DNA (reconstitute with 100 ul of water).
Reconstitution Method:	<ol style="list-style-type: none"> 1. Centrifuge at 5,000xg for 5min. 2. Carefully open the tube and add 100ul of sterile water to dissolve the DNA. 3. Close the tube and incubate for 10 minutes at room temperature. 4. Briefly vortex the tube and then do a quick spin (less than 5000xg) to concentrate the liquid at the bottom. 5. Store the suspended plasmid at -20°C. The DNA is stable for at least one year from date of shipping when stored at -20°C.
RefSeq:	<u>NM_130806.5</u>
RefSeq Size:	2838 bp
RefSeq ORF:	2265 bp
Locus ID:	122042
UniProt ID:	<u>Q8WXD0</u>
Cytogenetics:	13q13.1
Protein Families:	Druggable Genome, Transmembrane
Protein Pathways:	Neuroactive ligand-receptor interaction
MW:	86.3 kDa
Gene Summary:	This gene encodes a member of the GPCR (G protein-coupled, 7-transmembrane receptor) family. Mutations in this gene are associated with cryptorchidism. Alternatively spliced transcript variants encoding different isoforms have been found for this gene.[provided by RefSeq, Oct 2009]

Product images:


Circular map for RC219765



Western blot validation of overexpression lysate (Cat# [LY408958]) using anti-DDK antibody (Cat# [TA50011-100]). Left: Cell lysates from untransfected HEK293T cells; Right: Cell lysates from HEK293T cells transfected with RC219765 using transfection reagent MegaTran 2.0 (Cat# [TT210002]).