

## Product datasheet for **RC219760L4V**

### Claudin18 (CLDN18) (NM\_001002026) Human Tagged ORF Clone Lentiviral Particle

#### Product data:

Product Type:	Lentiviral Particles
Product Name:	Claudin18 (CLDN18) (NM_001002026) Human Tagged ORF Clone Lentiviral Particle
Symbol:	Claudin18
Synonyms:	SFTA5; SFTPJ
Mammalian Cell Selection:	Puromycin
Vector:	pLenti-C-mGFP-P2A-Puro (PS100093)
Tag:	mGFP
ACCN:	NM_001002026
ORF Size:	783 bp
ORF Nucleotide Sequence:	The ORF insert of this clone is exactly the same as(RC219760).
OTI Disclaimer:	The molecular sequence of this clone aligns with the gene accession number as a point of reference only. However, individual transcript sequences of the same gene can differ through naturally occurring variations (e.g. polymorphisms), each with its own valid existence. This clone is substantially in agreement with the reference, but a complete review of all prevailing variants is recommended prior to use. <a href="#">More info</a>
OTI Annotation:	This clone was engineered to express the complete ORF with an expression tag. Expression varies depending on the nature of the gene.
RefSeq:	<a href="#">NM_001002026.2</a>
RefSeq Size:	3350 bp
RefSeq ORF:	786 bp
Locus ID:	51208
UniProt ID:	<a href="#">P56856</a>
Cytogenetics:	3q22.3
Protein Families:	Transmembrane
Protein Pathways:	Cell adhesion molecules (CAMs), Leukocyte transendothelial migration, Tight junction

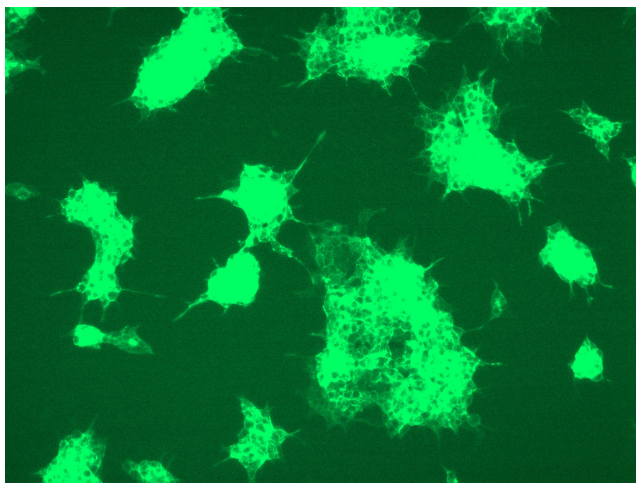


[View online »](#)

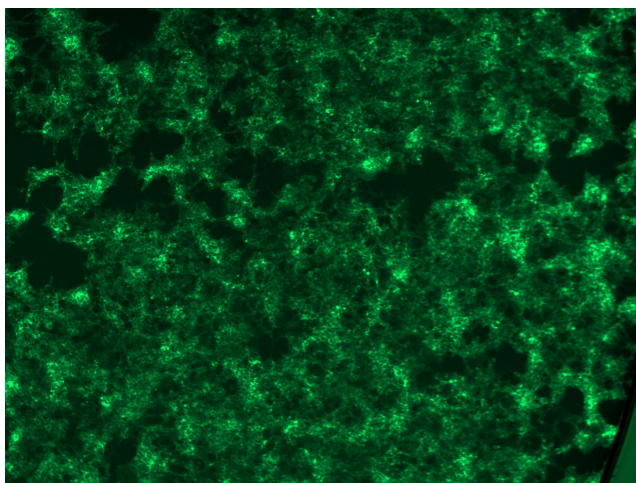
MW: 27.5 kDa

**Gene Summary:** This gene encodes a member of the claudin family. Claudins are integral membrane proteins and components of tight junction strands. Tight junction strands serve as a physical barrier to prevent solutes and water from passing freely through the paracellular space between epithelial or endothelial cell sheets, and also play critical roles in maintaining cell polarity and signal transductions. This gene is upregulated in patients with ulcerative colitis and highly overexpressed in infiltrating ductal adenocarcinomas. PKC/MAPK/AP-1 (protein kinase C/mitogen-activated protein kinase/activator protein-1) dependent pathway regulates the expression of this gene in gastric cells. Alternatively spliced transcript variants encoding different isoforms have been identified. [provided by RefSeq, Jun 2010]

### Product images:



[RC219760L4] was used to prepare Lentiviral particles using [TR30037] packaging kit. HEK293T cells were transduced with RC219760L4V particle to overexpress human CLDN18-mGFP fusion protein.



[RC219760L4] was used to prepare Lentiviral particles using [TR30037] packaging kit. HEK293T cells were transduced with RC219760L4V particle to overexpress human CLDN18-mGFP fusion protein.