

Product datasheet for **RC219755**

ELK4 (NM_001973) Human Tagged ORF Clone

Product data:

Product Type:	Expression Plasmids
Product Name:	ELK4 (NM_001973) Human Tagged ORF Clone
Tag:	Myc-DDK
Symbol:	ELK4
Synonyms:	SAP1
Mammalian Cell Selection:	Neomycin
Vector:	pCMV6-Entry (PS100001)
E. coli Selection:	Kanamycin (25 ug/mL)



[View online »](#)

ORF Nucleotide
Sequence:

>RC219755 representing NM_001973
Red=Cloning site Blue=ORF Green=Tags(s)

TTTTGTAATACGACTCACTATAGGGCGGCCGGAATTCGTCGACTGGATCCGGTACCGAGGAGATCTGCC
GCCGCGATCGCC

ATGGACAGTGCTATCACCTGTGGCAGTTCCTTCTTCAGCTCCTGCAGAAGCCTCAGAACAAGCACATGA
TCTGTTGGACCTAATGATGGGCAGTTTAAGCTTTTGCAGGCAGAAGAGGTGGCTCGTCTCTGGGGGAT
TCGCAAGAACAAGCCTAACATGAATTATGACAACTCAGCCGAGCCCTCAGATACTATTATGTTAAAGAAT
ATCATCAAAAAAGTGAATGGTCAGAAGTTTGTGTACAAGTTTGTCTTTATCCAGAGATTTGAACATGG
ATCCAATGACAGTGGCAGGATTGAGGGTACTGTGAAAGTTTAACTTCAGTGAAGTCAGCAGCAGTTC
CAAAGATGTGGAGAATGGAGGAAAGATAAACCACCTCAGCCTGGTGCCAAGACCTCTAGCCGCAATGAC
TACATACACTCTGGCTTATATTCTTCACTTACTCTCAACTCTTTGAACTCCTCAATGTTAAAGCTTTTCA
AATTGATAAAGACTGAGAATCCAGCCGAGAAACTGGCAGAGAAAAATCTCCTCAGGAGCCACACCATC
TGTCATCAAAATTTGTCAGCACACCTTCCAAAAAGCCACCAGTTGAACCTGTTGCTGCCACCATTTCAATT
GGCCCAAGTATTTCTCCATCTTCAGAAGAACTATCCAAGCTTTGGAGACATTGGTTTCCCAAAACTGC
CTTCCCTGGAAGCCCAACCTCTGCCTCTAACGTAATGACTGCTTTTGCCACCACACCACCATTTTCGTC
CATACCCCTTTGCGAGAACCTCCAGAACACCTTACCACCACCTGAGTTCTACCCAGACATCGACACA
GACATTGATTGAGTGGCTTCTCAGCCAATGGAACCTCCAGAGAATTTGTCAGTGGAGCCTAAAGACCAGG
ATTCAGTCTTGCTAGAAAAGGACAAAGTAAATAATTCAATCAAGATCCAAGAAACCCAAAGGGTTAGAACT
GGCACCACCCCTTGATGATCAGGACAGTATCCAAGCCACTGGGAATCTGAGCCCATCTCTCCCTACA
GCTTCTTACACCAGCATTTTTTTCACAGACACCCATCATACTGACTCCAAGCCCTTGCTCTCCAGTA
TCCACTTCTGGAGTACTCTCAGTCTGTTGCTCCCTAAGTCCAGCCAGACTGCAAGGTGCTAACACACT
TTTCCAGTTTCTTCTGTACTGAACAGTATGGGCCATTCCTCTGTCTGGGCTGGATGGACCTTCCACC
CCTGGCCCATTTTCCCGAGCCTACAGAAGACA

ACGCGTACGCGGCCGCTCGAGCAGAACTCATCTCAGAAGAGGATCTGGCAGCAATGATATCCTGGATT
ACAAGGATGACGACGATAAGGTTTAA

Protein Sequence:

>RC219755 representing NM_001973
Red=Cloning site Green=Tags(s)

MDSAITLWQFLLQLLQKPQNKHMICWTSNDGQFKLLQAEVVARLWGIRKNKPNMNYDKLSRALRYYYVKN
I IKKVNGQKFVYK FVSYPEILNMDPMTVGRIEGDCESLNFSEVSSSKDVENGKDKPPQPGAKTSSRND
YIHSGLYSSFTLNSLNSSNVKLFKLIK TENPAEKLA EKKSPQEP TSVIKFVTT PPKPPVEPVAATISI
GPSISPSSEETIQALETLVSPKLP SLEAPTSASNVM TAFATPP I SSIPPLQEP RPTSPPLSSH PDIDT
DIDSVASQPMELPENLSLEPKDQD SVLLEKDKV NNSRSKPKGLELAPTLVITSSDP SPLGILSPSLPT
ASLTPAFFSQTP IILTPSPLLSSIHFWSTLSPVAPL SPARLQGANTLFQFP SVLNSHGPF TSLGLDGPST
PGPFSPDLQKT

TRTRPLEQKLISEEDLAANDILDYKDDDDKV

Chromatograms:

https://cdn.origene.com/chromatograms/mk6272_b06.zip

Restriction Sites:

Sgfl-Mlul

Cloning Scheme:


ACCN: NM_001973

ORF Size: 1293 bp

OTI Disclaimer: The molecular sequence of this clone aligns with the gene accession number as a point of reference only. However, individual transcript sequences of the same gene can differ through naturally occurring variations (e.g. polymorphisms), each with its own valid existence. This clone is substantially in agreement with the reference, but a complete review of all prevailing variants is recommended prior to use. [More info](#)

OTI Annotation: This clone was engineered to express the complete ORF with an expression tag. Expression varies depending on the nature of the gene.

Components: The ORF clone is ion-exchange column purified and shipped in a 2D barcoded Matrix tube containing 10ug of transfection-ready, dried plasmid DNA (reconstitute with 100 ul of water).

Reconstitution Method:

1. Centrifuge at 5,000xg for 5min.
2. Carefully open the tube and add 100ul of sterile water to dissolve the DNA.
3. Close the tube and incubate for 10 minutes at room temperature.
4. Briefly vortex the tube and then do a quick spin (less than 5000xg) to concentrate the liquid at the bottom.
5. Store the suspended plasmid at -20°C. The DNA is stable for at least one year from date of shipping when stored at -20°C.

RefSeq: [NM_001973.4](#)

RefSeq Size: 3034 bp

RefSeq ORF: 1296 bp

Locus ID: 2005

UniProt ID: [P28324](#)

Cytogenetics: 1q32.1

Domains: ETS

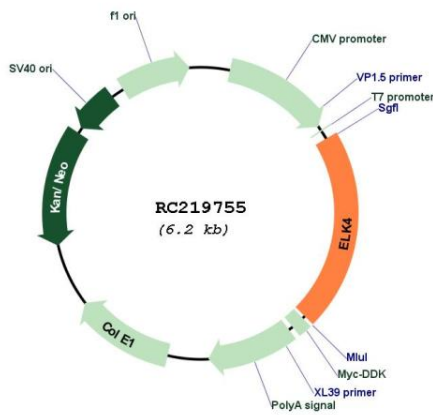
Protein Families: Druggable Genome, Transcription Factors

Protein Pathways: MAPK signaling pathway

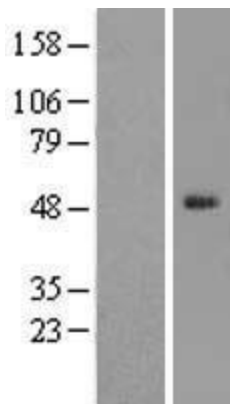
MW: 46.7 kDa

Gene Summary: This gene is a member of the Ets family of transcription factors and of the ternary complex factor (TCF) subfamily. Proteins of the TCF subfamily form a ternary complex by binding to the the serum response factor and the serum reponse element in the promoter of the c-fos proto-oncogene. The protein encoded by this gene is phosphorylated by the kinases, MAPK1 and MAPK8. Several transcript variants have been described for this gene. [provided by RefSeq, Jul 2008]

Product images:



Circular map for RC219755



Western blot validation of overexpression lysate (Cat# [LY419619]) using anti-DDK antibody (Cat# [TA50011-100]). Left: Cell lysates from untransfected HEK293T cells; Right: Cell lysates from HEK293T cells transfected with RC219755 using transfection reagent MegaTran 2.0 (Cat# [TT210002]).